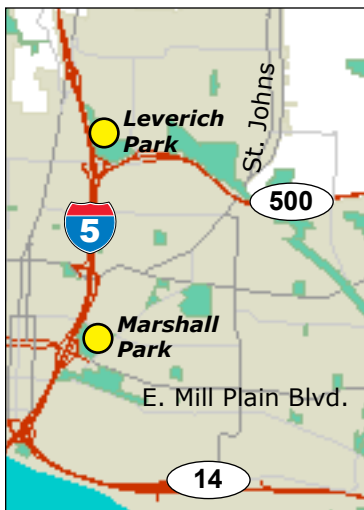


**HOST YOUR NEXT EVENT AT ONE OF THESE BEAUTIFUL PARKS.**

**Capt. William Clark Regional Park at Cottonwood Beach**

*S. Index St. at S. 32nd St. in Washougal*

- Two medium shelters (50 person capacity each)
- Next to the Columbia River and Steigerwald Wildlife Refuge
- Features restrooms, water access from a sandy beach and a multi-use trail



**Leverich Community Park**

*Leverich Park Way at 39th St. in Vancouver*

- One large shelter (100 person capacity)
- Next to the Burnt Bridge Creek Greenway
- Features BBQs, restrooms, ball field, playground, multi-use trails and a 12-hole disc golf course

**Marshall Community Park**

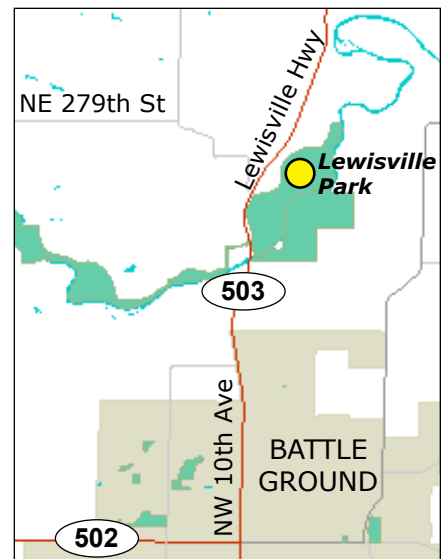
*1015 E. McLoughlin Blvd. in Vancouver*

- One medium shelter (52 person capacity)
- Next to the Marshall Community Center Pool and Luepke Senior Center
- Features restrooms, ball fields, large playground, Nature Play area, horseshoe pits and a loop walking trail

**Lewisville Regional Park**

*26411 NE Lewisville Hwy. in Battle Ground*

- 13 shelters (various sizes, 20-200 person capacity)
- Next to the East Fork Lewis River
- Features BBQs, restrooms, ball fields, sport court, swimming areas, boat launch, playgrounds and multi-use trails



**PICNIC SHELTER RESERVATION FEES**

Fees of \$25-\$100 per day are charged for reservations, depending on the size of the picnic shelter. The fees help pay for maintenance and operations. If a picnic shelter has not already been reserved, it is available at no charge on a first-come, first-served basis. For more information, please visit this Web page: [www.cityofvancouver.us/parks-recreation/parks\\_trails/reservations.asp](http://www.cityofvancouver.us/parks-recreation/parks_trails/reservations.asp).

## Salmon Creek Park/Klineline Pond

1112 NE 117th St., Vancouver, WA

- Two medium shelters (50 person capacity)
- Next to Klineline Pond and the Salmon Creek Greenway Trail
- Features playground, restrooms, open lawn, multi-use trails, swimming and fishing

## Frenchman's Bar Regional Park

9612 NW Lower River Rd., Vancouver, WA

- One large shelter (100 person capacity)
- One small shelter (50 person capacity)
- Next to the Columbia River and within walking distance of Vancouver Lake
- Features BBQs, restrooms, picnic tables, sand volleyball courts, multi-use trails and playground equipment

## Vancouver Lake Regional Park

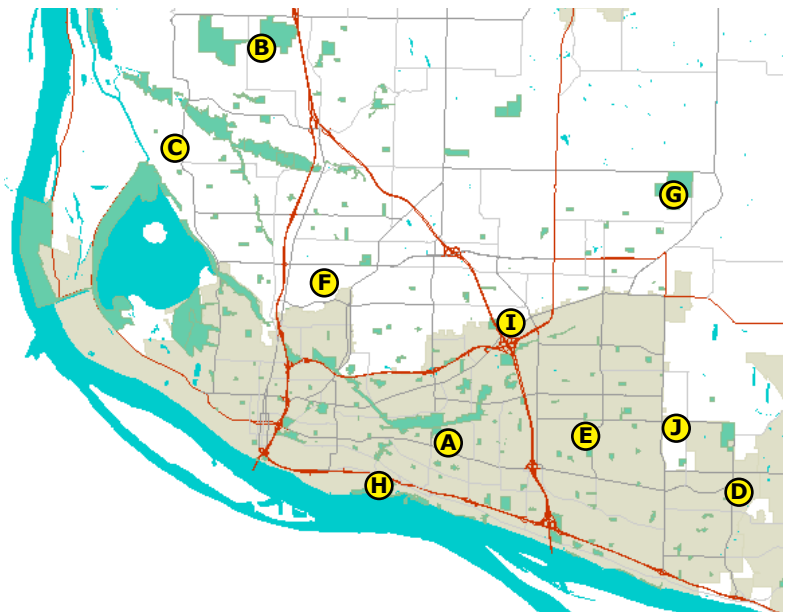
6801 NW Lower River Rd., Vancouver, WA

- Two large shelters (72-216 person capacity each)
- Next to Vancouver Lake and within walking distance of the Columbia River
- Features BBQs, restrooms, playground, open lawn areas, multi-use trails, swimming and boat access



**PICNIC SHELTERS AT THE FOLLOWING PARKS ARE ALWAYS AVAILABLE AT NO CHARGE ON A FIRST-COME, FIRST-SERVED BASIS:**

- David Douglas Community Park
- Fairgrounds Community Park
- Felida Community Park
- Fisher Basin Community Park
- LeRoy Haagen Memorial Community Park
- Hazel Dell Community Park
- Hockinson Meadows Community Park
- Marine Community Park
- Orchards Community Park
- Pacific Community Park



Visit each park's Web page  
for more information:  
[www.vanclarkparks-rec.org](http://www.vanclarkparks-rec.org)

