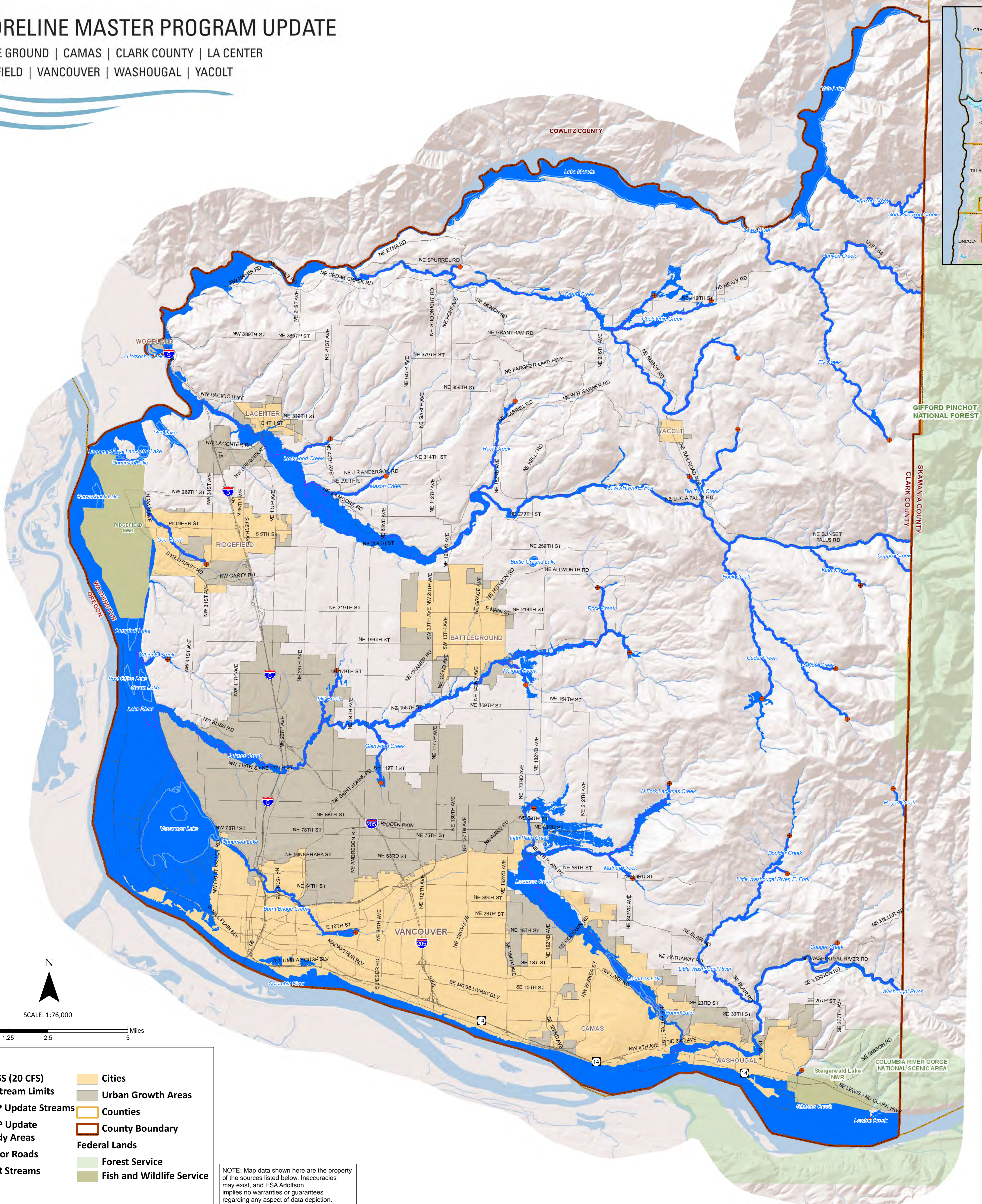
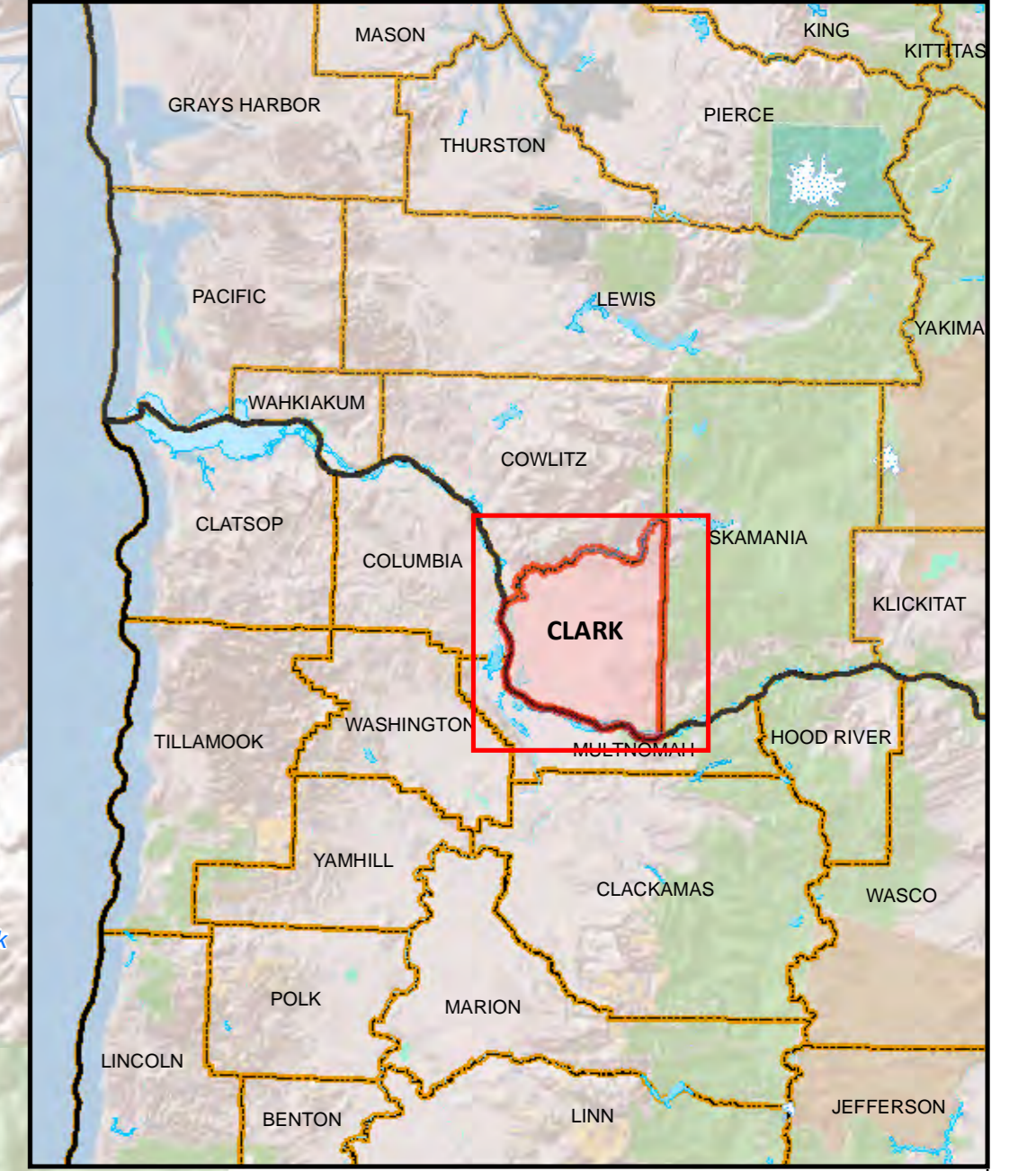


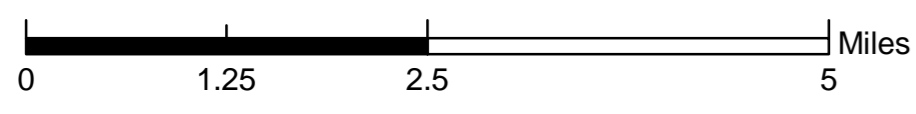
SHORELINE MASTER PROGRAM UPDATE

BATTLE GROUND | CAMAS | CLARK COUNTY | LA CENTER
RIDGEFIELD | VANCOUVER | WASHOUGAL | YACOLT

LOCATION MAP



SCALE: 1:76,000



Legend	
USGS (20 CFS)	Cities
Upstream Limits	Urban Growth Areas
SMP Update Streams	Counties
SMP Update Study Areas	County Boundary
Major Roads	Federal Lands
DNR Streams	Forest Service
	Fish and Wildlife Service

NOTE: Map data shown here are the property of the sources listed below. Inaccuracies may exist, and ESA Adolfsen implies no warranties or guarantees regarding any aspect of data depiction.

DRAFT

Map 4 SMP UPDATE STUDY AREAS CLARK COUNTY, WASHINGTON

Shoreline Master Program Update Rivers and Streams and Length (in Miles)			
No.	Stream Name	Length (Miles)	
1	Big Tree Creek	3.66	
2	Boulder Creek	1.25	
3	Burnt Bridge Creek	6.60	
4	Canope Creek	8.03	
5	Cedar Creek	20.41	
6	Cedar Creek	3.26	
7	Chelatchie Creek	4.25	
8	Chelatchie Creek, Unnamed Tributary	1.71	
9	Columbia River	41.54	
10	Copper Creek	1.64	
11	Cougar Creek	1.39	
12	Coyote Creek	1.23	
13	Fifth Plain Creek	2.27	
14	Fly Creek	7.57	
15	Goose Creek	5.03	
16	Gibbons Creek	0.74	
17	Glenwood Creek	2.45	
18	Hagen Creek	1.08	
19	King Creek	2.40	
20	Lacamas Creek	17.95	
21	Lake River	7.31	
22	Lawton Creek	0.05	
23	Lewis River	44.30	
24	Lewis River, E. Fork	32.62	
25	Little Washougal River	8.31	
26	Little Washougal River, E. Fork	0.89	
27	Lockwood Creek	2.10	
28	Mason Creek	3.53	
29	Melny Creek	1.92	
30	Mill Creek	2.56	
31	Morgan Creek	1.53	
32	N Fork Lacamas Creek	0.64	
33	North Siouan Creek	1.40	
34	Pap Creek	0.51	
35	Rock Creek	4.21	
36	Rock Creek	1.86	
37	Rock Creek	8.52	
38	Salmon Creek	25.54	
39	Siouan Creek	4.89	
40	Washougal River	12.16	
41	Whipple Creek	2.06	
42	Yacolt Creek	0.70	
			Total Rivers & Streams: 301.23

Streams in bold indicate shoreline of statewide significance. Streams with an asterisk (*) indicate proposed study areas based on the USGS (1998) 20 CFS points.

Lakes and Reservoirs			
No.	Name	Perimeter (Miles)	
1	Battle Ground Lake	0.74	
2	Campbell Lake	2.48	
3	Caracasback Lake	2.15	
4	Green Lake	2.38	
5	Horseshoe Lake	2.71	
6	Lacamas Lake	6.29	
7	Lake Merwin	27.45	
8	Lancaster Lake	1.34	
9	Mud Lake	2.28	
10	Post Office Lake	2.18	
11	Round Lake	1.89	
12	Unnamed Lake	4.70	
13	Vancouver Lake	12.44	
14	Vale Lake	20.98	
			Total Lakes: 90.00
			Grand Total: 391.23

Lakes in bold indicate shoreline of statewide significance.

SMA Grant Agreement No. G1000058
Task 2.10

Coordinate System: State Plane NAD1983 (N) Washington South FIPS 4602
Data Sources: Clark County, 2009; Dept of Ecology, 2003; ESRI, 2008
SMA Grant Agreement No. G1000058

