



Post sign should be placed on private property, not the planter strip.

Post sign is on private property behind utility pole.



Courtesy



Potential obstacles for someone who is sight impaired or attempting to navigate a sidewalk in a wheel chair or crutches are easily rectified. Place signs on one side of the walkway so pedestrians don't have to zigzag around obstacles.



Do not place signs adjacent to disabled parking spaces. As shown here, vans with chair elevators could not use the spot if a sign were placed next to this parking space, or if placed while van owner was shopping, they couldn't get access to the van.



City of Vancouver  
Development Review Services

4400 NE 77nd Ave  
P.O. Box 1995  
Vancouver, WA 98668-1995  
Phone: (360) 487-7800  
Fax: (360) 487-7805  
E-mail: [azam.babar@ci.vancouver.wa.us](mailto:azam.babar@ci.vancouver.wa.us)  
[www.ci.vancouver.wa.us](http://www.ci.vancouver.wa.us)



Clark County Association of REALTORS®

1514 Broadway, Suite 102  
P.O. Box 1010  
Vancouver, WA 98666-1010  
Phone: (360) 695-5980  
Fax: (360) 695-5980  
E-mail: [gad@ccrealtors.com](mailto:gad@ccrealtors.com)  
[www.ccrealtors.com](http://www.ccrealtors.com)



Greater Vancouver Chamber of Commerce

Broadway Business Center  
1101 Broadway, Suite 100  
Vancouver, WA 98660  
Phone: (360) 694-2588  
Fax: (360) 693-8279  
E-mail: [yourchamber@vancouverusa.com](mailto:yourchamber@vancouverusa.com)  
[www.vancouverusa.com](http://www.vancouverusa.com)



East Vancouver Business Association

P.O. Box 87207  
Vancouver WA 98687  
Phone: (360) 256-2320  
E-mail: [kris@evba.net](mailto:kris@evba.net)  
[www.evba.net](http://www.evba.net)

# Portable Signs in the Right-of-Way

in the City of Vancouver



# A guide to portable signs in the right-of-way

In March, 2004, the City of Vancouver changed the Sign Ordinance (VMC Title 20, 20.960.090) to allow temporary portable signs to be placed within the public right-of-way.

The ordinance applies to all businesses or business activities placing temporary signs within the City, including the downtown area. Businesses are subject to a fine of up to \$250 per violation.

The information below is a guide to the new regulations, but does not cover the new code language in its entirety. For details on the municipal code go to: [www.cityofvancouver.us/vmc](http://www.cityofvancouver.us/vmc)

For information call  
Planner Phonenumber  
(360) 487-7803

For violations, contact the  
Code Enforcement Hotline  
(360) 487-7810

*This information is brought to you by a partnership of the City of Vancouver, Clark County Association of Realtors, Greater Vancouver Chamber of Commerce and the East Vancouver Business Association.*

## Definitions

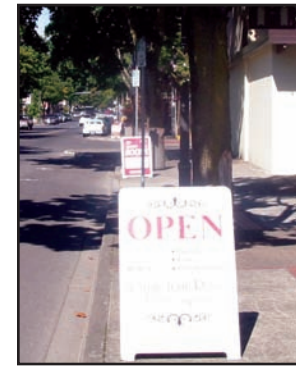
- Public Right-of-Way – Property held by the City for public access including streets and sidewalks.
- Permanent Portable Signs – Onsite signs placed in the right-of-way along the business frontage identifying the business during the hours the business is open.
- Temporary Portable Signs – Offsite signs in the right-of-way advertising an approved business activity and displayed on Friday, Saturday and Sunday between 10 am and 6 pm.

## Design

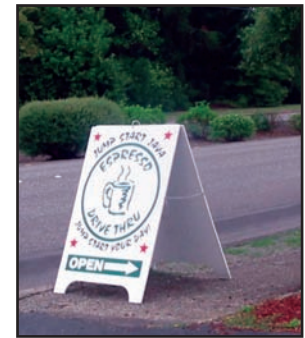
- Signs shall be sandwich board or A-frame.
- Maximum size - 9 square feet per sign face.
- Maximum height - 36 inches above the sidewalk/walkway.
- Signs shall be constructed of weather-resistant materials.
- No materials such as paper, balloons, windsocks or lights shall be attached.

## Placement

- Maximum of one on-site sign in the right-of-way along the business frontage.
- Maximum of three, Temporary Portable, off-site signs (see Definitions above) per approved business within a one-mile radius of business.
- Signs shall not reduce the continuous width of a sidewalk to less than five feet.
- Signs may not obstruct an entrance to a building, steps or driveway access.
- No sign may be placed within a sight vision clearance triangle.
- No sign may obstruct a wheelchair ramp.
- No sign may be placed within a roadway, traffic island, circle or median.



Signs shall be sandwich board or A-frame. (no stake signs)



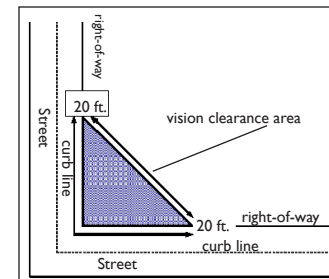
Signs shall not reduce the continuous width of a sidewalk to less than 5 feet.



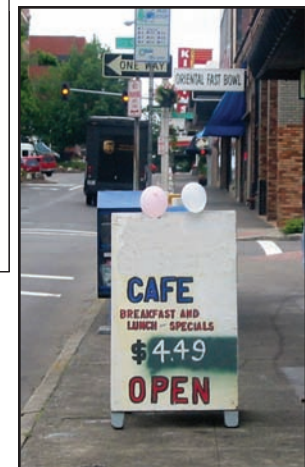
No sign may obstruct a wheelchair ramp.



No sign may be placed within a roadway, traffic island, circle or median.



No sign shall be placed within a sight vision clearance triangle.



No materials such as paper, balloons, windsocks, or lights shall be attached.

