

ANSUL R-102 6 GAL. SYSTEM

UL 300

SCOPE OF WORK:

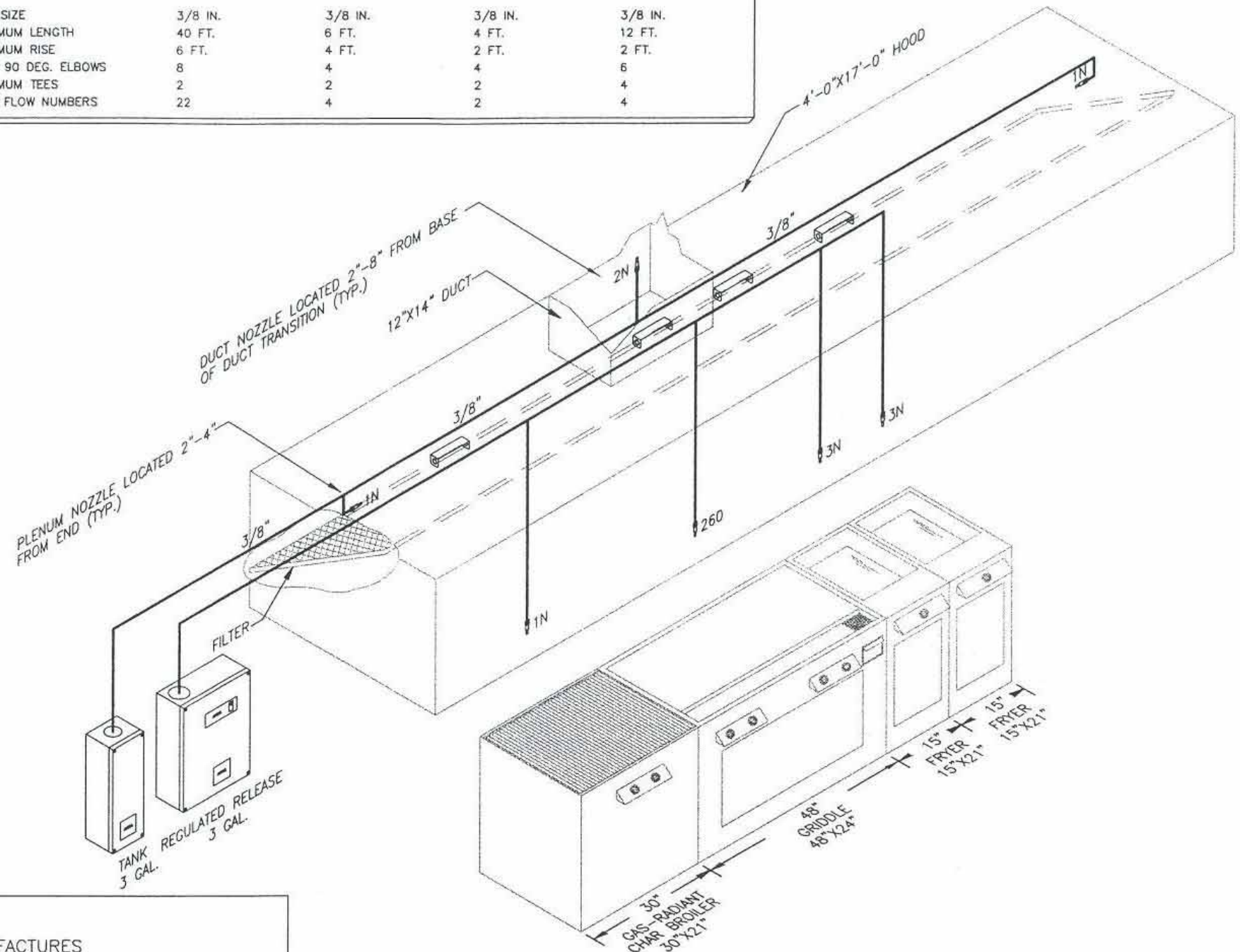
FIRE EXTINGUISHER SYSTEM INSTALLED AS PER MANUFACTURERS SPECIFICATIONS FOR RESTAURANT HOOD AND APPLIANCE PROTECTION. ALL STANDARDS AS PER NFPA 17A AND NFPA 96 2002 EDITION.

LEGEND:

ITEM	SYMBOL	DESCRIPTION	QTY.	FLOW POINTS	MOUNTING HEIGHT
1.) REMOTE PULL STATION	⊠	4835	1		48"-60"
2.) FUSIBLE LINK DETECTOR	⊠	FLK-450*	4		
3.) GAS SHUT-OFF VALVE	⊠	GVSO-3"	1		
4.) STORAGE CYLINDER	⊠	R-102 3 GAL.	0		
5.) RANGE NOZZLE	⊠	245	0	0	40"-50"
5A.) RANGE NOZZLE	⊠	1N	0	0	10"-32"
5B.) GRIDDLE NOZZLE	⊠	260	1	2	30"-50"
5C.) FRYER NOZZLE	⊠	230	0	0	27"-47"
5D.) FRYER NOZZLE	⊠	3N	2	6	21"-34"
6.) CHARBROILER NOZZLE	⊠	1N	1	1	15"-40"
7.) SALAMANDER NOZZLE	⊠	1/2N	0	0	
8.) DUCT NOZZLE	⊠	2N	0	0	
9.) PLENUM NOZZLE	⊠	1N	2	2	
10.) DUCT NOZZLE	⊠	2W	1	2	

TOTAL FLOW POINTS USED = 13
 MAXIMUM ALLOWED THIS SYSTEM = 22
 (11 FLOW POINTS PER 3 GAL. TANK.)

6 GALLON SYSTEM PIPING REQUIREMENTS	SUPPLY LINE	DUCT BRANCH LINE	PLENUM BRANCH LINE	APPLIANCE BRANCH LINE
1) PIPE SIZE	3/8 IN.	3/8 IN.	3/8 IN.	3/8 IN.
2) MAXIMUM LENGTH	40 FT.	6 FT.	4 FT.	12 FT.
3) MAXIMUM RISE	6 FT.	4 FT.	2 FT.	2 FT.
4) MAX. 90 DEG. ELBOWS	8	4	4	6
5) MAXIMUM TEES	2	2	2	4
6) MAX. FLOW NUMBERS	22	4	2	4



ANSUL CABLE LIMITATIONS

REMOTE PULL:
 MAX.#. ELBOWS=20
 MAX. 1/16" CABLE=150FT.
DETECTION:
 MAX.#. PULLEYS=20
 MAX. 1/16" CABLE=150FT.
 MAX.#. OF DETECTORS=15
GAS VALVE:
 MAX.#. PULLEYS=20
 MAX. 1/16" CABLE=150FT.

NOTE:

BUILDING FIRE ALARM SYSTEM TO BE TIED INTO THE KITCHEN FIRE SUPPRESSION SYSTEM VIA ELECTRICIAN SHUNT TRIP AS REQUIRED BY AHJ. (BY OTHERS)

GENERAL NOTES

1. ALL INSTALLATION PROCEDURES ARE IN COMPLIANCE WITH MANUFACTURERS SPECIFICATIONS AND IN ACCORDANCE WITH NFPA 17 AND 96 2002 EDITION STANDARDS.
2. REMOTE PULL STATION IS MOUNTED NO HIGHER THAN 48" FROM FINISHED FLOOR AND ON WAY TO EGRESS.
3. THE HOOD EXTINGUISHING SYSTEM MUST BE INTERCONNECTED TO BUILDING FIRE ALARM UNDER SEPERATE PERMIT BY OTHERS IF APPLICABLE.
4. AUTOMATIC FUEL SHUT-DOWN DEVICE(S) SHALL SHUT DOWN ALL SOURCES OF FUEL AND POWER.(INCLUDING ELECTRICAL OUTLETS)
5. A K-CLASS RATED FIRE EXTINGUISHER SHALL BE ACCESSIBLE WITHIN 30 FOOT UNOBSTRUCTED PATH FROM COOKING EQUIPMENT IS REQUIRED.
6. SYSTEM TO BE TEST FIRED AND WITNESSED BY LOCAL FIRE AUTHORITIES UPON COMPLETION.
7. IT WILL BE THE SOLE RESPONSIBILITY OF THE RESTAURANT OWNER TO MAINTAIN AND SERVICE THE SYSTEM AS PRESCRIBED BY LOCAL AND STATE LAWS.

FLOOR SHOULD BE MARKED FOR APPLIANCE LOCATION

ALL PIPE AND FITTINGS BLK. IRON SCH. 40

ANSUL R-102 6 GAL. FIRE SUPPRESSION SYSTEM
 SCALE:NONE

SAMPLE FIRE PROTECTION COMPANY
 12345 S.E. 123 ST
 VANCOUVER, WA 98668
 SALES (360) 555-1212
 FAX (360) 555-1212 E-MAIL:

REV.	ISSUE COMMENTS	DATE	CHK'D	DRN	PROJ.
0	FOR APPROVAL	12/10/05	AHU	AHU	1234567

SCALE: NTS
 ANSUL R-102 6 GAL.
 NFPA 13.96 2002 EDITION SYSTEM

SAMPLE RESTAURANT
 KITCHEN FIRE SUPPRESSION
 900 W. EVERGREEN BV
 VANCOUVER, WA 98660

SampleRestaurant.dwg
FS-1
 SHEET 1 OF 1