

OVERVIEW OF REGIONAL FINANCING TOOLS AND STRATEGIES

2

A Healthy, Livable and Sustainable Vancouver

Alternative methods of providing park and recreation services

Alternative methods to providing parks and recreation services

3

- Special Districts
 - ▣ What are the options?
 - ▣ What is the purpose?
 - ▣ What geographic boundaries are included?
 - ▣ What are their function and powers?
 - ▣ How are they formed?
 - ▣ How are they governed?
- MPD Funding Example
 - ▣ Who has formed an MPD?
 - ▣ What are we doing to explore?

Alternative methods of providing park and recreation services

4

- Four types of Special Districts relating to parks and recreation;
- Special District/Special Purpose District- Any unit of local government other than a city, town, county, or school district;
- Special purpose districts are generally created to meet a specific need of the local community. The need may be a new service or a higher level of an existing service;

Alternative methods of providing park and recreation services

5

- Enabling legislation sets forth the purpose of the district, procedures for formation, powers, functions and duties, composition of the governing body, methods of finance, and other provisions;
- The options are...
 - ▣ Park and Recreation District (RCW 36.69)
 - ▣ Joint Park and Recreation District (RCW 36.69.420 - .460)
 - ▣ Park and Recreation Service Area (RCW 36.68.400)
 - ▣ Metropolitan Park District (RCW 35.61)

Park and Recreation District (PRD)

- Purpose (enabled in 1957)
 - ▣ Provide leisure-time activities and recreation facilities (parks, playgrounds, pools, golf courses, paths, community centers, arboretums, campgrounds, boat launches, etc.)
- Geographic boundaries
 - ▣ May include unincorporated area, incorporated cities and towns if so authorized by the city or town and may include one or more counties (Joint PRD)



Park and Recreation District (PRD)

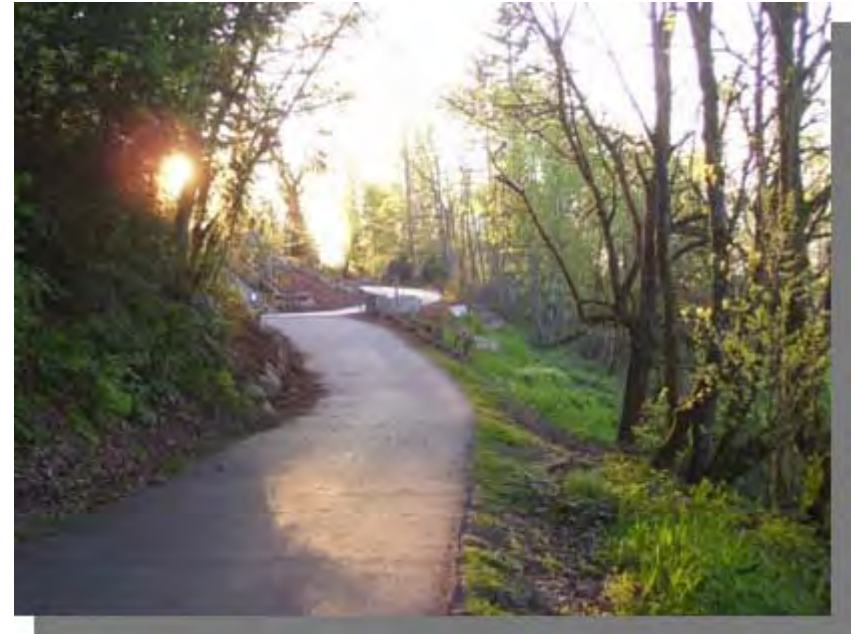
7

- Function and powers
 - ▣ Acquire and hold real and personal property, to make contracts, to borrow money, to sue and be sued, to make or establish charges, fees, rates, rentals, to make and enforce rules and regulations, to operate jointly with other government units, to acquire, construct, maintain and operate recreation facilities
 - ▣ May make improvements or acquire property by formation of a LID
 - ▣ May issue revenue bonds
 - ▣ May issue G.O. bonds (voter approved or PRD authority)
- Formed by (50% majority)
 - ▣ Petition (15% registered voters residing in the area); requires resolution of city or town approving inclusion of the area with corporate limits of city or town

Park and Recreation District (PRD)

8

- Governed by
 - ▣ Independent municipal corporation with board of 5 commissioners elected from designated districts for staggered, 4 year terms;
- Approximately 25 PRD's
- Requires SEPA review (“nonproject action”)



Park and Recreation Service Area (PRSA)

- Purpose (enabled in 1963)
 - ▣ Finance, acquire, construct, improve, maintain or operate any park, senior citizen activities center, zoo, aquarium and/or recreation facilities; and to provide higher level of park service;
- Geographic Boundary
 - ▣ May include unincorporated area, incorporated cities and towns if so authorized by the city or town and may include one or more counties
- Function and Powers
 - ▣ Acquire, construct, own or lease, operate parks and recreation facilities, to make contracts, to sue and be sued, may impose and collect fees & charges, **may impose admission fees**, may enter into contracts, power to enact and enforce police regulations;
 - ▣ May issue G.O. bonds (voter approved or PRSA authority)
 - ▣ **May accumulate reserves for stated capital purpose**
 - ▣ **May exercise power of eminent domain**

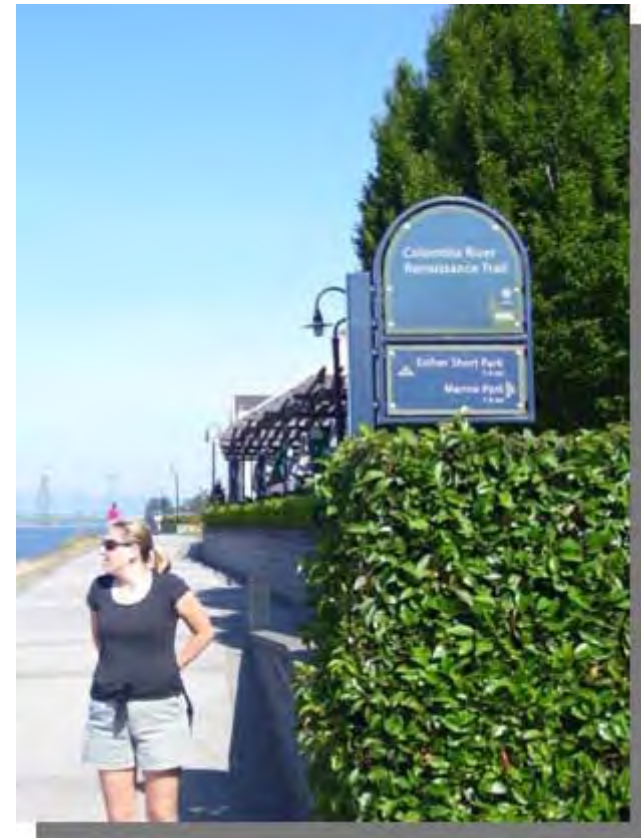
Park and Recreation Service Area (PRSA)

10

- Formed by (50% majority)
 - **Resolution** adopted by county legislative body **or by petition** of 10% of registered voters in the area;
 - Contents of petition or resolution must contain boundaries, description of purpose, an estimate of the initial cost of any capital improvements;
 - Upon accepting of petition or passage of resolution- the county legislative body orders an investigation into the feasibility of the proposed service area and determines initial cost
- Governed by
 - **Independent**, quasi-municipal corporation, **but governed by members of county legislative authority**, acting ex officio; if a city or town included, the PRSA is governed by an interlocal cooperation agreement; if it is a multi-county area then governed by interlocal cooperation agreement
- Approximately 7 PRSA's
- Requires SEPA review (“nonproject action”)

Metropolitan Park District (MPD)

- Purpose (enabled in 1907; modified in 2002)
 - ▣ Provide management, control, improvement, maintenance, and acquisition of parks, parkways, boulevards, and recreation facilities;
- Geographic Boundary
 - ▣ May include territory located in portions or all of one or more cities or counties or more cities and counties, when created or enlarged



Metropolitan Park District (MPD)

12

□ Function and Powers

- **May purchase, acquire and condemn lands**; may employ counsel; provide for park police; power to regulate, manage, control, improve, acquire, extend & maintain parks, parkways, aviation landings, playgrounds, etc., may authorize, conduct and manage amusements, bathhouses, purchase & sale of food, giving of concerts & entertainment, may provide services beneficial for the public or for production of revenue for expenditure for park purposes, **may sell, exchange or dispose of surplus property**;
- **May annex territory**
- **May issue and sell warrants, short-term obligations, or G.O. bonds** (voter approved or MPD Board approved);
- May issue revenue bonds
- May petition for the creation of a LID

Metropolitan Park District (MPD)

13

- Formed by (50% majority)
 - ▣ Initiative of at least 15% of registered voters in the area, or by resolution of the governing body or bodies of each city and/or county; or by petition or resolution submitting the question to the voters
- Governed by (1 of 3 options)
 - ▣ Five commissioners may be elected at the same election creating the district (staggered 6 year terms), or
 - ▣ For a district entirely within one city or the unincorporated area of one county, the legislative authority of the city or county may act as the metropolitan park board; or
 - ▣ For a district located in multiple cities or counties, each legislative authority may appoint one or more members to serve as the board
- 12 MPD's
- Requires SEPA review (“nonproject action”)

Distinguishing financial characteristics

14

- Formed w/50% vote
- “Junior Taxing Authority”- subject to proration at \$5.90 max
- Can propose regular property tax levy, annual excess property tax levies and General Obligation (G.O.) bonds
- Bonds require 60% approval
- Cannot levy Real Estate Excise Tax
 - ▣ Park and Recreation Districts (Proration #1)
 - Up to \$.60 per \$1,000 AV for up to six years w/60% approval
 - May issue LID bonds and Revenue Bonds
 - ▣ (Joint) Park and Recreation Service Areas (Proration #2)
 - Up to \$.60 per \$1,000 AV for up to six years w/60% approval
 - ▣ Metropolitan Park Districts (Proration #4)
 - Up to \$.75 per \$1,000 AV w/formation election; may be permanent
 - Can petition city for LID improvements
 - May issue Revenue Bonds

Advantages of MPD's

15

- May include territory in portions of one or more cities or counties;
- Most flexible mission/purpose;
- Provides greater and more secure funding that PRD's and PRA's
 - ▣ MPD's less subject to prorationing- 4th on list
- Higher maximum levy rate of up to \$.75 per \$1,000 AV (vs. \$.60);
- Ability to levy permanently

Greater Clark Parks District (GCPD)

- Purpose
 - ▣ To provide special, maintenance and operating funding for park development within the unincorporated urban area.
- Approved by voters in the unincorporated urban area of Clark County (Special election- February 2005; collections began in spring 2006)
- Serves approximately 137,000 residents
- 30 new neighborhood parks, five new community parks, seven miles of new walking trails, and additional sports field capacity to meet the needs of the county's youth sports programs (20 parks developed to date)
- 52 undeveloped sites prior to formation
- 76 developed acres prior to formation and approximately 450+ acres to be developed

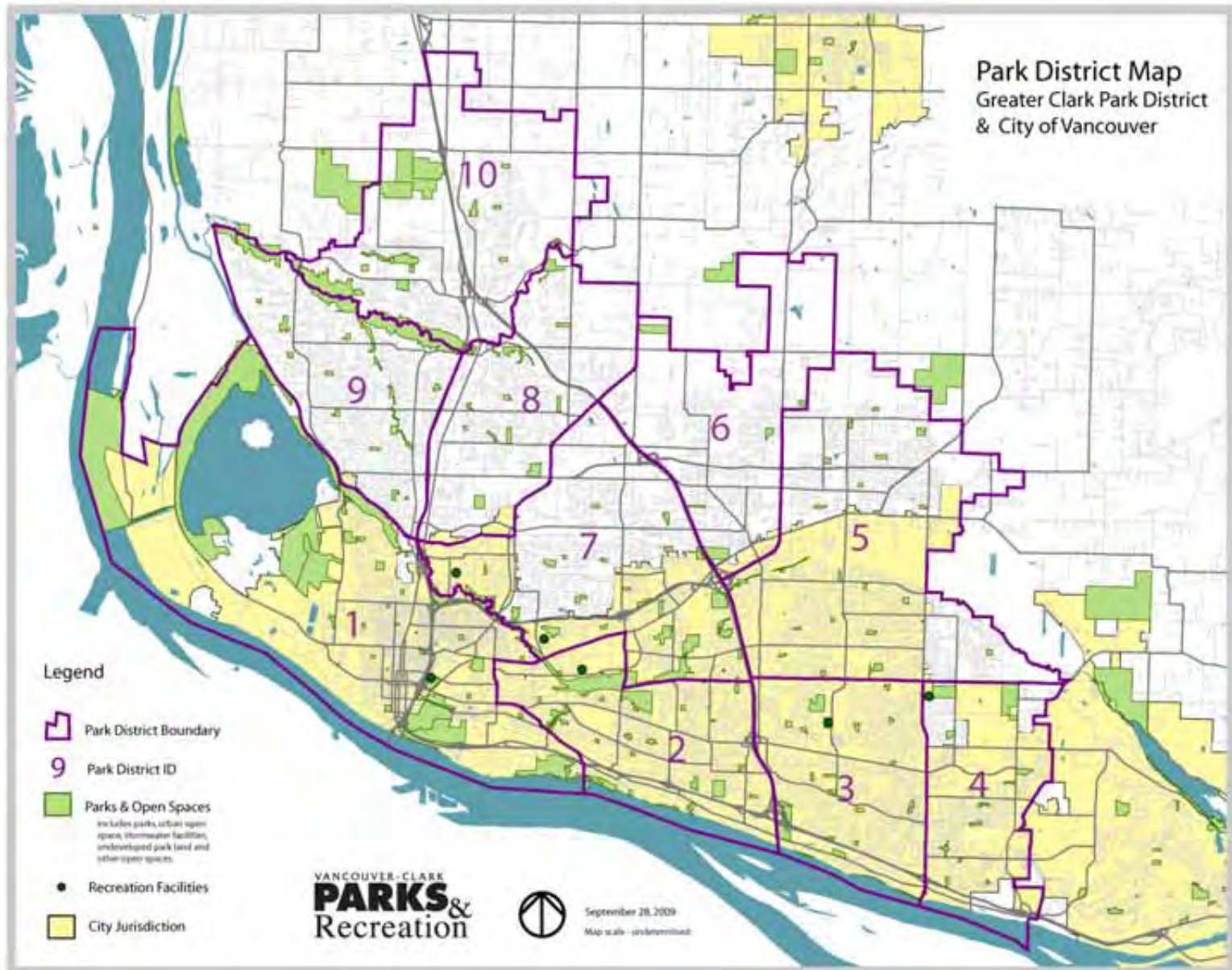
Greater Clark Parks District (GCPD)

17

- Permanent maintenance and operations funding
- Approved at maximum of \$.27 per 1,000 AV
- Currently levied at .26 per \$1,000 AV (2010)
 - ▣ Generates \$3,142,977
- Clark County Commissioners (ex-officio) serve as metropolitan park board







MPD Funding Example

- The 2010 Assessed value for COV was set at \$15,384,105,994
- At the maximum \$.75 levy= approx. **\$11.5 mil.**
- Remaining levy capacity within the COV is around \$1.60 on average. If the city/county/library all went to their statutory max., it would leave \$.30 +/-.

Who has implemented an MPD?

21

- Bainbridge Island (2004)
- Eastmont, Douglas County (2004)
- Fall City (2009)
- Greater Clark (2005)
- Key Peninsula (2004)
- Normandy Park (2009)
- Peninsula (2004)
- Pullman (2002)
- Shelton (2010)
- Si View- North Bend (2003)
- Tacoma (1909)
- William Shore, Clallam County (2009)

Alternative methods to providing parks and recreation services

22

- What are we doing to explore?
- Council provided direction at February 8 workshop
 - ▣ To initiate a preliminary/exploratory discussion with elected leaders of Clark County area communities
 - ▣ Pursue the establishment of a Blue Ribbon Commission to identify options and strategies on how to fund, manage, operate and govern the local and regional parks system
- Kick-off discussion w/CC communities- Monday, May 3rd with Mayor Leavitt, City Manager McDonnell, BOCC Chair Steve Stuart and County Administrator Bill Barron
 - ▣ Identify interest in/initiate Blue Ribbon Commission process



23

A Healthy, Livable and Sustainable Vancouver

Questions?

Vancouver City Council Retreats- 2010