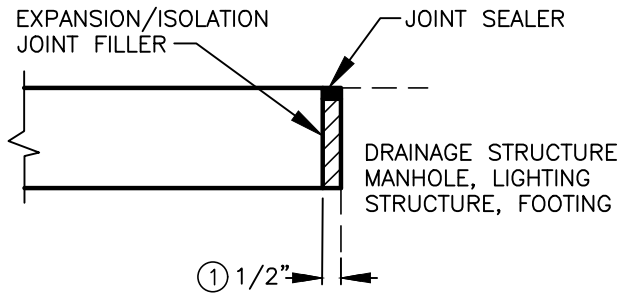


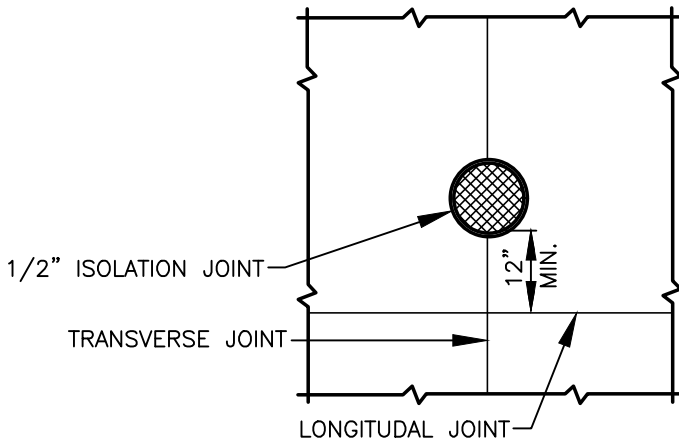
SURFACE JOINT

CONTRACTION JOINT

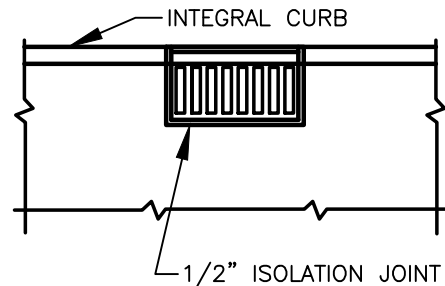


EXPANSION/ISOLATION JOINT DETAIL

① 3/8" JOINT FILLER FOR SIDEWALKS, ADA RAMPS, AND DRIVEWAYS



MANHOLES



CATCH BASINS

NOTES:

1. CONTRACTION JOINTS MAY BE USED IN PLACE OF SURFACE JOINTS.
2. CONSTRUCTION COLD JOINTS MAY BE USED IN PLACE OF CONTRACTION JOINTS.
3. CONCRETE PAVEMENT LOAD TRANSFER REQUIREMENTS ACROSS JOINTS SHALL BE DETERMINED BY PCC PAVEMENT DESIGN.
4. PARALLEL JOINTS SHALL BE SEPARATED BY A MINIMUM OF 2'.

I:\CITYPPS\AUTOCAD\STD_DETAILS\DRAWING_FILES\T05-02

REV NO.	DATE	BY	APPR	PUBLIC WORKS – STREETS AND TRANSPORTATION
1	8/04	RAW	MHA	
2	3/06	RAW	MHA	
3	2/07	RAW	MHA	
4	8/08	RAW	MHA	
5	7/14	RAW	MHA	
6	9/21	RAW	MHA	

APPROVED BY: *M.H. Pedulla*
ENGINEER MANAGER
APPROVED DATE: 9/1/2021



CONCRETE JOINTS	STANDARD PLAN NUMBER T05-02
-----------------	--------------------------------