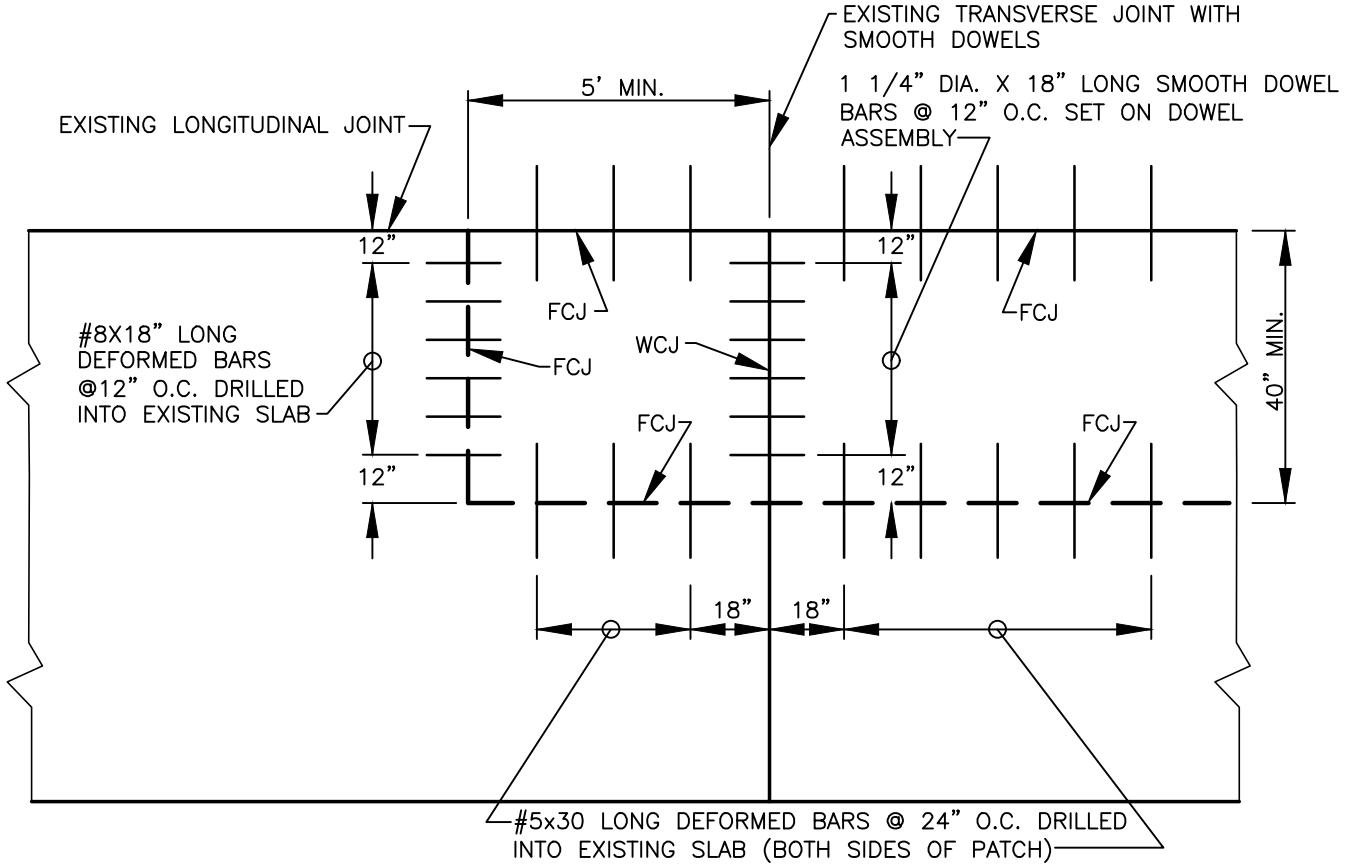


STEEL LAYOUT - TRANSVERSE EXTERIOR PATCH



STEEL LAYOUT - LONGITUDINAL EXTERIOR PATCH

I:\CITYPPS\AUTOCAD\STD_DETAILS\DRAWING_FILES\T05-12

REV. NO.	DATE	BY	APPR	PUBLIC WORKS - STREETS AND TRANSPORTATION
1	8/04	RAW	MHA	
2	3/06	RAW	MHA	
3	2/07	RAW	MHA	
4	8/08	RAW	MHA	
5	7/14	DJM	MHA	
6	9/21	RAW	MHA	

APPROVED BY: *M.H. Sedalla*
ENGINEER MANAGER
APPROVED DATE: 9/1/2021



STEEL LAYOUT FOR CONCRETE PATCH - EXTERIOR

STANDARD PLAN NUMBER
T05-12