

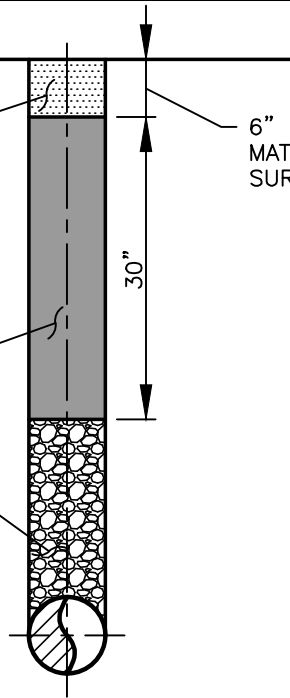
QUIKRETE FASTSET DOT MIX (OR SIMILAR IF APPROVED BY THE ENGINEER PRIOR TO USE)

6" MINIMUM, MATCH EXISTING SURFACE THICKNESS

CONTROL DENSITY FILL (CDF) REQUIRED. SEE T05-06A AND T05-06B FOR SPECIFICATIONS. THE ENGINEER MAY ALLOW USE OF BENTONITE. ADVANCE SUBMITTAL REQUIRED

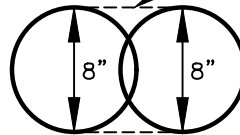
30"

CRUSHED GRANULAR IMPORT BACKFILL (COMPACT IN 6 TO 12 INCH LIFTS) MAY BE USED TO WITHIN 36" OF ASPHALT



CORED HOLE ALL

SAW CUT BETWEEN OVERLAPPING OR ADJACENT HOLES TO CREATE A STRAIGHT EDGE



NOTES: CORED HOLE PLAN VIEW AT OVERLAPPING OR ADJACENT HOLES

NON-PAVED SURFACE

1. FOR HOLES THROUGH SOIL OR GRAVEL ONLY, REPLACE WITH NATIVE/LIKE MATERIAL TO GRADE AND USE SAND LAYER TO PROTECT UTILITY (NOTE 2).
2. FOR HOLES THROUGH A SIDEWALK, REMOVE AFFECTED PANEL(S) AND REPLACE PER CITY OF VANCOUVER STANDARDS. JOINT TO JOINT REPLACEMENT REQUIRED OR AS DIRECTED BY ENGINEER.

PAVED ROADWAY

3. ALL STREETS WITH A PAVEMENT CONDITION INDEX (PCI) OF 70 OR GREATER REQUIRE AN 8" OR SMALLER CORED HOLE FOR POTHOLES OR TEST HOLES, OR AS DIRECTED BY THE ENGINEER.
4. HOLES SHALL BE PLACED OUTSIDE OF WHEEL PATH OF TRAVELWAY WHERE POSSIBLE.
5. 6" TO 12" LAYER OF SAND DIRECTLY ABOVE THE UTILITY MAY BE USED WHEN BACKFILLING TO PROTECT EXISTING UTILITY STRUCTURE (OPTIONAL/AS NEEDED).
6. NO USE OF COLD MIX OR REUSING EXISTING CORE FOR FINAL CAP.
7. OPENINGS LARGER THAN 8" WILL BE CONSIDERED OPEN CUT AND SHALL MEET REQUIREMENTS OF PAVEMENT RESTORATION LIMITS T05-01B, STANDARD TRENCH RESTORATION - HMA - CONTROLLED DENSITY FILL T05-06A AND T05-06B AND STANDARD TRENCH RESTORATION - HMA TRANSVERSE CUTS T05-07.
8. WHEN OPEN AND UNATTENDED COVER WITH PLATE 2 TIMES DIAMETER AND STABILIZE TO KEEP IN PLACES.
9. INSTALLATION OF MONITORING WELLS OR OTHER PERMANENT OR SEMI-PERMANENT FIXTURES REQUIRE A STREET USE PERMIT (TYPE D) PER VMC 11.60.040.

I:\CITYPPS\AUTOCAD\STD_DETAILS\DRAWING_FILES\T05-15

REV NO.	DATE	BY	APPR	
1	7/14	DJM	MHA	
2	3/17	RAW	MHA	
3	4/18	RAW	MHA	
4	9/21	RAW	MHA	

PUBLIC WORKS - STREETS AND TRANSPORTATION

APPROVED BY: *M.H. Pedulla*
ENGINEER MANAGER

APPROVED DATE: 9/1/2021



<p>CORED HOLE (POTHOLE/TEST HOLE/MONITORING WELL) SECTION AND PLAN VIEW</p>	<p>STANDARD PLAN NUMBER T05-15</p>
---	--