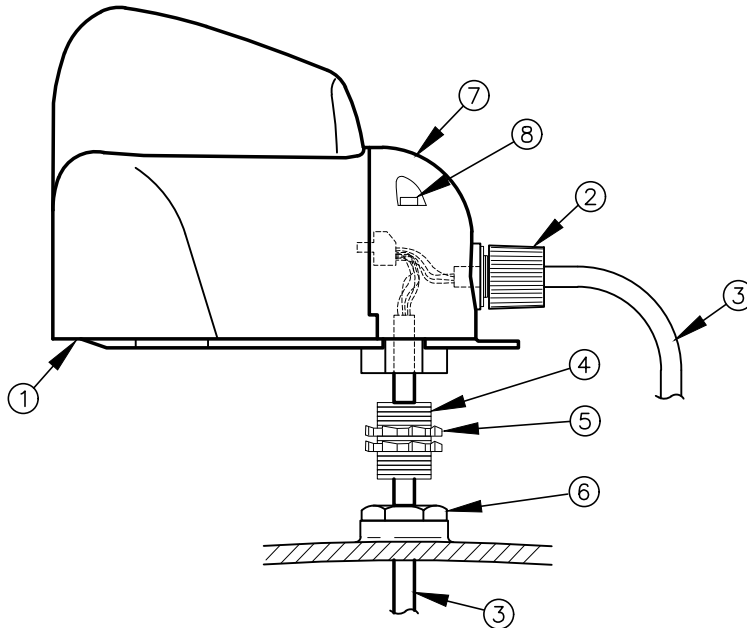
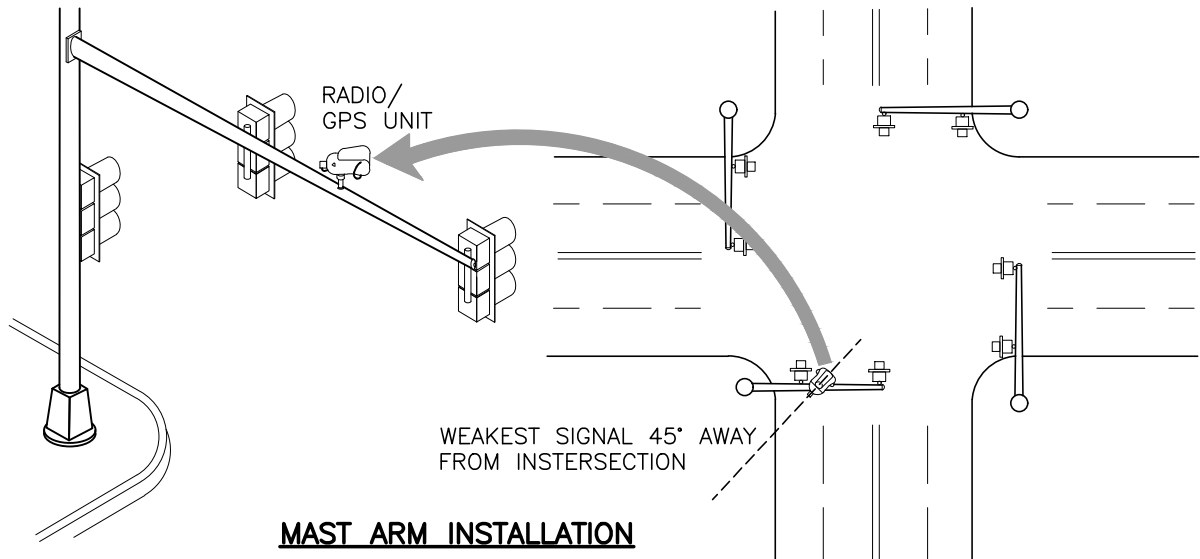


- ① INTERSECTION RADIO/GPS UNIT (MODEL 3100)
- ② CABLE RETAINER
- ③ RADIO/GPS CABLE (MODEL 1070)
- ④ NIPPLE/PIPE
- ⑤ LOCKNUT (2)
- ⑥ 3/4 INCH NPT MOUNT
- ⑦ WIRING COVER
- ⑧ COVER SCREWS (2)



NOTE:

1. THE RADIO/GPS UNIT SHALL BE MOUNTED IN A LOCATION THAT HAS AN UNOBSTRUCTED VIEW OF ALL APPROACHES OUT TO A DISTANCE OF 2,500 FEET.
2. BLOCKAGE OF APPROACHES BY THINGS SUCH AS BRIDGES, BUILDINGS, WALKWAYS AND TREES SHOULD BE AVOIDED.
3. THE RADIO/GPS UNIT IS USUALLY MOUNTED TO THE MAST ARM OR SPAN WIRE POLE NEAREST THE TRAFFIC CONTROLLER CABINET. IF AN APPROPRIATE MOUNTING LOCATION ON A MAST ARM OR SPAN WIRE POLE IS NOT AVAILABLE, YOU CAN MOUNT THE UNIT ON TO A SPAN WIRE. TRY TO USE A SIGNAL HEAD OR SIGN MOUNT TO MINIMIZE SWAY.
4. THE RADIO/GPS UNIT SHALL BE MOUNTED LEVEL AND AS HIGH AS POSSIBLE. DO NOT MOUNT UNIT UPSIDE DOWN.
5. THE RADIO/GPS UNIT SHALL HAVE UNOBSTRUCTED VIEW OF AT LEAST 50% OF THE SKY.
6. THE MOUNTING LOCATION SHALL BE SUCH THAT THE CABLE RUN FROM THE RADIO/GPS UNIT TO THE PHASE SELECTOR (LOCATED IN THE TRAFFIC CONTROLLER CABINET) IS NO MORE THAN 250 FEET.
7. THE RADIO/GPS CABLE MAY BE RUN THROUGH CONDUIT OR ATTACHED TO A MESSENGER WIRE. THE CABLE SHALL NOT BE SUSPENDED UNSUPPORTED.
8. THE RADIO/GPS UNIT SHALL BE ORIENTED SUCH THAT THE CABLE RETAINER IS FACING AN AREA FROM WHICH VEHICLES WILL NOT BE APPROACHING.
9. DRIP LOOP SHALL BE 6 TO 8 INCHES.
10. ALL HARDWARE FASTENERS SHALL BE STAINLESS STEEL, TORQUED TO MANUFACTURER'S RECOMMENDATIONS WITH LOCKNUTS.
11. POWER LEADS SHALL BE INSTALLED WITH SUITABLE COPPER OPEN SPADES.
12. CONTRACTOR SHALL UTILIZE TOOLS AS RECOMMENDED BY RADIO/GPS VENDOR.
13. ALL FASTENER PENETRATIONS OF CABINET SHALL BE SEALED WITH APPROVED METHOD.



MAST ARM INSTALLATION

I:\CITYPPS\AUTOCAD\STD_DETAILS\DRAWING_FILES\T20-11B

REV NO.	DATE	BY	APPR
1	1/15	RAW	CJC
2	7/19	RAW	CJC
3	9/21	RAW	CJC

PUBLIC WORKS – STREETS AND TRANSPORTATION

APPROVED BY: *[Signature]*
TRAFFIC ENGINEER MANAGER

APPROVED DATE: 9/1/2021



GPS OPTICOM
INSTALLATION

STANDARD PLAN
NUMBER
T20-11B