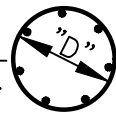


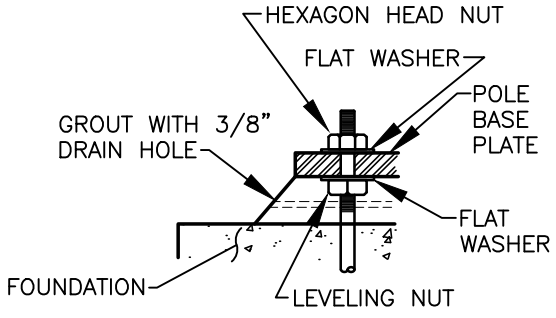
**REBAR CAGE DETAIL**

HORIZONTAL TIE BAR SHALL HAVE 15" MIN. LAP

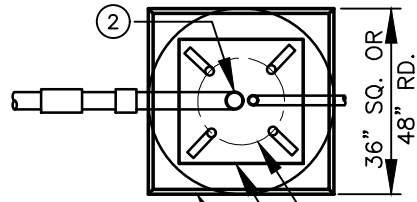


HORIZONTAL REBAR		
POLE FOUNDATION DIAMETER	REBAR CIR. "D"	SPACING
36"	30"	12" MAX. EXCEPT FOR 12'-0" AND 15'-0" BASE WHICH SHALL BE 9" MAX.
48"	40"	12" MAX. EXCEPT FOR 12'-0" AND 15'-0" BASE WHICH SHALL BE 9" MAX.

VERTICAL REBAR	
POLE FOUNDATION DEPTH	LENGTH "A"
8'-0"	7'-8"
10'-0"	9'-8"
12'-0"	11'-8"
15'-0"	14'-8"



**ANCHOR BOLT DETAIL**

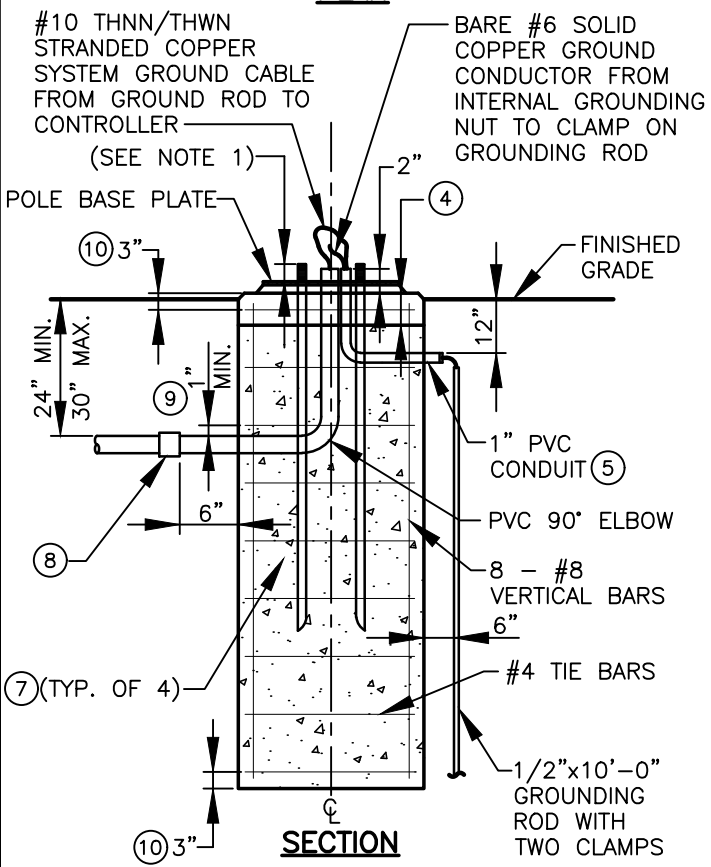


CHAMFER ALL EXPOSED EDGES UNLESS WHERE BASE ABUTS A SIDEWALK

BOLT CIRCLE (SEE NOTE 1)

POLE BASE PLATE

**PLAN**



**TRAFFIC SIGNAL POLE BASE**

**POLE BASE NOTES:**

- ① FINAL POLE ANCHOR, BOLT SIZE, ANCHOR BOLT FOUNDATION, AND BOLT CIRCLE SHALL BE AS PER MANUFACTURER'S RECOMMENDED PRACTICES.
- ② ALL CONDUITS AND ANCHOR BOLTS SHALL BE RIGIDLY INSTALLED BEFORE CONCRETE IS PLACED. ANCHORS SHALL BE SPACED BY MEANS OF A FACTORY CERTIFIED TEMPLATE OR DRAWING. THE CENTER OF WHICH SHALL COINCIDE WITH THE CENTER OF THE BASE.
- ③ ALL CONCRETE POLE BASES SHALL BE CONSOLIDATED BY AN INTERNAL TYPE VIBRATOR.
- ④ FINAL 6" OF CONCRETE FOUNDATION (POLE CAP) SHALL BE FORMED SQUARE. FINAL TOP ELEVATION SHALL MATCH SIDEWALK.
- ⑤ PVC CONDUIT ELBOWS IN CONCRETE FOUNDATIONS SHALL BE CONNECTED TO PVC CONDUIT WITH PVC PIPE NIPPLE ALL PVC CONDUIT AND ELBOWS PRIOR TO PVC PIPE NIPPLE SHALL BE CONSIDERED SUBSIDIARY TO THE TRAFFIC SIGNAL POLE BASE.
- ⑥ POLE BASE PLATE THICKNESS VARIES PER SIGNAL POLE SIZE.
- ⑦ ANCHOR BOLTS AND PLATE PER POLE MANUFACTURER. ANCHOR BOLT SHALL BE ACCURATELY LOCATED AND SECURED IN PLACE PRIOR TO POURING CONCRETE.
- ⑧ PVC COUPLING SHALL BE 4" MINIMUM OF THE 6" OUTSIDE FOUNDATION.
- ⑨ CONDUIT SHALL HAVE MINIMUM 1" CLEARANCE FROM REBAR AND ANCHOR BOLTS.
- ⑩ REBAR SHALL HAVE MINIMUM 3" COVER.
- ⑪ SEE WSDOT STANDARD PLAN J-26.10-XX FOR ADDITIONAL INFORMATION.

REFERENCES TO WSDOT STANDARD PLANS, USE THE MOST CURRENT VERSION OF THESE STANDARD PLANS.

I:\CITYPPS\AUTOCAD\STD\_DETAILS\DRAWING\_FILES\T20-15

REV NO.	DATE	BY	APPR	AGE
1	8/08	RAW	CJC	AGE
2	7/14	RAW	CJC	
3	4/18	RAW	CJC	
4	7/19	RAW	CJC	
5	9/21	RAW	CJC	

PUBLIC WORKS - STREETS AND TRANSPORTATION

APPROVED BY: *[Signature]*  
TRAFFIC ENGINEER MANAGER

APPROVED DATE: 9/1/2021



TYPE II, TYPE III, TYPE B AND TYPE S TRAFFIC SIGNAL POLE FOUNDATION DETAIL

STANDARD PLAN NUMBER  
T20-15