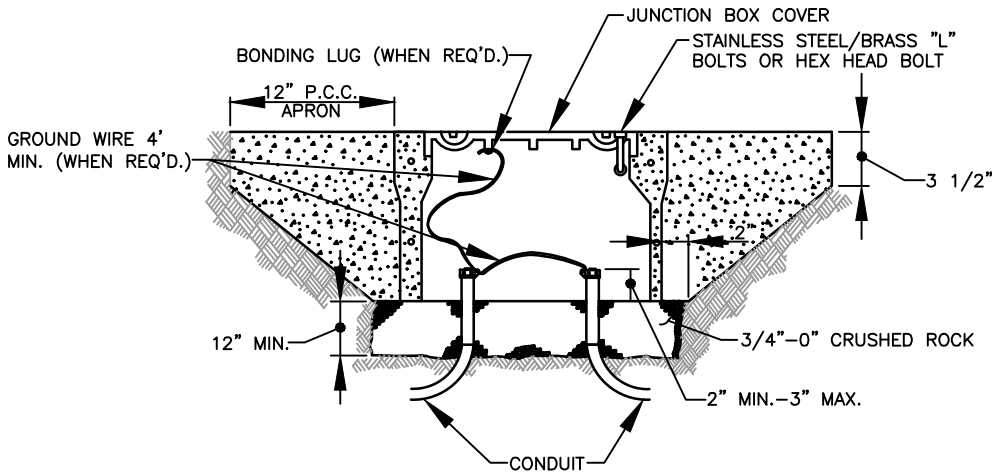
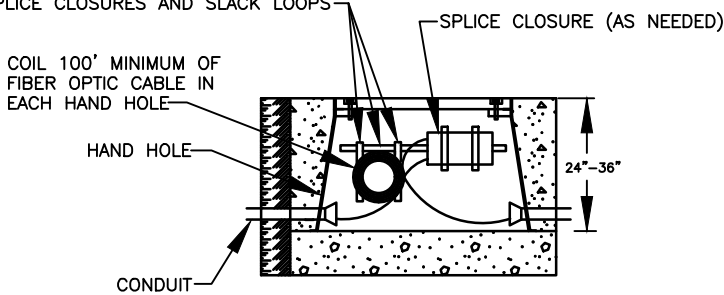


INSTALLATION IN SIDEWALK OR AT BACK OF CURB



**INSTALLATION WITH PORTLAND CEMENT CONCRETE APRON
(FOR INCIDENTAL TRAVEL AREAS ONLY; GRAVEL SHOULDERS, BEHIND GUARDRAIL, ETC.)**

FRAMING CHANNEL SHALL BE GALVANIZED STEEL UNISTRUT P1000 OR EQUIVALENT. FRAMING CHANNEL IS FOR MOUNTING OF SPLICE CLOSURES AND SLACK LOOPS



INSTALLATION OF HAND HOLE

TYPE	L	W	D	TYPE	L	W	D
JB1	17"	10"	12"	HH-1	24"	30"	24"
JB2	22"	12"	12"	HH-2	30"	48"	24"
JB3	30"	17"	12"	HH-3	30"	48"	36"

JUNCTION BOX/HAND HOLE DIMENSION TABLE

NOTES:


USE STAINLESS STEEL/BRASS BOLTS OR HEX HEAD BOLTS TO SECURE LID.

ALL CONCRETE TO HAVE A FINISHED PROFESSIONAL APPEARANCE IN ACCORDANCE WITH WSDOT SPECIFICATION 8-14 CEMENT CONCRETE SIDEWALKS.

I:\CITYPPS\AUTOCAD\STD_DETAILS\DRAWING_FILES\T20-17A

REV NO.	DATE	BY	APPR
1	2/21	OIS	CJC
2	9/21	RAW	CJC

PUBLIC WORKS – STREETS AND TRANSPORTATION

APPROVED BY: 
TRAFFIC ENGINEER MANAGER
APPROVED DATE: 9/1/2021



JUNCTION BOX AND HAND HOLE BOX

STANDARD PLAN NUMBER
T20-17A