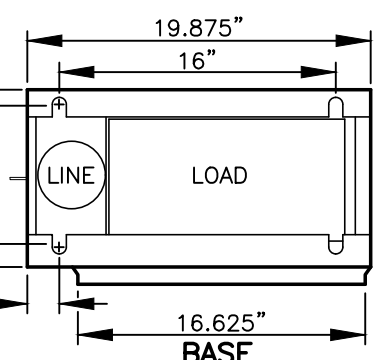


FRONT
(COVERS IN PLACE)
(STREET SIDE)

RIGHT SIDE



BASE

NOTES

1. SEE SERVICE ENCLOSURE REQUIREMENTS ON DETAIL T20-41.
2. SEE WIRING DIAGRAM ON DETAIL T23-01B.
3. ENCLOSURE SHALL BE TESCO CLASS 26-000M-A OR CITY APPROVED EQUAL PRIOR TO BID.

I:\CITYPPS\AUTOCAD\STD_DETAILS\DRAWING_FILES\T23-01A

REV. NO.	DATE	BY	APPR
1	3/06	RAW	AGE
2	2/07	RAW	AGE
3	8/08	RAW	AGE
4	1/15	RAW	CJC
5	7/18	RAW	CJC
6	9/21	RAW	CJC

PUBLIC WORKS - STREETS AND TRANSPORTATION

APPROVED BY: *[Signature]*
TRAFFIC ENGINEER MANAGER

APPROVED DATE: 9/1/2021



CABINET DETAIL FOR PEDESTRIAN CROSSING

STANDARD PLAN NUMBER
T23-01A