

BUFFER DATA				
LONGITUDINAL BUFFER SPACE = B	25	30	35	40
SPEED (MPH)	25	30	35	40
LENGTH (FEET)	155	200	250	305
BUFFER VEHICLE ROLL AHEAD DISTANCE = R				
TRANSPORTABLE ATTENUATOR	30 FEET			
MINIMUM HOST VEHICLE WEIGHT	15,000 LBS. THE MAXIMUM WEIGHT			
SHALL BE IN ACCORDANCE WITH THE	100 FEET			
MANUFACTURERS RECOMMENDATION.	MAX.			
PROTECTIVE VEHICLE	NO SPECIFIED			
MAY BE A WORK VEHICLE	DISTANCE			
STRATEGICALLY LOCATED TO	REQUIRED			
SHIELD THE WORK AREA.				

CHANNELIZATION DEVICE SPACING (FEET)		
MPH	TAPER	TANGENT
35/45	30	60
25/30	20	40

SIGN SPACING = X (1)			
PRINCIPAL ARTERIALS	45 MPH	500' ±	
PRINCIPAL, MINOR OR COLLECTOR ARTERIALS	35/40 MPH	350' ±	
PRINCIPAL, MINOR, COLLECTOR ARTERIALS, INDUSTRIAL AND LOCAL ACCESS ROADWAYS	25/30 MPH	200' ± (2)	
INDUSTRIAL AND LOCAL ACCESS ROADWAYS	25 MPH OR LESS	100' ± (2)	

(1) ALL SPACING MAY BE ADJUSTED TO ACCOMMODATE INTERSECTIONS AND DRIVeways.

(2) THIS SPACING MAY BE REDUCED IN URBAN AREAS TO FIT ROADWAY CONDITIONS.

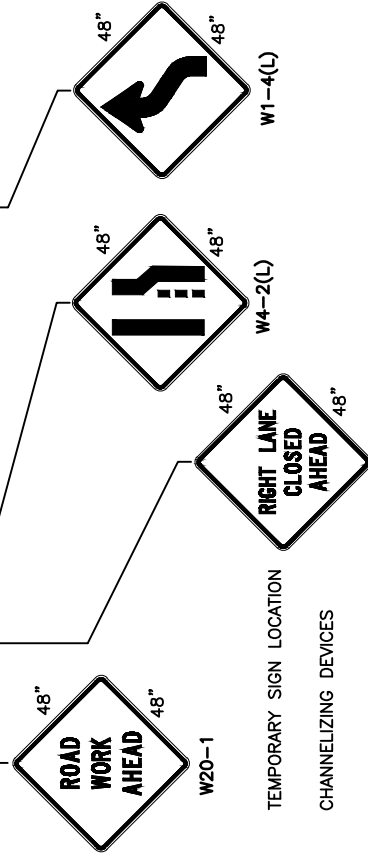
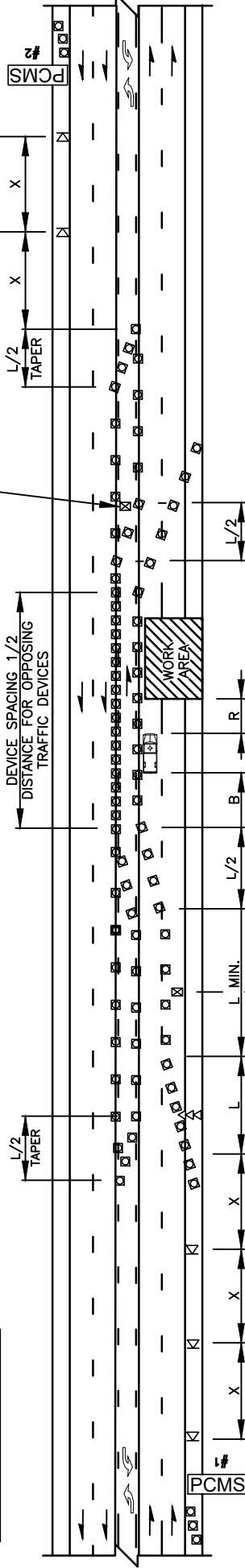
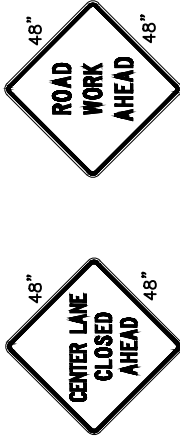
PCMS #1	PCMS #2
1	2
RIGHT LANE CLOSURE	CENTER LANE CLOSED
1 MILE AHEAD	NO LEFT TURNING
2.0 SEC	2.0 SEC

FIELD LOCATE IN ADVANCE OF TEMPORARY SIGNS.

PCMS #1	PCMS #2
1	2
CENTER LANE CLOSED	NO LEFT TURNING
2.0 SEC	2.0 SEC

FIELD LOCATE IN ADVANCE OF TEMPORARY SIGNS.

MINIMUM LANE CLOSURE TAPER LENGTH = L (FEET)			
LANE WIDTH (FEET)	POSTED SPEED (MPH)		
		25	30
10	105	150	205
11	115	165	225
12	125	180	245
			320
			540



NOTES:

- SEE SPECIAL PROVISIONS FOR WORK HOUR RESTRICTIONS.
- RECOMMEND EXTENDING DEVICE TAPER (L/3) ACROSS SHOULDER.
- FOR POSTED SPEED LIMITS OF 30 MPH OR LESS, USE SIGN W1-3 IN LIEU OF SIGN W1-4.
- ALL SIGNS ARE BLACK ON ORANGE UNLESS OTHERWISE DESIGNATED.

REV	NO.	DATE	BY	APPR	DATE
1	3/16	RAW	CJC		
2	3/17	RAW	CJC		
3	9/21	RAW	CJC		

PUBLIC WORKS - STREETS AND TRANSPORTATION

APPROVED BY: *[Signature]* TRAFFIC ENGINEER MANAGER
 APPROVED DATE: 9/1/2021

CITY OF **Vancouver** WASHINGTON

TRAFFIC CONTROL STANDARD PLAN
 RIGHT LANE CLOSURE WITH
 SHIFT 5 LANE ROADWAYS

STANDARD PLAN NUMBER
 TC10