

BUFFER DATA				
LONGITUDINAL BUFFER SPACE = B	25	30	35	40
SPEED (MPH)	25	30	35	40
LENGTH (FEET)	155	200	250	305
BUFFER VEHICLE ROLL AHEAD DISTANCE = R	30 FEET MIN. TO 100 FEET MAX.			
TRANSPORTABLE ATTENUATOR	NO SPECIFIED DISTANCE REQUIRED			
MINIMUM HOST VEHICLE WEIGHT 15,000 LBS. THE MAXIMUM WEIGHT SHALL BE IN ACCORDANCE WITH THE MANUFACTURERS RECOMMENDATION.	NO SPECIFIED DISTANCE REQUIRED			
PROTECTIVE VEHICLE MAY BE A WORK VEHICLE STRATEGICALLY LOCATED TO SHIELD THE WORK AREA.	NO SPECIFIED DISTANCE REQUIRED			

CHANNELIZATION DEVICE SPACING (FEET)		
MPH	TAPER	TANGENT
35/45	30	60
25/30	20	40

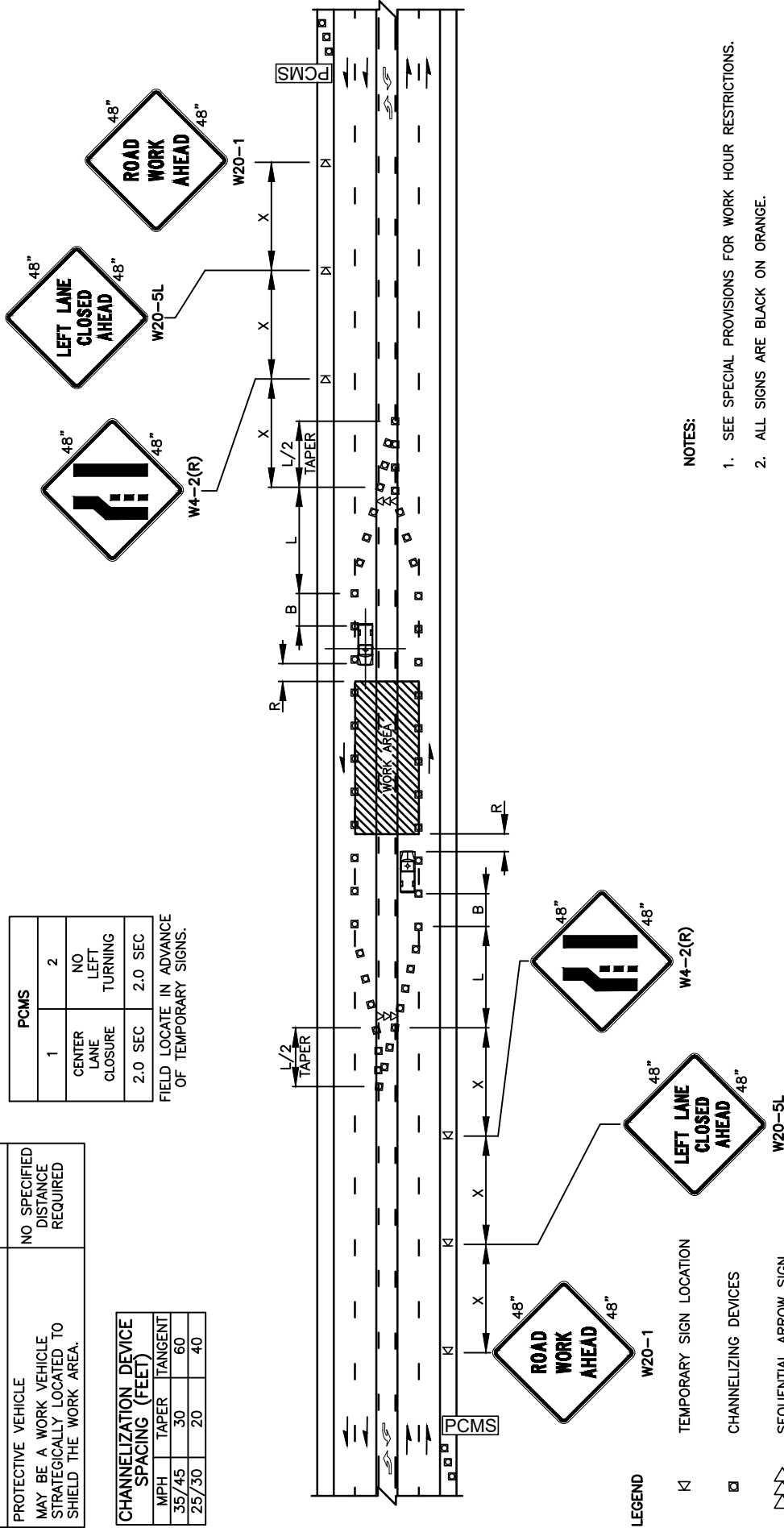
SIGN SPACING = X (1)		
PRINCIPAL ARTERIALS	45 MPH	500' ±
PRINCIPAL, MINOR OR COLLECTOR ARTERIALS	35/40 MPH	350' ±
PRINCIPAL, MINOR, COLLECTOR ARTERIALS, INDUSTRIAL AND LOCAL ACCESS ROADWAYS	25/30 MPH	200' ± (2)
INDUSTRIAL AND LOCAL ACCESS ROADWAYS	25 MPH OR LESS	100' ± (2)

(1) ALL SPACING MAY BE ADJUSTED TO ACCOMMODATE INTERSECTIONS AND DRIVEWAYS.  
 (2) THIS SPACING MAY BE REDUCED IN URBAN AREAS TO FIT ROADWAY CONDITIONS.

PCMS	
1	2
CENTER LANE CLOSURE	NO LEFT TURNING
2.0 SEC	2.0 SEC

FIELD LOCATE IN ADVANCE OF TEMPORARY SIGNS.

MINIMUM LANE CLOSURE TAPER LENGTH = L (FEET)			
LANE WIDTH (FEET)	POSTED SPEED (MPH)		
		25	30
10	105	150	205
11	115	165	225
12	125	180	245
			320
			540



**NOTES:**

1. SEE SPECIAL PROVISIONS FOR WORK HOUR RESTRICTIONS.
2. ALL SIGNS ARE BLACK ON ORANGE.

REV	NO.	DATE	BY	APP'D	DESCRIPTION
1	3/16	RAW	CJC		PUBLIC WORKS - STREETS AND TRANSPORTATION
2	3/17	RAW	CJC		
3	9/21	RAW	CJC		

APPROVED BY: *[Signature]* TRAFFIC ENGINEER MANAGER  
 APPROVED DATE: 9/17/2021



TRAFFIC CONTROL STANDARD PLAN  
 LEFT LANE AND CENTER TURN LANE  
 5 LANE ROADWAYS

STANDARD PLAN NUMBER

TC11

**LEGEND**

- KI TEMPORARY SIGN LOCATION
- CHANNELIZING DEVICES
- ▤ SEQUENTIAL ARROW SIGN
- ▤ PROTECTIVE VEHICLE
- ▤ PORTABLE CHANGEABLE MESSAGE SIGN