

SIGN SPACING = X (1)

PRINCIPAL ARTERIALS	45 MPH	500'±
PRINCIPAL, MINOR OR COLLECTOR ARTERIALS	35/40 MPH	350'±
PRINCIPAL, MINOR, COLLECTOR ARTERIALS, INDUSTRIAL AND LOCAL ACCESS ROADWAYS	25/30 MPH	200'± (2)
INDUSTRIAL AND LOCAL ACCESS ROADWAYS	25 MPH OR LESS	100'± (2)

(1) ALL SPACING MAY BE ADJUSTED TO ACCOMMODATE INTERSECTIONS AND DRIVEWAYS.
 (2) THIS SPACING MAY BE REDUCED IN URBAN AREAS TO FIT ROADWAY CONDITIONS.

CHANNELIZATION DEVICE SPACING (FEET)

MPH	TAPER	TANGENT
35/45	30	60
25/30	20	40

MINIMUM LANE CLOSURE TAPER LENGTH = L (FEET)

LANE WIDTH (FEET)	POSTED SPEED (MPH)			
	25	30	35	40
10	105	150	205	270
11	115	165	225	295
12	125	180	245	320

PCMS

1	2
EXIT	USE
XXX	EXIT
CLOSED	XXX
2.0 SEC	2.0 SEC

FIELD LOCATE IN ADVANCE OF TEMPORARY SIGNS.

LEGEND

--- TYPE 3 BARRICADE

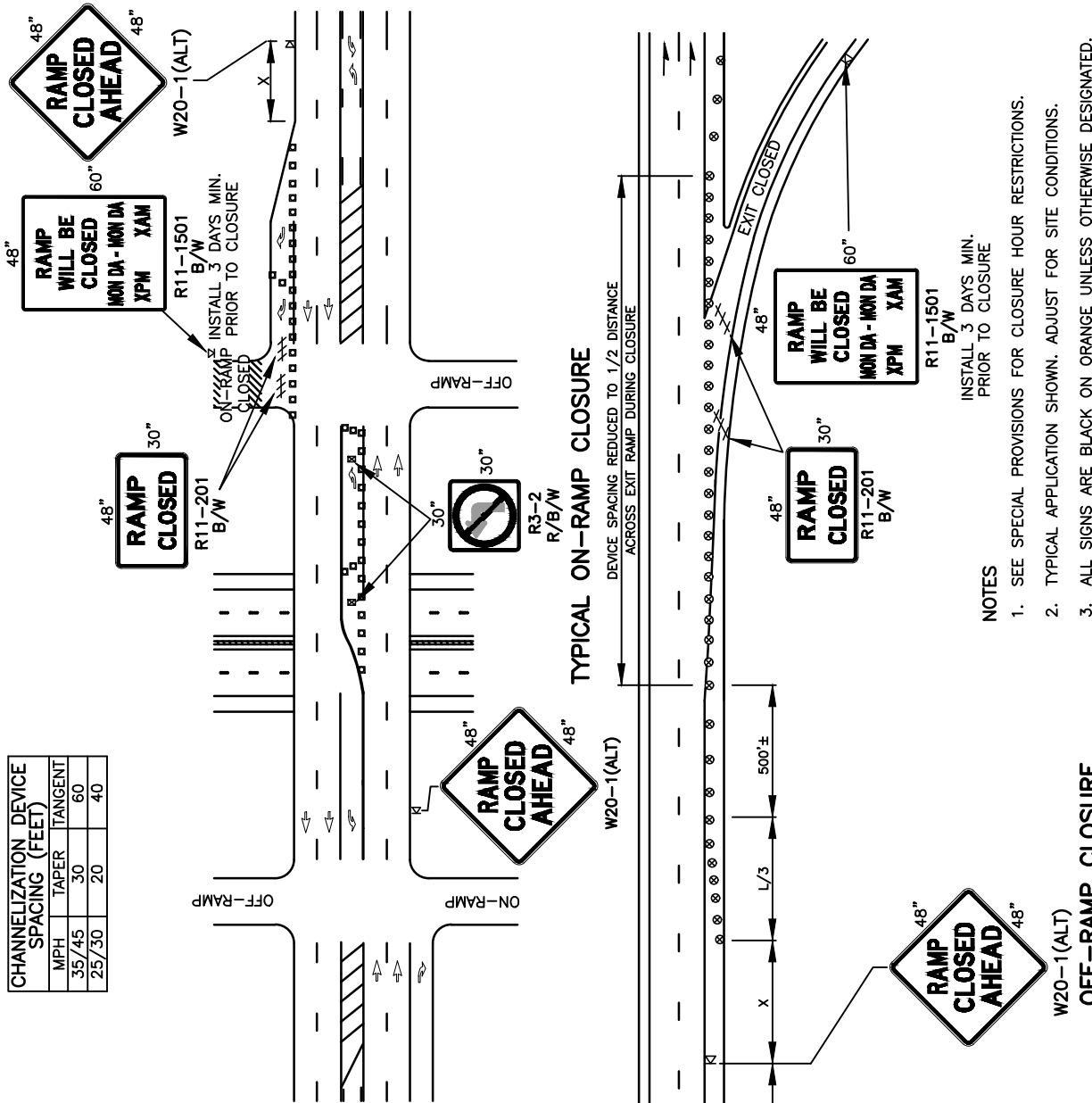
K1 TEMPORARY SIGN LOCATION

▣ CHANNELIZING DEVICES

⊗ TRAFFIC SAFETY DRUM

PCMS PORTABLE CHANGEABLE MESSAGE SIGN

⊠ TEMPORARY SIGN LOCATION (5' MOUNTING HEIGHT)



NOTES

1. SEE SPECIAL PROVISIONS FOR CLOSURE HOUR RESTRICTIONS. INSTALL 3 DAYS MIN. PRIOR TO CLOSURE.
2. TYPICAL APPLICATION SHOWN. ADJUST FOR SITE CONDITIONS.
3. ALL SIGNS ARE BLACK ON ORANGE UNLESS OTHERWISE DESIGNATED.

OFF-RAMP CLOSURE

REV	NO.	DATE	BY	APP'D	DESCRIPTION
1	1	5/16	RAW	CJC	PUBLIC WORKS - STREETS AND TRANSPORTATION
2	2	9/21	RAW	CJC	

APPROVED BY: *[Signature]* TRAFFIC ENGINEER MANAGER
 APPROVED DATE: 9/1/2021



TRAFFIC CONTROL STANDARD PLAN
 SHORT TERM
 RAMP CLOSURES

STANDARD PLAN NUMBER
 TC13