

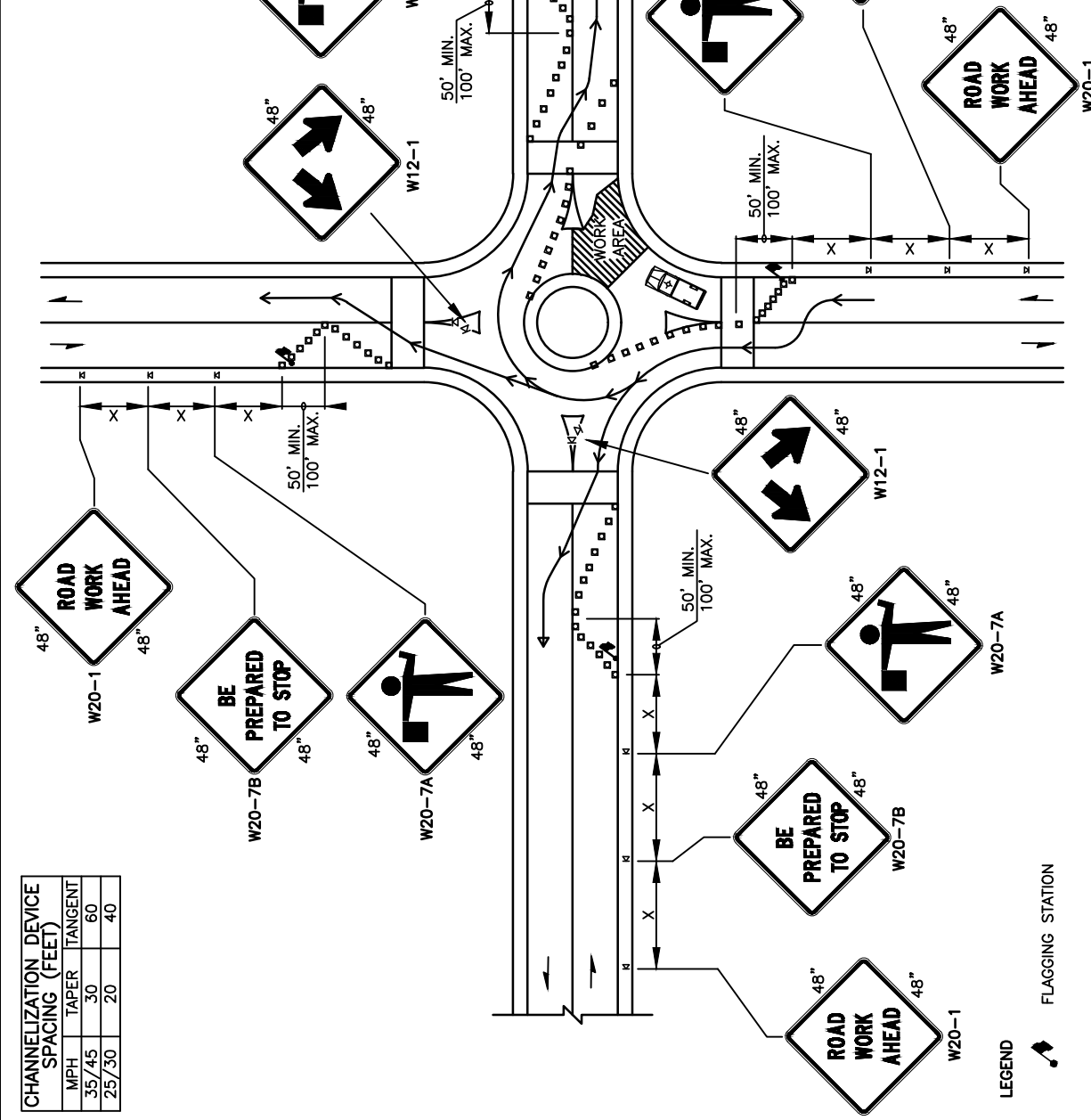
SIGN SPACING = X (1)

PRINCIPAL ARTERIALS	45 MPH	500'±
PRINCIPAL, MINOR OR COLLECTOR ARTERIALS	35/40 MPH	350'±
PRINCIPAL, MINOR, COLLECTOR ARTERIALS, INDUSTRIAL AND LOCAL ACCESS ROADWAYS	25/30 MPH	200'± (2)
INDUSTRIAL AND LOCAL ACCESS ROADWAYS	25 MPH OR LESS	100'± (2)

(1) ALL SPACING MAY BE ADJUSTED TO ACCOMMODATE INTERSECTIONS AND DRIVEWAYS.
 (2) THIS SPACING MAY BE REDUCED IN URBAN AREAS TO FIT ROADWAY CONDITIONS.

CHANNELIZATION DEVICE SPACING (FEET)

MPH	TAPER	TANGENT
35/45	30	60
25/30	20	40



NOTES

- NIGHT WORK REQUIRES ADDITIONAL ROADWAY LIGHTING AT FLAGGING STATIONS, SEE STANDARD SPECIFICATIONS FOR ADDITIONAL DETAILS.
- PROTECTIVE VEHICLE RECOMMENDED - MAY BE A WORK VEHICLE.
- TYPICAL APPLICATION SHOWN, ADJUST FOR SITE CONDITIONS.

REV. NO.	DATE	BY	APPROVED
1	5/16	RAW/CJC	CJC
2	9/21	RAW/CJC	CJC

PUBLIC WORKS - STREETS AND TRANSPORTATION

APPROVED BY: *[Signature]*
 TRAFFIC ENGINEER MANAGER 9/17/2021

APPROVED DATE:

LEGEND

- FLAGGING STATION
- TEMPORARY SIGN LOCATION
- CHANNELIZING DEVICES
- PROTECTIVE VEHICLE - RECOMMENDED

CITY OF Vancouver WASHINGTON

TRAFFIC CONTROL STANDARD PLAN
 TYPICAL ROUNDABOUT
 FLAGGING OPERATION

STANDARD PLAN NUMBER
 TC18