

MINIMUM LANE CLOSURE TAPER LENGTH = L (FEET)

LANE WIDTH (FEET)	POSTED SPEED (MPH)				
	25	30	35	40	45
10	105	150	205	270	450
11	115	165	225	295	495
12	125	180	245	320	540

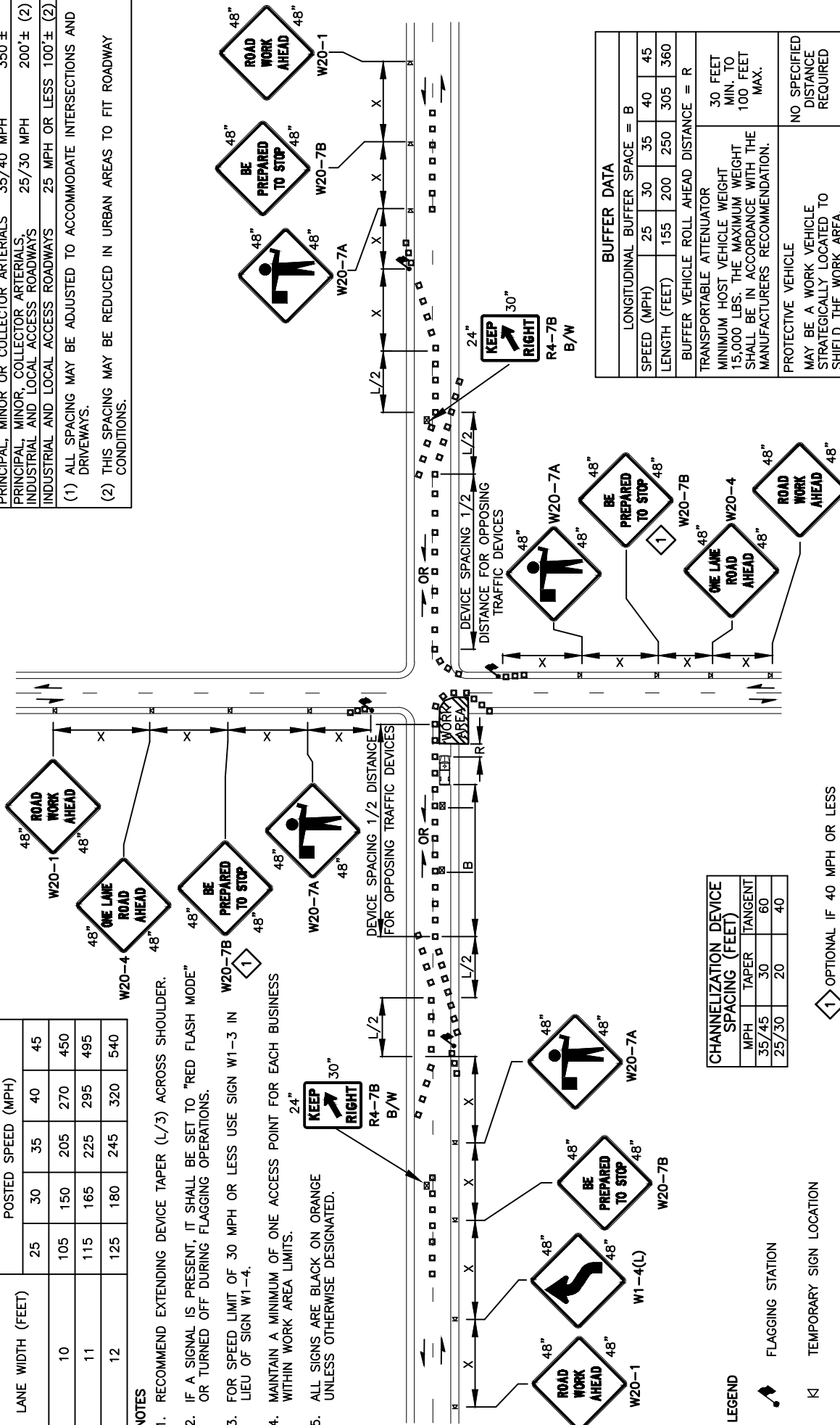
NOTES

1. RECOMMEND EXTENDING DEVICE TAPER (L/3) ACROSS SHOULDER.
2. IF A SIGNAL IS PRESENT, IT SHALL BE SET TO "RED FLASH MODE" OR TURNED OFF DURING FLAGGING OPERATIONS.
3. FOR SPEED LIMIT OF 30 MPH OR LESS USE SIGN W1-3 IN LIEU OF SIGN W1-4.
4. MAINTAIN A MINIMUM OF ONE ACCESS POINT FOR EACH BUSINESS WITHIN WORK AREA LIMITS.
5. ALL SIGNS ARE BLACK ON ORANGE UNLESS OTHERWISE DESIGNATED.

SIGN SPACING = X (1)

PRINCIPAL ARTERIALS	45 MPH	500'±
PRINCIPAL, MINOR OR COLLECTOR ARTERIALS	35/40 MPH	350'±
PRINCIPAL, MINOR, COLLECTOR ARTERIALS INDUSTRIAL AND LOCAL ACCESS ROADWAYS	25/30 MPH	200'± (2)
INDUSTRIAL AND LOCAL ACCESS ROADWAYS	25 MPH OR LESS	100'± (2)

(1) ALL SPACING MAY BE ADJUSTED TO ACCOMMODATE INTERSECTIONS AND DRIVEWAYS.
 (2) THIS SPACING MAY BE REDUCED IN URBAN AREAS TO FIT ROADWAY CONDITIONS.



CHANNELIZATION DEVICE SPACING (FEET)

MPH	TAPER	TANGENT
35/45	30	60
25/30	20	40

BUFFER DATA

LONGITUDINAL BUFFER SPACE = B					
SPEED (MPH)	25	30	35	40	45
LENGTH (FEET)	155	200	250	305	360
BUFFER VEHICLE ROLL AHEAD DISTANCE = R					
TRANSPORTABLE ATTENUATOR					
MINIMUM HOST VEHICLE WEIGHT 30 FEET					
15,000 LBS. THE MAXIMUM WEIGHT SHALL BE IN ACCORDANCE WITH THE MANUFACTURER'S RECOMMENDATION.					
PROTECTIVE VEHICLE					
MAY BE A WORK VEHICLE STRATEGICALLY LOCATED TO SHIELD THE WORK AREA.					
NO SPECIFIED DISTANCE REQUIRED					

OPTIONAL IF 40 MPH OR LESS

REVISIONS

REV. NO.	DATE	BY	APPR.	REASON
1	3/16	RAW	CJC	
2	9/21	RAW	CJC	

APPROVED BY: *[Signature]* TRAFFIC ENGINEER MANAGER
 APPROVED DATE: 9/1/2021



TRAFFIC CONTROL STANDARD PLAN
INTERSECTION LANE CLOSURE
2 LANE ROADWAYS

STANDARD PLAN NUMBER
TC19

- LEGEND**
- FLAGGING STATION
 - TEMPORARY SIGN LOCATION
 - CHANNELIZING DEVICES
 - PROTECTIVE VEHICLE - RECOMMENDED
 - TEMPORARY SIGN LOCATION (5' MOUNTING HEIGHT)