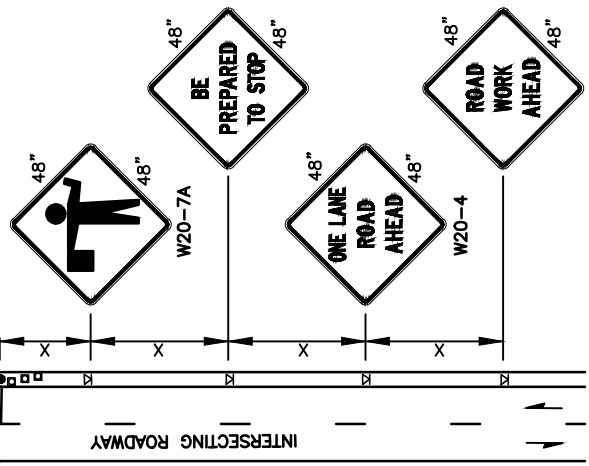
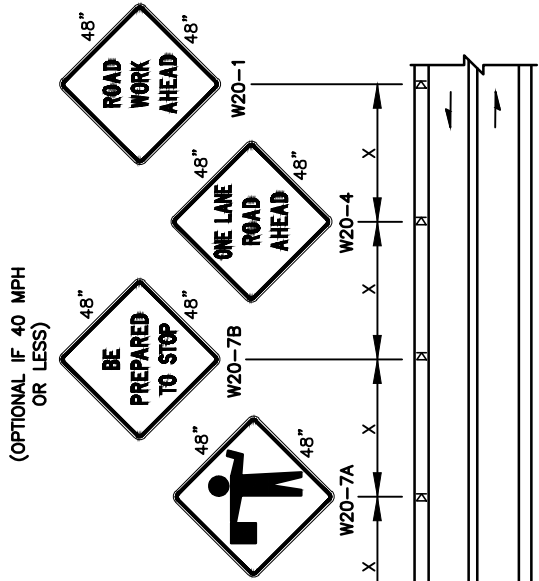


BUFFER DATA				
LONGITUDINAL BUFFER SPACE = B	25	35	40	45
SPEED (MPH)	25	30	35	40
LENGTH (FEET)	155	200	250	305
BUFFER VEHICLE ROLL AHEAD DISTANCE = R	30 FEET			
TRANSPORTABLE ATTENUATOR	MIN. TO 100 FEET MAX.			
PROTECTIVE VEHICLE	NO. SPECIFIED DISTANCE REQUIRED			
MAY BE A WORK VEHICLE STRATEGICALLY LOCATED TO SHIELD THE WORK AREA.	30 FEET MIN. TO 100 FEET MAX.			

SIGN SPACING = X (1)			
PRINCIPAL ARTERIALS	45 MPH	500' ±	
PRINCIPAL, MINOR OR COLLECTOR ARTERIALS	35/40 MPH	350' ±	
PRINCIPAL, MINOR, COLLECTOR ARTERIALS, INDUSTRIAL AND LOCAL ACCESS ROADWAYS	25/30 MPH	200' ± (2)	
INDUSTRIAL AND LOCAL ACCESS ROADWAYS	25 MPH OR LESS	100' ± (2)	

(1) ALL SPACING MAY BE ADJUSTED TO ACCOMMODATE INTERSECTIONS AND DRIVEWAYS.
 (2) THIS SPACING MAY BE REDUCED IN URBAN AREAS TO FIT ROADWAY CONDITIONS.

CHANNELIZATION DEVICE SPACING (FEET)		
MPH	TAPER	TANGENT
35/45	30	60
25/30	20	40



- LEGEND
- FLAGGING STATION
 - TEMPORARY SIGN LOCATION
 - CHANNELIZING DEVICES
 - PROTECTIVE VEHICLE
- NOTES:
1. ALL SIGNS ARE BLACK ON ORANGE.
 2. EXTENDING THE CHANNELIZING DEVICE TAPER ACROSS SHOULDER IS RECOMMENDED.
 3. NIGHT WORK REQUIRES ADDITIONAL ROADWAY LIGHTING AT FLAGGING STATIONS. SEE THE STANDARD SPECIFICATIONS FOR ADDITIONAL DETAILS.
 4. SEE SPECIAL PROVISIONS FOR WORK HOUR RESTRICTIONS.

REV. NO.	DATE	BY	APPR.	RAW	CJC	RAW	CJC
1	3/16						
2	9/21						

PUBLIC WORKS - STREETS AND TRANSPORTATION

APPROVED BY: TRAFFIC ENGINEER MANAGER
 APPROVED DATE: 9/17/2021

CITY OF **Vancouver** WASHINGTON

TRAFFIC CONTROL STANDARD PLAN
 ONE-LANE TWO WAY TRAFFIC CONTROL WITH FLAGGERS

STANDARD PLAN NUMBER
 TC1