

BUFFER DATA		LONGITUDINAL BUFFER SPACE = B	
SPEED (MPH)	25 30 35 40 45	25	30 35 40 45
LENGTH (FEET)	155 200 250 305 360	155	200 250 305 360
BUFFER VEHICLE ROLL AHEAD DISTANCE = R			
TRANSPORTABLE ATTENUATOR	30 FEET		
MINIMUM HOST VEHICLE WEIGHT	15,000 LBS.		
THE MAXIMUM WEIGHT SHALL BE IN ACCORDANCE WITH THE MANUFACTURERS RECOMMENDATION.			
PROTECTIVE VEHICLE	NO SPECIFIED DISTANCE REQUIRED		
MAY BE A WORK VEHICLE STRATEGICALLY LOCATED TO SHIELD THE WORK AREA.			

SIGN SPACING = X (1)		45 MPH		500' ±	
PRINCIPAL ARTERIALS	45 MPH	35/40 MPH	350' ±	25/30 MPH	200' ± (2)
PRINCIPAL, MINOR OR COLLECTOR ARTERIALS	35/40 MPH	25/30 MPH	100' ± (2)		
INDUSTRIAL AND LOCAL ACCESS ROADWAYS	25 MPH OR LESS				

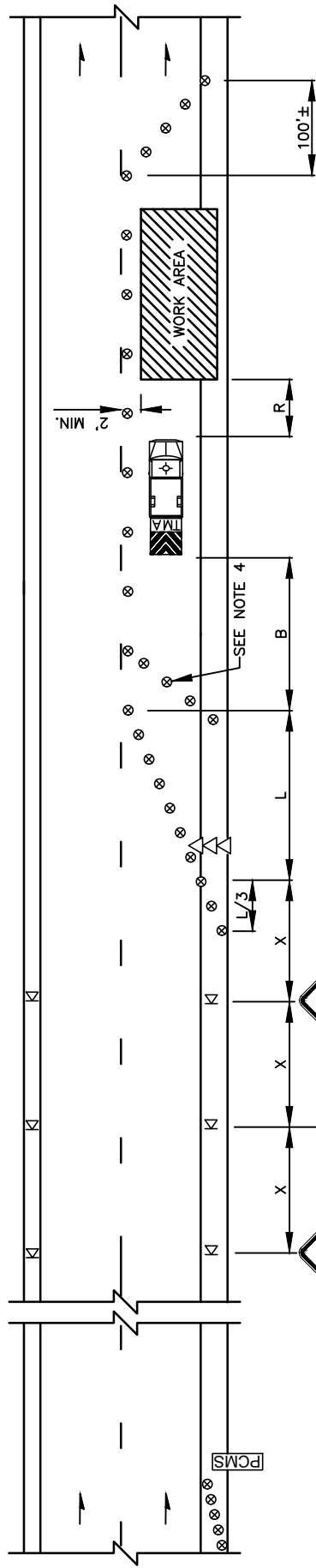
(1) ALL SPACING MAY BE ADJUSTED TO ACCOMMODATE INTERSECTIONS AND DRIVEWAYS.
 (2) THIS SPACING MAY BE REDUCED IN URBAN AREAS TO FIT ROADWAY CONDITIONS.

CHANNELIZATION DEVICE SPACING (FEET)		PCMS	
MPH	TAPER	TANGENT	
35/45	30	60	1 MILE AHEAD
25/30	20	40	2.0 SEC
			2.0 SEC

MINIMUM SHOULDER TAPER LENGTH = L/3 (FEET)		POSTED SPEED (MPH)	
SHOULDER WIDTH (FEET)		25	30 35 40 45
8		40	40 60 90 120
10		40	40 60 90 150

MINIMUM LANE CLOSURE TAPER LENGTH = L (FEET)		POSTED SPEED (MPH)	
LANE WIDTH (FEET)		25	30 35 40 45
10		105	150 205 270 450
11		115	165 225 295 495
12		125	180 245 320 540

USE A MINIMUM 3 DEVICES TAPER FOR SHOULDER LESS THEN 8'.



NOTES:

- SEE SPECIAL PROVISIONS FOR WORK HOUR RESTRICTIONS.
- EXTEND DEVICE TAPER AT L/3 ACROSS SHOULDER.
- DEVICES SHALL NOT ENCR OACH INTO THE ADJACENT LANE.
- USE TRANSVERSE DEVICES IN CLOSED LANE EVERY 1000' (FT) (RECOMMENDED).
- DEVICE SPACING FOR THE DOWNSTREAM TAPER SHALL BE 20' (FT).
- ALL SIGNS ARE BLACK ON ORANGE.

- LEGEND
- ▷▷ TEMPORARY SIGN LOCATION
 - ⊗ TRAFFIC SAFETY DRUM
 - ▷▷ SEQUENTIAL ARROW SIGN
 - ▷▷ TRANSPORTABLE ATTENUATOR
 - ▷▷ PORTABLE CHANGEABLE MESSAGE SIGN

REV	NO.	DATE	BY	APPR	REVISION
1	1	3/16	RAW/CJC	CJC	PUBLIC WORKS - STREETS AND TRANSPORTATION
2	2	9/21	RAW/CJC	CJC	APPROVED BY: [Signature] TRAFFIC ENGINEER MANAGER 9/1/2021

CITY OF **Vancouver** WASHINGTON

TRAFFIC CONTROL STANDARD PLAN
 SINGLE-LANE CLOSURE FOR MULTI-LANE ROADWAYS

STANDARD PLAN NUMBER
 TC3