

BUFFER DATA	
LONGITUDINAL BUFFER SPACE = B	
SPEED (MPH)	25 30 35 40 45
LENGTH (FEET)	155 200 250 305 360
BUFFER VEHICLE ROLL AHEAD DISTANCE = R	
TRANSPORTABLE ATTENUATOR	30 FEET
MINIMUM HOST VEHICLE WEIGHT	MIN. TO
SHALL BE IN ACCORDANCE WITH THE	100 FEET
MANUFACTURERS RECOMMENDATION.	MAX.
PROTECTIVE VEHICLE	NO SPECIFIED
MAY BE A WORK VEHICLE	DISTANCE
STRATEGICALLY LOCATED TO	REQUIRED
SHIELD THE WORK AREA.	

SIGN SPACING = X (1)	
PRINCIPAL ARTERIALS	45 MPH
PRINCIPAL, MINOR OR COLLECTOR ARTERIALS	35/40 MPH
PRINCIPAL, MINOR, COLLECTOR ARTERIALS, INDUSTRIAL AND LOCAL ACCESS ROADWAYS	25/30 MPH
INDUSTRIAL AND LOCAL ACCESS ROADWAYS	25 MPH OR LESS

(1) ALL SPACING MAY BE ADJUSTED TO ACCOMMODATE INTERSECTIONS AND DRIVEWAYS.
 (2) THIS SPACING MAY BE REDUCED IN URBAN AREAS TO FIT ROADWAY CONDITIONS.

CHANNELIZATION DEVICE SPACING (FEET)	
MPH	TAPER
35/45	30
25/30	20

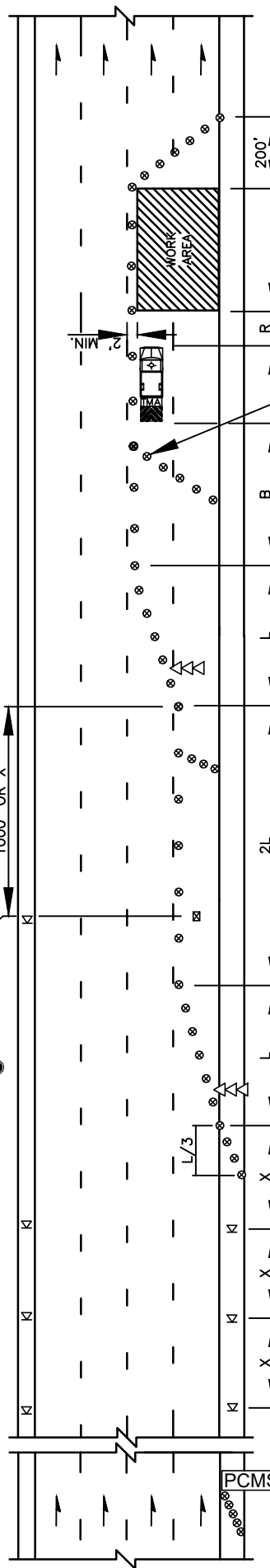
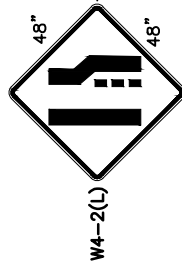
PCMS	
1	2
2 LANE CLOSED AHEAD	WATCH FOR SLOW TRAFFIC
2.0 SEC	2.0 SEC

FIELD LOCATE 1 MILE ± IN ADVANCE OF LANE CLOSURE SIGNING.

MINIMUM LANE CLOSURE TAPER LENGTH = L (FEET)	
LANE WIDTH (FEET)	POSTED SPEED (MPH)
	25 30 35 40 45
10	105 150 205 270 450
11	115 165 225 295 495
12	125 180 245 320 540

MINIMUM SHOULDER TAPER LENGTH = L/3 (FEET)	
SHOULDER WIDTH (FEET)	POSTED SPEED (MPH)
	25 30 35 40 45
8	40 40 60 90 120
10	40 60 90 90 150

USE A MINIMUM 3 DEVICES TAPER FOR SHOULDER LESS THEN 8'.



- LEGEND**
- TEMPORARY SIGN LOCATION
 - ⊗ TRAFFIC SAFETY DRUM
 - ▷ SEQUENTIAL ARROW SIGN
 - ▩ TRANSPORTABLE ATTENUATOR
 - PCMS PORTABLE CHANGEABLE MESSAGE SIGN
- NOTES:**
- SEE SPECIAL PROVISIONS FOR WORK HOUR RESTRICTIONS.
 - EXTEND DEVICE TAPER AT L/3 ACROSS SHOULDER.
 - DEVICES SHALL NOT ENCR OACH INTO THE ADJACENT LANE.
 - USE TRANSVERSE DEVICES IN CLOSED LANE EVERY 1000' (FT) (RECOMMENDED).
 - DEVICE SPACING FOR THE DOWNSTREAM TAPER SHALL BE 20' (FT).
 - ALL SIGNS ARE BLACK ON ORANGE.

REV	NO.	DATE	BY	APPR	DESCRIPTION
1	3/16	RAW	CJC		PUBLIC WORKS - STREETS AND TRANSPORTATION
2	9/21	RAW	CJC		

APPROVED BY: *[Signature]* TRAFFIC ENGINEER MANAGER 9/17/2021
 APPROVED DATE:

CITY OF Vancouver WASHINGTON

TRAFFIC CONTROL STANDARD PLAN
 DOUBLE-LANE CLOSURE FOR MULTI-LANE ROADWAYS

STANDARD PLAN NUMBER
 TC4