

MINIMUM SHOULDER TAPER LENGTH = L/3 (FEET)		
SHOULDER WIDTH (FEET)	POSTED SPEED (MPH)	
	8	25
10	40	40
	60	90
	90	90

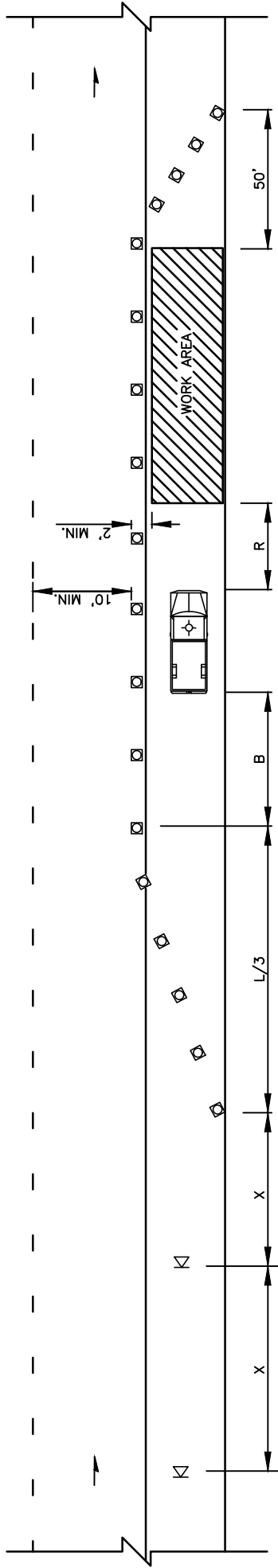
USE A MINIMUM 3 DEVICES TAPER FOR SHOULDER LESS THEN 8'.

CHANNELIZATION DEVICE SPACING (FEET)		
MPH	TAPER	TANGENT
35/40	30	60
25/30	20	40

SIGN SPACING = X (1)		
PRINCIPAL, MINOR OR COLLECTOR ARTERIALS	35/40 MPH	350'±
INDUSTRIAL AND LOCAL ACCESS ROADWAYS	25/30 MPH	200'± (2)
INDUSTRIAL AND LOCAL ACCESS ROADWAYS	25 MPH OR LESS	100'± (2)

(1) ALL SPACING MAY BE ADJUSTED TO ACCOMMODATE INTERSECTIONS AND DRIVEWAYS.
 (2) THIS SPACING MAY BE REDUCED IN URBAN AREAS TO FIT ROADWAY CONDITIONS.

BUFFER DATA		
LONGITUDINAL BUFFER SPACE = B		
SPEED (MPH)	25	30
LENGTH (FEET)	155	200
BUFFER VEHICLE ROLL AHEAD DISTANCE = R		
TRANSPORTABLE ATTENUATOR		
MINIMUM HOST VEHICLE WEIGHT 15,000 LBS. THE MAXIMUM WEIGHT SHALL BE 30 FEET MIN. TO 100 FEET MAX.		
PROTECTIVE VEHICLE		
MAY BE A WORK VEHICLE STRATEGICALLY LOCATED TO SHIELD THE WORK AREA.		
NO SPECIFIED DISTANCE REQUIRED		



NOTES:

1. DEVICE SPACING FOR THE DOWNSTREAM TAPER SHALL BE 20' (FT).
2. ALL SIGNS ARE BLACK ON ORANGE.

REV. NO.	DATE	BY	APPR.	RAW	CJC	RAW	CJC
1	5/16	RAW	CJC				
2	9/21	RAW	CJC				

PUBLIC WORKS – STREETS AND TRANSPORTATION

APPROVED BY: *[Signature]*
 TRAFFIC ENGINEER MANAGER
 9/17/2021

APPROVED DATE:

STANDARD PLAN NUMBER
TC5

TRAFFIC CONTROL STANDARD PLAN
 SHOULDER CLOSURE LOW
 SPEED (40 MPH OR LESS)



- LEGEND
- ⊓ TEMPORARY SIGN LOCATION
 - CHANNELIZING DEVICES
 - ⊓ PROTECTIVE VEHICLE
- W20-1
 W21-5