

**MINIMUM SHOULDER TAPER LENGTH = L/3 (FEET)**

SHOULDER WIDTH (FEET)	POSTED SPEED (MPH)				
	25	30	35	40	45
8	-	-	-	-	120
10	-	-	-	-	150

USE A MINIMUM 3 DEVICES TAPER FOR SHOULDER LESS THEN 8'.

**SIGN SPACING = X (1)**

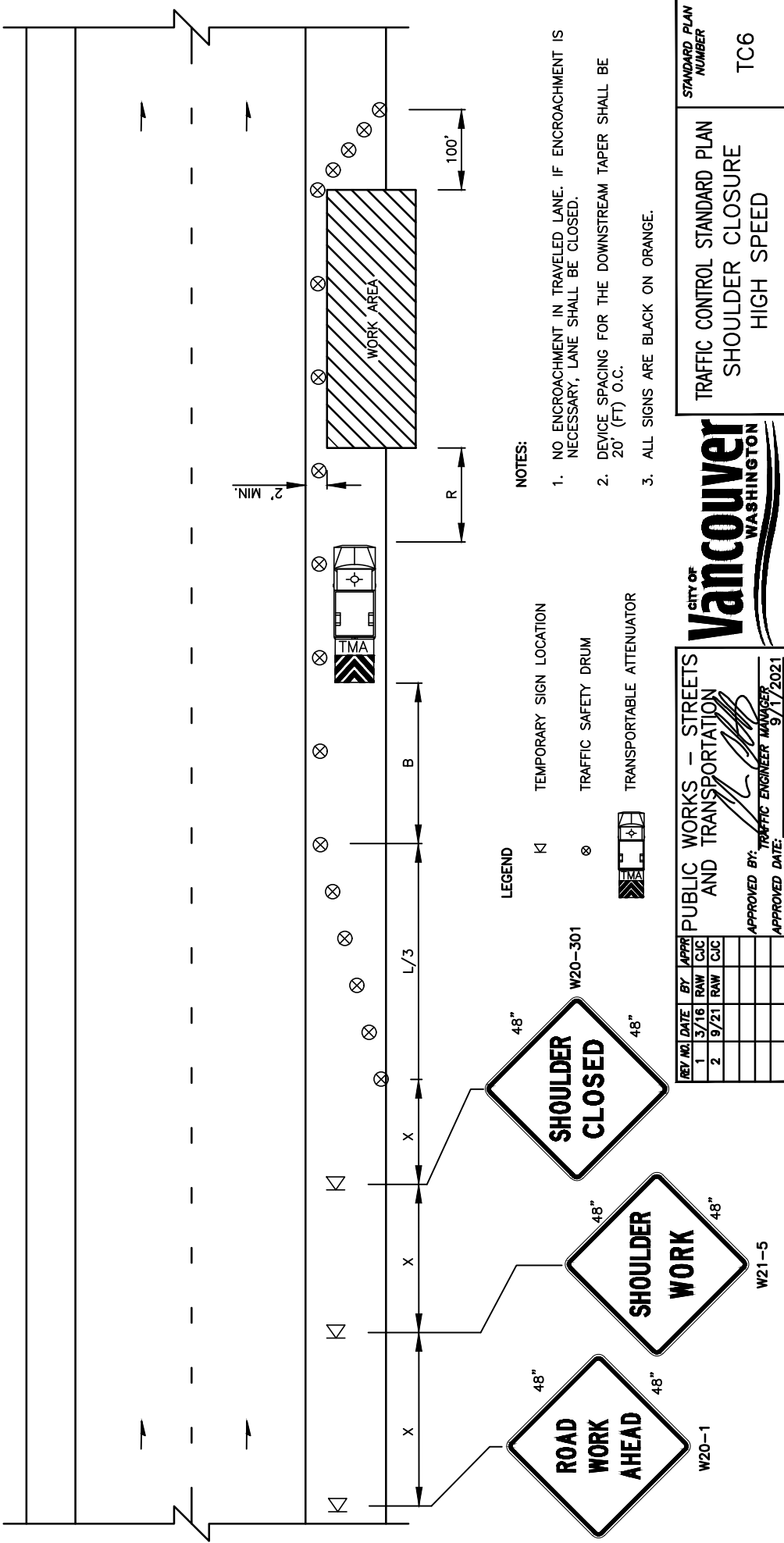
PRINCIPAL ARTERIALS	45 MPH	500'±
(1) ALL SPACING MAY BE ADJUSTED TO ACCOMMODATE INTERSECTIONS AND DRIVEWAYS.		

**CHANNELIZATION DEVICE SPACING (FEET)**

MPH	TAPER	TANGENT
45	30	60

**BUFFER DATA**

LONGITUDINAL BUFFER SPACE = B					
SPEED (MPH)	25	30	35	40	45
LENGTH (FEET)	-	-	-	-	360
BUFFER VEHICLE ROLL AHEAD DISTANCE = R					
TRANSPORTABLE ATTENUATOR					
MINIMUM HOST VEHICLE WEIGHT 15,000 TO 30 FEET MIN. LBS. THE MAXIMUM WEIGHT SHALL BE 100 FEET MAX.					
IN ACCORDANCE WITH THE MANUFACTURERS RECOMMENDATION.					
PROTECTIVE VEHICLE					
MAY BE A WORK VEHICLE STRATEGICALLY LOCATED TO SHIELD THE WORK AREA.					
NO SPECIFIED DISTANCE REQUIRED					



- NOTES:**
- NO ENCROACHMENT IN TRAVELED LANE. IF ENCROACHMENT IS NECESSARY, LANE SHALL BE CLOSED.
  - DEVICE SPACING FOR THE DOWNSTREAM TAPER SHALL BE 20' (FT) O.C.
  - ALL SIGNS ARE BLACK ON ORANGE.

- LEGEND**
- ⊠ TEMPORARY SIGN LOCATION
  - ⊗ TRAFFIC SAFETY DRUM
  - ⊞ TRANSPORTABLE ATTENUATOR

REV. NO.	DATE	BY	APPR.	RAW	CJC	RAW	CJC
1	5/16	RAW	CJC				
2	9/21	RAW	CJC				

**PUBLIC WORKS - STREETS AND TRANSPORTATION**

APPROVED BY: *[Signature]* TRAFFIC ENGINEER MANAGER  
 APPROVED DATE: 9/1/2021

STANDARD PLAN NUMBER  
**TC6**

TRAFFIC CONTROL STANDARD PLAN  
 SHOULDER CLOSURE  
 HIGH SPEED

