

BUFFER DATA			
LONGITUDINAL BUFFER SPACE = B	SPEED (MPH)		
25	30	35	40
155	200	250	305
BUFFER VEHICLE ROLL AHEAD DISTANCE = R			
30 FEET MIN. TO 100 FEET MAX.			
TRANSPORTABLE ATTENUATOR			
NO SPECIFIED DISTANCE REQUIRED			
PROTECTIVE VEHICLE			
MAY BE A WORK VEHICLE STRATEGICALLY LOCATED TO SHIELD THE WORK AREA.			

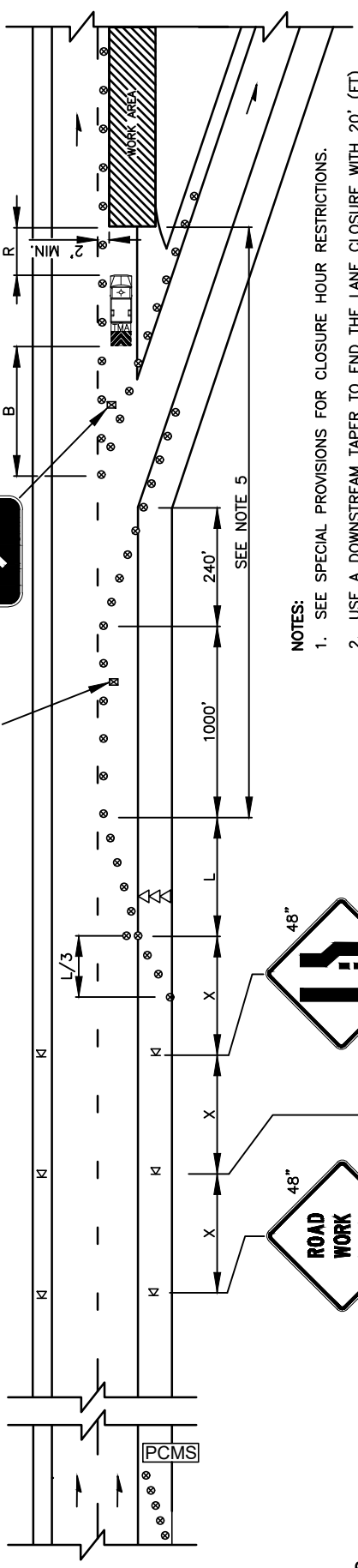
SIGN SPACING = X (1)			
PRINCIPAL ARTERIALS	45 MPH	500'±	
PRINCIPAL, MINOR OR COLLECTOR ARTERIALS	35/40 MPH	350'±	
PRINCIPAL, MINOR, COLLECTOR ARTERIALS, INDUSTRIAL AND LOCAL ACCESS ROADWAYS	25/30 MPH	200'± (2)	
INDUSTRIAL AND LOCAL ACCESS ROADWAYS	25 MPH OR LESS	100'± (2)	
(1) ALL SPACING MAY BE ADJUSTED TO ACCOMMODATE INTERSECTIONS AND DRIVEWAYS.			
(2) THIS SPACING MAY BE REDUCED IN URBAN AREAS TO FIT ROADWAY CONDITIONS.			

CHANNELIZATION DEVICE SPACING (FEET)			
MPH	TAPER	TANGENT	
35/45	30	60	
25/30	20	40	

PCMS	
1	2
RIGHT LANE CLOSURE	
2.0 SEC	2.0 SEC
FIELD LOCATE 1 MILE ± IN ADVANCE OF LANE CLOSURE SIGNING.	

MINIMUM LANE CLOSURE TAPER LENGTH = L (FEET)			
LANE WIDTH (FEET)	POSTED SPEED (MPH)		
	25	30	35
10	105	150	205
11	115	165	225
12	125	180	245
USE A MINIMUM 3 DEVICES TAPER FOR SHOULDER LESS THEN 8'.			

MINIMUM SHOULDER TAPER LENGTH = L/3 (FEET)			
SHOULDER WIDTH (FEET)	POSTED SPEED (MPH)		
	25	30	35
8	40	40	60
10	40	60	90
USE A MINIMUM 3 DEVICES TAPER FOR SHOULDER LESS THEN 8'.			



- NOTES:**
- SEE SPECIAL PROVISIONS FOR CLOSURE HOUR RESTRICTIONS.
 - USE A DOWNSTREAM TAPER TO END THE LANE CLOSURE WITH 20' (FT) DEVICE SPACING.
 - DEVICES SHALL NOT ENCRUCH INTO ADJACENT LANES.
 - USE TRANSVERSE DEVICES IN CLOSED LANES EVERY 1000' (FT)± (RECOMMENDED).
 - SEE SHEET TCXX FOR A SHORT TERM OFF-RAMP CLOSURE WHEN THE WORK AREA LOCATION RESTRICTS RAMP ACCESS.
 - ALL SIGNS ARE BLACK ON ORANGE UNLESS OTHERWISE DESIGNATED.

LEGEND

- KI TEMPORARY SIGN LOCATION
- ⊗ TRAFFIC SAFETY DRUM
- ▷▷ SEQUENTIAL ARROW SIGN
- TRANSPORTABLE ATTENUATOR
- PCMS PORTABLE CHANGEABLE MESSAGE SIGN
- ⊗ TEMPORARY SIGN LOCATION (5' MOUNTING HEIGHT)

REV NO.	DATE	BY	APPR	STREETS AND TRANSPORTATION
1	5/16	RAW	CJC	
2	9/21	RAW	CJC	
APPROVED BY: <i>[Signature]</i>				TRAFFIC ENGINEER MANAGER
APPROVED DATE: 9/1/2021				

CITY OF Vancouver WASHINGTON

TRAFFIC CONTROL STANDARD PLAN
 TEMPORARY OFF-RAMP FOR MULTI-LANE ROADWAYS

STANDARD PLAN NUMBER
 TC7