

BUFFER DATA					
LONGITUDINAL BUFFER SPACE = B	25	30	35	40	45
SPEED (MPH)	25	30	35	40	45
LENGTH (FEET)	155	200	250	305	360
BUFFER VEHICLE ROLL AHEAD DISTANCE = R					
TRANSPORTABLE ATTENUATOR	30 FEET MIN. TO 100 FEET MAX.				
MINIMUM HOST VEHICLE WEIGHT 15,000 LBS. THE MAXIMUM WEIGHT SHALL BE IN ACCORDANCE WITH THE MANUFACTURERS RECOMMENDATION.					
PROTECTIVE VEHICLE	NO SPECIFIED DISTANCE REQUIRED				
MAY BE A WORK VEHICLE STRATEGICALLY LOCATED TO SHIELD THE WORK AREA.					

**SIGN SPACING = X (1)**

PRINCIPAL ARTERIALS	45 MPH	500' ±
PRINCIPAL, MINOR OR COLLECTOR ARTERIALS	35/40 MPH	350' ±
PRINCIPAL, MINOR, COLLECTOR ARTERIALS, INDUSTRIAL AND LOCAL ACCESS ROADWAYS	25/30 MPH	200' ± (2)
INDUSTRIAL AND LOCAL ACCESS ROADWAYS	25 MPH OR LESS	100' ± (2)

(1) ALL SPACING MAY BE ADJUSTED TO ACCOMMODATE INTERSECTIONS AND DRIVEWAYS.  
 (2) THIS SPACING MAY BE REDUCED IN URBAN AREAS TO FIT ROADWAY CONDITIONS.

**CHANNELIZATION DEVICE SPACING (FEET)**

MPH	TAPER	TANGENT
35/45	30	60
25/30	20	40

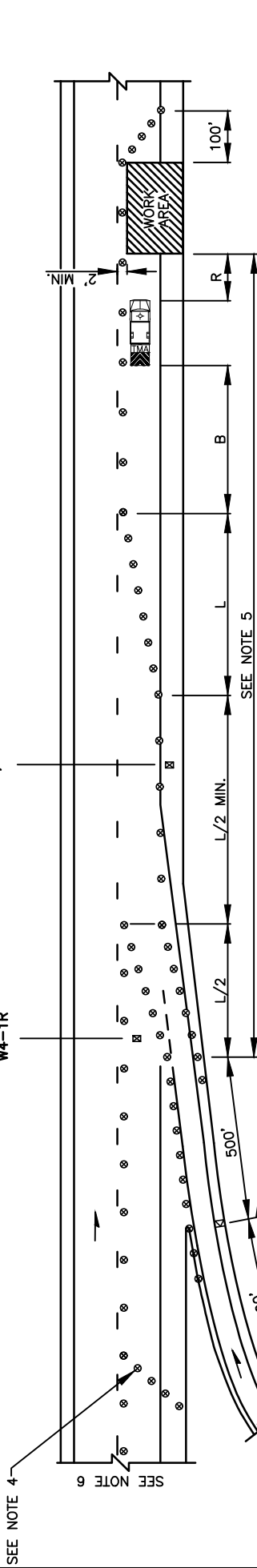
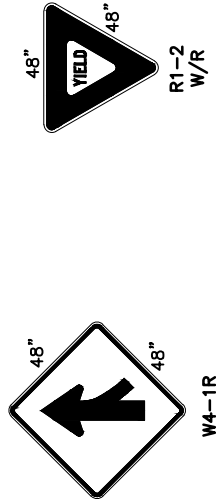
**MINIMUM LANE CLOSURE TAPER LENGTH = L (FEET)**

LANE WIDTH (FEET)	POSTED SPEED (MPH)				
	25	30	35	40	45
10	105	150	205	270	450
11	115	165	225	295	495
12	125	180	245	320	540

**MINIMUM SHOULDER TAPER LENGTH = L/3 (FEET)**

SHOULDER WIDTH (FEET)	POSTED SPEED (MPH)				
	25	30	35	40	45
8	40	40	60	90	120
10	40	40	60	90	150

USE A MINIMUM 3 DEVICES TAPER FOR SHOULDER LESS THEN 8'.



**NOTES:**

- SEE SPECIAL PROVISIONS FOR CLOSURE HOUR RESTRICTIONS.
- USE A DOWNSTREAM TAPER TO END THE LANE CLOSURE WITH A 20' (FT) DEVICE SPACING.
- DEVICES SHALL NOT ENCR OACH INTO ADJACENT LANES.
- USE TRANSVERSE DEVICES IN CLOSED LANES EVERY 1000' ± (RECOMMENDED).
- SEE SHEET TCXX FOR A SHORT TERM ON-RAMP CLOSURE WHEN THE WORK AREA LOCATION RESTRICTS RAMP ACCESS.
- SEE SHEET TC3 OR TC7 FOR RIGHT LANE CLOSURE.
- ALL SIGNS ARE BLACK ON ORANGE UNLESS OTHERWISE DESIGNATE.

- LEGEND**
- K1 TEMPORARY SIGN LOCATION
  - ⊗ TRAFFIC SAFETY DRUM
  - ▷▷ SEQUENTIAL ARROW SIGN
  - ⊠ TRANSPORTABLE ATTENUATOR
  - ⊠ TEMPORARY SIGN LOCATION (5' MOUNTING HEIGHT)

REV	NO.	DATE	BY	APPR	STREETS - PUBLIC WORKS AND TRANSPORTATION
1		5/16	RAW	CJC	
2		9/21	RAW	CJC	

APPROVED BY: *[Signature]* TRAFFIC ENGINEER MANAGER  
 APPROVED DATE: 9/17/2021

**CITY OF Vancouver WASHINGTON**

TRAFFIC CONTROL STANDARD PLAN  
 TEMPORARY ON-RAMP FOR MULTI-LANE ROADWAYS

STANDARD PLAN NUMBER  
 TC9