

Solid Waste Access & Design Standards

CITY OF VANCOUVER

Vancouver Solid Waste

Phone: 360-487-7160 | Email: solidwaste@cityofvancouver.us

Updated: Jan. 2023

RECEPTACLE FOOTPRINTS

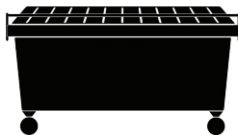
Show all receptacles on plans. Each footprint noted below includes space for maneuvering in and around the receptacle, opening lids, grabbing handles, etc.

Receptacle	Footprint Length	Footprint Width	Material Stream
Cart 32, 64, 95 gallon	4 feet (4')	4 feet (4')	Garbage and Mixed Recycling: 32, 64 or 95 gallon Glass: 64 gallon Organics (Yard Debris + Food Waste): 20, 32, 64 or 96 gallon Commercial Food Waste: 64 gallon
Wheeled Container 1, 1.5, 2 cubic yard 3, 4 cubic yard	8 feet 6 inches (8.5')	5 feet (5')	Garbage Mixed Recycling Cardboard
Stationary Container 6, 8 cubic yard	8 feet 6 inches (8.5')	8 feet (8')	Garbage Mixed Recycling Cardboard
Detachable Compacted Container 2, 3, 4 cubic yard	Variable based on compactor make/model		Garbage (compacted recycling is not compatible with the Vancouver system)
Drop Box 10, 20, 30, 40 cubic yard	12 feet (12')	24 feet (24')	Garbage Mixed Recycling Cardboard
Stationary Compactor	Variable based on compactor model. Requires a concrete pad at least 14 feet wide and 25 feet long and specific electrical supply.		Garbage

CART



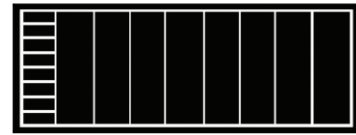
WHEELED CONTAINER



STATIONARY CONTAINER



DROP BOX/ COMPACTOR



Cart: A Contractor-provided wheeled Receptacle with attached lid less than one cubic yard in capacity suitable for the collection, storage and Curbside placement of Garbage, Recyclables or Organics. Carts shall be rodent and insect resistant.

Container: A watertight metal or plastic Receptacle equipped with a tight-fitting cover, capable of being mechanically unloaded into the Contractor's collection vehicles which is not less than one cubic yard in capacity.

- Wheeled Container: Max size is 4 cubic yards, though smaller may be required based on site design, surface, and conditions.
- Stationary Container: Does not have wheels, requires direct approach by collection truck

Drop-box: An all-metal loose material or compactor Receptacle with ten (10) cubic yards or more capacity that is mechanically loaded onto a specialized collection vehicle for transport to a processing or disposal site.

COLLECTOR ACCESS

Cart, Wheeled Container: Can be rolled by the collection driver or building staff to the servicing location, i.e. to the front of the truck or within reach of automated arms

Detachable Compacted Container: Can be rolled by the collection driver or building staff to the servicing location. All compacted containers greater than 2 yards must be moved with site-provided mechanized equipment such as a motorized pushcart.

Stationary Container: Provide a 55' clear approach with a minimum width of 12' for collection vehicles, i.e., straight path with no obstacles, obstructions to line of sight or truck in accessing a container.

Drop Box and stationary compactors: Provide a 80' direct approach with a minimum width of 12' for collection vehicles i.e., straight path with no obstacles, obstructions to line of sight or truck in accessing or placing a

Site Circulation: All site designs must provide adequate and safe circulation and turnaround designs and shall meet the requirements of [VMC 11.80.070](#) and the Transportation Standard Details and be feasible using City provided solid waste truck turning modelling templates and truck specifications.

Collection vehicles must be able to service each receptacle without backing into public streets and with minimal on-site backing.

Download turning templates for collection vehicles are available for users to model turning using either AutoTurn software or Autodesk Vehicle Tracking software:

www.cityofvancouver.us/publicworks/page/truck-turning-radius

Overhead Clearance/ Cover heights: (Overhead clearance must be completely unobstructed)

For collection vehicles to drive under awnings, overhangs etc.: 18 feet minimum

For retrieving stationary containers from covered enclosures: 16 feet minimum

For retrieving wheeled containers from covered enclosures: 10 feet minimum

For retrieving stationary compactors and drop boxes, height dependent on site design and direct approach.

For collection vehicles to service containers in place: 24 feet minimum

Security Gated Site Access: 12 feet minimum fully open width

Enclosure or Solid Waste Room Service Gates or Doors:

Enclosure gates and solid waste room doors must have a method of securement in the open and closed positions. Plans must show drilled holes for securing cane bolts, anchor pins or other mechanism into the ground or onto the floor.

Enclosure gate hinges should be on the outside of the post so that the gate opens to the fullest extent possible (at least 90 degrees, though greater than 90 degrees is preferred) and the minimum width is maintained.

Minimum Service Gate or Door widths:

Wheeled containers: At least 6' minimum width, 8-10' preferred

Stationary container: At least 12' minimum width

Enclosure Orientation:

Enclosure service gates should open in the direction towards the area with greatest direct approach access for collection vehicles.