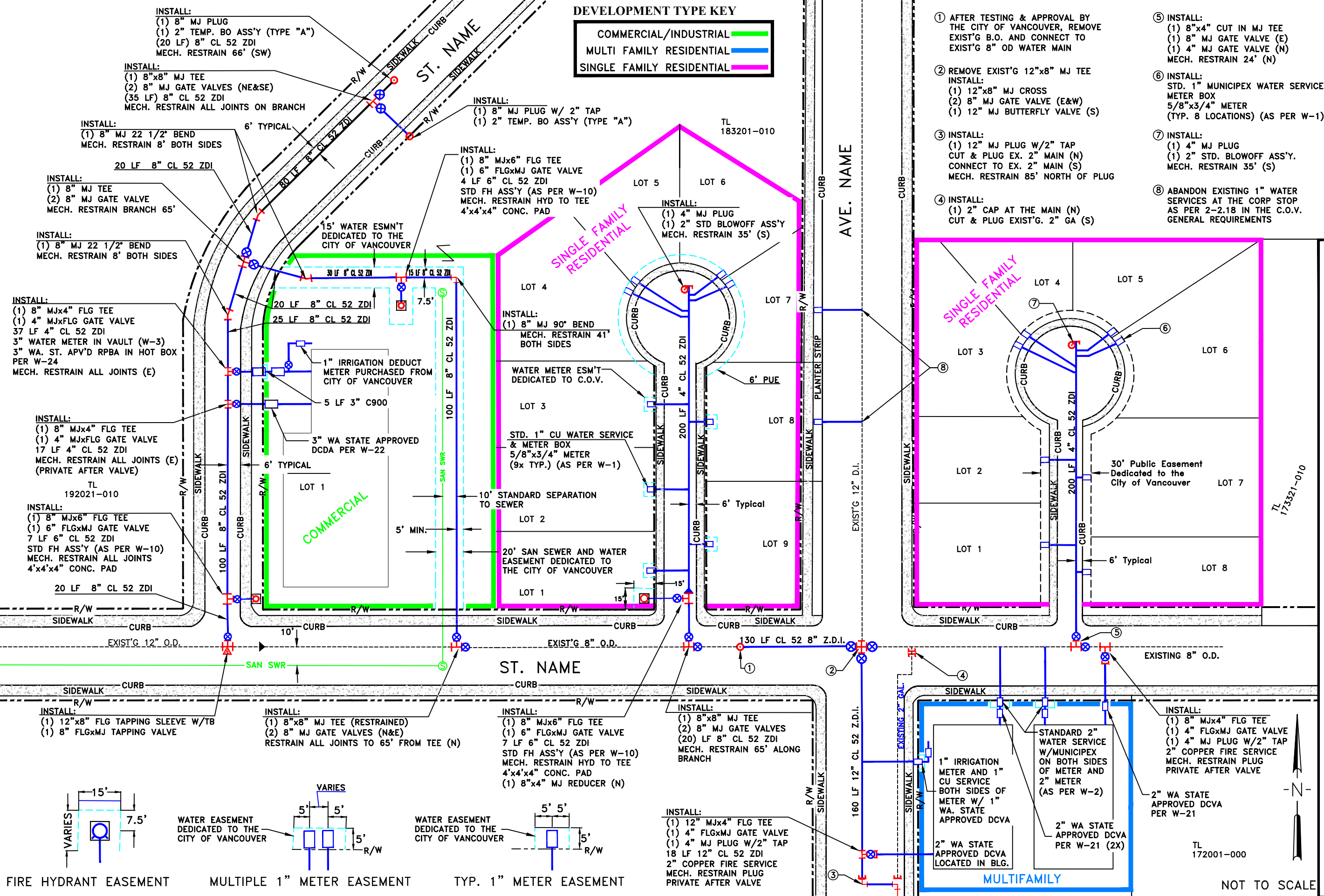


DEVELOPMENT TYPE KEY



- ① AFTER TESTING & APPROVAL BY THE CITY OF VANCOUVER, REMOVE EXIST'G B.O. AND CONNECT TO EXIST'G 8" OD WATER MAIN
- ② REMOVE EXIST'G 12"x8" MJ TEE
 INSTALL:
 (1) 12"x8" MJ CROSS
 (2) 8" MJ GATE VALVE (E&W)
 (1) 12" MJ BUTTERFLY VALVE (S)
- ③ INSTALL:
 (1) 12" MJ PLUG W/2" TAP CUT & PLUG EX. 2" MAIN (N)
 (1) 12" MJ BUTTERFLY VALVE (S)
 MECH. RESTRAIN 85' NORTH OF PLUG
- ④ INSTALL:
 (1) 2" CAP AT THE MAIN (N)
 (1) 2" STD. BLOWOFF ASS'Y. MECH. RESTRAIN 35' (S)
- ⑤ INSTALL:
 (1) 8"x4" CUT IN MJ TEE
 (1) 8" MJ GATE VALVE (E)
 (1) 4" MJ GATE VALVE (N)
 MECH. RESTRAIN 24' (N)
- ⑥ INSTALL:
 STD. 1" MUNICIPEX WATER SERVICE & METER BOX
 5/8"x3/4" METER
 (TYP. 8 LOCATIONS) (AS PER W-1)
- ⑦ INSTALL:
 (1) 4" MJ PLUG
 (1) 2" STD. BLOWOFF ASS'Y.
 MECH. RESTRAIN 35' (S)
- ⑧ ABANDON EXISTING 1" WATER SERVICES AT THE CORP STOP AS PER 2-2.18 IN THE C.O.V. GENERAL REQUIREMENTS



INSTALL:
 (1) 12"x8" FLG TAPPING SLEEVE W/TB
 (1) 8" FLGxMJ TAPPING VALVE

INSTALL:
 (1) 8"x8" MJ TEE (RESTRAINED)
 (2) 8" MJ GATE VALVES (N&E)
 RESTRAIN ALL JOINTS TO 65' FROM TEE (N)

INSTALL:
 (1) 8" MJx6" FLG TEE
 (1) 6" FLGxMJ GATE VALVE
 7 LF 6" CL 52 ZDI
 STD FH ASS'Y (AS PER W-10)
 MECH. RESTRAIN HYD TO TEE
 4'x4'x4" CONC. PAD
 (1) 8"x4" MJ REDUCER (N)

INSTALL:
 (1) 8"x8" MJ TEE
 (2) 8" MJ GATE VALVES
 (20) LF 8" CL 52 ZDI
 MECH. RESTRAIN 65' ALONG BRANCH

INSTALL:
 (1) 12" MJx4" FLG TEE
 (1) 4" FLGxMJ GATE VALVE
 (1) 4" MJ PLUG W/2" TAP
 18 LF 12" CL 52 ZDI
 2" COPPER FIRE SERVICE
 MECH. RESTRAIN PLUG
 PRIVATE AFTER VALVE

INSTALL:
 (1) 8" MJx4" FLG TEE
 (1) 4" FLGxMJ GATE VALVE
 (1) 4" MJ PLUG W/2" TAP
 2" COPPER FIRE SERVICE
 MECH. RESTRAIN PLUG
 PRIVATE AFTER VALVE

TL 172001-000

City of Vancouver Example Drawing 2023

NOT TO SCALE