



Fourth Plain Forward Public Art Program

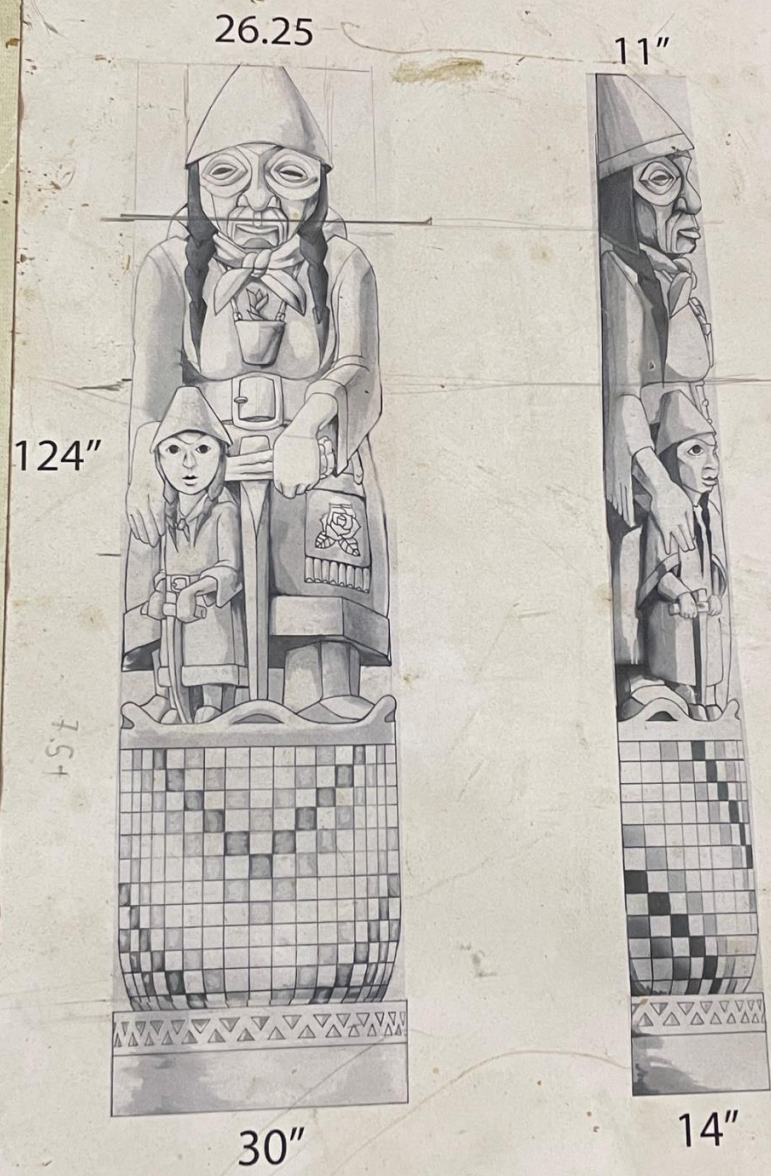
Mother Camas

Artist: Toma Villa

Art Director: Redstone Serna

Community Development Manager: Sheila Davis

Executive Director: Paul Burgess

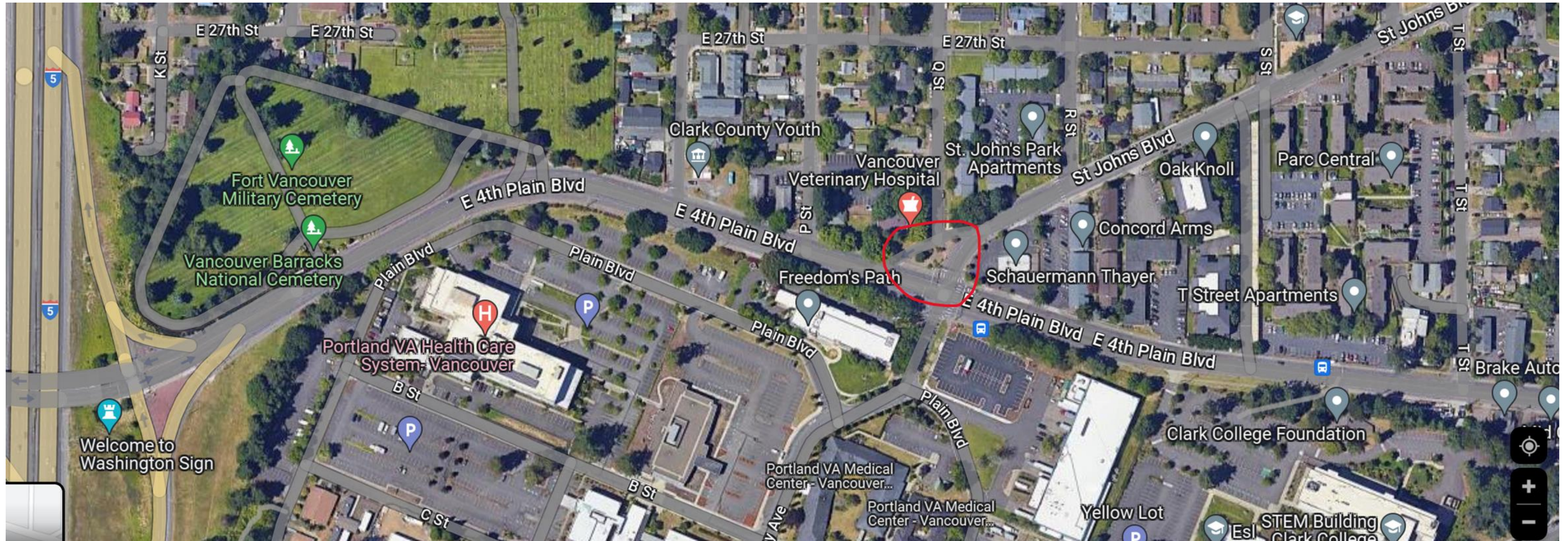






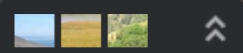
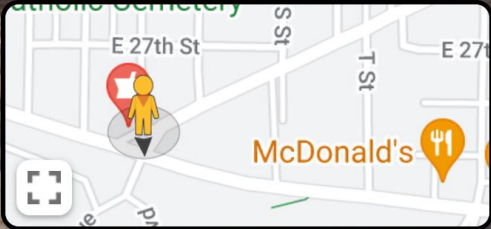






☰ Search Google Maps 🔍 📍

2501 Q St 📍 ⋮ ✕
 Vancouver, Washington
 🌐 Google Street View
 Nov 2022 [See more dates](#)



Google

Image capture: Nov 2022 © 2022 Google United States Terms Privacy Report a problem

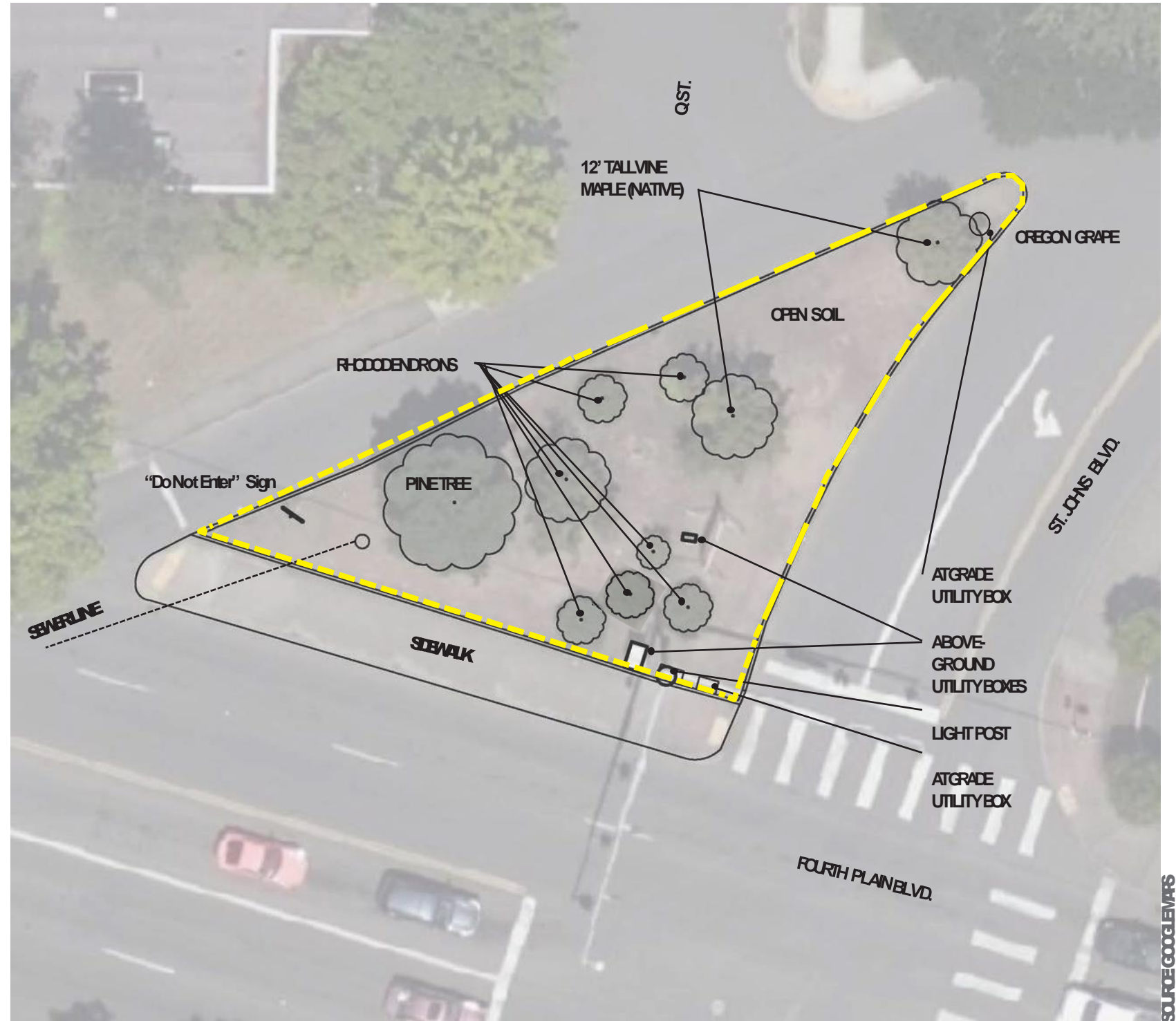
SITE LOCATION MAP:



PROJECT BACKGROUND & GOALS:

- THE PROJECT IS LOCATED AT THE INTERSECTION OF ST. JOHN'S BLVD. AND E. FOURTH PLAIN BLVD.
- THE PROJECT SITE IS A TRAFFIC ISLAND NORTH OF FOURTH PLAIN BLVD. AND HAS SEVERAL PLANTS AND OPEN DIRT, APPROXIMATELY 3,640 SQUARE FEET
- THE GOAL OF THE PROJECT IS TO REVITALIZE THE TRAFFIC ISLAND WITH A NEW CEDAR SCULPTURE AND REVITALIZED LANDSCAPE. THE SCULPTURE IS IN THE LIKENESS OF MOTHER CAMAS BY A REGIONAL INDIGENOUS ARTIST RODOLFO REDSTONE SERNA.
- THE LANDSCAPE PLANTINGS NEED TO TAKE INTO ACCOUNT SEVERAL FACTORS, INCLUDING LOW MAINTENANCE, EASY TO ESTABLISH WITH THE SITE SPECIFIC CONDITIONS (SUNNY, DRY, ETC.), NATIVE TO THE EXTENT POSSIBLE AND POLLINATOR FRIENDLY, WHILE AESTHETICALLY SUPPORTING THE ART DESIGN AND MAINTAINING APPROPRIATE VISUAL SAFETY FOR TRAFFIC (CARS, CYCLISTS AND PEDESTRIANS)

EXISTING CONDITIONS:



EXISTING SHRUBS ARE OLDER, MISSHAPEN AND OF VARIOUS HEALTH STATUS



THERE ARE TIRE TRACKS ACROSS THE ISLAND FROM ST. JOHN'S TO Q ST.

LOTS OF BARE & COMPACTED SOILS



MAINTAIN SAFE VISUALS FOR TRAFFIC MOVEMENTS



LOTS OF OPEN AREAS FOR TEMPORARY SIGNS, LIKE POLITICAL SEASON SIGNS & SERVICE CONTRACTORS



VARIOUS REMNANT LANDSCAPE PLANTS INCLUDING PINE TREE, RHODODENDRONS, OREGON GRAPE AND VINEMAPLES



EXISTING UTILITY BOXES AND TRAFFIC POST, AS WELL AS "SCREENING" LANDSCAPE

IMAGE SOURCES: GOOGLE MAPS

PROPOSED LANDSCAPE UPDATES - EXISTING CONDITIONS FOURTH PLAIN FORWARD & ST. JOHN'S - MOTHER CAMAS

45.639420, -122.654385

V. May 2023

Plan prepared by:
Vancouver, WA

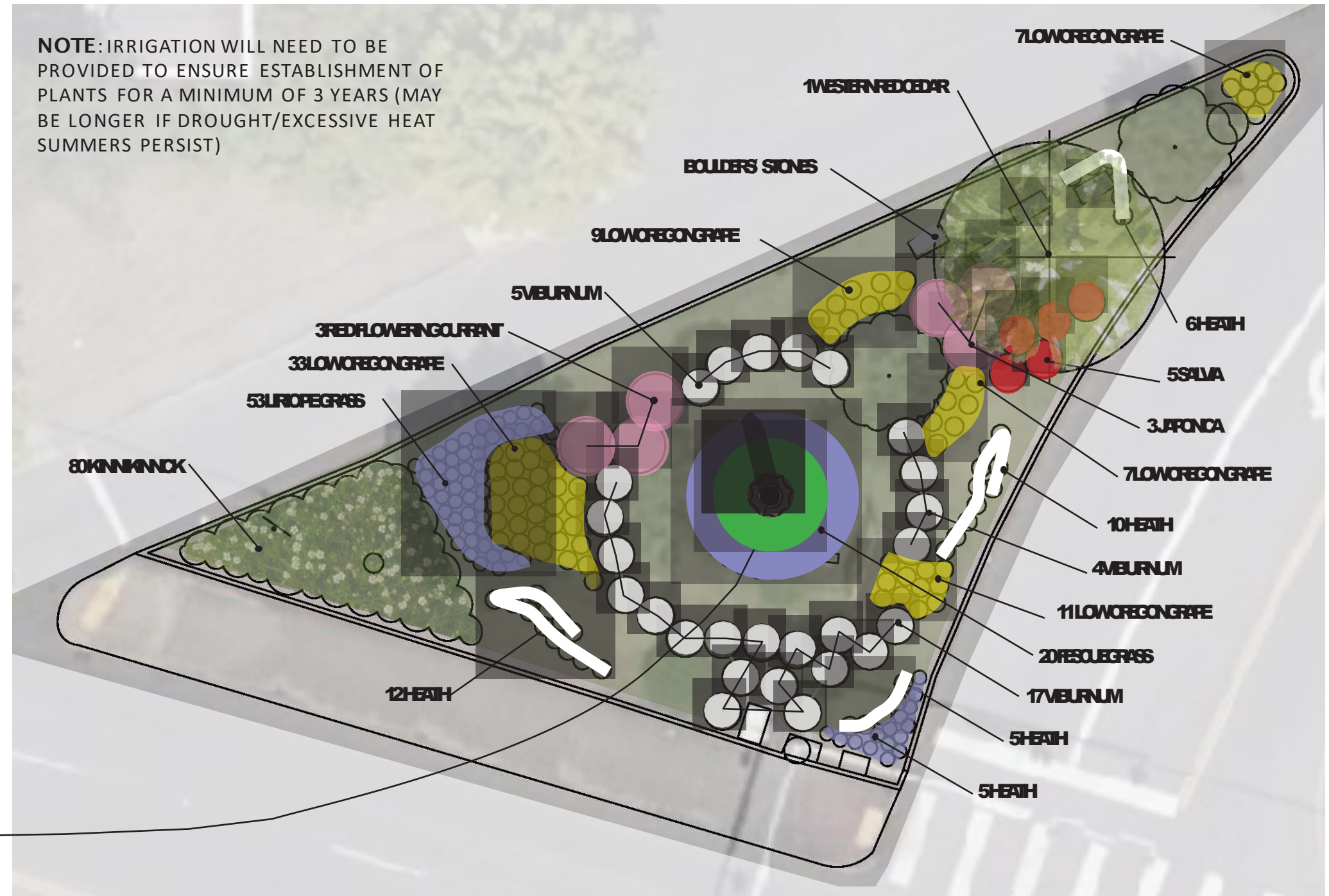


PLANTING GOALS:



- COMPLIMENT AND SUPPORT THE ART SCULPTURE, INCLUDING PLANTING GRASSES THAT BLOW IN THE BREEZE AND INTERSPERSE CAMAS FLOWERS THROUGHOUT
- MAINTAIN SAFE VIEWSHEDS FOR TRAFFIC (I.E. ST. JOHN'S SOUTHBOUND TO WEST BOUND FOURTH PLAIN)
- USE NATIVE SPECIES WHERE POSSIBLE
- USE PLANTS THAT SUPPORT POLLINATORS & EXTEND BLOOM TIME THROUGHOUT THE SEASONS
- DIVERSIFY THE BLOOM COLORS, SHAPES AND TEXTURES
- ENSURE THAT SELECTED PLANTS CAN TOLERATE DRY, SUNNY CONDITIONS ONCE ESTABLISHED
- SELECT SPECIES THAT MAY BE READILY AVAILABLE AT LOCAL NURSERIES FOR PLANTING FALL 2023
- PREPARE SOIL TO LOOSEN, ADD SOIL AMENDMENTS AND ADD 3" OF FINE SHREDDED MULCH BETWEEN ALL PLANTS TO MAINTAIN MOISTURE AND REDUCE WEED LOAD
- ADD ROCKS/BOULDERS AS SHOWN TO MINIMIZE VEHICLES FROM CROSSING ILLEGALLY



MOTHER CAMAS CEDAR SCULPTURE ON CONCRETE FOOTING
 [By: Toma Villa, Rodolfo Serna]



NOTE: IRRIGATION WILL NEED TO BE PROVIDED TO ENSURE ESTABLISHMENT OF PLANTS FOR A MINIMUM OF 3 YEARS (MAY BE LONGER IF DROUGHT/EXCESSIVE HEAT SUMMERS PERSIST)

	COLORED CIRCLES	= "STRUCTURE" PLANT - HAS EVERGREEN OR BRANCHING THAT PROVIDES OVERWINTERING STRUCTURE
	SHADED GREEN	= PERENNIAL AND BULB PLANTINGS PLANTED IN MASSES IN BETWEEN "STRUCTURE" PLANT MASSES, PLANTS IN GROUPS OR 5 OR 7 OR 9

PHASE 1 - REQUIRED PLANTINGS

ID	NO.	SCIENTIFIC NAME	COMMON NAME	CONTAINER	HEIGHT	WIDTH	MONTHLY COLOR & BLOOM GUIDE												SUN/SHADE	POLLINATORS	NATIVE	NOTE
							J	F	M	A	M	J	J	A	S	O	N	D				
TREES / SHRUBS																						
THPL	1	THUJA PLICATA	WESTERN RED CEDAR	5 GAL.	50"	20"													○●	🦋	YES	Butterflies and moths
BULBS - PLANT A VARIETY THROUGHOUT GRASSES IN CLUSTERS OF 3-9																						
CAQU	30	CAMASSIA QUAMASH	CAMAS LILY	BULB	1.5'	8"													○●	🦋🐝	YES	Native bees (Apidae, Megachilidae), butterflies (blues)
GRASSES																						
FEID	20	FESTUCA IDAHOENSIS	IDAHO FESCUE	1 GAL.	1.5'	4'													○	🦋	YES	Butterflies (Skippers)
LISP	120	LIRIOPE SPICATA	CREEPING LIRIOPE GRASS	1 GAL.	12"	1.5'														🦋		Butterflies

PHASE 2 - ADDITIONAL PREFERRED PLANTINGS

ID	NO.	SCIENTIFIC NAME	COMMON NAME	CONTAINER	HEIGHT	WIDTH	MONTHLY BLOOM GUIDE												SUN/SHADE	POLLINATORS	NATIVE	NOTE
							J	F	M	A	M	J	J	A	S	O	N	D				
TREES / SHRUBS																						
ARUA	80	ARCTOSTAPHYLOS UVA-URSI	KINNIKINNICK	3 GAL.	8"	4'													○●	🦋	YES	Native bees (Andrenidae, Halictidae, Megachilidae), butterflies (brown elfin)
MANE	63	MAHONIA NERVOSA	LOW OREGON GRAPE	3 GAL.	2'	2'													○●	🦋🐝	YES	Butterflies (Painted lady)
PIJA	3	PIERIS JAPONICA	JAPONICA	3 GAL.	9'	6'													○●	🦋🐝		Native bees (Bombus)
RISA	3	RIBES SANGUINEUM	RED FLOWERING CURRANT	3 GAL.	8'	6'													○●	🐝🦋	YES	Native bees (Bombus)
VIDA	26	VIBURNUM 'DAVIDII'	VIBURNUM DAVIDII	3 GAL.	4'	4'													○●	🦋	YES	Butterflies
PERENNIALS																						
ERIC	33	ERICA SPP.	HEATH	1 GAL.	1'	2'													○●	🦋🐝		Native bees (Apidae, Megachilidae)
SAMI	5	SALVIA MICROPHYLLA 'HOT LIPS'	HOT LIPS SALVIA	1 GAL.	2.5'	4'													○●	🐝🦋		Native bees (Apidae), hummingbirds

PHASE 3 - ADDITIONAL POLLINATOR PLANTINGS

ID	NO.	SCIENTIFIC NAME	COMMON NAME	CONTAINER	HEIGHT	WIDTH	MONTHLY BLOOM GUIDE												SUN/SHADE	POLLINATORS	NATIVE	NOTE
							J	F	M	A	M	J	J	A	S	O	N	D				
PERENNIALS																						
ACMI	10	ACHILLEA MILLEFOLIUM	YARROW	1 GAL.	1.5'	3'													○	🦋🐝	YES	Northern Scurfy Quaker, Olive Arches, Yarrow Plume Moth, Smeathmann's Aethes Moth, White-lined Sphinx, Wavy-lined Emerald
ASSP	10	ASCLEPIAS SPECIOSA	SHOWY MILKWEED	1 GAL.	4'	1'													○●	🦋🐝	YES	Native bees (Apidae, Halictidae, Megachilidae), butterflies (Monarch)
ERLA	10	ERIOPHYLLUM LANATUM	OREGON SUNSHINE	1 GAL.	2'	2'													○●	🦋🐝	YES	Native Bees (Andrenidae, Halictidae, Megachilidae) butterflies (Painted lady)
FRVI	20	FRAGARIA VIRGINIANA	WILD STRAWBERRY	1 GAL.	6"	3'													○	🦋🐝	YES	Native bees (Andrenidae, Apidae, Colletidae, Halictidae, Megachilidae), butterflies (painted lady, swallowtail)
RUHI	10	RUDEBECKIA HIRTA	BLACK EYED-SUSAN	1 GAL.	2'	2'													○●	🦋🐝		Native bees (Andrenidae, Apidae, Halictidae, Megachilidae) flies, butterflies (painted lady, red admirals)
SEOR	10	SEDUM OREGANUM	OREGON STONECROP	1 GAL.	8"	1'													○	🦋🐝	YES	Native bees (Andrenidae, Apidae, Colletidae, Megachilidae), butterflies (Moss elfin)
SESP	10	SEDUM DIVERGENS	CASCADES STONECROP	1 GAL.	8"	1'													○	🦋	YES	Native bees (Andrenidae, Apidae, Colletidae, Megachilidae), butterflies (Moss elfin)

TREES / SHRUBS

PNW = NATIVE TO PACIFIC NORTHWEST REGION



WESTERN RED CEDAR



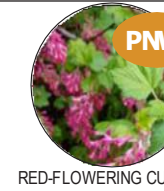
KINNIKINNICK



LOW OREGON GRAPE



JAPONICA



RED-FLOWERING CURRANT



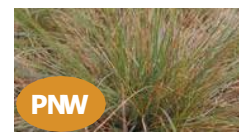
VIBURNUM DAVIDII

PHASE 3

PERENNIALS

PNW = NATIVE TO PACIFIC NORTHWEST REGION

PHASE 1



IDAHO FESCUE



LILY TURF LIRIOPE MUSCARI



CAMAS CAMASSIA QUAMASH

PHASE 2



HEATH ERICA SPP.



HOT LIPS SALVIA SALVIA MICROPHYLLA 'HOT

PHASE 3



YARROW ACHILLEA MILLEFOLIUM



SHOWY MILKWEED ASCLEPIAS SPECIOSA



OREGON SUNSHINE ERIOPHYLLUM LANATUM



WILD STRAWBERRY FRAGARIA VIRGINIANA



BLACK-EYED SUSANS RUDEBECKIA HIRTA



OREGON STONECROP SEDUM OREGANUM



CASCADES SEDUM SEDUM DIVERGENS