

**NOTE:**

- ① PVC INTERCONNECT CONDUIT WITH DETECTABLE MULE TAPE. (SEE PLANS AND SPECIFICATIONS).
- ② SEE STANDARD PLAN T20-38E AND STANDARD SPECIFICATIONS FOR FOUNDATION AND PAD DEPTH AND SIZE.
- ③ SEE STANDARD SPECIFICATIONS FOR DEPTH.
- ④ LOCATE SERVICE PEDESTAL SIDE ADJACENT TO CONTROLLER CABINET OR MOVE MORE THAN 20' AWAY. HANDLES SHALL POINT OUTWARD. METER OPENING SHALL FACE STREET.
- ⑤ MOUNTING BOLTS INSIDE CABINET. NUTS, BOLTS AND SCREWS WILL NOT BE VISIBLE FROM OUTSIDE OF ENCLOSURE.
- ⑥ SERVICE CABINET DOOR.

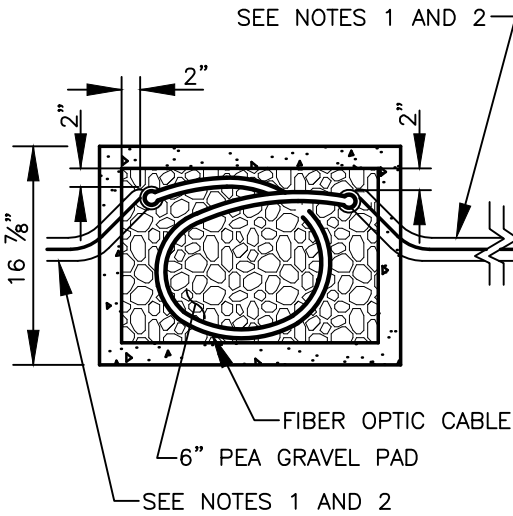
I:\CITYPPS\AUTOCAD\STD\_DETAILS\DRAWING\_FILES\T22-01

REV. NO.	DATE	BY	APPR	PUBLIC WORKS - STREETS AND TRANSPORTATION
1	3/06	RAW	AGE	
2	2/07	RAW	AGE	
3	8/08	RAW	AGE	
4	7/14	RAW	CJC	
5	4/18	RAW	CJC	
6	9/21	RAW	CJC	

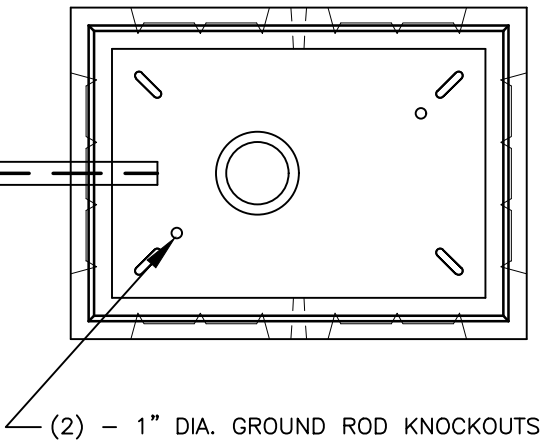
APPROVED BY: *[Signature]*  
 TRAFFIC ENGINEER MANAGER  
 APPROVED DATE: 9/1/2021



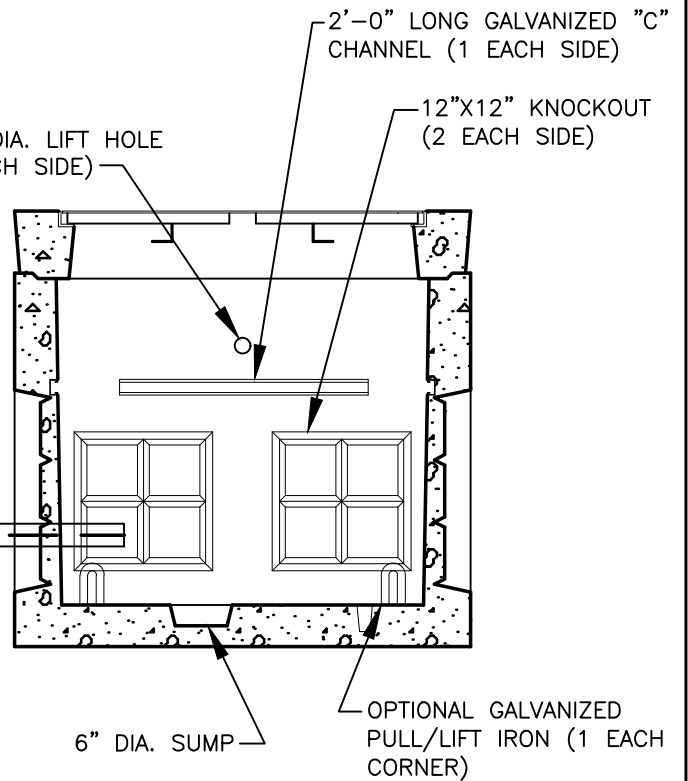
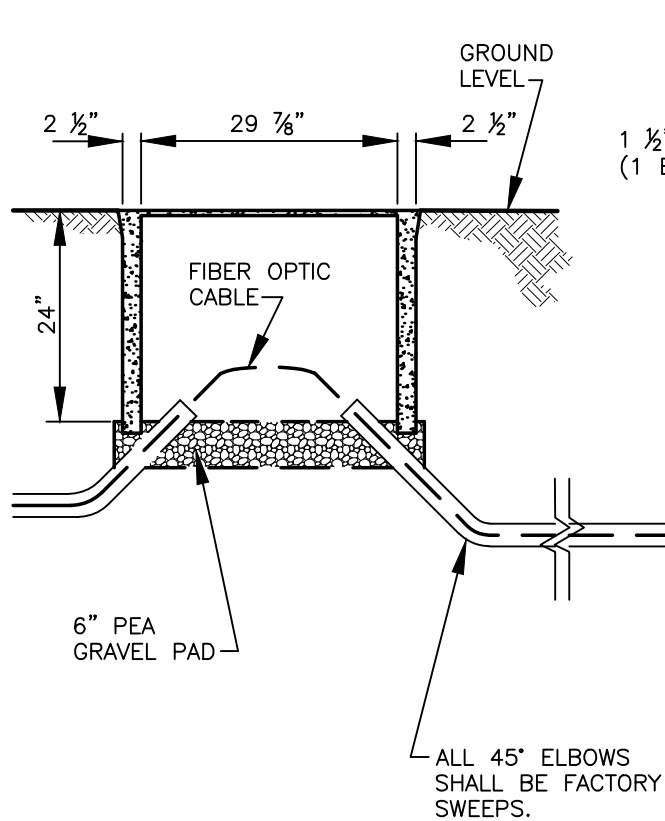
TYPICAL INTERCONNECT CONDUIT AND CABLE INSTALLATION	STANDARD PLAN NUMBER T22-01
---	--------------------------------



**TOP VIEW JUNCTION BOX**



**TOP VIEW SPlice VAULT**



ALL 45° ELBOWS SHALL BE FACTORY SWEEPS.

- NOTES:**
1. SEE STANDARD SPECIFICATIONS FOR CONDUIT DEPTH.
  2. SEE PLANS AND SPECIFICATIONS FOR CONDUIT SIZE.

I:\CITYAPPS\AUTOCAD\STD\_DETAILS\DRAWING\_FILES\T22-03

REV NO.	DATE	BY	APPR	AGE
1	3/06	RAW		AGE
2	2/07	RAW		AGE
3	8/08	RAW		AGE
4	1/15	RAW	CJC	
5	2/21	OIS	CJC	
6	9/21	RAW	CJC	

PUBLIC WORKS – STREETS AND TRANSPORTATION

APPROVED BY: *[Signature]*  
TRAFFIC ENGINEER MANAGER

APPROVED DATE: 9/1/2021



INTERCONNECT JUNCTION BOX TO PULL BOX DETAIL

STANDARD PLAN NUMBER  
T22-03