

SEE CONSTRUCTION NOTES ON STANDARD PLAN T24-01B.

SCHOOL FLASHER  
STANDARD DETAIL  
VIEWS

STANDARD PLAN NUMBER  
T24-01A



REV. NO.	DATE	BY	APP'D
1	2/21	OS	CJC
2	9/21	RAW	CJC

PUBLIC WORKS - STREETS AND TRANSPORTATION

APPROVED BY: *[Signature]*  
TRAFFIC ENGINEER MANAGER  
APPROVED DATE: 9/1/2021

FRONT

BACK

SIDE

**NOTES:**

IN ACCORDANCE WITH RCW 19.122 "UNDERGROUND UTILITIES", THE CONTRACTOR, PRIOR TO COMMENCING ANY EXCAVATION, SHALL PROVIDE NOTICE OF THE SCHEDULED EXCAVATION TO ALL OWNERS OF UNDERGROUND FACILITIES BY CALLING THE CLARK COUNTY UTILITY COORDINATING COUNCIL'S "ONE CALL" NUMBER 1-800-424-5555. THE NOTICE SHALL BE GIVEN TO THE OWNERS OF THE FACILITIES NOT LESS THAN TWO BUSINESS DAYS OR MORE THAN 10 BUSINESS DAYS BEFORE EXCAVATION. THIS NOTICE SHALL BE PROVIDED PRIOR TO TRENCHING AND EXCAVATION FOR THE FOUNDATION.

THE CONTRACTOR IS RESPONSIBLE FOR CONTACTING CLARK PUBLIC UTILITIES FOR NEW ELECTRICAL SERVICE. FOR CONNECTION TO EXISTING LIGHT POLE, POWER IS TO BE CONNECTED AT THE BASE OF THE LIGHT POLE.

THE CONTRACTOR IS RESPONSIBLE FOR OBTAINING ELECTRICAL PERMITS FROM COMMUNITY AND ECONOMIC DEVELOPMENT DEPARTMENT AT 415 W. 6TH ST.

PAGER SYSTEM SHALL BE ELTEC TC2000.

**GENERAL NOTES:**

SIGN COLORS: PER MUTCD 7B.07 "SCHOOL WARNING SIGNS, INCLUDING THE 'SCHOOL' PORTION OF THE SCHOOL SPEED LIMIT (S5-1) SIGN AND INCLUDING ANY SUPPLEMENTAL PLAQUES USED IN ASSOCIATION WITH THESE WARNING SIGNS, SHALL HAVE A FLUORESCENT YELLOW-GREEN BACKGROUND WITH A BLACK LEGEND AND BORDER UNLESS OTHERWISE PROVIDED IN THIS MANUAL FOR A SPECIFIC SIGN.

SEE **T24-01A SCHOOL FLASHER VIEWS.**

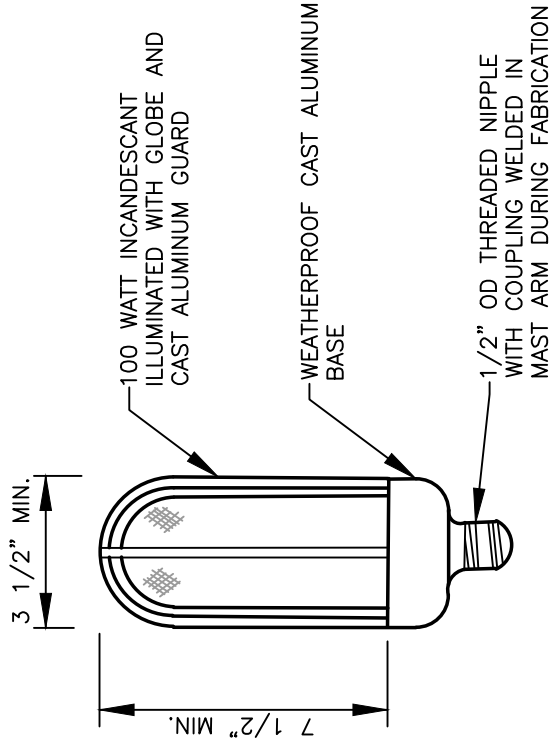
SEE **T24-01C CONTROLLER CABINET DETAIL.**

SEE **T24-01E OPTIONAL MOUNTING AND POWER CONNECTION OPTIONS.**

SEE **T24-01D WIRING DIAGRAM.**

**CONSTRUCTION NOTES:**

- ① CITY OF VANCOUVER TYPE I STANDARD 12'-6" IN LENGTH.
- ② SEE **T24-01C CONTROLLER CABINET DETAIL.**
- ③ 1 1/2" DIA. CONDUIT.
- ④ SEE INDICATION LIGHT DETAIL.
- ⑤ TOP MOUNT SEE WSDOT DETAIL J-21.16.



**INDICATION LIGHT DETAIL**

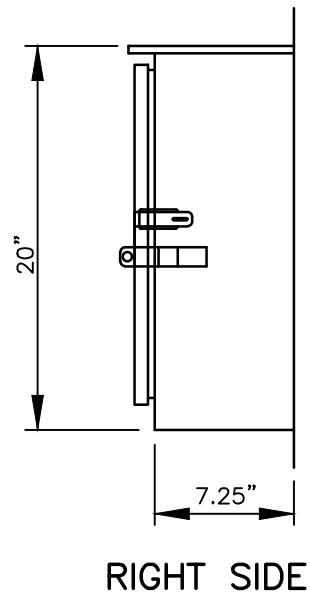
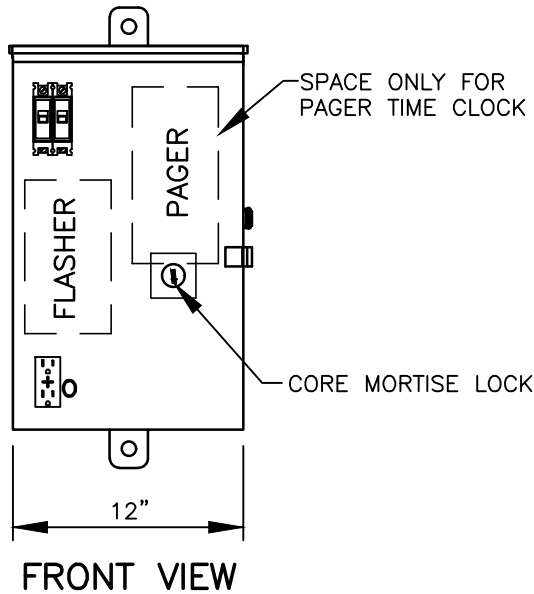
REV. NO.	DATE	BY	APPR.	DESCRIPTION
1	2/21	OS	CJC	PUBLIC WORKS - STREETS AND TRANSPORTATION
2	9/21	RAW	CJC	

APPROVED BY: *[Signature]* TRAFFIC ENGINEER MANAGER  
 APPROVED DATE: 9/1/2021



SCHOOL FLASHER STANDARD DETAIL  
 CONSTRUCTION NOTES AND  
 INDICATOR LIGHT DETAIL

STANDARD PLAN NUMBER  
 T24-01B



**ENCLOSURE CONSTRUCTION NOTES**

1. EXTERIOR, 1/8" ALUMINUM, AND INTERIOR 14 GA COLD ROLLED STEEL ELECTRICALLY WELDED AND REINFORCED WHERE REQUIRED.
2. CONSTRUCTION WILL BE NEMA 3R, RAIN TIGHT.
3. ALL NUTS, BOLTS AND SCREWS WILL BE STAINLESS STEEL.
4. NUTS, BOLTS AND SCREWS WILL NOT BE VISIBLE FROM OUTSIDE OF ENCLOSURE.
5. NAMEPLATES WILL BE PROVIDED AS REQUIRED.
6. CONTROL WIRING WILL BE MARKED AT BOTH ENDS BY PERMANENT WIRE MARKERS.
7. A PLASTIC COVERED WIRING DIAGRAM WILL BE ATTACHED TO THE INSIDE OF THE FRONT DOOR.
8. ENCLOSURE WILL BE FACTORY WIRED AND CONFORM TO REQUIRED NEMA STANDARDS.
9. COLOR TO BE SPECIFIED PER JOB, PER CITY OF VANOCUVER'S TRAFFIC ENGINEER OR PROJECT MANAGER.

I:\CITYAPPS\AUTOCAD\STD\_DETAILS\DRAWING\_FILES\T24-01C

REV NO.	DATE	BY	APPR
1	2/21	OIS	CJC
2	9/21	RAW	CJC

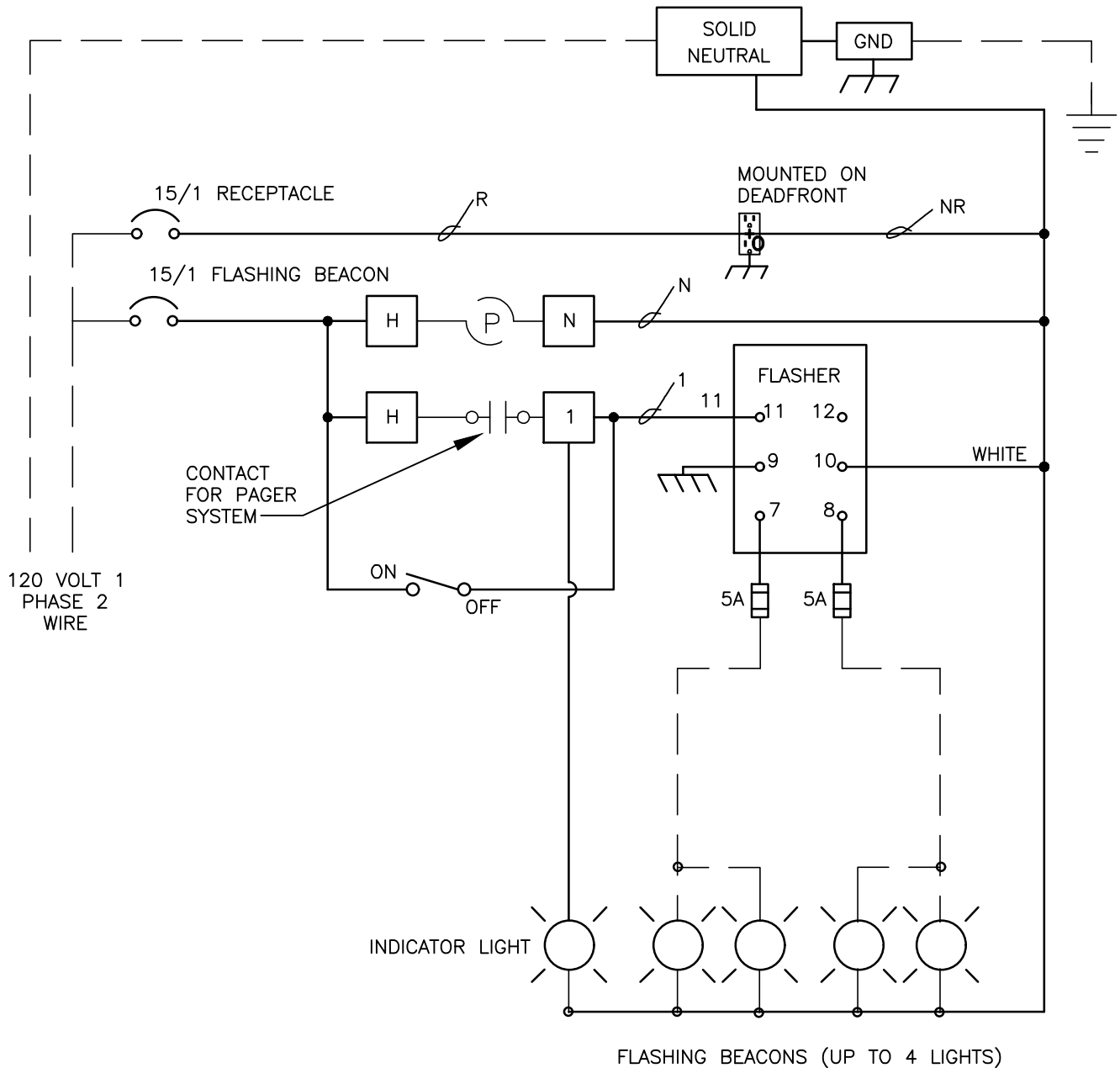
PUBLIC WORKS – STREETS AND TRANSPORTATION

APPROVED BY: *[Signature]*  
TRAFFIC ENGINEER MANAGER

APPROVED DATE: 9/1/2021



SCHOOL FLASHING STANDARD DETAILS CONTROL CABINET DETAIL	STANDARD PLAN NUMBER T24-01C
---	------------------------------------



□ = TERMINAL BLOCK

⌘ = WIRE TAG

I:\CITYPPS\AUTOCAD\STD\_DETAILS\DRAWING\_FILES\T24-01D

REV. NO.	DATE	BY	APPR
1	2/21	OIS	CJC
2	9/21	RAW	CJC

PUBLIC WORKS - STREETS AND TRANSPORTATION

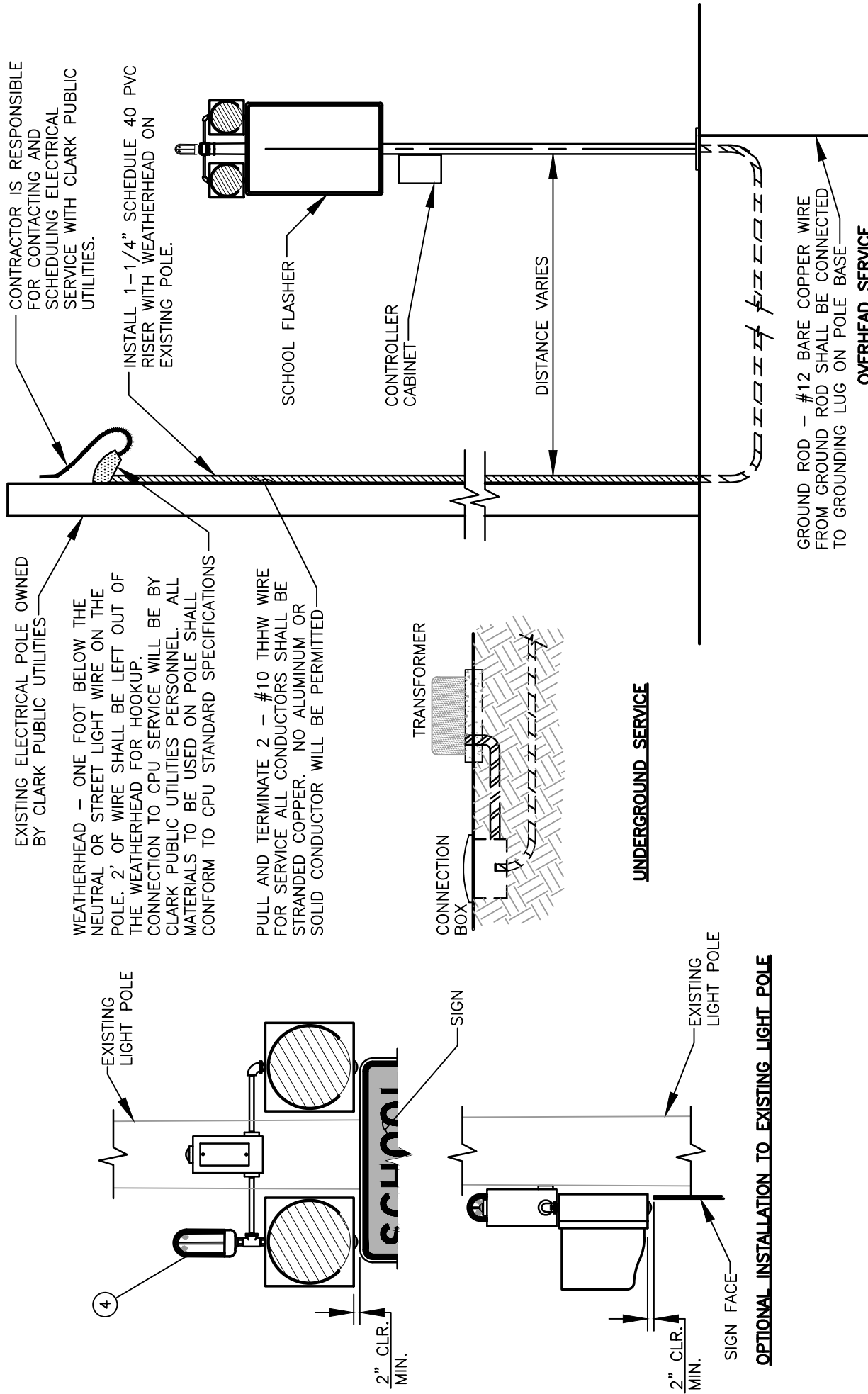
APPROVED BY: *[Signature]*  
TRAFFIC ENGINEER MANAGER

APPROVED DATE: 9/1/2021



SCHOOL FLASHING STANDARD DETAILS WIRING DIAGRAM

STANDARD PLAN NUMBER  
T24-01D



CONTRACTOR IS RESPONSIBLE FOR CONTACTING AND SCHEDULING ELECTRICAL SERVICE WITH CLARK PUBLIC UTILITIES.

INSTALL 1-1/4" SCHEDULE 40 PVC RISER WITH WEATHERHEAD ON EXISTING POLE.

SCHOOL FLASHER

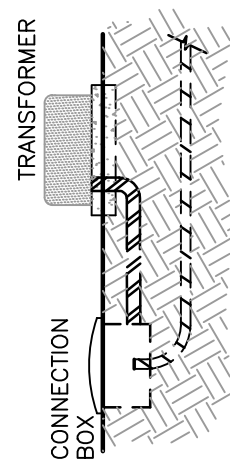
CONTROLLER CABINET

DISTANCE VARIES

EXISTING ELECTRICAL POLE OWNED BY CLARK PUBLIC UTILITIES

WEATHERHEAD - ONE FOOT BELOW THE NEUTRAL OR STREET LIGHT WIRE ON THE POLE. 2' OF WIRE SHALL BE LEFT OUT OF THE WEATHERHEAD FOR HOOKUP. CONNECTION TO CPU SERVICE WILL BE BY CLARK PUBLIC UTILITIES PERSONNEL. ALL MATERIALS TO BE USED ON POLE SHALL CONFORM TO CPU STANDARD SPECIFICATIONS

PULL AND TERMINATE 2 - #10 THHW WIRE FOR SERVICE ALL CONDUCTORS SHALL BE STRANDED COPPER. NO ALUMINUM OR SOLID CONDUCTOR WILL BE PERMITTED



UNDERGROUND SERVICE

GROUND ROD - #12 BARE COPPER WIRE FROM GROUND ROD SHALL BE CONNECTED TO GROUNDING LUG ON POLE BASE

OVERHEAD SERVICE

REV. NO.	DATE	BY	APPROVED
1	2/21	OS	CJC
2	9/21	RAW	CJC

PUBLIC WORKS - STREETS AND TRANSPORTATION

APPROVED BY: *[Signature]* TRAFFIC ENGINEER MANAGER 9/1/2021

APPROVED DATE:

CITY OF **Vancouver** WASHINGTON

SCHOOL FLASHER STANDARD DETAIL  
 OPTIONAL INSTALLATION ON EXISTING LIGHT POLE AND SERVICE CONNECTION

STANDARD PLAN NUMBER  
 T24-01E

OPTIONAL INSTALLATION TO EXISTING LIGHT POLE

EXISTING LIGHT POLE

SIGN

EXISTING LIGHT POLE

SIGN FACE

2" CLR. MIN.

2" CLR. MIN.