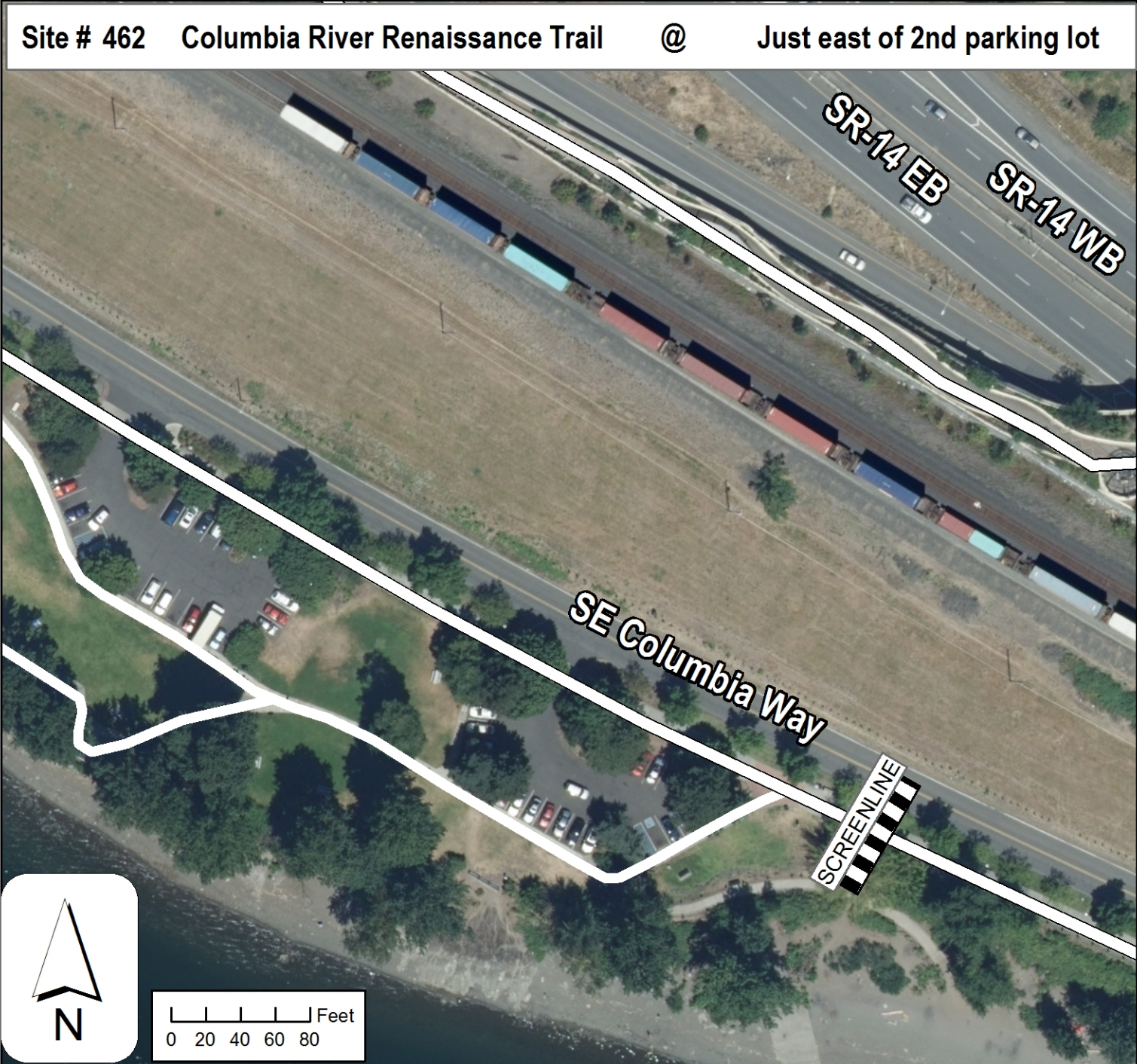




Site ID: 462 Trail Name: Columbia River Renaissance Trail Location: Just east of 2nd parking lot

- To count via the web App, point your smart phone's web browser to <https://gis.oregonmetro.gov/trailcounter>.
- Only use the paper form or the App, not both.
- Count for two hours in 15-minute increments.
- Count every person each time they cross your screenline.
- Remember to count the number of people on the bicycle, not the number of bicycles.
- Stroller passengers are counted as pedestrians, bicycle trailer passengers are counted as bicyclists.



Notes: