

Parks Update

PRAC Meeting

November 15, 2023

Community Parks

- **Oakbrook**- Stage 1 construction to start this fall
- **Bagley**- Complete master plan by February
 - Phase 1- Plans and specification work to begin in March
 - Phase 1 construction to be complete 2026
- **Shaffer**- Complete master plan by February
 - Phase 1 plans and specification to start in March



LEGEND

EXISTING ELEMENTS TO REMAIN

-  ASPHALT PATHS
-  STORMWATER CHANNEL
-  STORMWATER PIPE & INLET/OUTLET
-  PICNIC TABLE PADS
-  TENNIS COURT (RESURFACING DATE TBD)
-  PLAY AREA (CURB AND WOOD CHIPS ONLY)

PHASE 1 ELEMENTS

-  PROPOSED TREES
-  PLANTING AREA
-  PICNIC SHELTERS
-  STANDARD & ADA PICNIC TABLES
-  BENCH
-  DRINKING FOUNTAIN
-  GARBAGE CAN
-  (A) NATIVE PLANTING AREAS
-  (B) HABITAT BUFFER RESTORATION
-  (C) PORTLAND LOO
-  (D) ACCESSIBLE STREET PARKING (2 ADA SPACES)
-  (E) PLAY AREA
-  (F) COVERED PICNIC AREA (4 ADA PICNIC TABLES)
-  (G) PICKLEBALL (4 COURTS)

Bagley Community Park

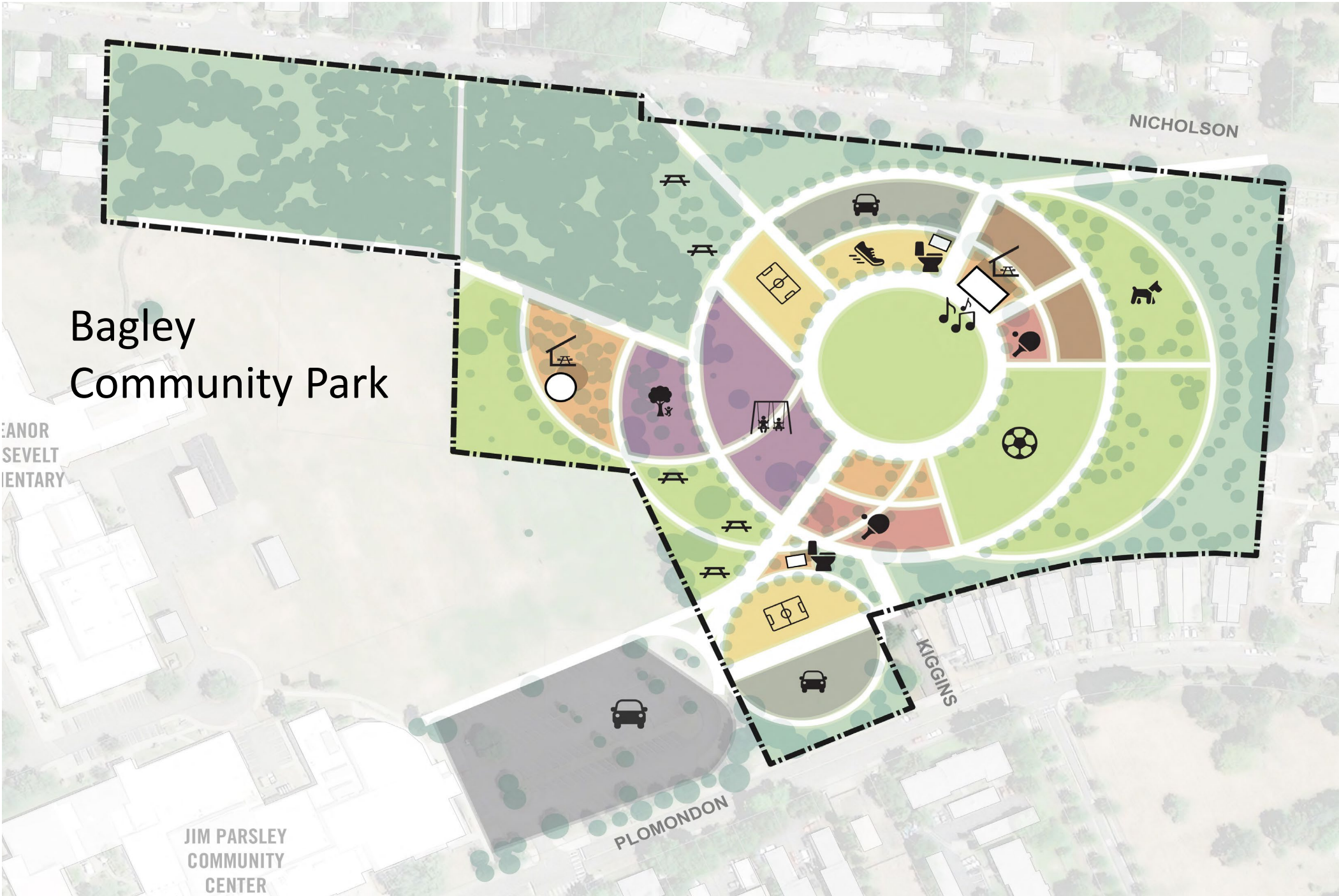
ANOR SEVELT
ELEMENTARY

JIM PARSLEY
COMMUNITY
CENTER

NICHOLSON

KIGGINS

PLOMONDON





Bagley Community Park

NICHOLSON

ANOR
SEVELT
ELEMENTARY

VIRGINIA

PLOMONDON

JIM PARSLEY



Bagley Community Park

ELEANOR
SEVELT
ELEMENTARY

JIM PARSLEY
COMMUNITY
CENTER

NICHOLSON

KIGGINS

PLOMONDON



A Primary Path (with benches)



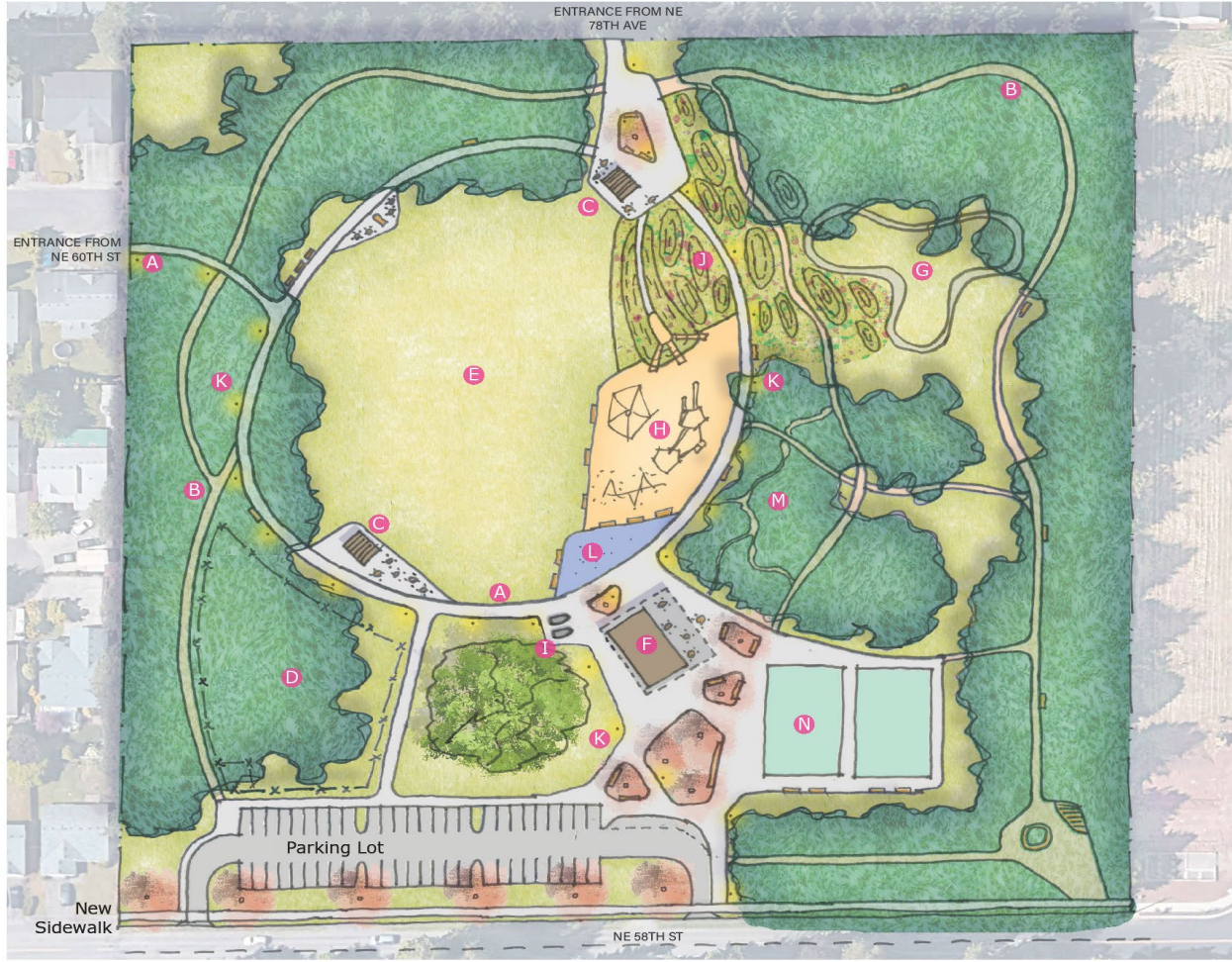
B Secondary Path (with benches)



C Picnic Shelter



D Off-Leash Dog Area



I Restrooms



J Meadow Mounds



K Path Lighting



L Spray Play



M Forest Play



N Sport Courts



E Event Lawn



F Pavilion



G Bicycle Pump Track



H Play Structures

Neighborhood Parks, in the works

Van Vleet- theme- Western wildlife (bears/beavers)

Construction to start in December

Finish park by March

Columbia Lancaster- theme- STEM

Construction to start in December

Finish by March

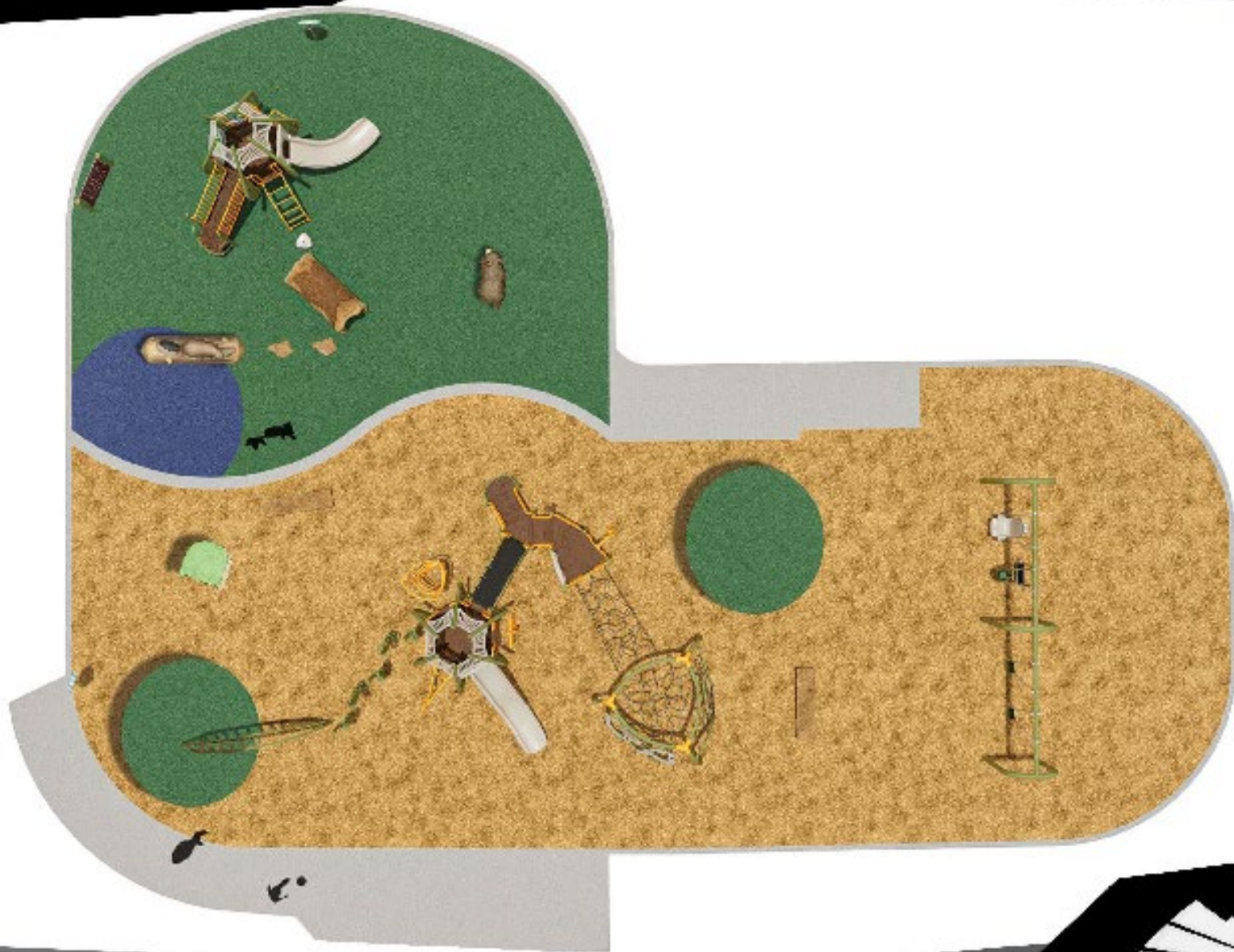
Fruit Valley- theme- Birds of the lowlands

Master plan by January

Plans and specifications in 2024

Construction/completion in 2025

**Van Fleet Park, Project 109149-01-Opt 11A
Vancouver, WA**



Van Fleet Park, Project 109149-01-Opt 11A
Vancouver, WA



A STRONG FOUNDATION IN PLAY FOR OVER 60 YEARS | Ph (435) 245-5056 | F 435 245-5067 | Lindsay@gwpark.com



Van Fleet Park, Project 109149-01-Opt 11A
Vancouver, WA



A STRONG FOUNDATION IN PLAY FOR OVER 60 YEARS | Ph (435) 245-5056 | F 435 245-5067 | Lindsay@gwpark.com



COLOR KEY

●	NAVY
●	AQUA
●	YELLOW
●	GRAY
■	GRAY/BLACK



