

Public Art Opportunities at Terminal 1

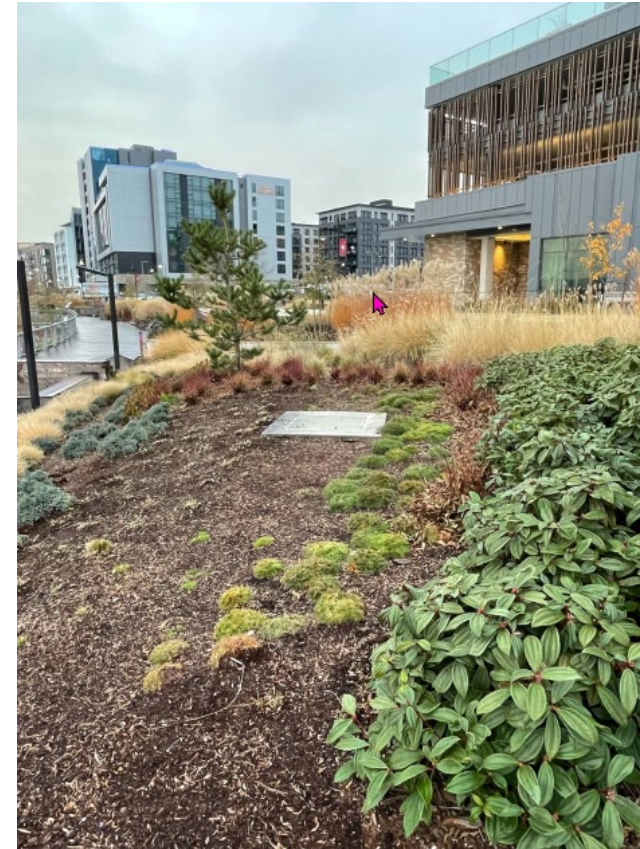
December 2023



DISCOVER TERMINAL 1

Where to start?

- We have a base/plinth at T-1 ready to go
- Can we proceed with an RFP in 2024; while also working on a larger art plan



What Could a First Sculpture Look Like? DISCOVER TERMINAL 1



“Mowitch Man,” one of two Coast Salish welcome figures carved by artist Andrea Wilbur-Sigo for the new Seattle Convention Center Summit building.

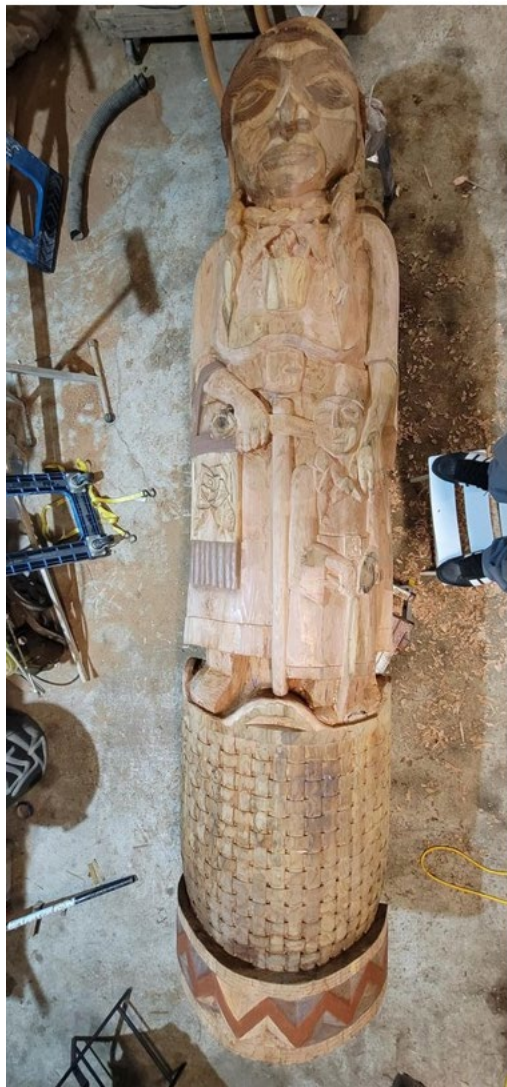


*Above: "The Creator", Salish woman with baby carried on back, also by Andrea Wilbur-Sigo.
Right: sculpture of orca dorsal fins breaching water with modern petroglyphs by Maylynn Foster of Squaxin Island and Skokomish Nations.*



Seattle Convention Center Pieces...

- The pieces are intended to emphasize a strong sense of place
- “We wanted to engage with the history of the land the building sits on”
- “They are a visual form of land acknowledgement”
- Mowitch Man faces west toward the water because the Salish people are a people of the water
- The club Mowitch Man holds was found on the site during excavation



“Mother Camas” – spirit totem being carved by Yakima tribe artist Toma Villa for public art at Fourth Plain Community Commons; or VHA?



DISCOVER TERMINAL 1

Port of Kennewick

“Willow Fish Traps”

INSTALLED

October 2018

PARTNERS

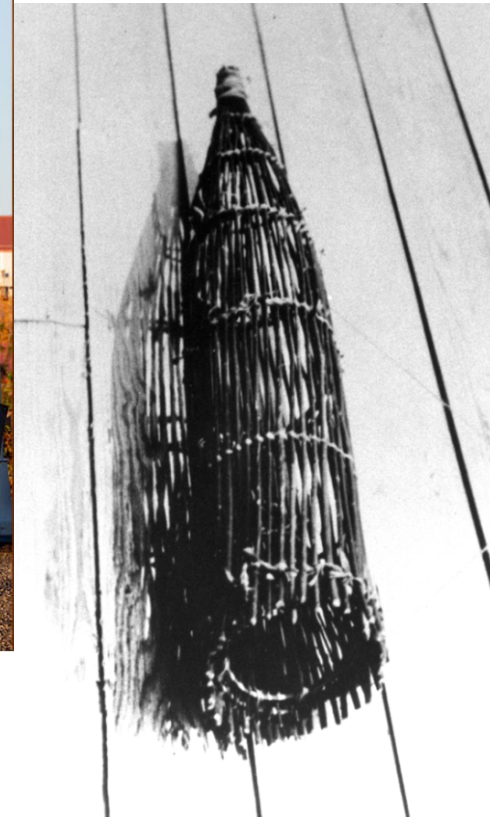
*Confederated Tribes of the Umatilla
Indian Reservation*

Board of Trustees

Tamástslikt Cultural Institute

Kennewick Arts Commission

Port of Kennewick





DISCOVER TERMINAL 1

Port of Kennewick

“The Gathering Place”



Highlights the Confederated Tribes of the Umatilla Indian Reservation’s heritage and customs of gathering tule reeds and capturing fish



DISCOVER TERMINAL 1

Other Ideas...Port of Kennewick

Metz Plaza

Shade structure features wooden beams and wire cables designed to evoke the image of a ship's bow and sails. Wisteria vines provide shade. Possible idea for the brewlab area?



INSTALLED

December 2010

PARTNERS

Columbia Center Rotary

Dick and Diane Hoch
Kennewick Arts Commission

Historic Downtown

Kennewick Partnership

Kay and Viva Metz

The Knapik family

Dennis L. Poland 9
Ray Poland & Sons, Inc.

Port of Kennewick

“Catch the Wind”

Unfurled sails represent both the wind’s power and the appeal of boating on the Columbia River.

Installed:

September 2009

Partners:

Kennewick Arts Commission

Port of Kennewick



Port of Kennewick

“Rolling Mass” – bus shelter

INSTALLED

2019

PARTNERS

Benton County Rural County
Capital Fund

City of Kennewick

Ben Franklin Transit

Columbia Center Rotary

Kennewick Arts Commission

Port of Kennewick



Port of Tacoma

“Swell” - Powder-coated steel panels



Port of Tacoma centennial artwork. RFP indicates budget was \$90,000 and entirely funded by the port.

Exhibit space inside the public market

DISCOVER TERMINAL 1



What might a timeline exhibit about the port's history look like inside the public market?

We have some good pieces to display: Prune drying rack, historical photos and many other pieces of port ephemera, Red Lion/Quay meeting room signs, pool towel sign and ships wheel in our archives.

Other Performance Art at Terminal 1

Daniels Way: “Artquake” type festival or Art in the Pearl type event

Public Plazas: Shakespeare On The Plaza; summer stage to compliment the city’s Thursdays at the Waterfront concerts; mariachi festival; expand the annual Hawaiian festival...T-1 brought in pineapples; chalk festival; expand Portland’s Winter Lights Festival over to Vancouver. Noise is an issue to contend with and lights have to be bird friendly.

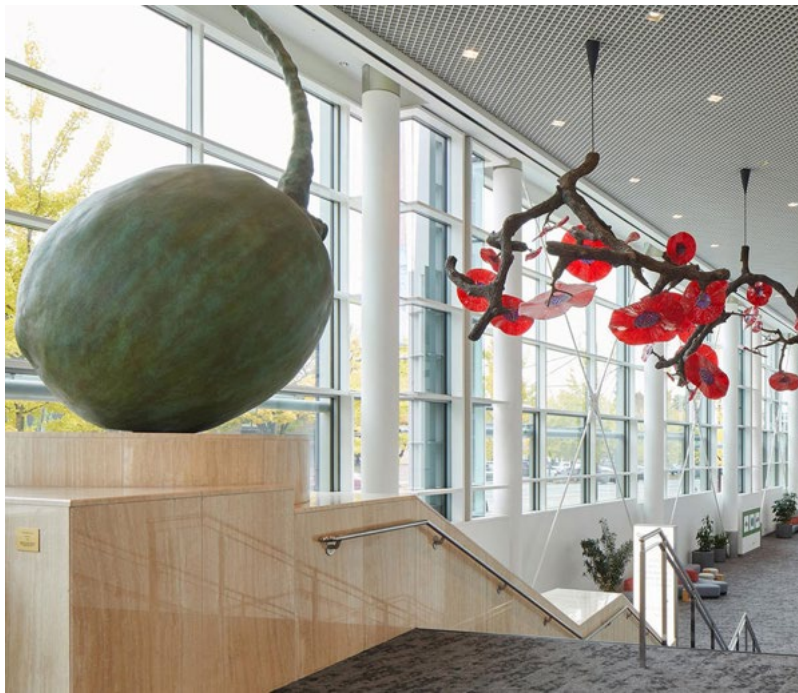
Sequim has an annual drone show over water. Amsterdam projects images on a curtain of water.



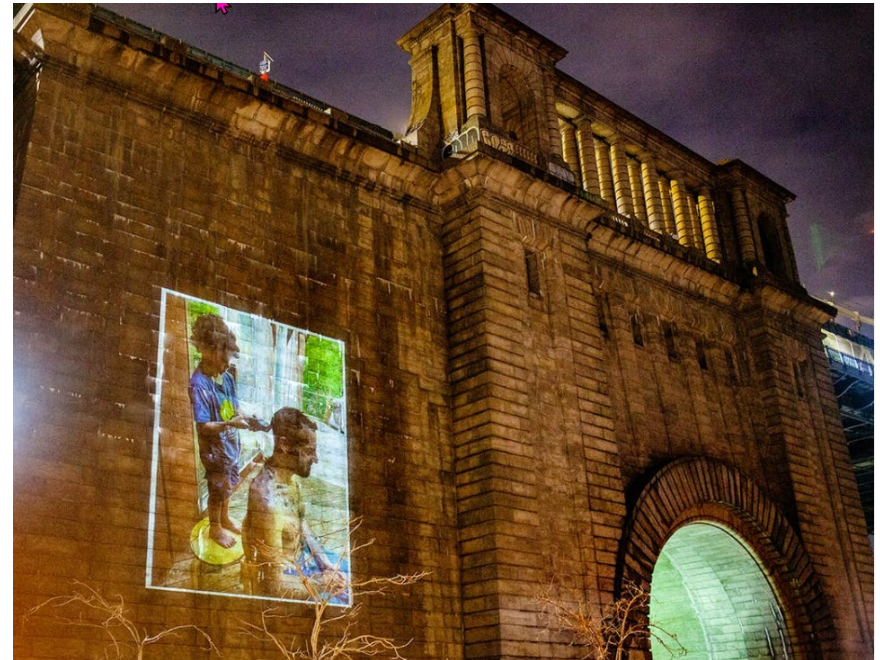
Prune Festival or art at Terminal 1?

- Port of Hueneme is the #1 banana port on the west coast. Banana Fest includes entertainment, vendors, port tours, banana inspired food, and more. Port officials say the event is an opportunity to educate the public about the port, trade and commerce.
- Other ports offer strawberry, apple and kumquat festivals – to name a few

Giant kinko berries at Oregon Convention Center



Exterior Projections with Local Artists and Photographers – possible on the public market? What about sidewalks?



Left: projections on a building in downtown Vermont. Right: Photographs projected onto the Manhattan Bridge in New York City.

Where else could art be located?





LPC's Investment is Significant

- Wayfinding signage: \$15,000 (approx. \$2,500 per sign)
- Top of Launch installation: \$150,000
- Launch switchback pieces: \$150,000 (multiple pieces that tell a story from bottom to top)
- Mural 1: \$70,000 (Columbia St. and Cascade St.)
- Mural 2: \$30,000 (Quayside and Cascade St.)
- Gallery window (Quayside St.) - Looking for a partnership with temporary rotating exhibits.



LPC's Timeline

- Their initial RFP went out in early October. RFP's due Nov. 17.
- They received multiple responses to the murals and exhibit space
- No responses to the signage, launch switchbacks and top of launch piece
- Their RFP distributed to very small group
- They went out again in December with a Jan. 1 due date. (DLR Group now coordinating.)

Thank you!!



"Salish Sea Circle" – Port Townsend