

## GUIDING PRINCIPLES



Restorative Experiences in Nature



Focus Activity Near 58th Street



Playful Pathways



Structured Play for All Ages



Lighting to Increase Park Safety



Accessibility for All Ages and Mobility Levels



Safety and Comfort



Invite Dogs

## COMMUNITY ENGAGEMENT PROCESS



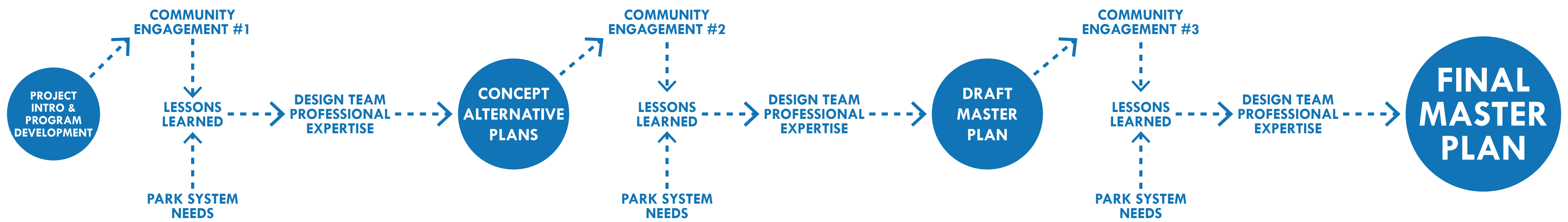
Community Engagement Open House - Spring 2022



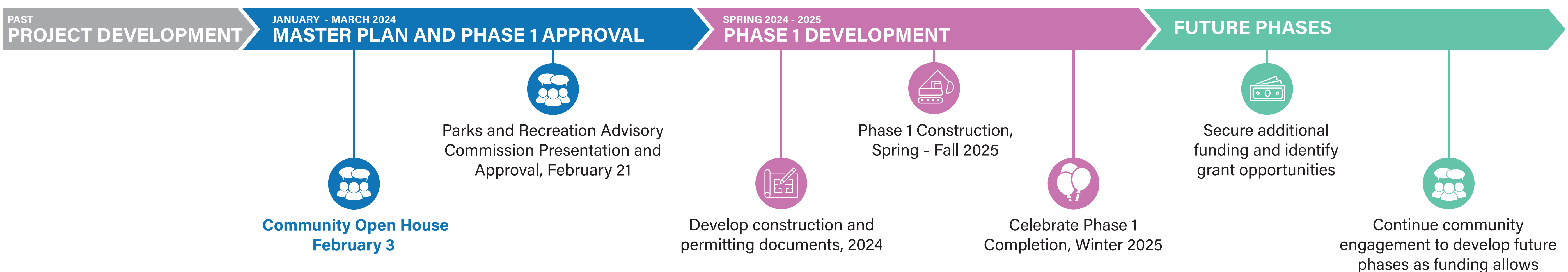
Community Engagement Design Workshop - Spring 2023



Community Engagement Open House - Summer 2023



## PROJECT SCHEDULE



# MASTER PLAN



**A** Paved Walking Loop with Street Connections and Benches



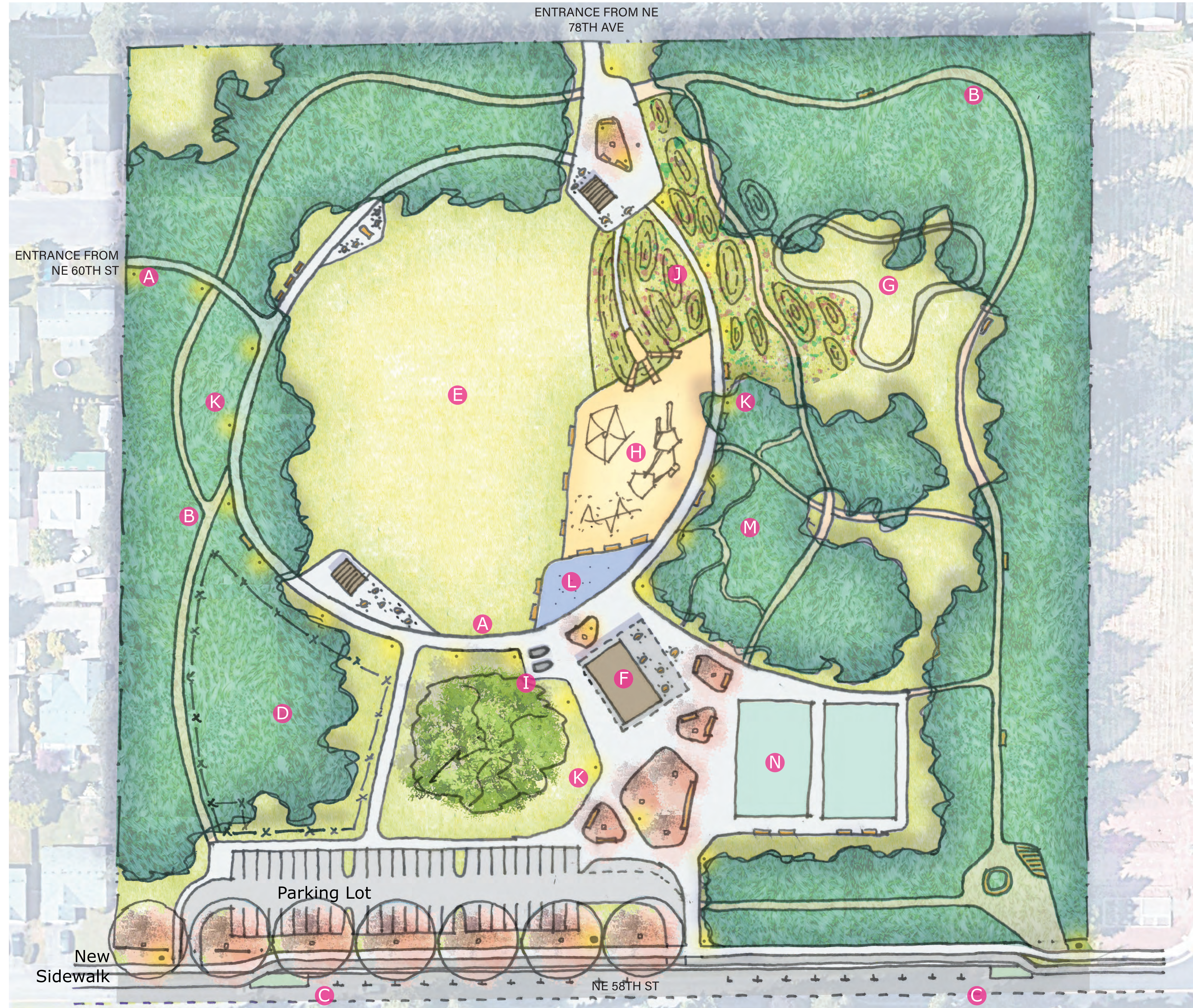
**B** Crushed Rock Path and Benches



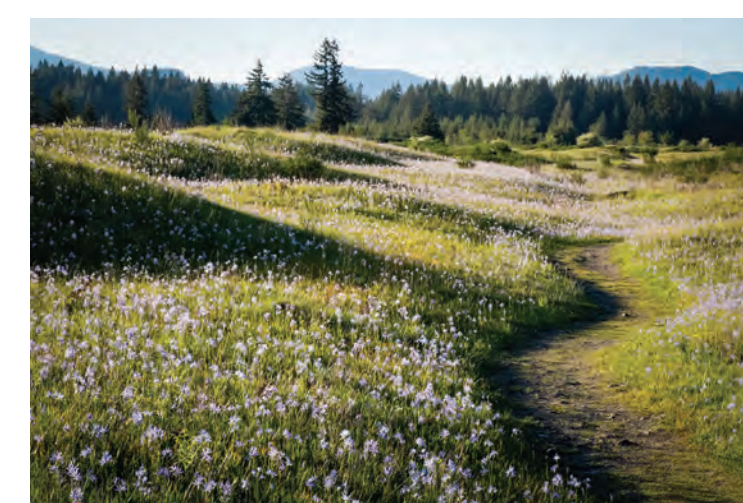
**C** Street Parking, Curb, Bike Lane, Sidewalk, Street Lights and Stormwater Planters



**D** Fenced Off-Leash Dog Area



**I** Restrooms



**J** Meadow Mounds



**K** Path Lighting



**L** Water Play



**M** Forest Play



**N** Sport Courts



**E** Event Lawn



**F** Pavilion



**G** Bicycle Pump Track



**H** Accessible Playground

# PHASE 1 PLAN



**A** Street Parking, Curb, Bike Lane, Sidewalk, Street Lights and Stormwater Planters



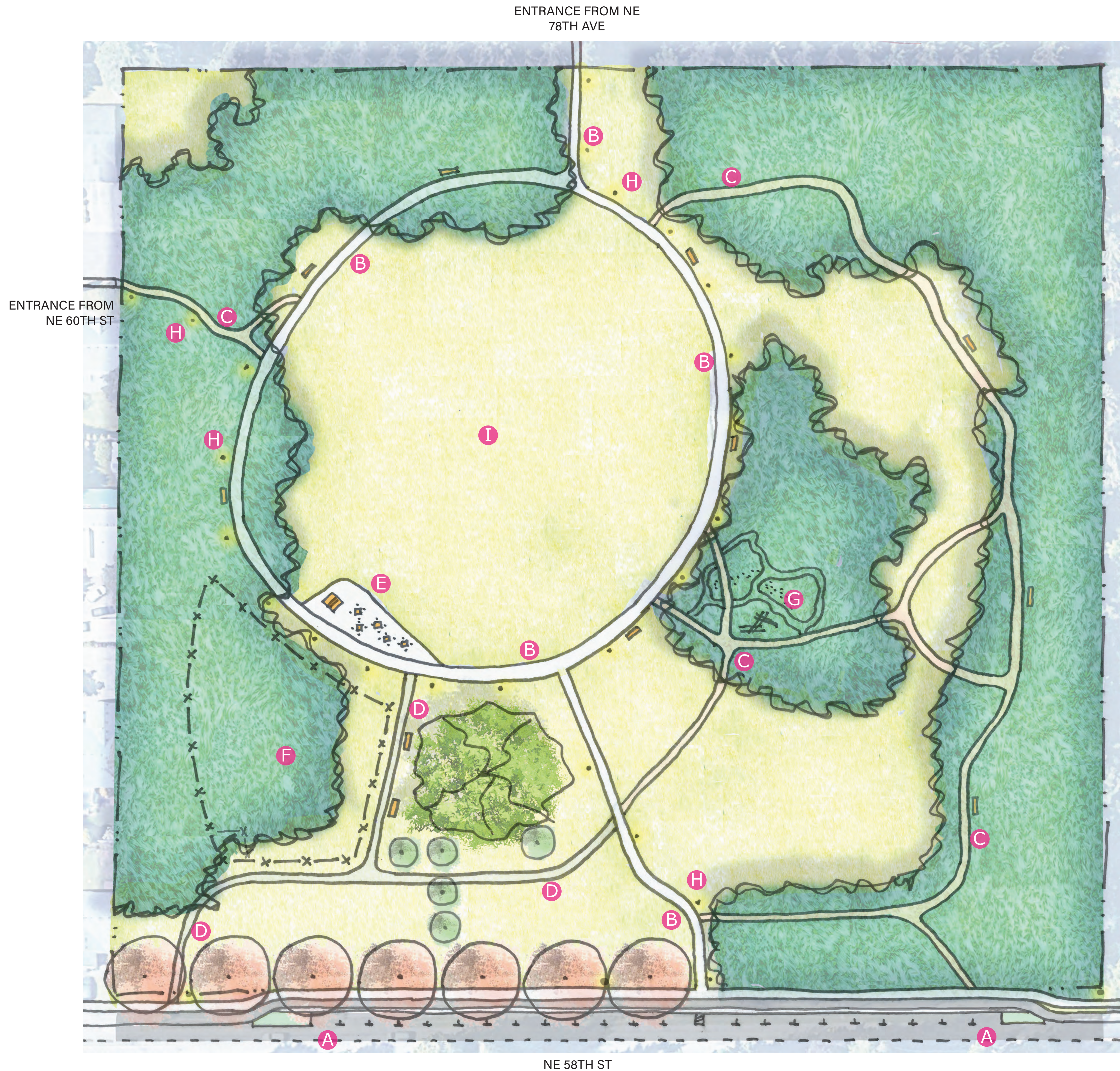
**B** Paved Walking Loop with Street Connections and Benches



**C** Refresh Existing Mulch Paths and Add Benches



**D** Crushed Rock Path and Benches



**I** Improved and Refreshed Open Lawn Area



**E** Paved Picnic Area With Tables



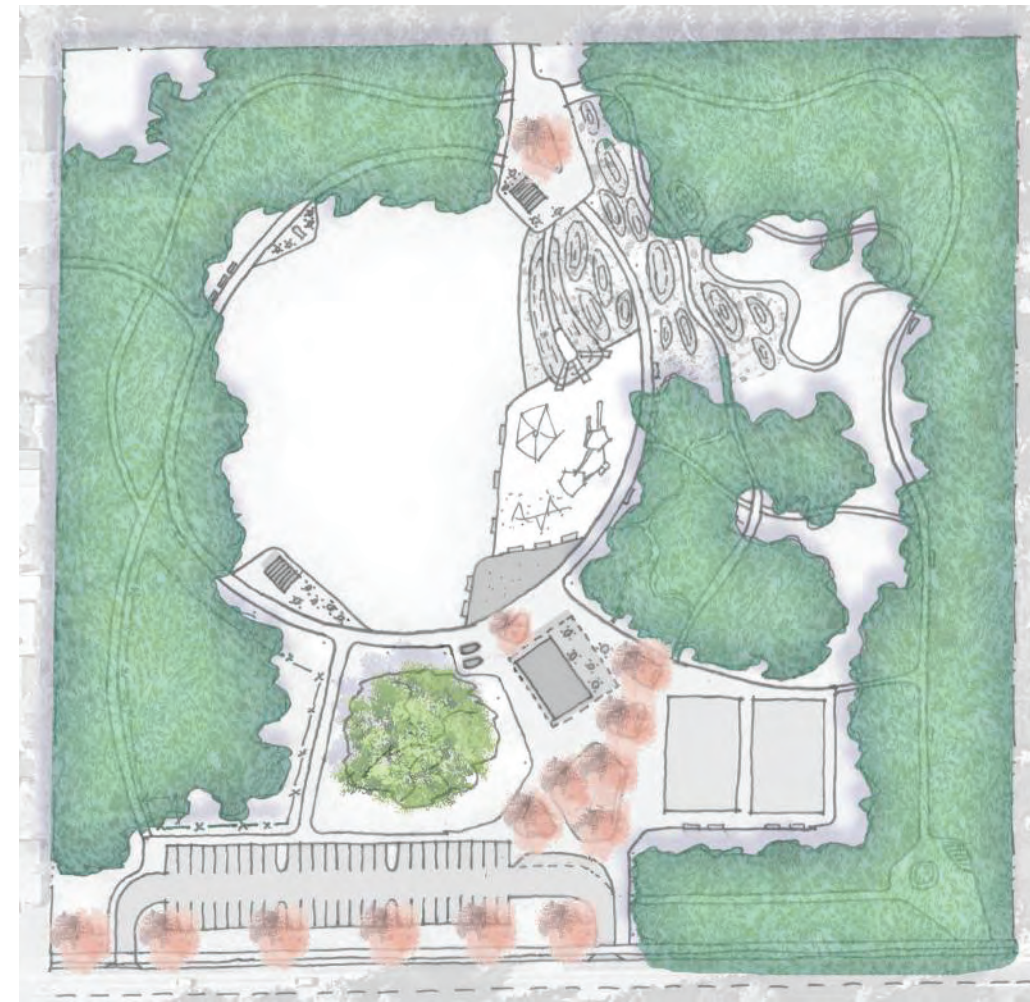
**F** Fenced Off-Leash Dog Area



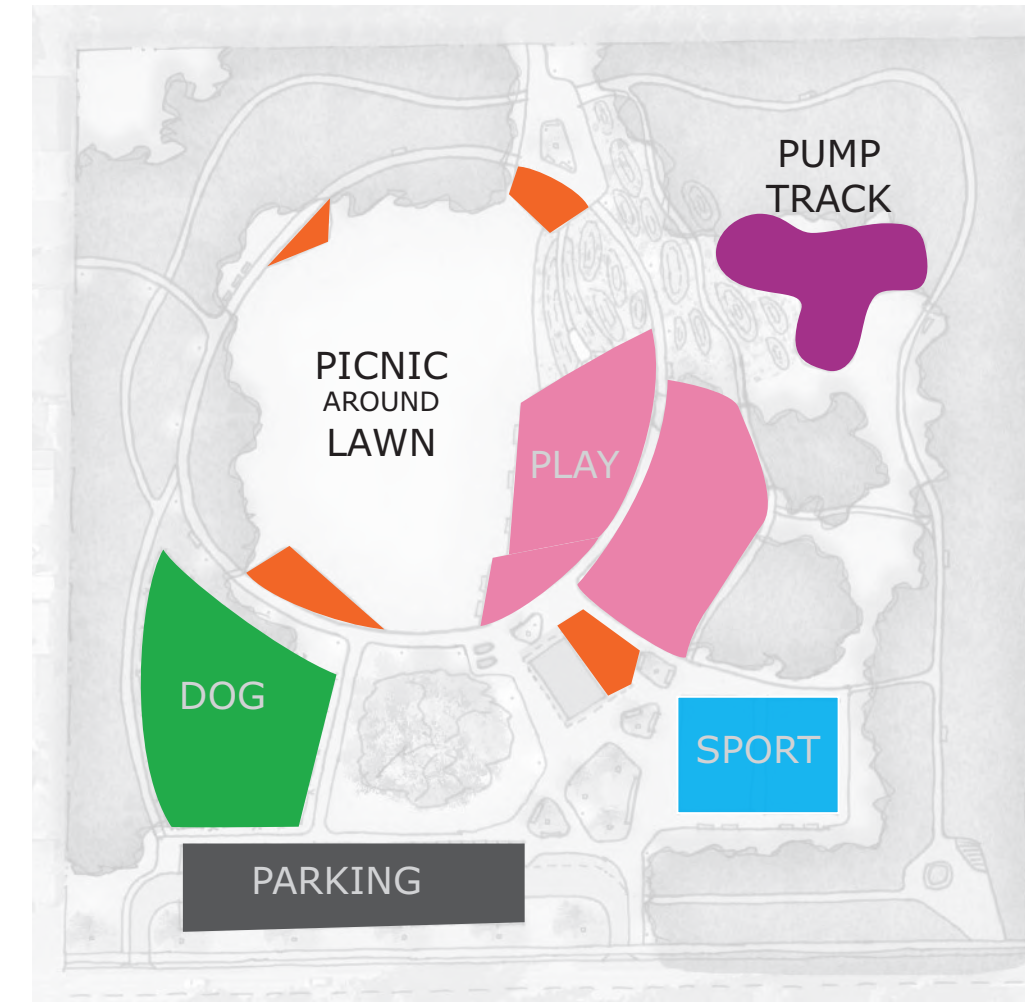
**G** Forest Play



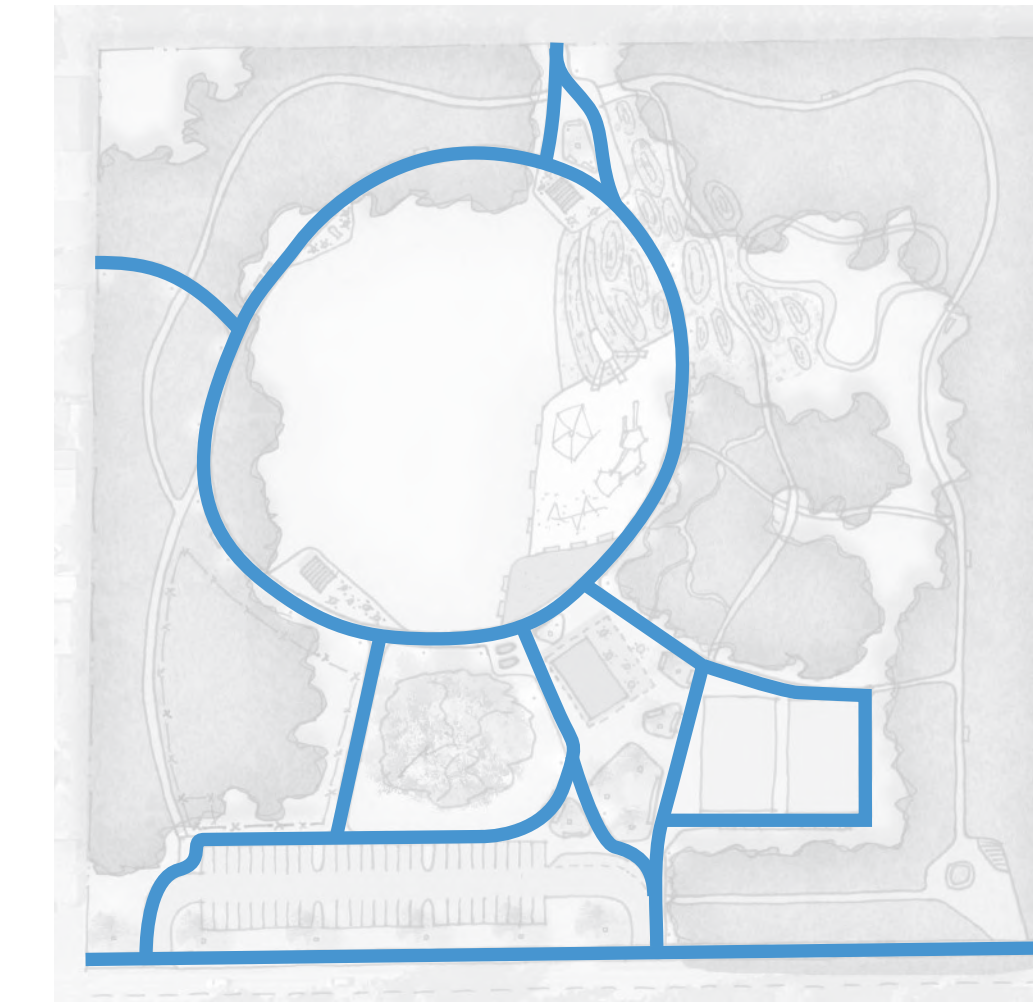
**H** Pedestrian Path Lighting



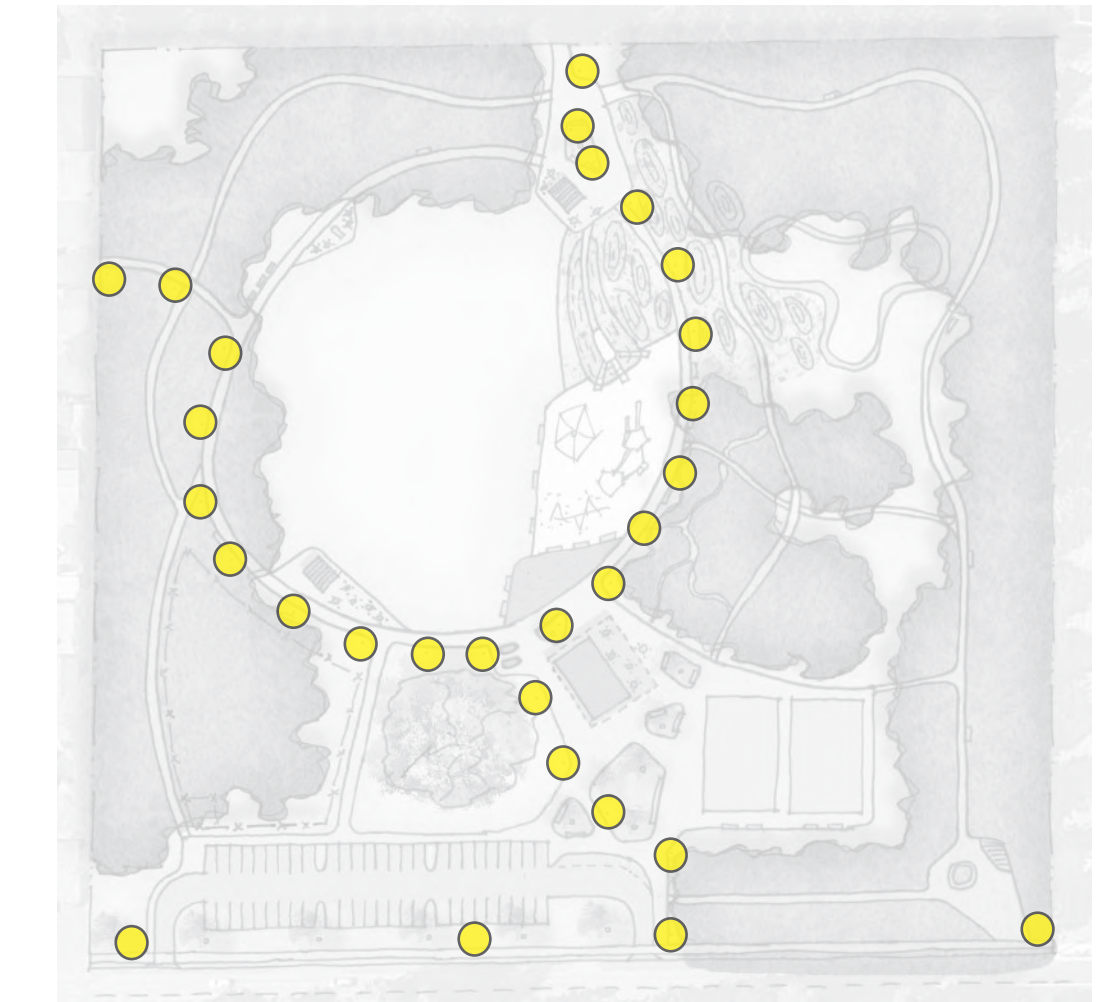
Tree Canopy



Program Diagram



Paved Circulation



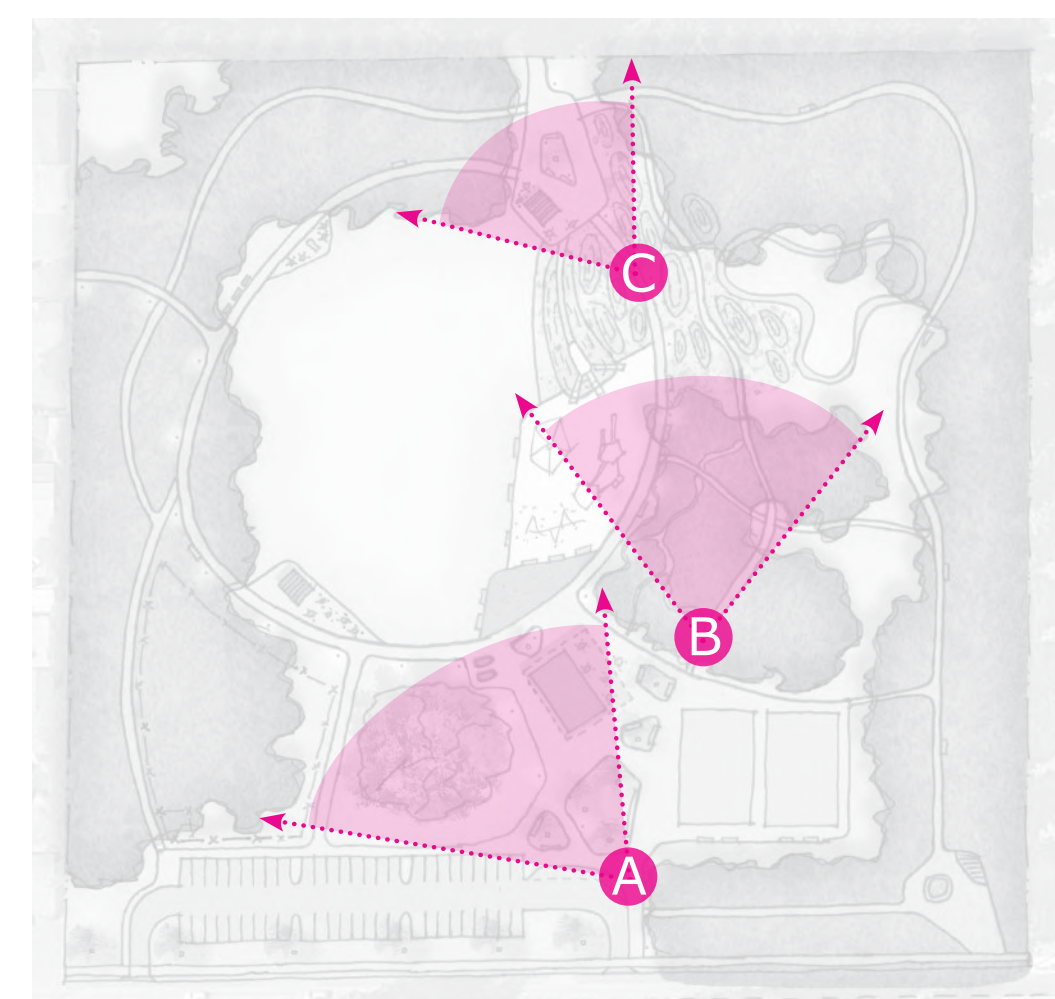
Lighting



**A** Looking across the entry plaza, past the pavilion, to the large lawn beyond.



**B** A crushed stone walking path between rows of the beautiful existing Douglas fir trees.



Key Plan



**C** Walking the main loop trail as it passes through meadow mounds on either side.