



CITY OF  
**Vancouver**  
WASHINGTON

# Raymond E. Shaffer Park Master Plan

**Roman Gutierrez**

Park Developer

Parks, Recreation and Cultural Services

Feb. 21, 2024



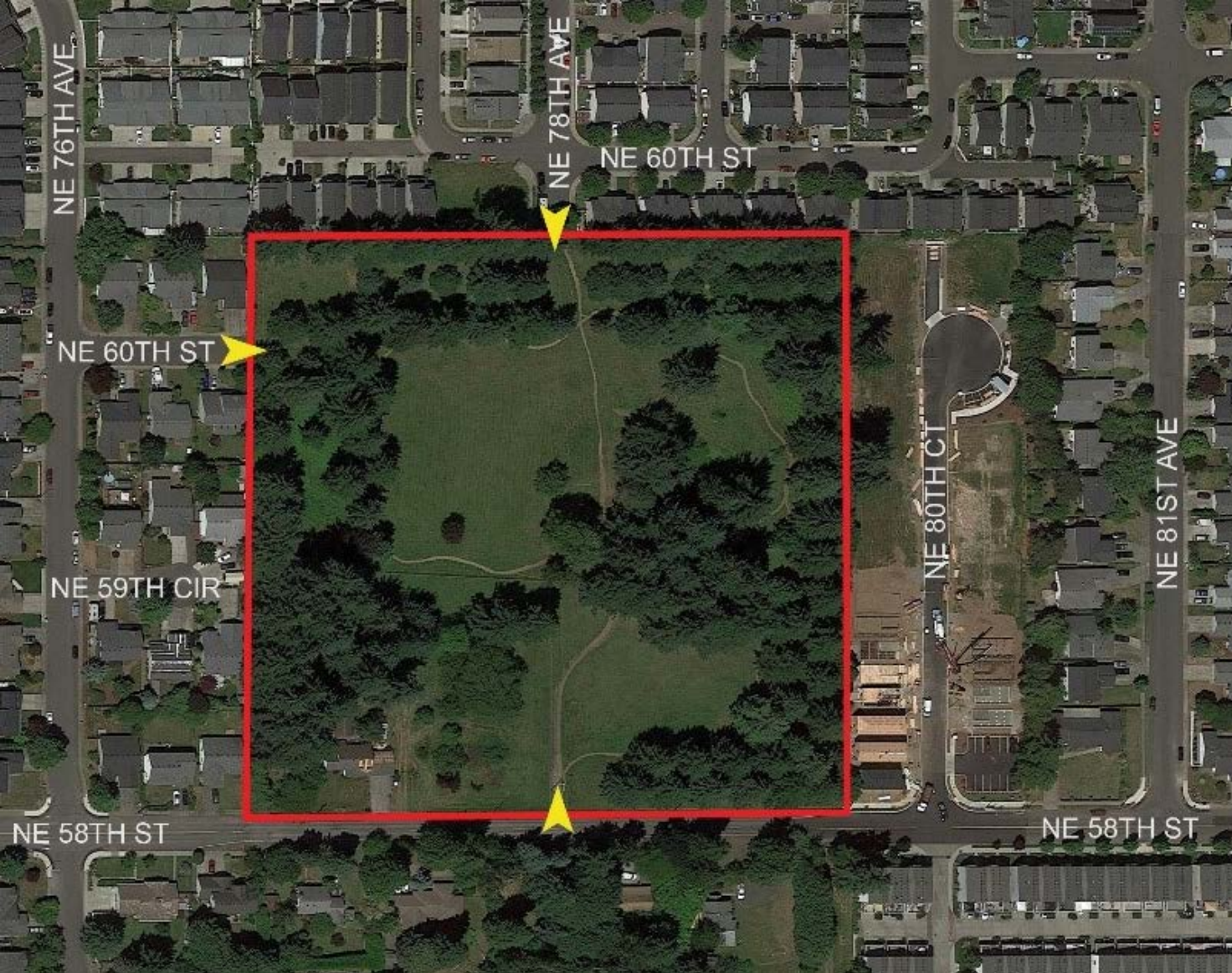
**Melody Burton**

Senior Communications Specialist

Parks, Recreation and Cultural Services

Feb. 21, 2024





# Agenda Title

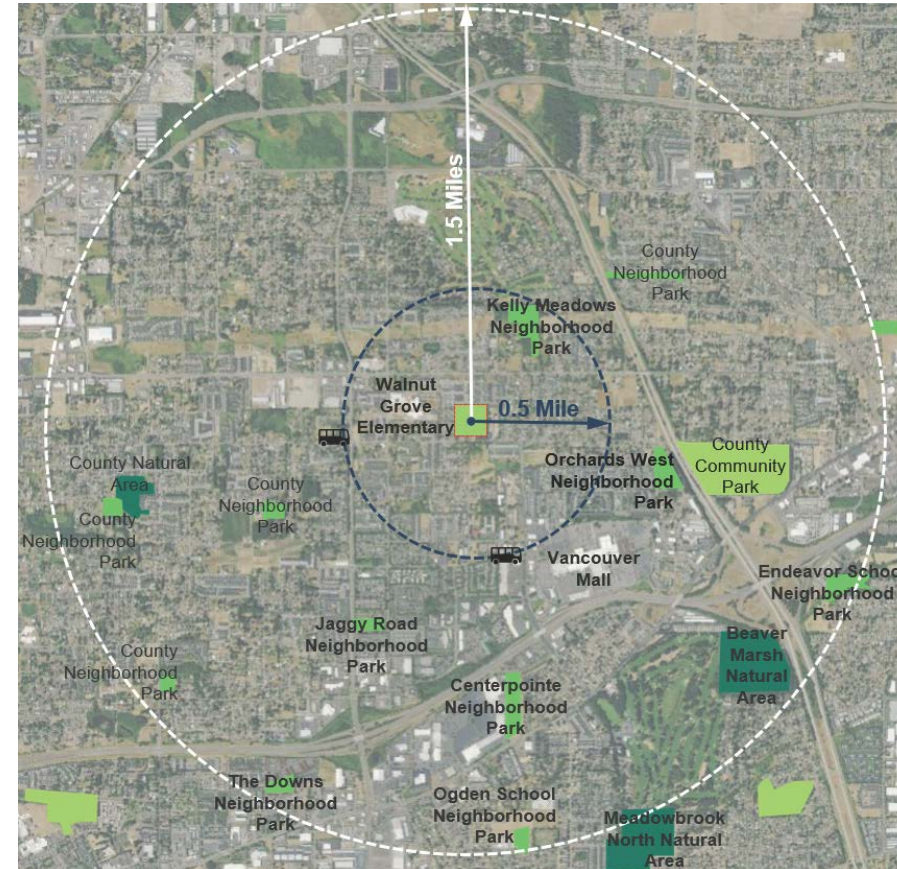
- What is a Community Park?
- Site History
- Community Engagement
- Master Plan
- Budget
- Phase 1 Construction



# Community Parks

## Service area and amenities found in community parks

- 1.5-mile service area radius for people driving to the park
- .5-mile service area radius for people walking to the park
- In Vancouver, most community parks are 10+ acres
- Parking and restrooms included
- Provide a community gathering place and unique features not available in neighborhood parks





# Raymond E. Shaffer Park

- Walnut Grove Neighborhood
- 10 acres
- Currently Undeveloped
- Diverse and Growing Service Area



# Park History

- Shaffer home and hobby farm
- Featured small orchard, chinchilla farm and family garden
- Most trees planted by Mr. Shaffer
- Purchased by Vancouver-Clark Parks in 2010, then by the City of Vancouver in 2014
- A 1.5-acre portion of the site remained home to Edith Shaffer until her passing in 2020
- Prior to demolition, the Shaffer home, was used for VFD training



# Park Character

## What makes this park unique?

- Provides important community access to nature in a densely populated area of the city
- Large trees form groves in the center of the park and rows along the edges of the park
- Grassy lawn area at the center
- Wood chip trails are popular for walkers of all ages



# Community Engagement

## Goals and tools

- Identify current uses of the park
- Invite neighbors to direct future planning
- Collaborate to create a master plan and construction phases
- Build community and create connections for future outreach
- Use digital, print and in-person resources with translations



# Open House 1 and Online Survey

March 19, 2022

Walnut Grove Elementary School

## Identified Guiding Principles

- Restorative experiences in nature
- Keep activity near 58<sup>th</sup> Street
- Create playful pathways
- Structured play for all ages
- Prioritize safety and comfort
- Focus on accessibility
- Invite dogs





# Design Workshop and Online Survey

Feb. 15, 2023

Walnut Grove Elementary School

- Over 100 people attended
- Presented through concepts and asked community members to work together in groups to create a park they all liked
- Groups presented their designs to everyone else
- Feedback informed creation of a draft master plan



# Open House 2 and Online Survey

June 28, 2023

Raymond E. Shaffer Community Park

- Presented a draft master plan based on community feedback
- Participated in an activity to help prioritize what should be included in the final master plan
- Asked questions to further refine the design
- Conversations around street improvement opportunities



# Targeted Community Engagement

## Connecting with underrepresented communities

- Opportunity to seek out feedback from demographics we haven't heard from yet
- Teen outreach at community centers and teen summer camp
- Latino community outreach at resource fairs and events
- Cultivate new relationships and inform other projects

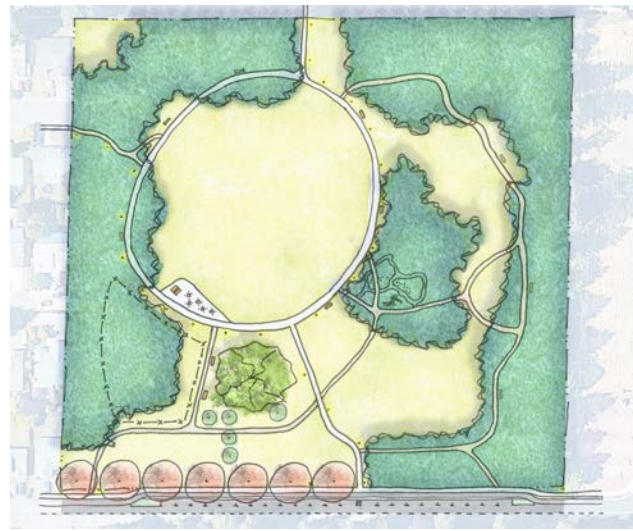


# Open House 3

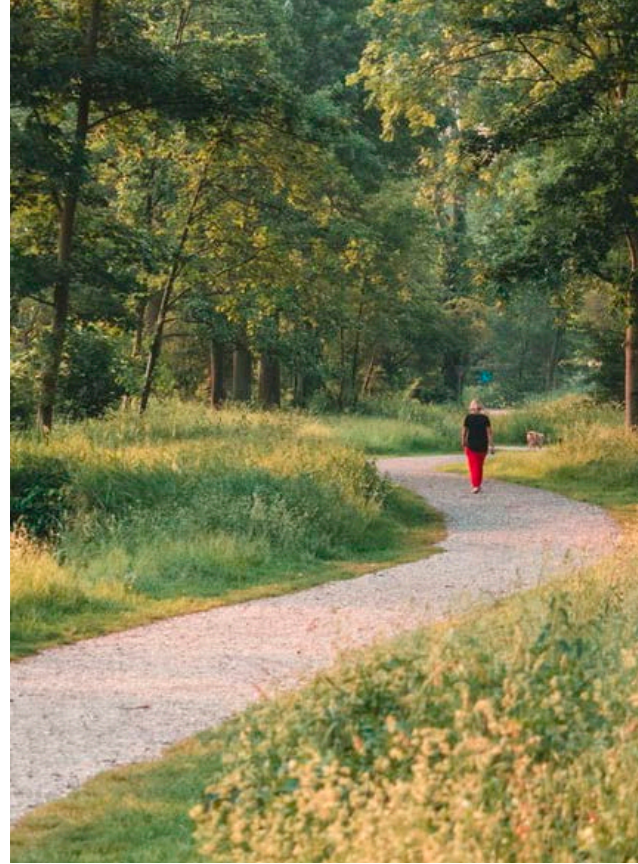
Feb. 3, 2024

Walnut Grove Elementary School

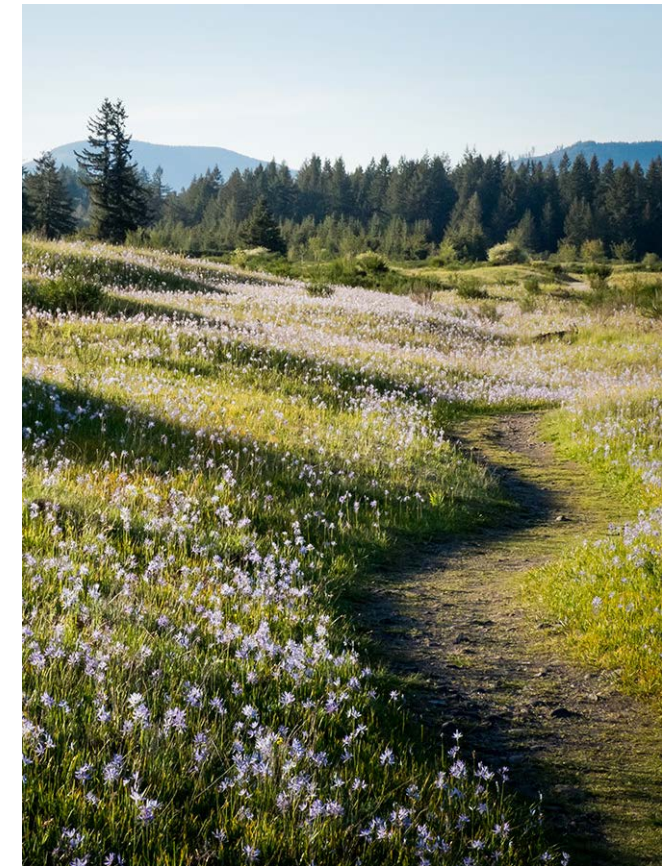
- Final chance for the community to review the master plan before it is presented to PRAC
- Review proposed Phase 1 construction plan for feedback
- Shared future opportunities for involvement with ongoing park planning and volunteering
- Did we get it right?



# Raymond E. Shaffer Park Master Plan



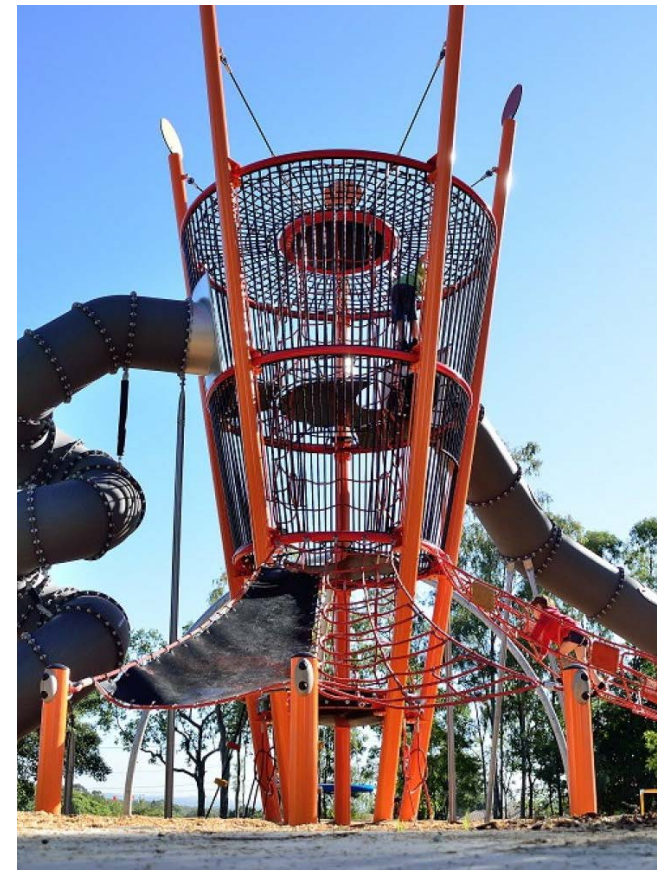
# Raymond E. Shaffer Park Master Plan



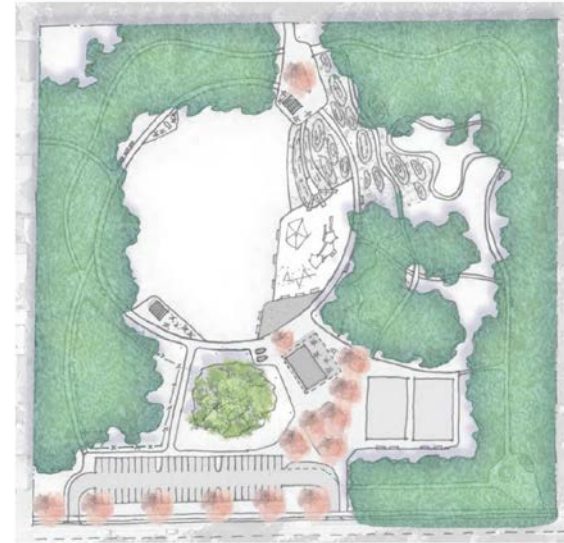
# Raymond E. Shaffer Park Master Plan



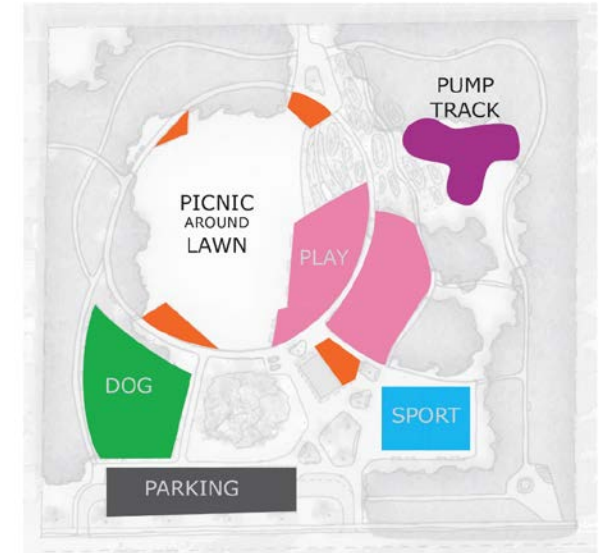
15 | Raymond E. Shaffer Park Master Plan



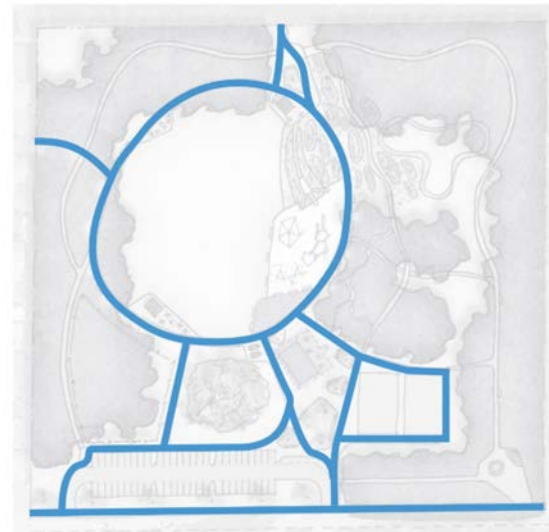
# Raymond E. Shaffer Park Master Plan



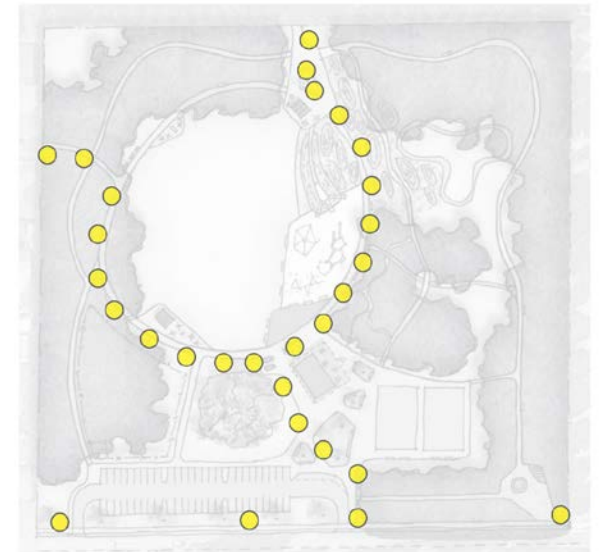
Tree Canopy



Program Diagram



Paved Circulation



Lighting



# Budget Details

## Total cost and available funding

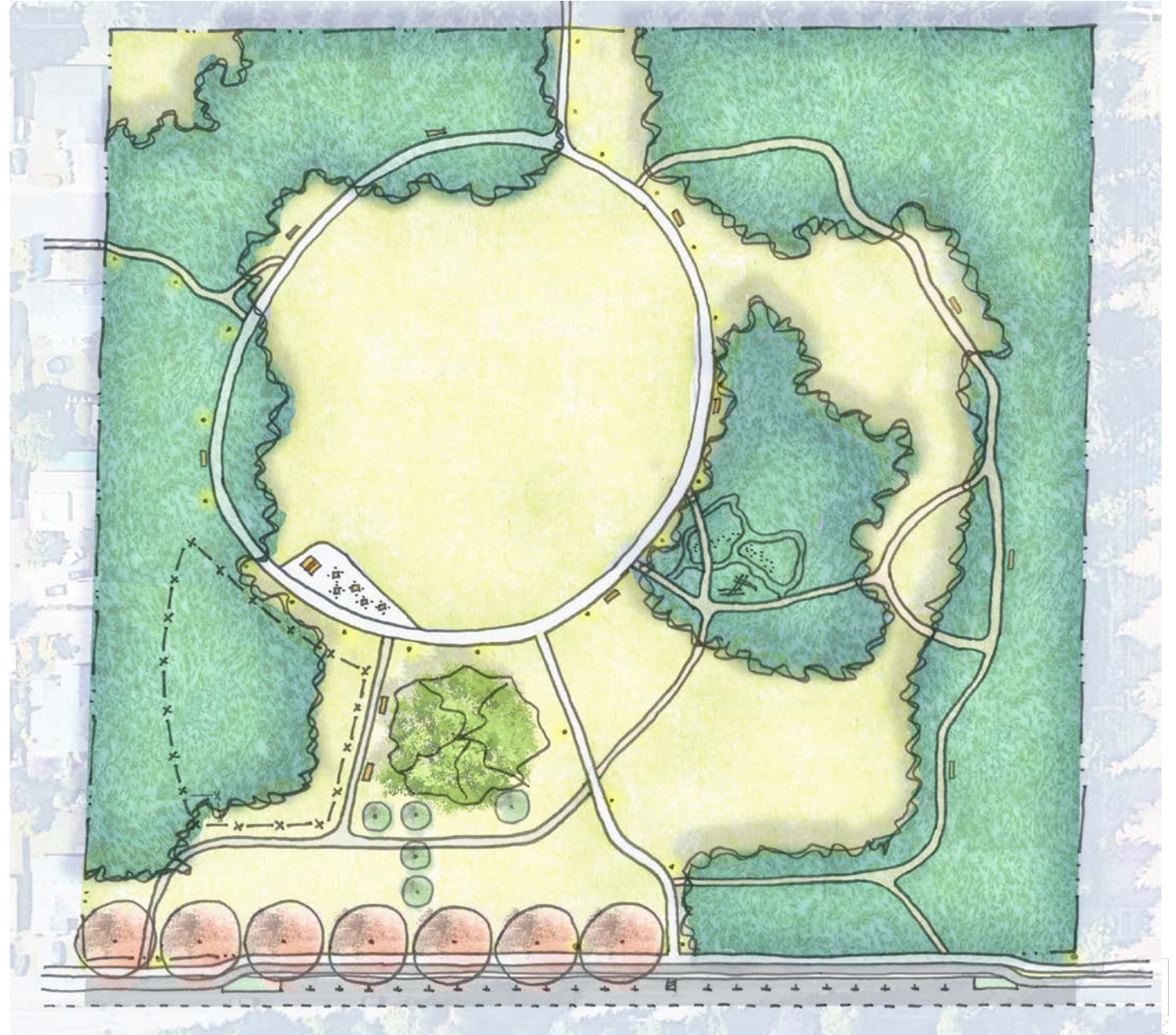
- There is \$2.44 million set aside for Shaffer Park in the current biennium budget, which runs through 2025
- The cost to complete all the items identified on the master plan is \$12 million
- Completing the first phase of construction will move the park from undeveloped site to developed community park, creating new, accessible recreation opportunities to many more people
- Grants will be explored for additional funding after master plan approval
- Transforming an undeveloped park into a developed community park will also require increased maintenance support



# Phase 1 Development

## What's included:

- Street improvements with parking, bike lane, curb, sidewalk and stormwater planters
- Paved walking loop
- Refresh existing wood chip paths and add benches
- Improved and refreshed open lawn area

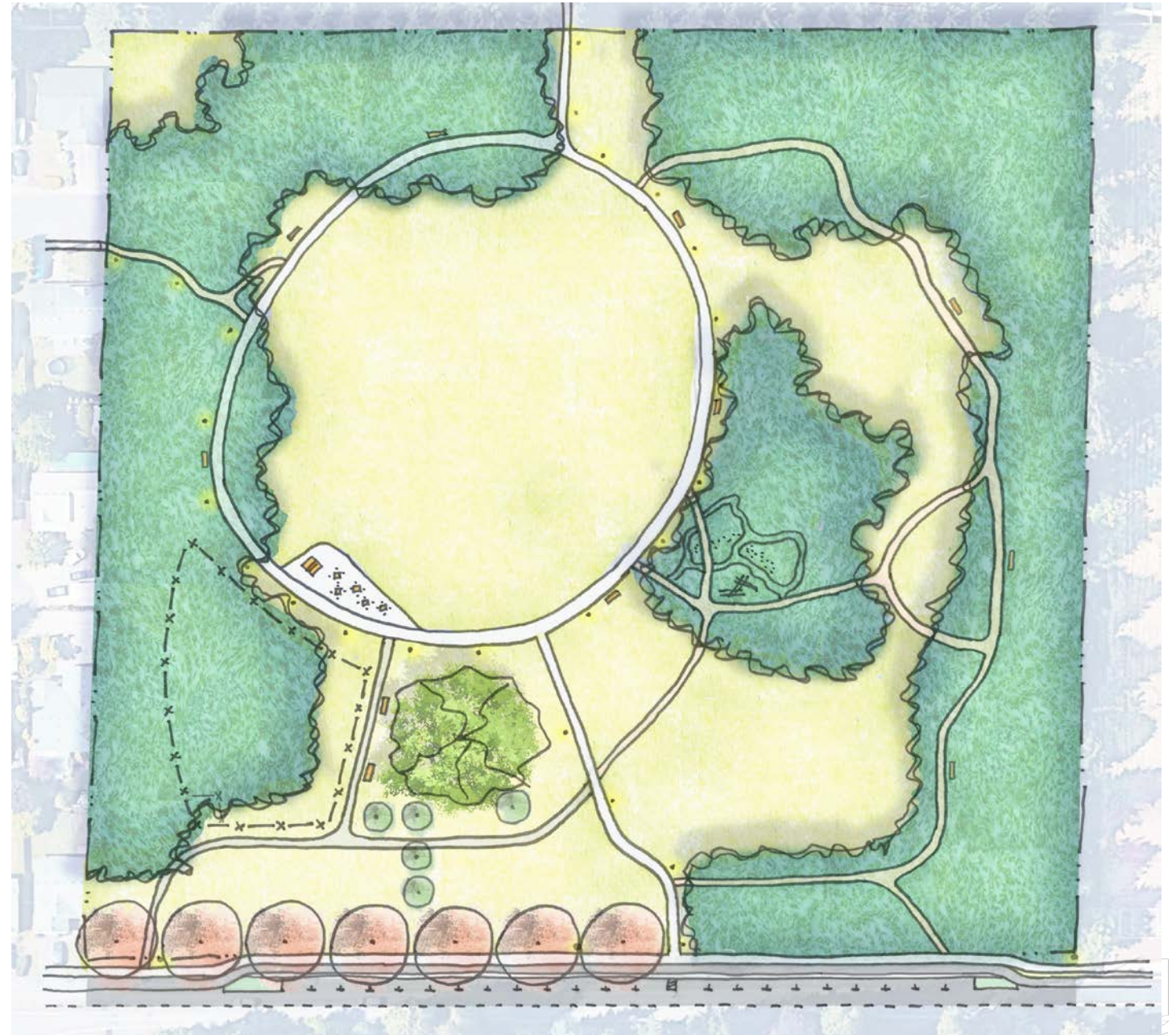


# Phase 1 Development

## What's included:

- Fenced, off-leash dog area
- Forest play
- Paved picnic area with tables

Exploring additional City funding to potentially include a Portland Loo in Phase 1



# Raymond E. Shaffer Park Development Timeline





## Discussion

Questions or comments about:

- Community engagement
- Master plan design process
- Park amenities selected to be included in Phase 1
- Budget or timeline for Phase 1
- Future funding and phases





# Motion to Approve

- Motion requested:  
**Move to approve the Raymond E. Shaffer Community Park full site master plan and corresponding phase 1 construction plan.**



# Thank You

