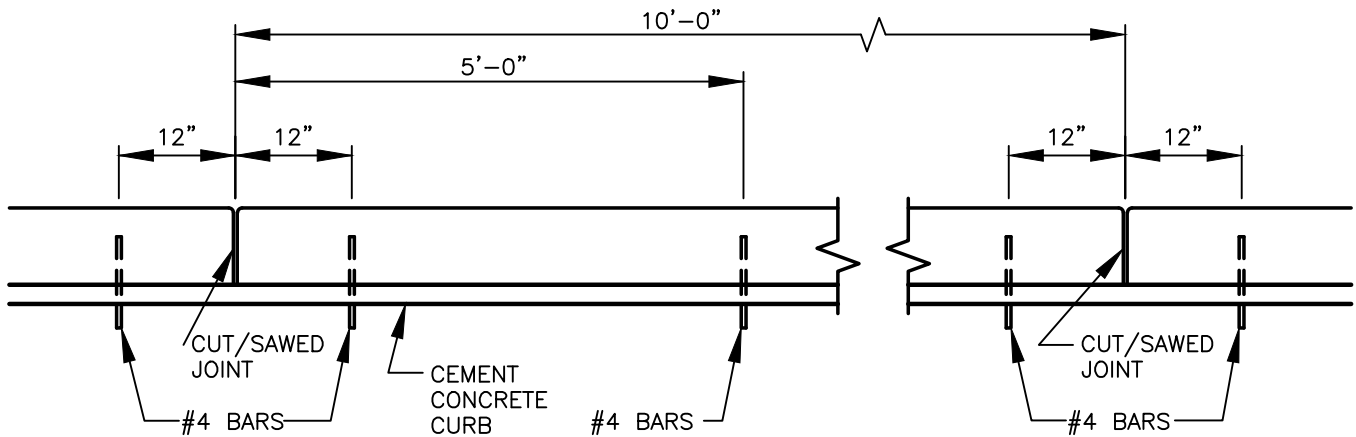


**EXTRUDED CONCRETE DOWELED CURB**



**SPACING OF ANCHOR BARS**

**NOTES:**

1. CONCRETE SHALL BE 3000 PSI MIN. (CL 3000), 3-1/2" SLUMP (MAX.).
2. FOR CONCRETE CURBS, 3/8" EXPANSION JOINTS SHALL BE PLACED ON BOTH SIDES OF CATCH BASINS, AT TOPS OF DRIVEWAYS, ALL CHANGES IN DIRECTION, OR AS DIRECTED BY INSPECTOR. 1 1/2" CONTRACTION JOINTS TO BE PLACED AT 10' INTERVALS. SEE **CONCRETE JOINTS DETAIL T05-02**.
3. THE PAVEMENT SHALL BE DRY AND CLEANED OF LOOSE AND DELETERIOUS MATERIAL PRIOR TO PLACEMENT.
4. CONTRACTOR TO PROTECT EXTRUDED CURB UNTIL FULLY CURED.
5. TO BE USED FOR TEMPORARY USE OR ENGINEERS APPROVAL.

I:\CITYAPPS\AUTOCAD\STD\_DETAILS\DRAWING\_FILES\T01-02.DWG



**EXTRUDED CONCRETE DOWELED CURB**

CITY OF VANCOUVER  
DEPARTMENT OF PUBLIC WORKS  
TRANSPORTATION DIVISION

DRAWN BY	APPROVED BY	APPROVAL DATE
CDC	<i>M.H.H.</i>	8/04
REVISION	APPROVED BY	APPROVAL DATE
7	<i>M.H.H.</i>	3/24

STD. PLAN NO.  
**T01-02**