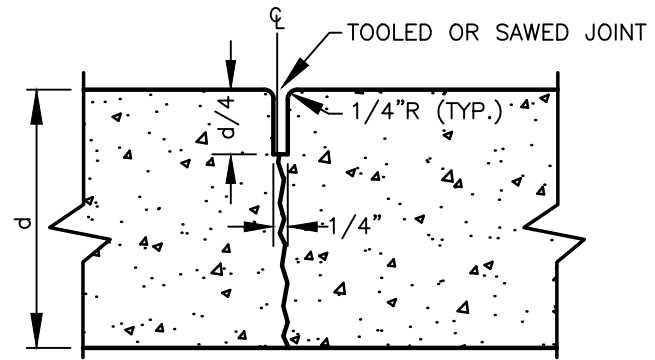
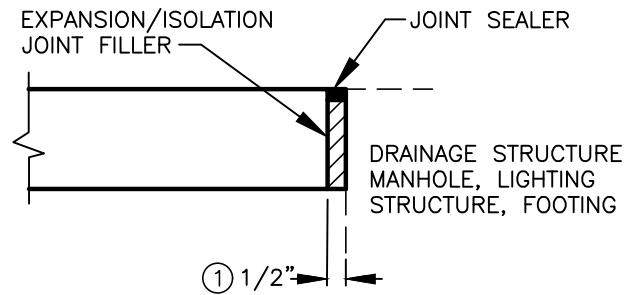


**SURFACE JOINT**

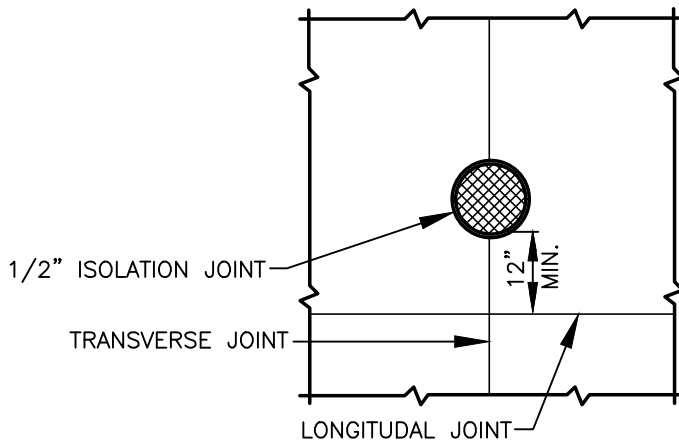


**CONTRACTION JOINT**

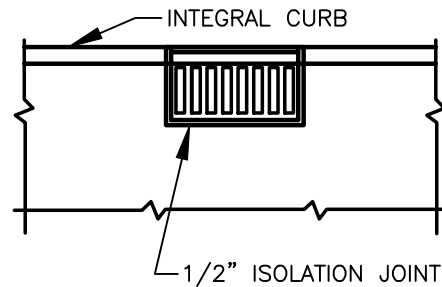


**EXPANSION/ISOLATION JOINT DETAIL**

- ① 3/8" JOINT FILLER FOR SIDEWALKS, ADA RAMPS, AND DRIVEWAYS



**MANHOLES**



**CATCH BASINS**

**NOTES:**

1. CONTRACTION JOINTS MAY BE USED IN PLACE OF SURFACE JOINTS.
2. CONSTRUCTION COLD JOINTS MAY BE USED IN PLACE OF CONTRACTION JOINTS.
3. CONCRETE PAVEMENT LOAD TRANSFER REQUIREMENTS ACROSS JOINTS SHALL BE DETERMINED BY PCC PAVEMENT DESIGN.
4. PARALLEL JOINTS SHALL BE SEPARATED BY A MINIMUM OF 2'.

I:\CITYAPPS\AUTOCAD\STD\_DETAILS\DRAWING\_FILES\T05-02.DWG



**CONCRETE JOINTS**

CITY OF VANCOUVER  
DEPARTMENT OF PUBLIC WORKS  
TRANSPORTATION DIVISION

DRAWN BY	APPROVED BY	APPROVAL DATE
CDC	<i>M.H.H.</i>	8/04
REVISION	APPROVED BY	APPROVAL DATE
7	<i>M.H.H.</i>	3/24

STD. PLAN NO.  
**T05-02**