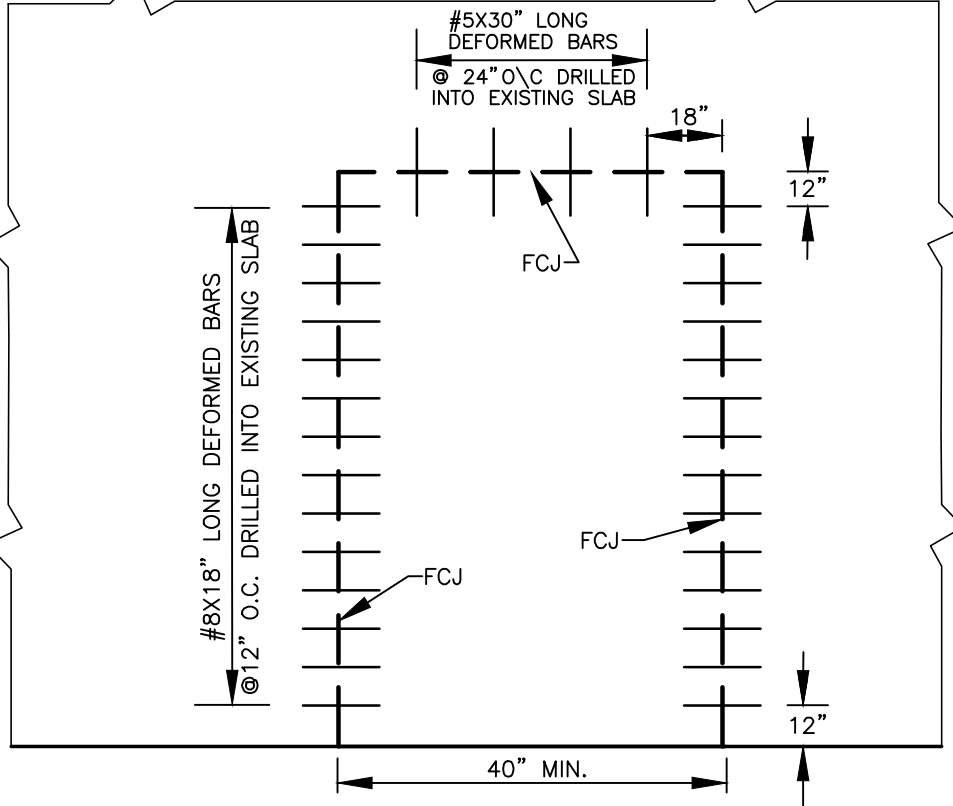


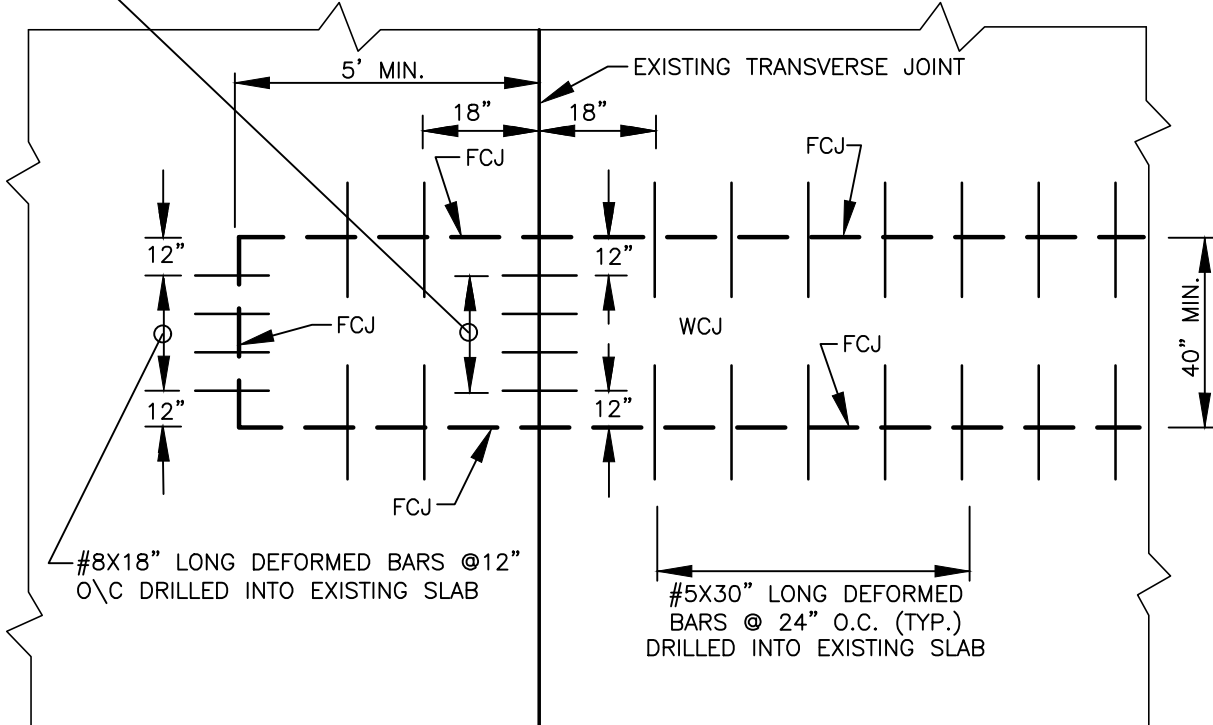
LANE DIRECTION →



STEEL LAYOUT – TRANSVERSE INTERIOR PATCH

1 1/4" DIA. X 18" LONG SMOOTH DOWELS
 @ 12" O.C. SET ON ASSEMBLY

LANE DIRECTION →



STEEL LAYOUT – LONGITUDINAL INTERIOR PATCH

STEEL LAYOUT FOR CONCRETE PATCH - INTERIOR



CITY OF VANCOUVER
 DEPARTMENT OF PUBLIC WORKS
 TRANSPORTATION DIVISION

DRAWN BY	APPROVED BY	APPROVAL DATE
CDC	<i>M.H.H.</i>	8/04
REVISION	APPROVED BY	APPROVAL DATE
7	<i>M.H.H.</i>	3/24

STD. PLAN NO.
T05-11