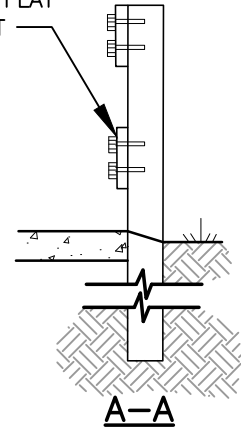


3/4" EXTERIOR PLYWOOD,
TREATED EDGE, REFLECTOR
RAILS, FASTENED WITH TWO
GALVANIZED 3/8" X 3"
LAG BOLTS (WITH FLAT
WASHER) PER POST



NOTES:

1. BARRICADES AND MARKINGS SHALL BE INSTALLED IN CONFORMANCE WITH THE MANUAL ON UNIFORM TRAFFIC CONTROL DEVICES (MUTCD) AS MODIFIED BY THE WASHINGTON STATE DEPARTMENT OF TRANSPORTATION (WSDOT).
2. THE ENTIRE AREA OF WHITE AND RED STRIPES SHALL BE REFLECTIONIZED SO AS TO BE VISIBLE UNDER NORMAL ATMOSPHERIC CONDITIONS FROM A MINIMUM DISTANCE OF 1,000 FEET WHEN ILLUMINATED BY THE LOW BEAMS OF STANDARD AUTOMOBILE HEADLIGHTS. THE BACKGROUND COLOR FOR OTHER BARRICADE COMPONENTS SHALL BE WHITE.
3. BARRICADE SECTION SHALL EXTEND ACROSS THE ENTIRE SIDEWALK AREA. THE STRIPES SHOULD BE POSITIONED TO SLOPE DOWNWARD TOWARD THE CENTER OF THE BARRICADE. RAILS SHALL BE THE SAME SIZE.
4. LUMBER SHALL BE STANDARD GRADE OR BETTER.
5. 2' MIN. CLEARANCE FROM THE EDGE OF THE TRAVEL LANE TO THE EDGE OF THE BARRICADE.

I:\CITYAPPS\AUTOCAD\STD_DETAILS\DRAWING_FILES\T07-06B.DWG



TYPE II BARRICADE

CITY OF VANCOUVER
DEPARTMENT OF PUBLIC WORKS
TRANSPORTATION DIVISION

DRAWN BY	APPROVED BY	APPROVAL DATE
CDC	<i>M.H.H.</i>	3/24
REVISION	APPROVED BY	APPROVAL DATE
1	<i>M.H.H.</i>	3/24

STD. PLAN NO.
T07-06B