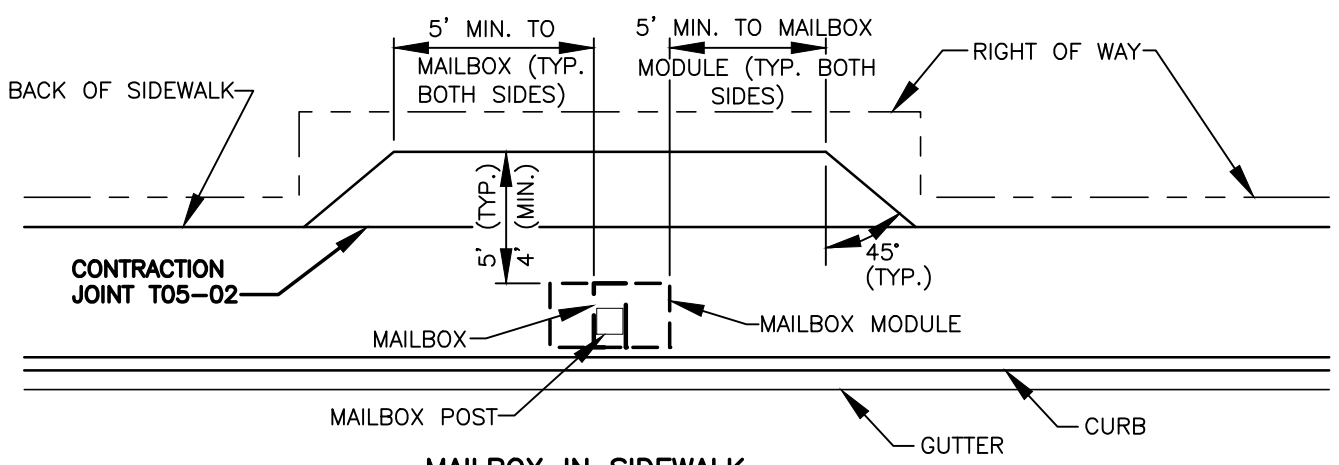
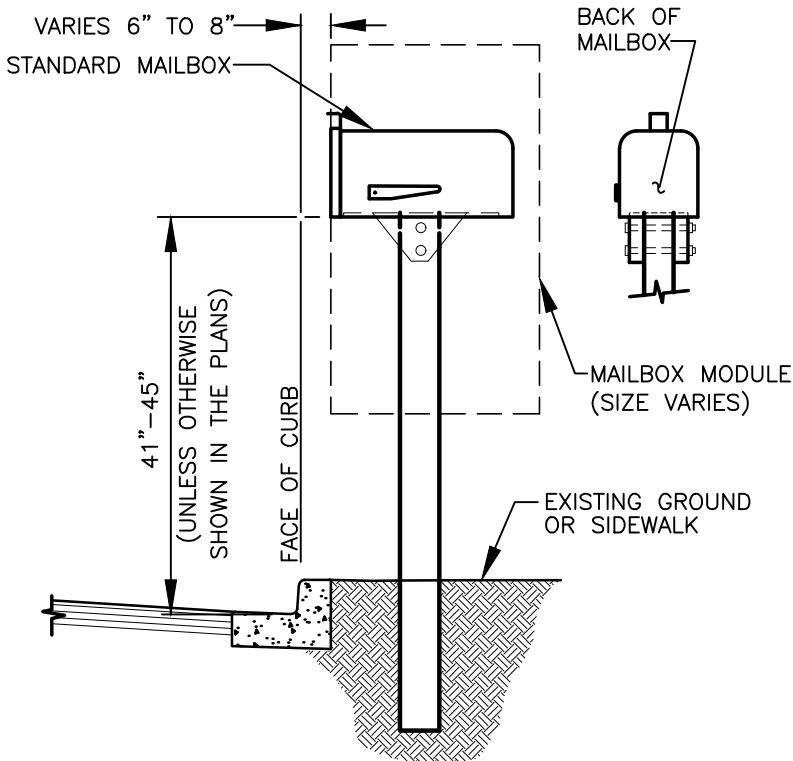


**MAILBOX IN PLANTER STRIP**



**MAILBOX IN SIDEWALK**



**NOTES:**

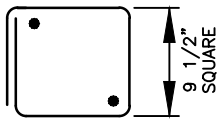
1. SEE WSDOT STANDARD PLAN H-70.10-xx TO H-70.30-xx FOR MAILBOX, POST, BRACKET AND OTHER INSTALLATION DETAILS.
2. MAILBOXES MUST BE POSTMASTER APPROVED.
3. LOCATION OF MAILBOXES ARE SUBJECT TO APPROVAL BY ENGINEER FOR ACCESS AND SIGHT DISTANCE REQUIREMENTS SEE **INTERSECTION SIGHT DISTANCE REQUIREMENTS DETAIL T04-03** AND **VISION CLEARANCE TRIANGLE DETAIL T04-04**.
4. INSTALL EXPANSION JOINT MATERIAL AROUND MAILBOX POST WHEN SET IN SIDEWALK.
5. EXTEND SIDEWALK JOINTS THROUGH WIDENED SIDEWALK SECTION.
6. RESIDENTIAL ACCESS TO MODULE MAILBOX WILL BE ON SIDEWALK SIDE.

I:\CITYAPPS\AUTOCAD\STD\_DETAILS\DRAWING\_FILES\T07-01.DWG



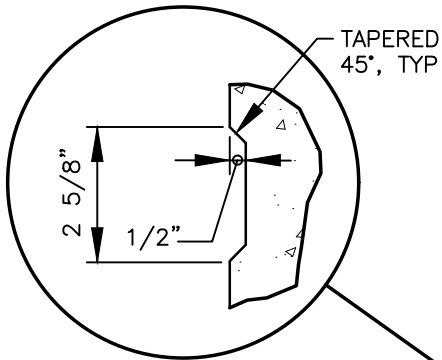
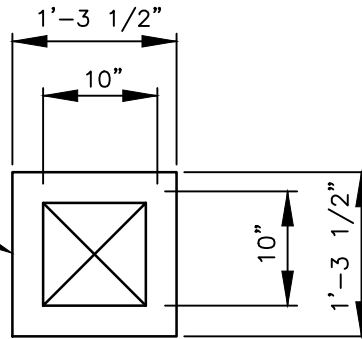
**TYPICAL MAILBOX PLACEMENT**

CITY OF VANCOUVER DEPARTMENT OF PUBLIC WORKS TRANSPORTATION DIVISION			DRAWN BY CDC	APPROVED BY 	APPROVAL DATE 8/04	STD. PLAN NO. <b>T07-01</b>
			REVISION 7	APPROVED BY 	APPROVAL DATE 3/24	



**1-#4 BAR WRAPPED**

FOOTING



6" DIA. CIRCLE RECESSED

3/4" SCH. 40 STEEL PIPE, 1.05" O.D. x 4'-0".  
PRECAST 2'-0" INTO BOLLARD

4-#4 BAR TYP HOLD IN 2" ALL SIDES

CONCRETE WITH SAND BLAST FINISH

SEE PLANS FOR TYPE OF MATERIAL

**EXPANSION JOINT T05-02**

POUR TOP OF FOOTING  
LEVEL WITH FINISH GRADE,  
WITH SMOOTH TROWEL  
FINISH AND WITH 1/4"  
RADIUS EDGES

EPOXY BOND UNDER BOLLARD (TYP.)

1-#4 BAR WRAPPED (SEE DETAIL ABOVE)

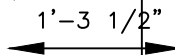
1 1/4" SCH. 80 PVC PIPE SLEEVE,  
(1.278" I.D.) x 2'-6". INSTALL TRUE VERTICAL

2-#4 BAR X 2'-0"

3" CLEAR

4" MIN. DEPTH CRUSHED  
SURFACING TOP COURSE

COMPACT SUBGRADE AND CRUSHED  
SURFACING TOP COURSE TO 95%  
MAXIMUM DRY DENSITY



**NOTE:**

BOLLARD IS DESIGNED TO BE FIXED BUT REPLACEABLE. FOR REMOVABLE BOLLARD, OMIT EPOXY BOND.

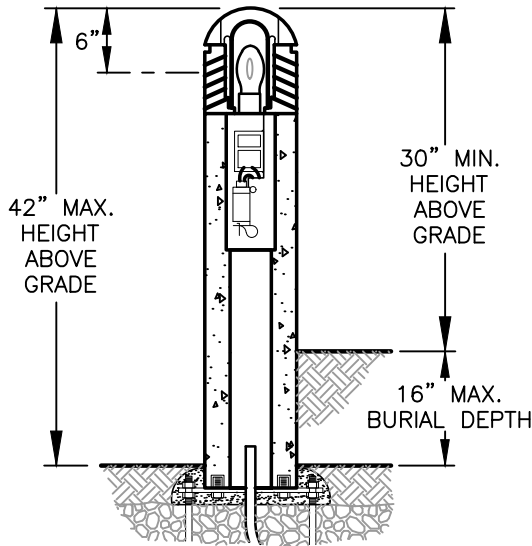
**PRECAST CONCRETE BOLLARD**



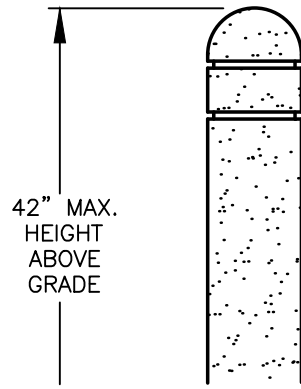
CITY OF VANCOUVER  
DEPARTMENT OF PUBLIC WORKS  
TRANSPORTATION DIVISION

DRAWN BY	APPROVED BY	APPROVAL DATE
CDC	<i>M.H.H.</i>	8/04
REVISION	APPROVED BY	APPROVAL DATE
7	<i>M.H.H.</i>	3/24

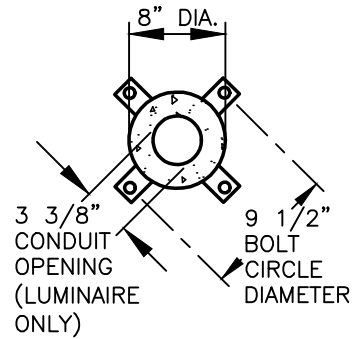
STD. PLAN NO.  
**T07-02**



**SINGLE FUNCTION LUMINAIRE**  
CONCRETE SHAFT



**BOLLARD**  
CONCRETE SHAFT



**BASE PLAN**

**NOTES:**

1. CERTIFICATION SHALL BE UNDERWRITERS LABORATORIES LISTED FOR 120 AND 240 VOLT WET LOCATIONS.
2. TOP CAP SHALL BE A ONE PIECE ALUMINUM CASTING 3/16" MINIMUM THICKNESS, SECURED TO LOUVERS BY CONCEALED ALLEN SCREWS IN KEYHOLE SLOTS. FOR RE-LAMPING ACCESS, ALLEN SCREWS SHALL NOT REQUIRE COMPLETE REMOVAL.
3. LOUVERS SHALL BE A ONE PIECE ALUMINUM CASTING WITH VERTICAL SUPPORT RIBS AT 90° INTERVALS. HORIZONTAL LOUVER BLADES SHALL HAVE A 1 3/4" DEPTH, A 65° UPWARD PITCH AND PROVIDE LIGHT SOURCE CUTOFF ABOVE HORIZONTAL. LOUVER CASTING SHALL BE SECURED TO SHAFT BY FOUR INTERNAL TIE RODS.
4. LAMP ENCLOSURE SHALL BE ONE PIECE TEMPERED MOLDED GLASS WITH INTERNAL FLUTES AND FULL GASKETING AT BOTTOM EDGE.
5. SOCKET SHALL BE PORCELAIN MEDIUM BASE RATED 4KV.
6. FIXTURE HEAD SHALL ALLOW FLOW-THROUGH VENTILATION AROUND AND ABOVE THE LAMP ENCLOSURE.
7. SHAFT CEMENT SHALL CONFORM TO CURRENT SPECIFICATIONS FOR "PORTLAND CEMENT." ASTM C150, TYPE I OR II. AGGREGATES SHALL MEET CURRENT REQUIREMENTS OF "SPECIFICATIONS FOR CONCRETE AGGREGATES," ASTM C33. WATER SHALL BE CLEAN AND FREE FROM DELETERIOUS AMOUNTS OF SILT, OIL, ACIDS, ALKALIES OR ORGANIC MATERIALS. WIRE FOR REINFORCEMENT SHALL CONFORM TO ASTM A185. STEEL FOR LUGS AND PLATES SHALL CONFORM TO ASTM A36, OR A283 GRADE D.
8. BALLAST SHALL BE HIGH POWER FACTOR FOR -20°F STARTING, FACTORY MOUNTED TO A RIGID HARNESS FOR FIELD WIRING AND SUSPENSION FROM FIXTURE WITHIN THE CONCRETE SHAFT.
9. ANCHOR BOLTS SHALL BE FOUR 3/8" X 10" + 2" ZINC PLATED L-HOOKS, EACH WITH TWO NUTS, WASHERS AND A RIGID PRESSED BOARD TEMPLATE.
10. FINISH SHALL BE T.G.I.C. THERMOSET POLYESTER POWDER-COAT PAINT APPLIED OVER A CHROMATE CONVERSION COATING. NATURAL GRAY SHALL BE USED FOR THE CONCRETE COLOR FINISH. LUMINAIRE FINISH SHALL BE BLACK.
11. SURFACE SHALL BE MEDIUM SAND-BLASTED WITH ANTI-GRAFFITI SEALER. COLOR SHALL BE NATURAL GRAY OR INTEGRAL IN CONCRETE MIX.
12. CURE AND STRENGTH SHALL ALLOW FOR COMPLETION OF THE HYDRATION PROCESS, AND RESULT IN A 28 DAY COMPRESSIVE STRENGTH OF NOT LESS THAN 4,500 PSI.
13. MANUFACTURE SHALL BE BY FIBERGLASS MOLDS TO INSURE UNIFORM PARTS. MOLD PARTING LINES MAY BE SLIGHTLY VISIBLE IN FINISHED PARTS.
14. ANCHORAGE SHALL BE BY FOUR STEEL MOUNTING TABS FOR INSTALLATION ON FOUR 1/2" X 10" + 2" ZINC ELECTROPLATED L-HOOK ANCHOR BOLTS. EACH ANCHOR BOLT IS SUPPLIED WITH TWO NUTS, TWO WASHERS, AND A RIGID PRESSED BOARD TEMPLATE.
15. ELECTRICAL MODULE SHALL BE 100 WATT COATED 120 LINE VOLTS, 129 LINE WATTS AND 1.15 MAX. AMPS.
16. SHIPMENT SHALL BE PALLETIZED WITH ADEQUATE HOLD-DOWNS TO PREVENT LOAD MOVEMENT IN TRANSIT.
17. **KIM LIGHTING MODEL. SEE CITY'S APPROVED PRODUCTS LIST FOR PART NUMBER.**
18. SEE **TYPICAL CONNECTING PUBLIC STREET WITH PATHWAYS AND LIGHTING DETAIL T07-03B** FOR ADDITIONAL INFORMATION.

I:\CITYAPPS\AUTOCAD\STD\_DETAILS\DRAWING\_FILES\T07-03A.DWG



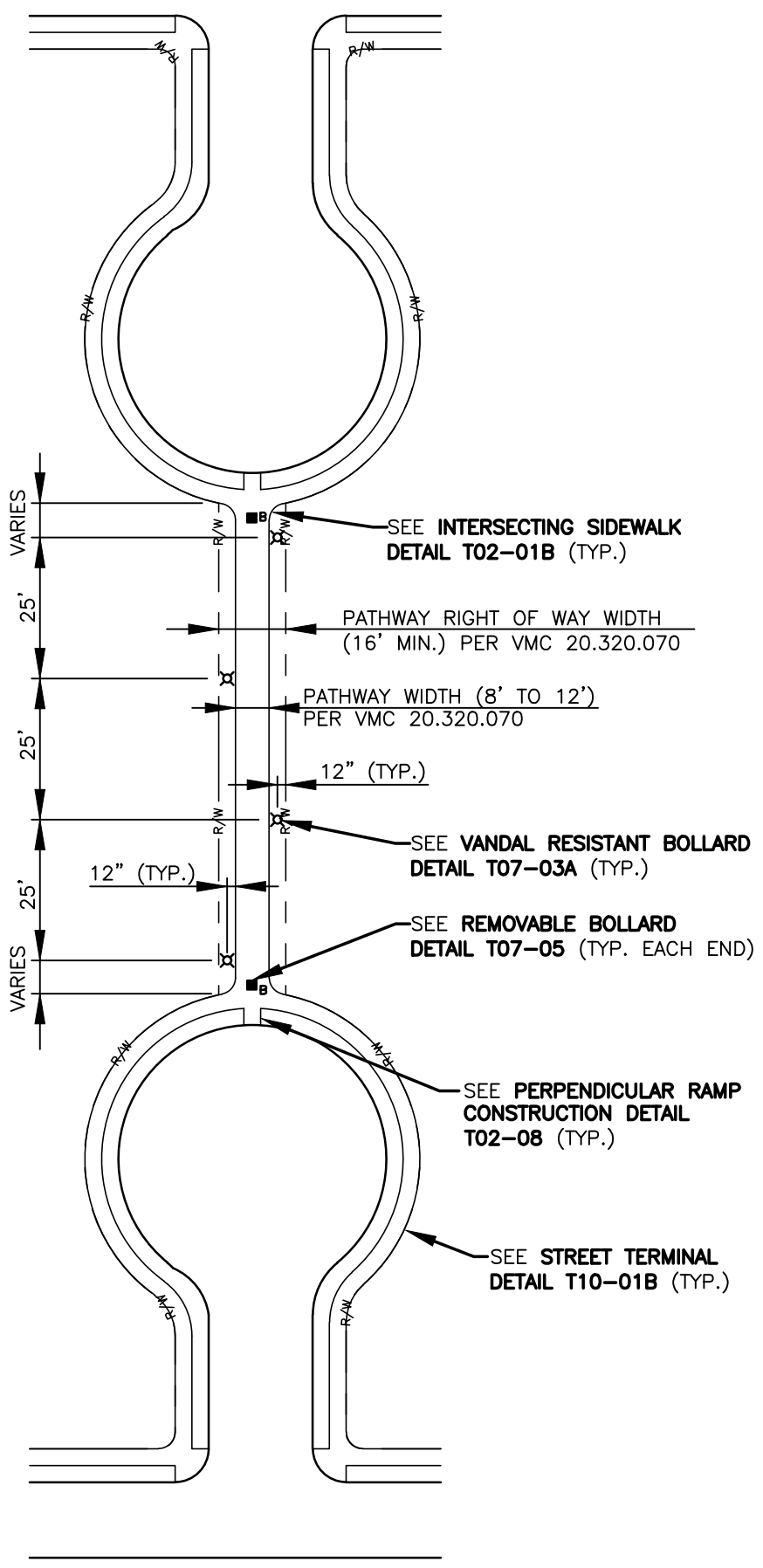
**VANDAL RESISTANT BOLLARD (LIGHTED AND NON-LIGHTED)**

CITY OF VANCOUVER  
DEPARTMENT OF PUBLIC WORKS  
TRANSPORTATION DIVISION

DRAWN BY	APPROVED BY	APPROVAL DATE
CDC	<i>MAHE</i>	2/07
REVISION	APPROVED BY	APPROVAL DATE
6	<i>MAHE</i>	3/24

STD. PLAN NO.  
**T07-03A**

I:\CITYAPPS\AUTOCAD\STD\_DETAILS\DRAWING\_FILES\T07-03B.DWG

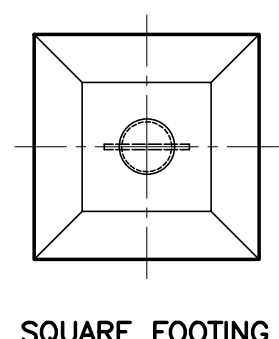
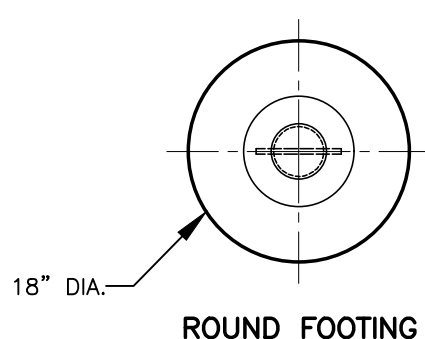
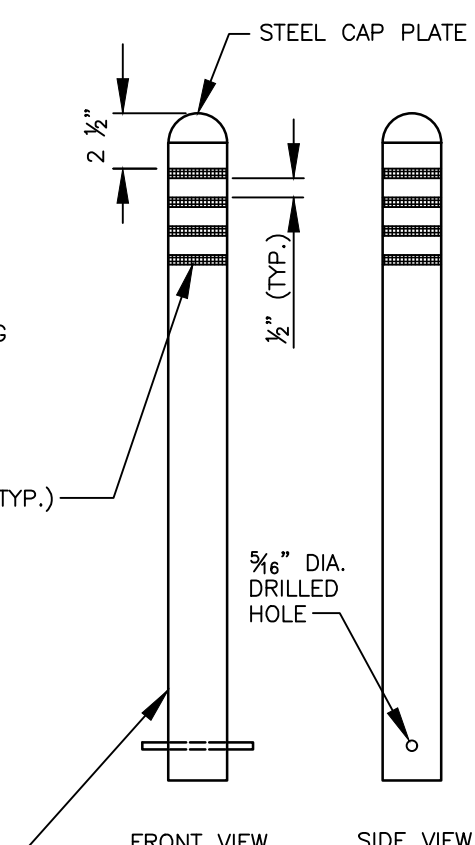
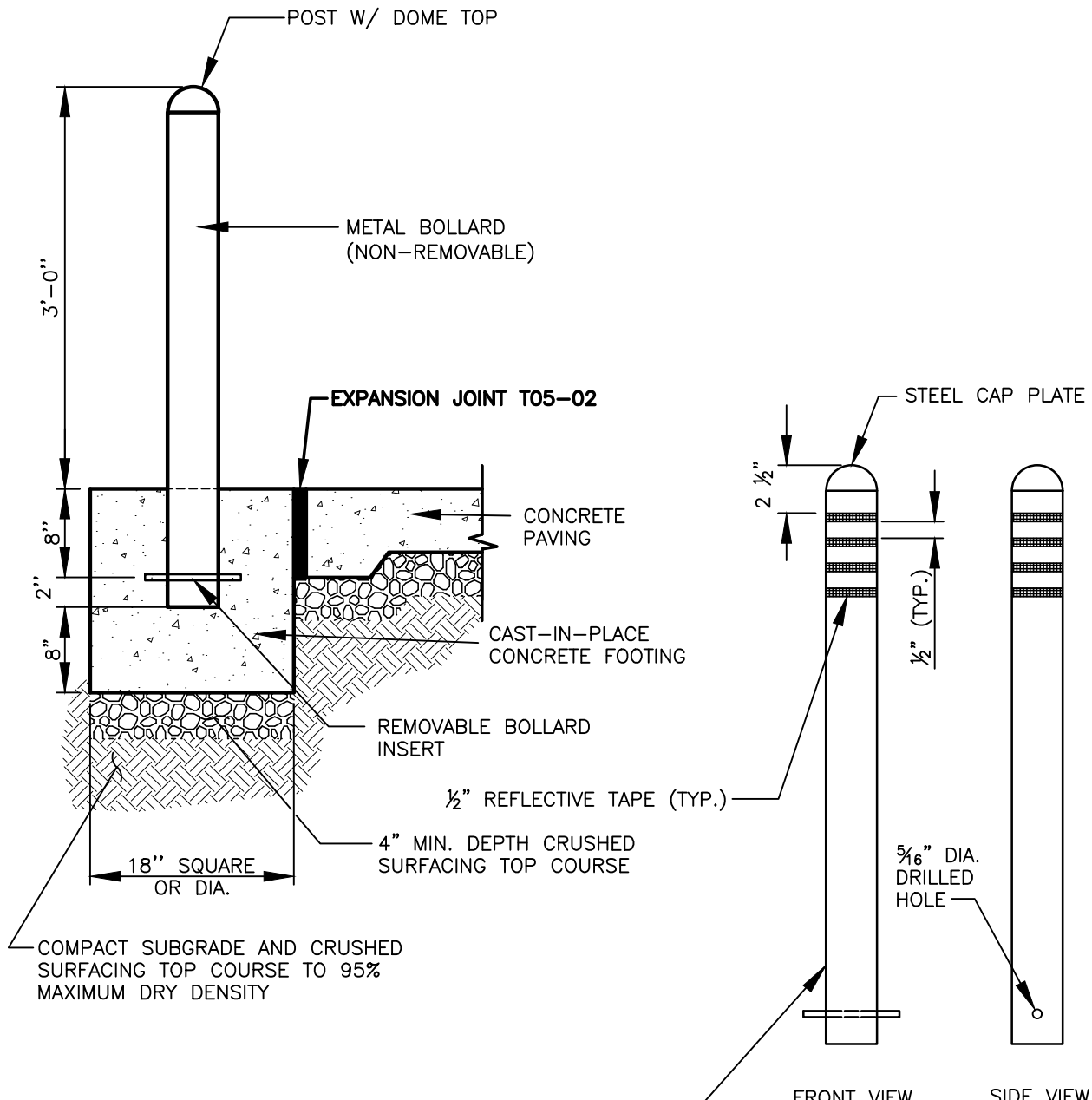


**TYPICAL CONNECTING PUBLIC STREET WITH PATHWAYS AND LIGHTING**

CITY OF VANCOUVER  
DEPARTMENT OF PUBLIC WORKS  
TRANSPORTATION DIVISION

DRAWN BY	APPROVED BY	APPROVAL DATE
CDG	<i>M.H.H.</i>	2/07
REVISION	APPROVED BY	APPROVAL DATE
5	<i>M.H.H.</i>	3/24

STD. PLAN NO.  
**T07-03B**



STEEL PIPE ~ ASTM A 53,  
NPS 3 (3" NOM.),  
SCHEDULE 80

I:\CITYAPPS\AUTOCAD\STD\_DETAILS\DRAWING\_FILES\T07-04.DWG



**TYPE 2 BOLLARD**

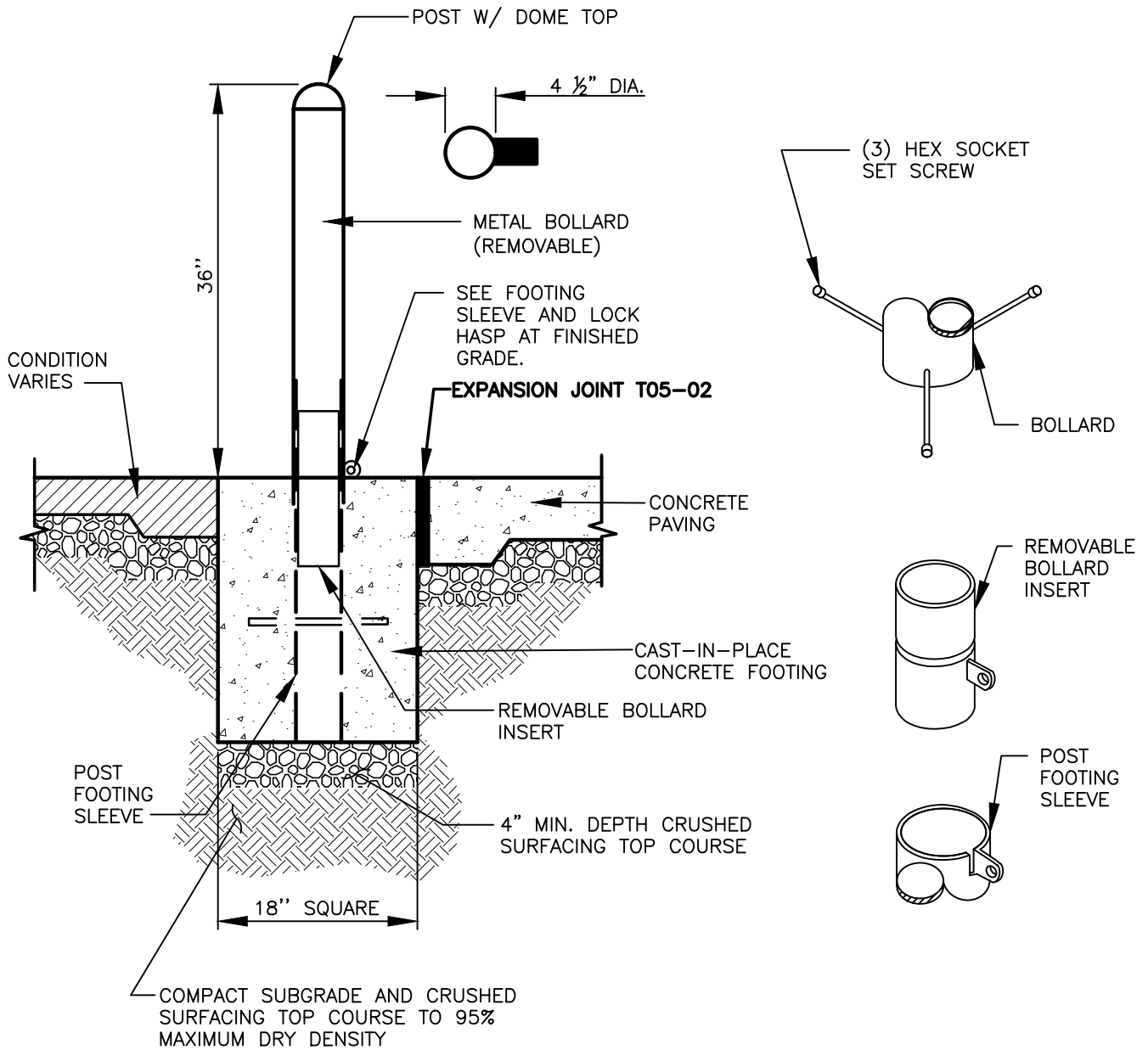
CITY OF VANCOUVER  
DEPARTMENT OF PUBLIC WORKS  
TRANSPORTATION DIVISION

DRAWN BY	APPROVED BY	APPROVAL DATE
CDC	<i>M.H.H.</i>	3/06
REVISION	APPROVED BY	APPROVAL DATE
7	<i>M.H.H.</i>	3/24

STD. PLAN NO.  
**T07-04**

**INSTALLATION SEQUENCE**

1. DIG FOOTING HOLE AND SET POST FOOTING SLEEVE PLUMB AND SQUARE IN CONCRETE.
2. INSERT REMOVABLE BOLLARD INSERT INTO BOLLARD.
3. TIGHTEN HEX SOCKET SET SCREWS.
4. SET THE BOLLARD AND REMOVABLE BOLLARD INSERT INTO THE POST FOOTING SLEEVE.



I:\CITYAPPS\AUTOCAD\STD\_DETAILS\DRAWING\_FILES\T07-05.DWG

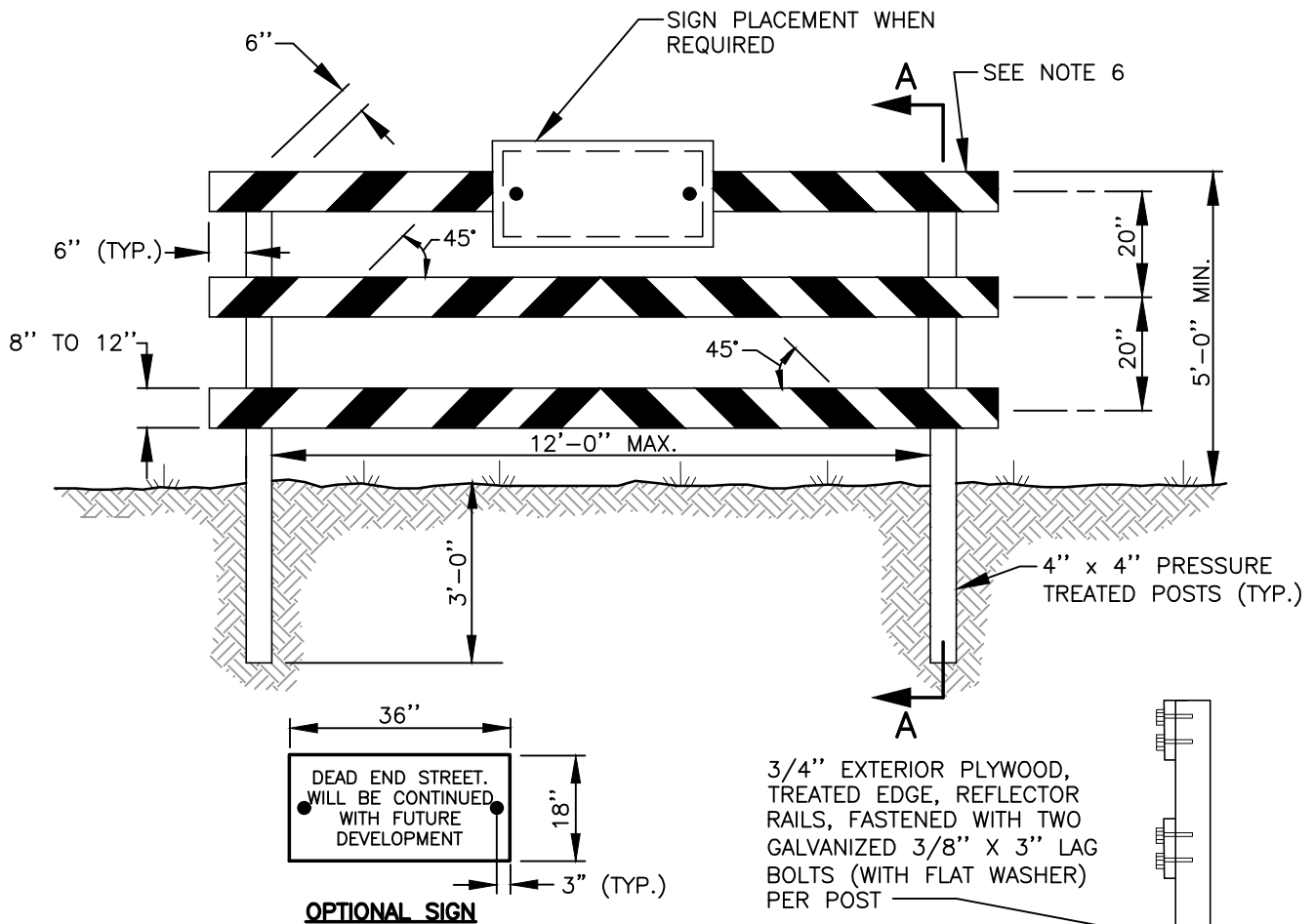


**REMOVABLE BOLLARD**

CITY OF VANCOUVER  
DEPARTMENT OF PUBLIC WORKS  
TRANSPORTATION DIVISION

DRAWN BY	APPROVED BY	APPROVAL DATE
CDC	<i>M.H.H.</i>	3/06
REVISION	APPROVED BY	APPROVAL DATE
7	<i>M.H.H.</i>	3/24


STD. PLAN NO.  
**T07-05**

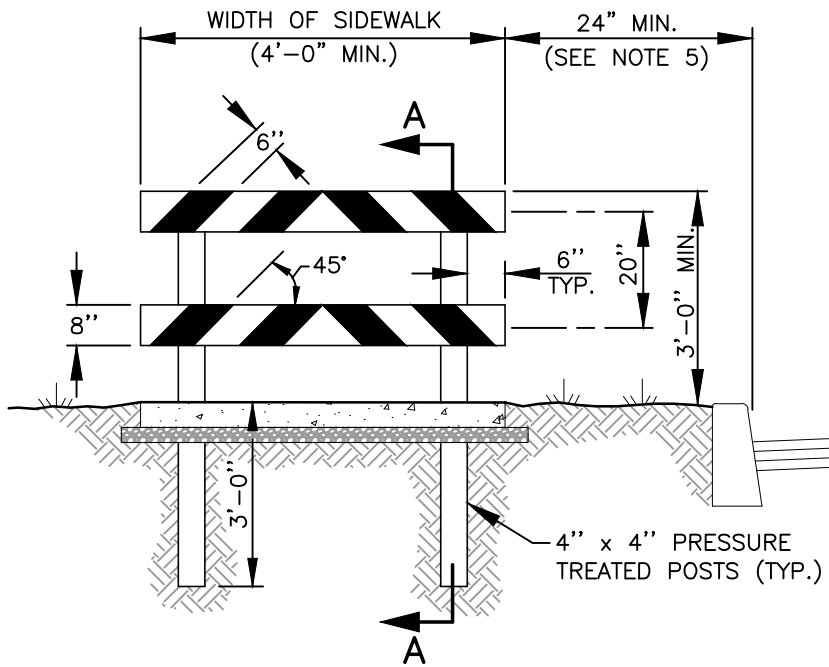


**NOTES:**

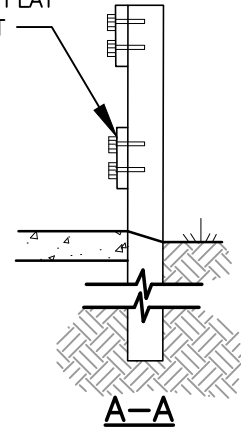
1. BARRICADES AND MARKINGS SHALL BE INSTALLED IN CONFORMANCE WITH THE MANUAL ON UNIFORM TRAFFIC CONTROL DEVICES (MUTCD) AS MODIFIED BY THE WASHINGTON STATE DEPARTMENT OF TRANSPORTATION (WSDOT).
2. THE ENTIRE AREA OF WHITE AND RED STRIPES SHALL BE REFLECTIONIZED SO AS TO BE VISIBLE UNDER NORMAL ATMOSPHERIC CONDITIONS FROM A MINIMUM DISTANCE OF 1,000 FEET WHEN ILLUMINATED BY THE LOW BEAMS OF STANDARD AUTOMOBILE HEADLIGHTS. THE BACKGROUND COLOR FOR OTHER BARRICADE COMPONENTS SHALL BE WHITE.
3. BARRICADE SECTION SHALL EXTEND ACROSS THE ENTIRE STREET AREA. WHERE BARRICADE EXTENDS ENTIRELY ACROSS A ROADWAY, THE STRIPES SHALL SLOPE DOWNWARD IN THE DIRECTION TOWARD WHICH TRAFFIC MUST TURN IN DETOURING. WHERE BOTH RIGHT AND LEFT TURNS ARE ALLOWED, THE CHEVRON STRIPING SHALL SLOPE DOWNWARD IN BOTH DIRECTIONS FROM THE CENTER OF THE BARRICADE. WHERE NO TURNS ARE INTENDED, THE STRIPES SHOULD BE POSITIONED TO SLOPE DOWNWARD TOWARD THE CENTER OF THE BARRICADE OR BARRICADES. RAILS SHALL BE PLACED BOTH FRONT AND BACK OF BARRICADE IF REQUIRED FOR TWO-WAY TRAFFIC. WHERE NO TURNS ARE INTENDED, THE STRIPES SHOULD BE POSITIONED TO SLOPE DOWNWARD TOWARD THE CENTER OF THE BARRICADE OR BARRICADES. RAILS SHALL BE THE SAME SIZE. FOR WIDER APPLICATIONS, MULTIPLE SECTIONS, SPACED NO FURTHER THAN 4" SHALL BE USED.
4. RAILS SHALL BE PLACE BOTH FRONT AND BACK OF BARRICADE IF REQUIRED FOR TWO-WAY TRAFFIC. RAILS SHALL BE THE SAME SIZE.
5. LUMBER SHALL BE STANDARD GRADE OR BETTER.
6. IF A SIGN IS REQUIRED, FIELD DRILL TWO HOLES TO ACCOMMODATE GALVANIZED 3/8" MACHINE BOLT, WASHER AND NUT. THE SIGN SHALL BE INSTALLED SO THAT THE CENTER RAIL IS NOT COVERED.
7. FOR TEMPORARY BARRIER SEE WSDOT STANDARD PLAN H-2.
8. 2' MIN. CLEARANCE FROM THE EDGE OF THE TRAVEL LANE TO THE EDGE OF THE BARRICADE.

I:\CITYAPPS\AUTOCAD\STD\_DETAILS\DRAWING\_FILES\T07-06A.DWG

	<b>TYPE III BARRICADE</b>			STD. PLAN NO. <b>T07-06A</b>
	CITY OF VANCOUVER DEPARTMENT OF PUBLIC WORKS TRANSPORTATION DIVISION		DRAWN BY CDC	
	REVISION <b>4</b>	APPROVAL DATE <b>3/24</b>	APPROVAL DATE <b>8/08</b>	



3/4" EXTERIOR PLYWOOD,  
TREATED EDGE, REFLECTOR  
RAILS, FASTENED WITH TWO  
GALVANIZED 3/8" X 3"  
LAG BOLTS (WITH FLAT  
WASHER) PER POST



**NOTES:**

1. BARRICADES AND MARKINGS SHALL BE INSTALLED IN CONFORMANCE WITH THE MANUAL ON UNIFORM TRAFFIC CONTROL DEVICES (MUTCD) AS MODIFIED BY THE WASHINGTON STATE DEPARTMENT OF TRANSPORTATION (WSDOT).
2. THE ENTIRE AREA OF WHITE AND RED STRIPES SHALL BE REFLECTIONIZED SO AS TO BE VISIBLE UNDER NORMAL ATMOSPHERIC CONDITIONS FROM A MINIMUM DISTANCE OF 1,000 FEET WHEN ILLUMINATED BY THE LOW BEAMS OF STANDARD AUTOMOBILE HEADLIGHTS. THE BACKGROUND COLOR FOR OTHER BARRICADE COMPONENTS SHALL BE WHITE.
3. BARRICADE SECTION SHALL EXTEND ACROSS THE ENTIRE SIDEWALK AREA. THE STRIPES SHOULD BE POSITIONED TO SLOPE DOWNWARD TOWARD THE CENTER OF THE BARRICADE. RAILS SHALL BE THE SAME SIZE.
4. LUMBER SHALL BE STANDARD GRADE OR BETTER.
5. 2' MIN. CLEARANCE FROM THE EDGE OF THE TRAVEL LANE TO THE EDGE OF THE BARRICADE.

I:\CITYAPPS\AUTOCAD\STD\_DETAILS\DRAWING\_FILES\T07-06B.DWG



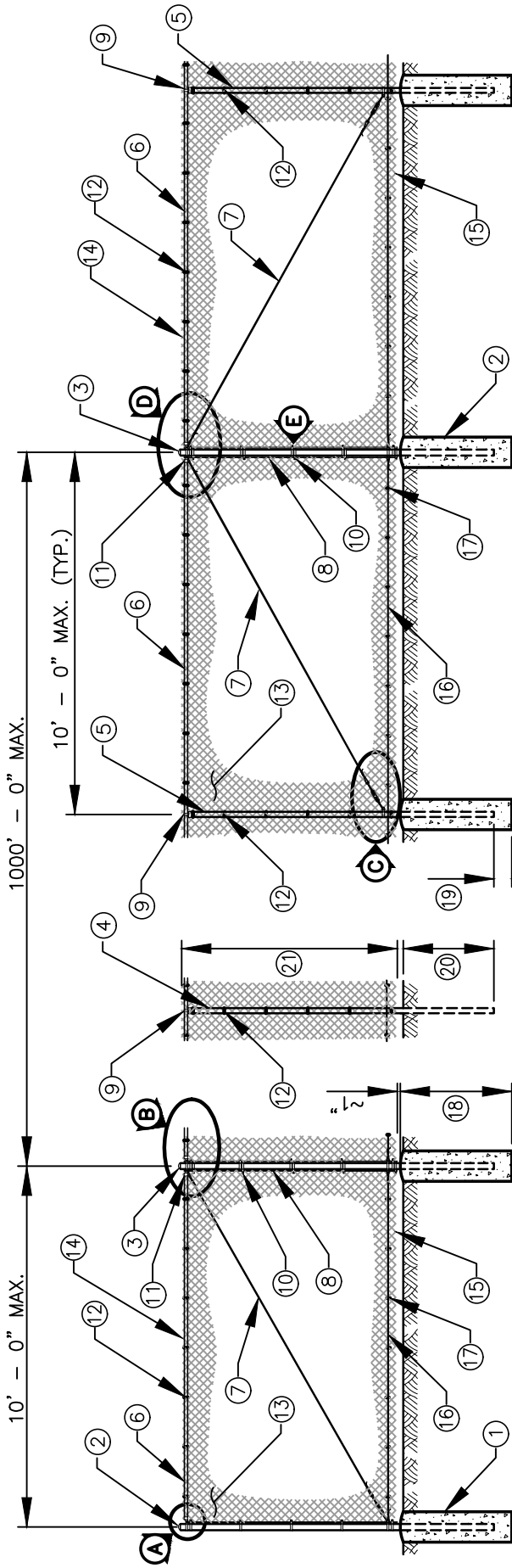
**TYPE II BARRICADE**

CITY OF VANCOUVER  
DEPARTMENT OF PUBLIC WORKS  
TRANSPORTATION DIVISION

DRAWN BY	APPROVED BY	APPROVAL DATE
CDC	<i>M.H.H.</i>	3/24
REVISION	APPROVED BY	APPROVAL DATE
1	<i>M.H.H.</i>	3/24

STD. PLAN NO.  
**T07-06B**





**POST AND RAIL SPECIFICATIONS**

POST	PIPE
	NOM. SIZE (SCH. 40) I.D.
END, CORNER, OR PULL POST	2 1/2" DIAM.
LINE OR BRACE POST	2" DIAM.
TOP RAIL POST	1 1/4" DIAM.

**NOTES:**

- ALL CONCRETE POST BASES SHALL BE 10" (IN) MINIMUM DIAMETER.
- ALONG THE TOP AND BOTTOM, USING HOG RINGS, FASTEN THE CHAIN LINK FENCE FABRIC TO THE TENSION WIRE WITHIN THE LIMITS OF THE FIRST FULL FABRIC WEAVE.
- DETAILS ARE ILLUSTRATIVE AND SHALL NOT LIMIT HARDWARE DESIGN OR POST SELECTION OF ANY PARTICULAR FENCE TYPE.
- FENCING SHALL BE USED FOR SECURITY AND BOUNDARY DELINEATION ONLY.
- ALL FENCE MATERIAL SHALL BE BLACK VINYL COATED.
- SEE **CHAIN LINK FENCE BLOW-UP DETAILS ON T07-07B.**

- CONCRETE POST BASE (TYP.)
- END OR CORNER POST AND CAP (TYP.)
- PULL POST - SPACED AT 1,000' (FT.) MAX. (TYP.)
- LINE POST - SPACED AT ~10' (FT.) MAX. (TYP.)
- BRACE POST (TYP.)
- TOP RAIL
- TENSION WIRE
- STRETCHER BAR (TYP.)
- FENCE POST LOOP CAP
- FABRIC BAND (TYP.)
- FENCE RAIL END (TYP.)
- TIE WIRE (TYP.)
- CHAIN LINK FENCE FABRIC (TYP.)
- TWISTED SELVAGE (TYP.)
- TWISTED KNUCKLED SELVAGE (TYP.)
- TENSION WIRE ALONG BOTTOM OF FENCE (TYPE 3 FENCE ONLY) (TYP.)
- HOG RINGS (TYPE 3 FENCE ONLY) SPACED AT 24" (IN.) MAX. (TYP.)
- POST BASE DEPTH:  
TYPE 3 FENCE = 3'-0" (TYP.)  
TYPE 4 FENCE = 2'-0" (TYP.)
- CONCRETE DEPTH BELOW POST:  
TYPE 3 FENCE = 0'-6" (TYP.)  
TYPE 4 FENCE = 0'-2" (TYP.)
- LINE POST DEPTH:  
TYPE 3 FENCE = 2'-6" (TYP.)  
TYPE 4 FENCE = 1'-10" (TYP.)
- FABRIC HEIGHT:  
TYPE 3 FENCE = 6'-0" (TYP.)  
TYPE 4 FENCE = 4'-0" (TYP.)

**CHAIN LINK FENCE TYPES 3 AND 4**

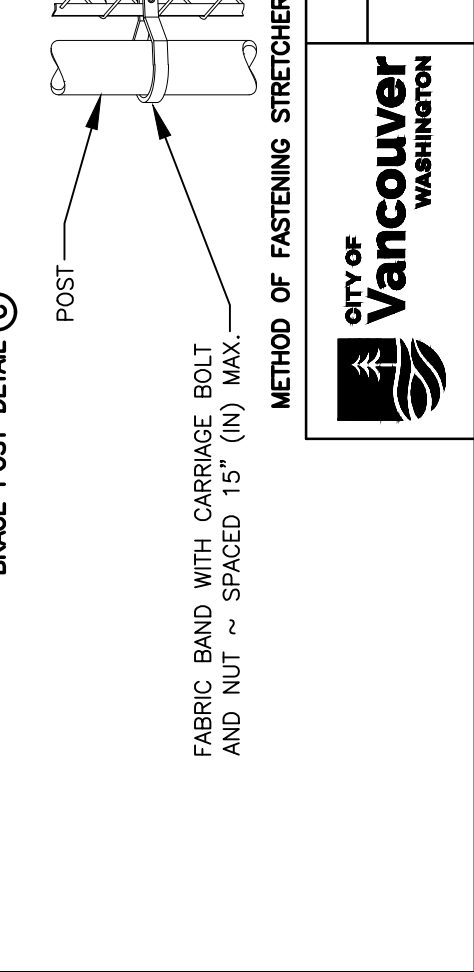
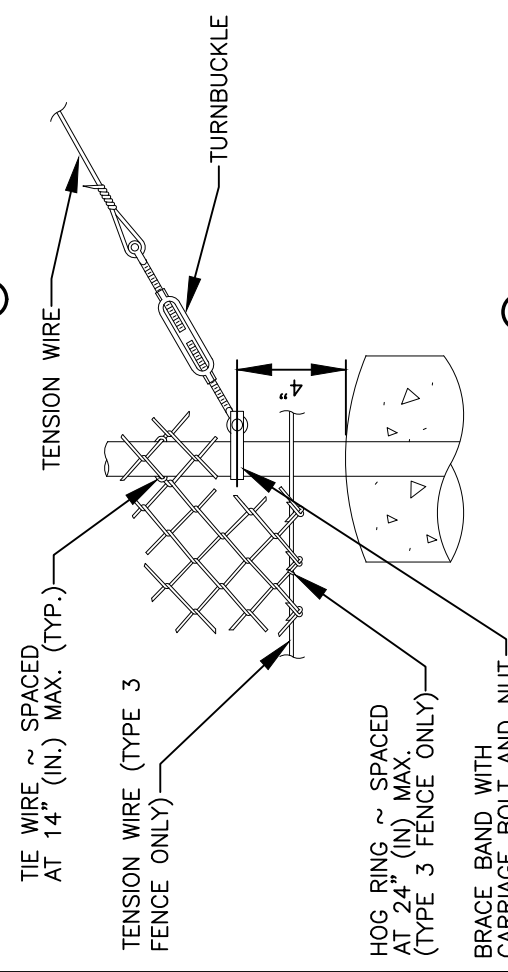
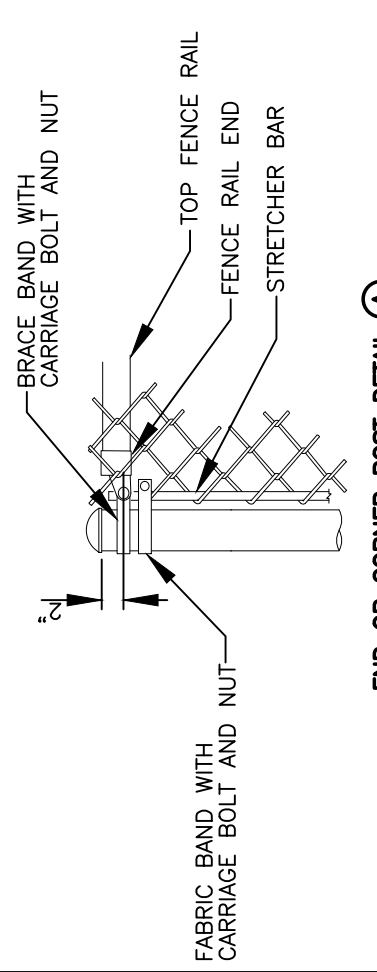
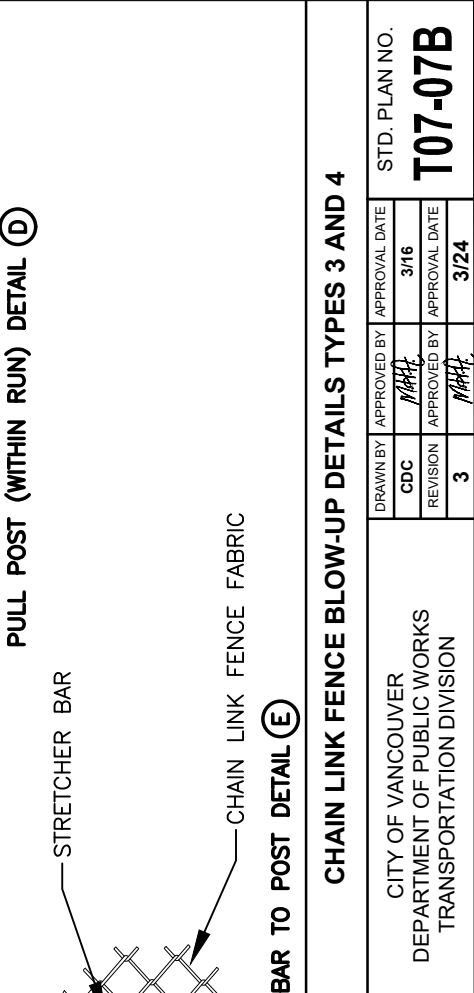
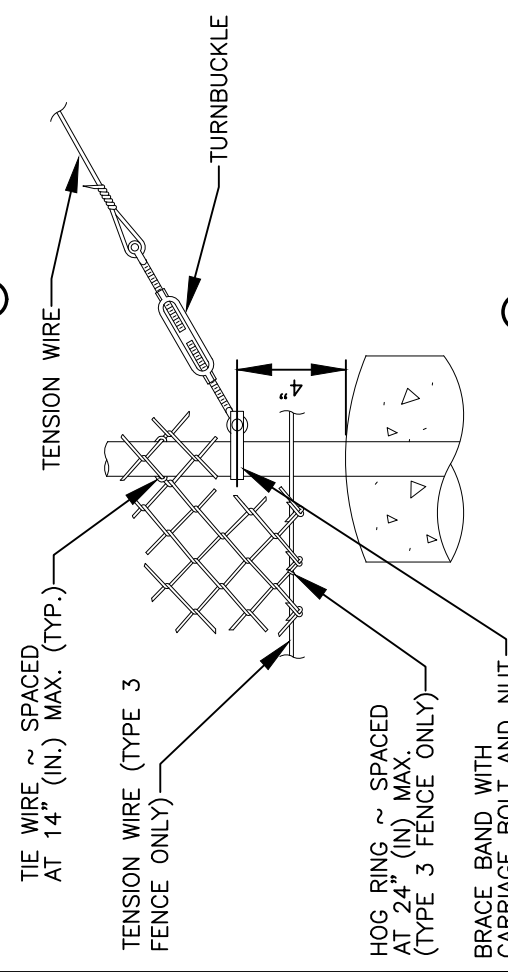
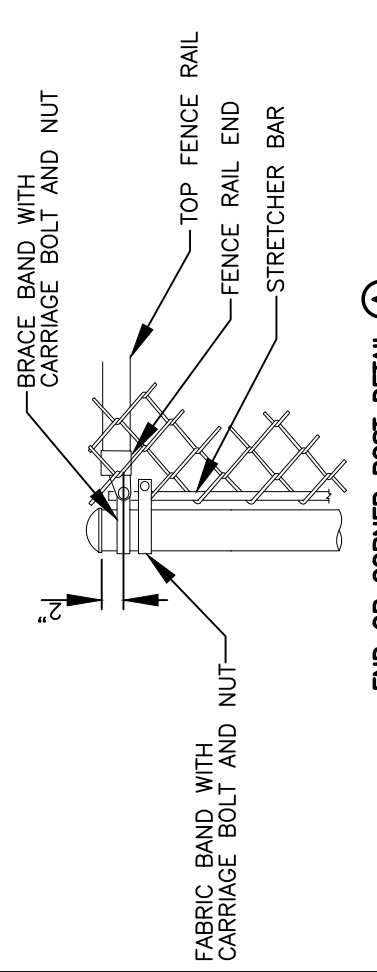
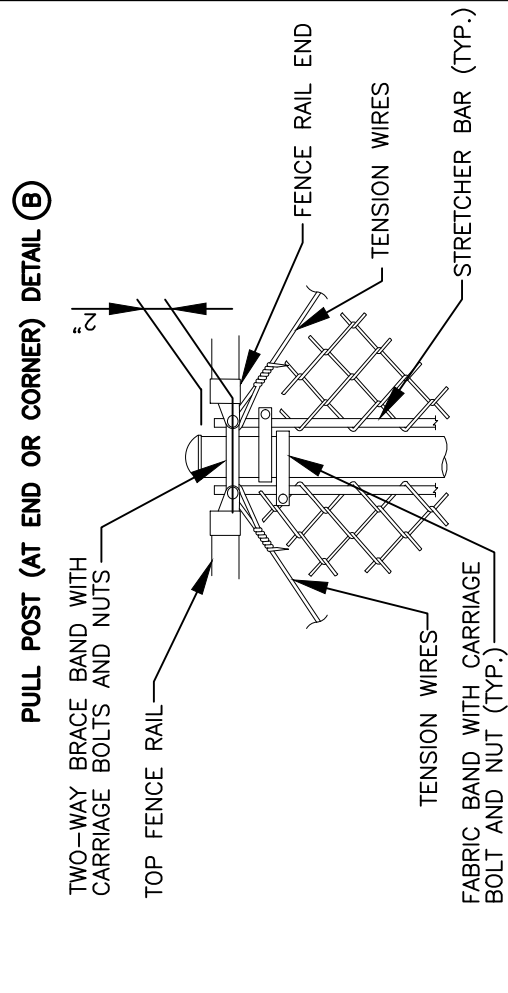
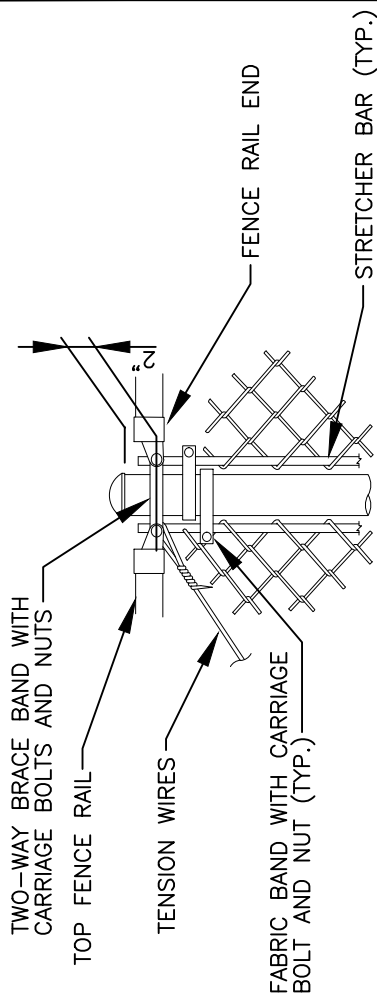


CITY OF VANCOUVER  
DEPARTMENT OF PUBLIC WORKS  
TRANSPORTATION DIVISION

STD. PLAN NO.

**T07-07A**

DRAWN BY	APPROVED BY	APPROVAL DATE
CDC	MHH	3/16
REVISION	APPROVED BY	APPROVAL DATE
3	MHH	3/24



**CHAIN LINK FENCE BLOW-UP DETAILS TYPES 3 AND 4**

DRAWN BY	APPROVED BY	APPROVAL DATE	STD. PLAN NO.
CDC	MARL	3/16	T07-07B
REVISION	APPROVED BY	APPROVAL DATE	
3	MARL	3/24	

CITY OF VANCOUVER  
DEPARTMENT OF PUBLIC WORKS  
TRANSPORTATION DIVISION

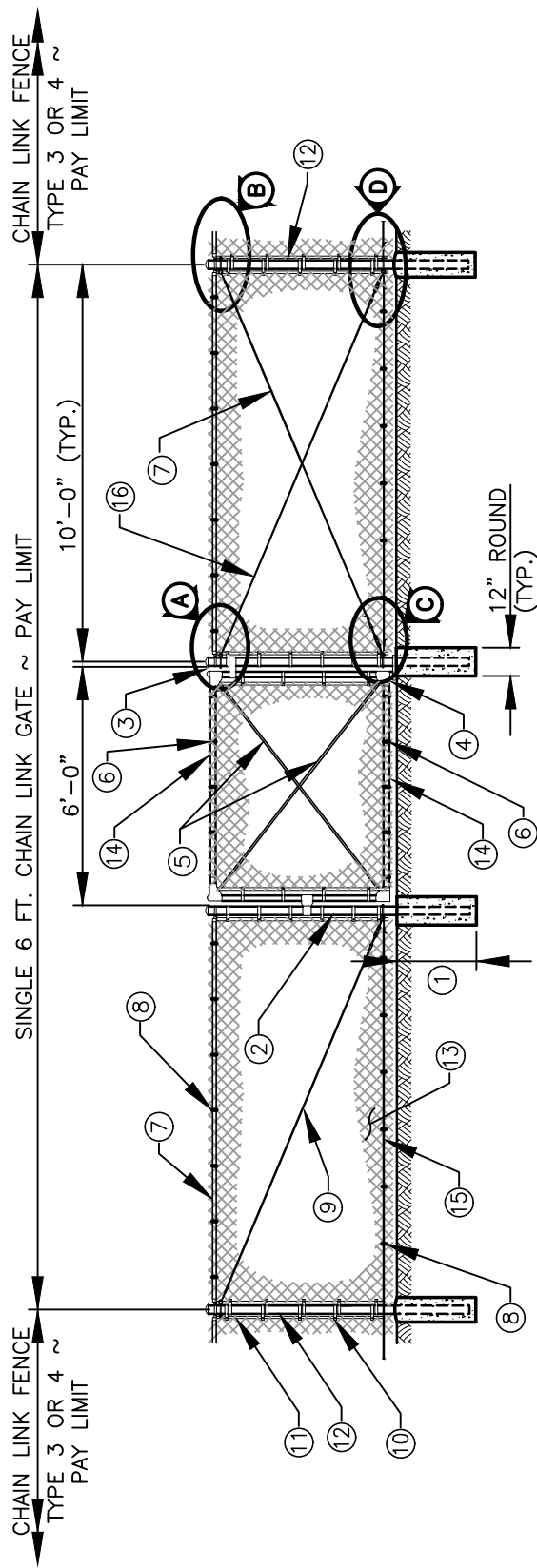


METHOD OF FASTENING STRETCHER BAR TO POST DETAIL (E)

PULL POST (AT END OR CORNER) DETAIL (B)

PULL POST (WITHIN RUN) DETAIL (D)

BRACE POST DETAIL (C)



- ① CONCRETE POST BASE DEPTH (TYP.):  
TYPE 3 FENCE = 3'-0"  
TYPE 4 FENCE = 2'-0"
- ② GATE POST (TYP.) ~ 3 1/2" (IN.) DIAM.  
(NOM. SCH. 40)
- ③ TOP HINGE ~ 90° SWING (TYP.)
- ④ BOTTOM HINGE ~ 90° SWING (TYP.)
- ⑤ TRUSS ROD (TYP.)
- ⑥ TIE WIRES (TYP.) ~ SPACED AT 14" (IN.) MAX.
- ⑦ TOP RAIL (TYP.)
- ⑧ HOG RINGS ~ SPACED AT 24" (IN.) MAX. (TYP.)
- ⑨ TENSION WIRES (TYP.)
- ⑩ FABRIC BAND (TYP.)
- ⑪ STRETCHER BAR (TYP.)
- ⑫ PULL POST

- ⑬ CHAIN LINK FENCE FABRIC (TYP.)
- ⑭ MATCH FENCE SELVAGE (TYP.)
- ⑮ TENSION WIRE ALONG BOTTOM OF FENCE  
(TYPE 3 FENCE ONLY) (TYP.)
- ⑯ TENSION WIRE FOR GATE POST ~  
REQUIRED ONLY ON HINGE SIDE

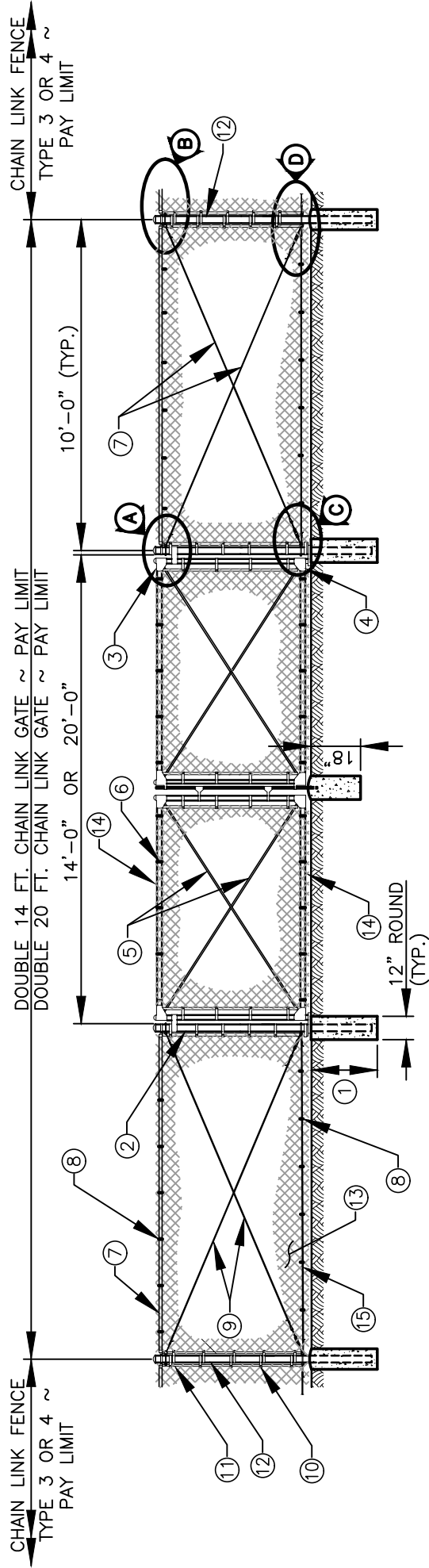
**NOTES:**

- 1. MATERIALS SHALL MEET THE REQUIREMENTS OF THE STANDARD SPECIFICATIONS 9-16.
- 2. ALL FENCE MATERIAL SHALL BE BLACK VINYL COATED.



**CHAIN LINK SINGLE GATE TYPES 3 AND 4**

CITY OF VANCOUVER DEPARTMENT OF PUBLIC WORKS TRANSPORTATION DIVISION	DRAWN BY CDC	APPROVED BY <i>M.H.H.</i>	APPROVAL DATE 3/16	STD. PLAN NO. <b>T07-08A</b>
	REVISION 3	APPROVED BY <i>M.H.H.</i>	APPROVAL DATE 3/24	



- ① CONCRETE POST BASE DEPTH (TYP.):  
TYPE 3 FENCE = 3'-0"  
TYPE 4 FENCE = 2'-0"
- ② GATE POST (TYP.) ~ 3 1/2" (IN.) DIAM.  
(NOM. SCH. 40)
- ③ TOP HINGE ~ 180° SWING (TYP.)
- ④ BOTTOM HINGE ~ 180° SWING (TYP.)
- ⑤ TRUSS ROD (TYP.)
- ⑥ TIE WIRES (TYP.) ~ SPACED AT 14" (IN.) MAX.
- ⑦ TOP RAIL (TYP.)
- ⑧ HOG RINGS ~ SPACED AT 24" (IN.) MAX. (TYP.)
- ⑨ TENSION WIRES (TYP.)
- ⑩ FABRIC BAND (TYP.)
- ⑪ STRETCHER BAR (TYP.)
- ⑫ PULL POST

⑬ CHAIN LINK FENCE FABRIC (TYP.)

⑭ MATCH FENCE SELVAGE (TYP.)

⑮ TENSION WIRE ALONG BOTTOM OF FENCE  
(TYPE 3 FENCE ONLY) (TYP.)

**NOTES:**

1. MATERIALS SHALL MEET THE REQUIREMENTS OF THE STANDARD SPECIFICATIONS 9-16.
2. ALL FENCE MATERIAL SHALL BE BLACK VINYL COATED.
3. SEE CHAIN LINK GATE BLOW-UP DETAILS ON SHEET T07-08C.



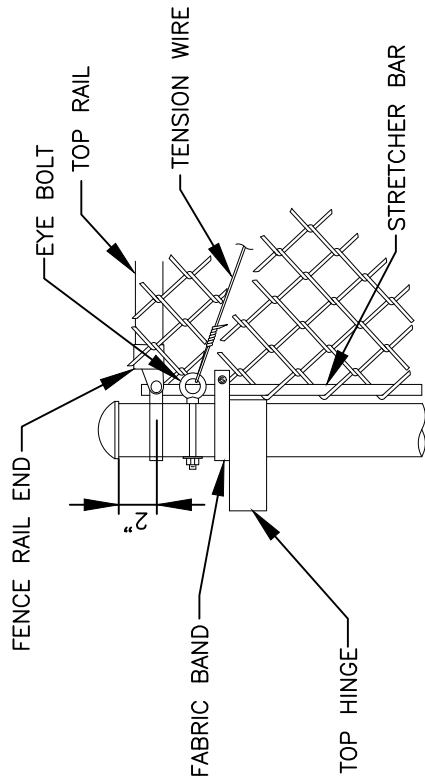
**CHAIN LINK DOUBLE GATE TYPES 3 AND 4**

CITY OF VANCOUVER  
DEPARTMENT OF PUBLIC WORKS  
TRANSPORTATION DIVISION

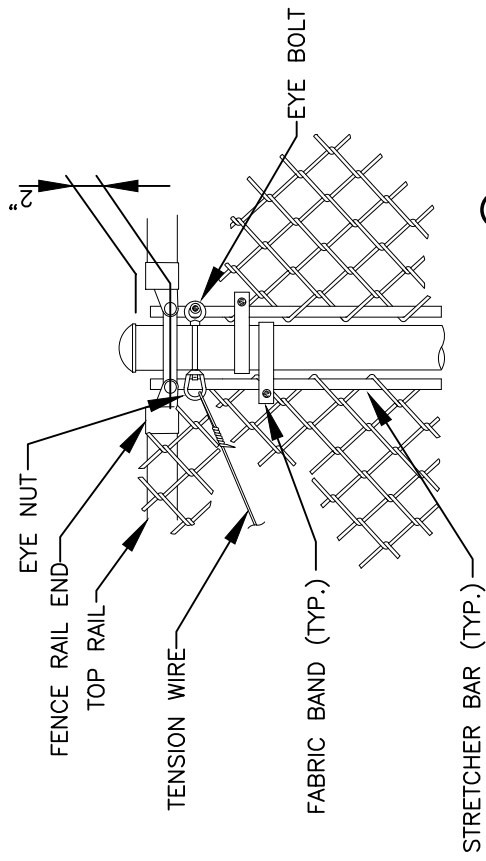
STD. PLAN NO.

**T07-08B**

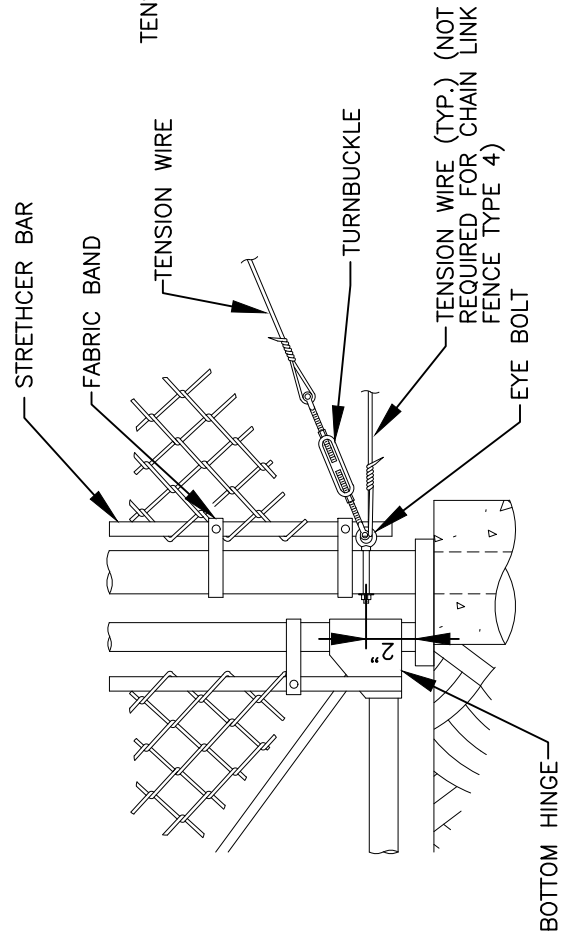
DRAWN BY	APPROVED BY	APPROVAL DATE
CDC	MARL	3/16
REVISION	APPROVED BY	APPROVAL DATE
3	MARL	3/24



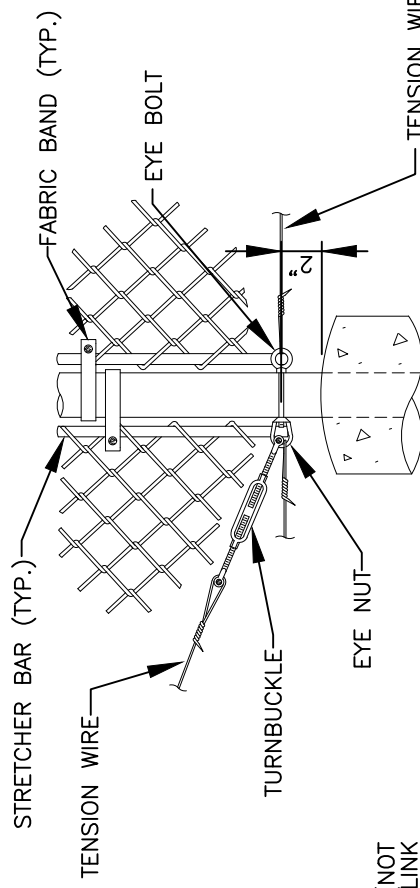
**GATE POST DETAIL A**



**PULL POST DETAIL B**




**GATE POST DETAIL C**



**PULL POST DETAIL D**

TENSION WIRE (TYP.) (NOT REQUIRED FOR CHAIN LINK FENCE TYPE 4)

TENSION WIRE (TYP.) (NOT REQUIRED FOR CHAIN LINK FENCE TYPE 4)



CITY OF  
**Vancouver**  
WASHINGTON

**CHAIN LINK GATE BLOW-UP DETAILS TYPES 3 AND 4**

CITY OF VANCOUVER  
DEPARTMENT OF PUBLIC WORKS  
TRANSPORTATION DIVISION

DRAWN BY	APPROVED BY	APPROVAL DATE	STD. PLAN NO.
CDC	<i>M.H.H.</i>	3/16	<b>T07-08C</b>
REVISION	APPROVED BY	APPROVAL DATE	
3	<i>M.H.H.</i>	3/24	