

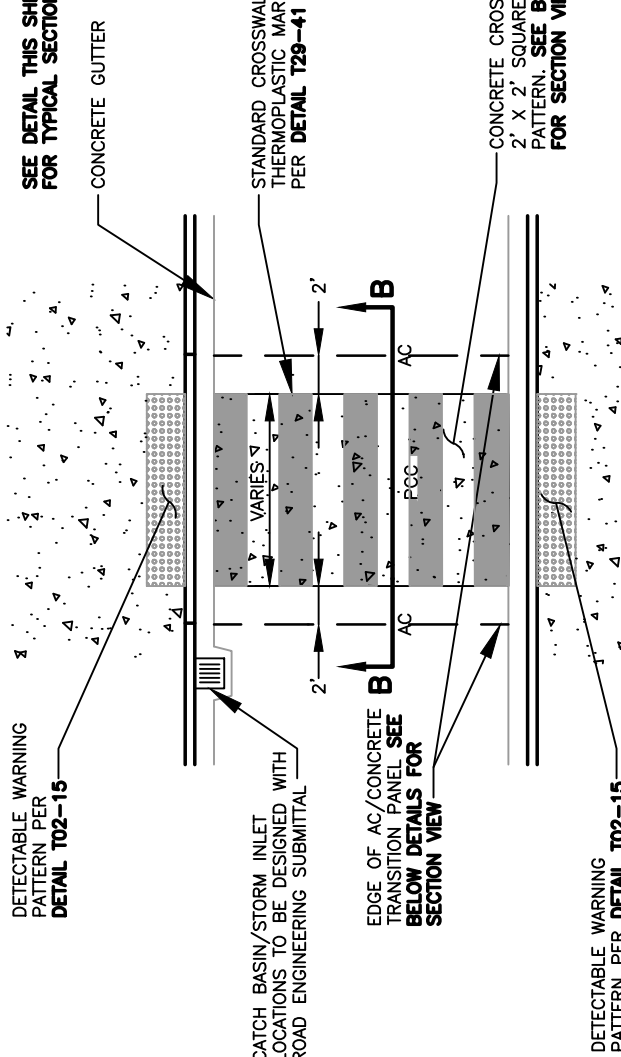


CITY OF VANCOUVER
DEPARTMENT OF PUBLIC WORKS
TRANSPORTATION DIVISION

DRAWN BY	APPROVED BY	APPROVAL DATE
CDC	<i>M.H.H.</i>	9/21
REVISION	APPROVED BY	APPROVAL DATE
2	<i>M.H.H.</i>	3/24

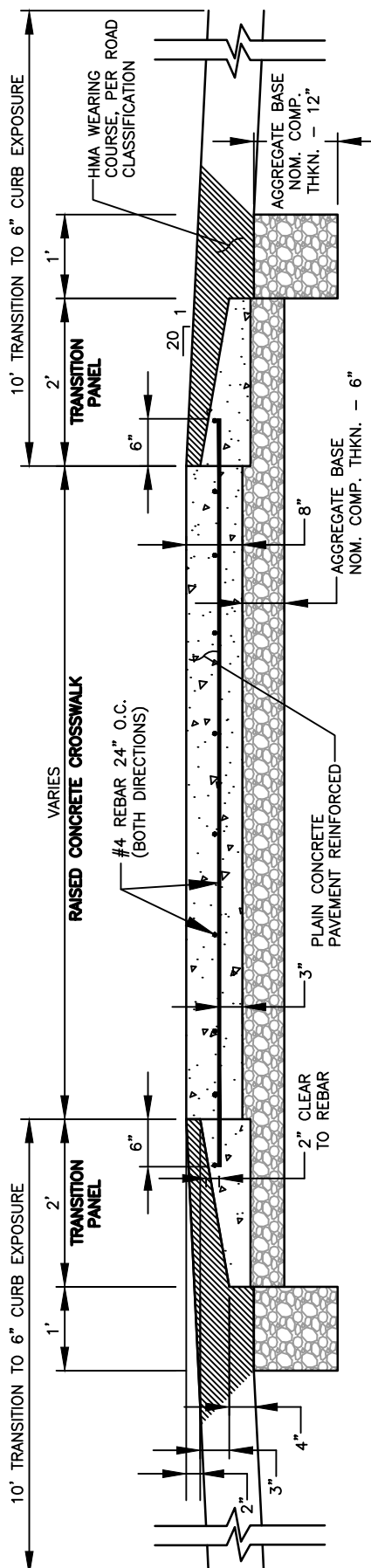
STD. PLAN NO.
T08-17

NOTE:
SEE DETAIL THIS SHEET
FOR TYPICAL SECTION B-B



NOTE:
SPECIFIC DESIGN COORDINATION WITH CITY STORM WATER MANAGEMENT IS REQUIRED AND MAY RESULT IN ADDITIONAL STORMWATER FACILITIES OR CUSTOM DETAIL DESIGN.

TYPICAL RAISED PCC CROSSWALK DETAIL



RAISED PCC CROSSWALK DETAIL SECTION B-B