

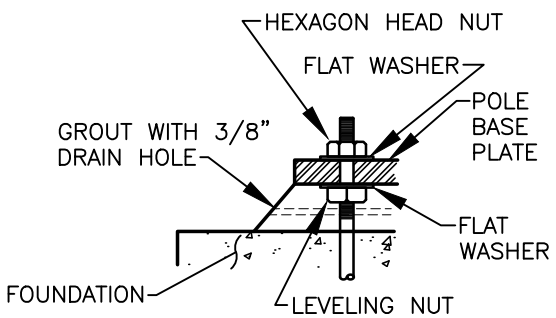
HORIZONTAL TIE BAR SHALL HAVE 15" MIN. LAP



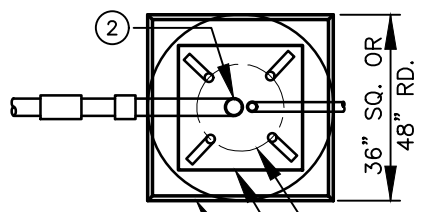
HORIZONTAL REBAR		
POLE FOUNDATION DIAMETER	REBAR CIR. "D"	SPACING
36"	30"	12" MAX. EXCEPT FOR 12'-0" AND 15'-0" BASE WHICH SHALL BE 9" MAX.
48"	40"	12" MAX. EXCEPT FOR 12'-0" AND 15'-0" BASE WHICH SHALL BE 9" MAX.

REBAR CAGE DETAIL

VERTICAL REBAR	
POLE FOUNDATION DEPTH	LENGTH "A"
8'-0"	7'-8"
10'-0"	9'-8"
12'-0"	11'-8"
15'-0"	14'-8"



ANCHOR BOLT DETAIL

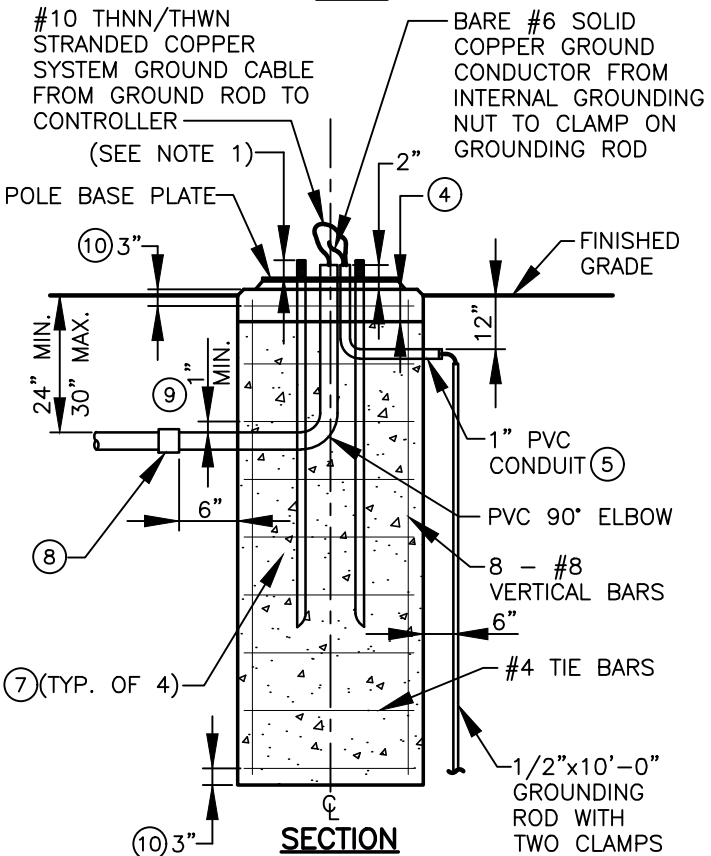


CHAMFER ALL EXPOSED EDGES UNLESS WHERE BASE ABUTS A SIDEWALK

BOLT CIRCLE (SEE NOTE 1)

POLE BASE PLATE

PLAN



SECTION

TRAFFIC SIGNAL POLE BASE

POLE BASE NOTES:

- ① FINAL POLE ANCHOR, BOLT SIZE, ANCHOR BOLT FOUNDATION, AND BOLT CIRCLE SHALL BE AS PER MANUFACTURER'S RECOMMENDED PRACTICES.
- ② ALL CONDUITS AND ANCHOR BOLTS SHALL BE RIGIDLY INSTALLED BEFORE CONCRETE IS PLACED. ANCHORS SHALL BE SPACED BY MEANS OF A FACTORY CERTIFIED TEMPLATE OR DRAWING. THE CENTER OF WHICH SHALL COINCIDE WITH THE CENTER OF THE BASE.
- ③ ALL CONCRETE POLE BASES SHALL BE CONSOLIDATED BY AN INTERNAL TYPE VIBRATOR.
- ④ FINAL 6" OF CONCRETE FOUNDATION (POLE CAP) SHALL BE FORMED SQUARE. FINAL TOP ELEVATION SHALL MATCH SIDEWALK.
- ⑤ PVC CONDUIT ELBOWS IN CONCRETE FOUNDATIONS SHALL BE CONNECTED TO PVC CONDUIT WITH PVC PIPE NIPPLE ALL PVC CONDUIT AND ELBOWS PRIOR TO PVC PIPE NIPPLE SHALL BE CONSIDERED SUBSIDIARY TO THE TRAFFIC SIGNAL POLE BASE.
- ⑥ POLE BASE PLATE THICKNESS VARIES PER SIGNAL POLE SIZE.
- ⑦ ANCHOR BOLTS AND PLATE PER POLE MANUFACTURER. ANCHOR BOLT SHALL BE ACCURATELY LOCATED AND SECURED IN PLACE PRIOR TO POURING CONCRETE.
- ⑧ PVC COUPLING SHALL BE 4" MINIMUM OF THE 6" OUTSIDE FOUNDATION.
- ⑨ CONDUIT SHALL HAVE MINIMUM 1" CLEARANCE FROM REBAR AND ANCHOR BOLTS.
- ⑩ REBAR SHALL HAVE MINIMUM 3" COVER.
- ⑪ SEE WSDOT STANDARD PLAN J-26.10-XX FOR ADDITIONAL INFORMATION.

I:\CITYAPPS\AUTOCAD\STD_DETAILS\DRAWING_FILES\T20-15.DWG



TYPE II, III, B, AND S
TRAFFIC SIGNAL POLE FOUNDATIONS

CITY OF VANCOUVER
 DEPARTMENT OF PUBLIC WORKS
 TRANSPORTATION DIVISION

DRAWN BY	APPROVED BY	APPROVAL DATE
CDC		8/08
REVISION	APPROVED BY	APPROVAL DATE
6		3/24

STD. PLAN NO.
T20-15