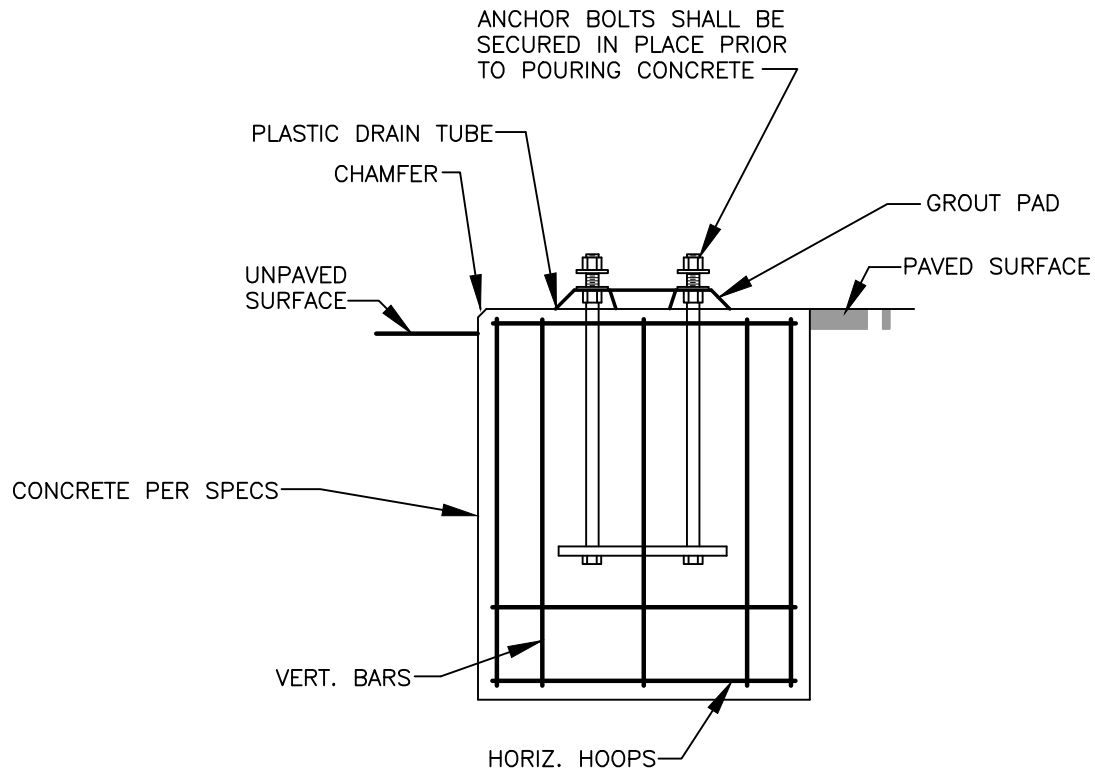


I:\CITYAPPS\AUTOCAD\STD_DETAILS\DRAWING_FILES\T20-16.DWG



FOR TYPE PS AND TYPE I
 REFER TO WSDOT STANDARD PLANS J-20.11 (SHEET 2), J-20.16 AND J-21.10 (SHEET 1).

FOR TYPE PPB:
 REFER TO COV STANDARD PLAN T20-05 AND WSDOT STANDARD PLANS J-20.10 AND J-20.11 (SHEET 1).



CITY OF VANCOUVER
 DEPARTMENT OF PUBLIC WORKS
 TRANSPORTATION DIVISION

DRAWN BY	APPROVED BY	APPROVAL DATE
CDC		8/08
REVISION	APPROVED BY	APPROVAL DATE
7		3/24

STD. PLAN NO.
T20-16

**TYPE PPB, PS, AND I
 TRAFFIC SIGNAL POLE FOUNDATIONS**