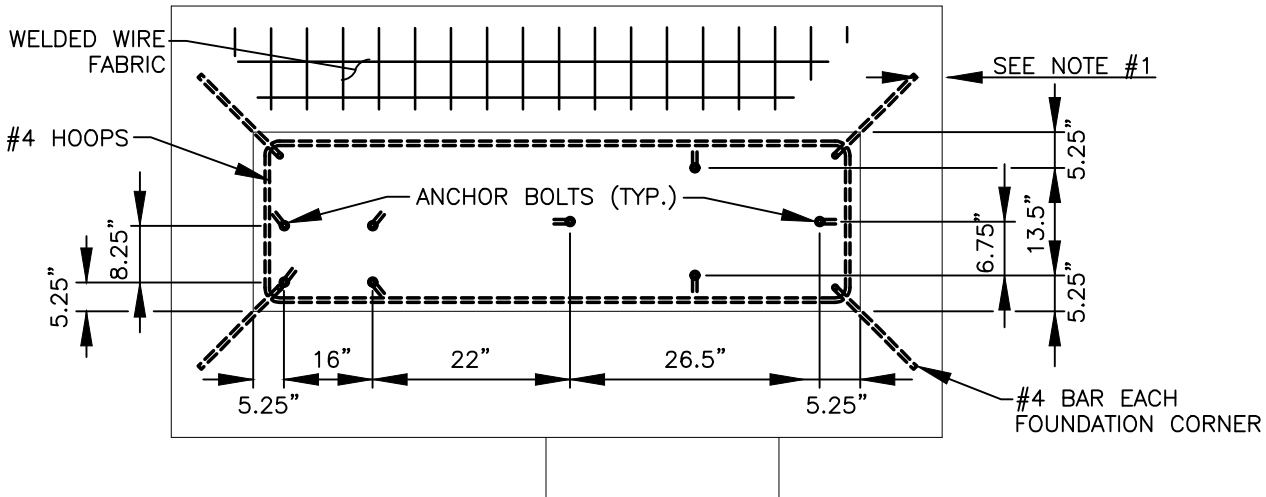
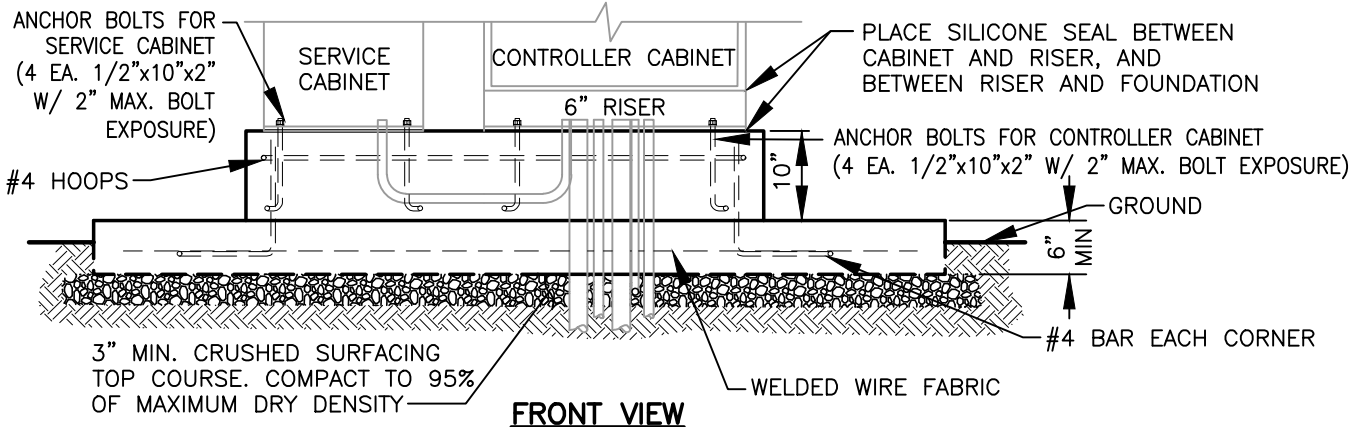


**TOP VIEW**



**TOP VIEW - BOLT PATTERN AND STRUCTURAL SUPPORT**



**FRONT VIEW**

**NOTES:**

1. 2" MINIMUM OF CONCRETE COVER ON ALL STRUCTURAL SUPPORT BARS.
2. CONDUITS SHALL EXTEND 2" MIN. AND 3" MAX. ABOVE CONCRETE MEASURED TO END OF BELL OR GROUND BUSHING.
3. ENSURE ALL DOORS CAN SWING OPEN 180 DEGREES.
4. SEE WSDOT STD. PLAN J-10.10 FOR SPECIFICATIONS.

I:\CITYAPPS\AUTOCAD\STD\_DETAILS\DRAWING\_FILES\T20-38EB.DWG



**TYPE "MSX" OR "M" HAWK CABINET SERVICE COMBINATION FOUNDATION**

CITY OF VANCOUVER  
DEPARTMENT OF PUBLIC WORKS  
TRANSPORTATION DIVISION

DRAWN BY	APPROVED BY	APPROVAL DATE
CDC		3/17
REVISION	APPROVED BY	APPROVAL DATE
3		3/24

STD. PLAN NO.  
**T20-38EB**