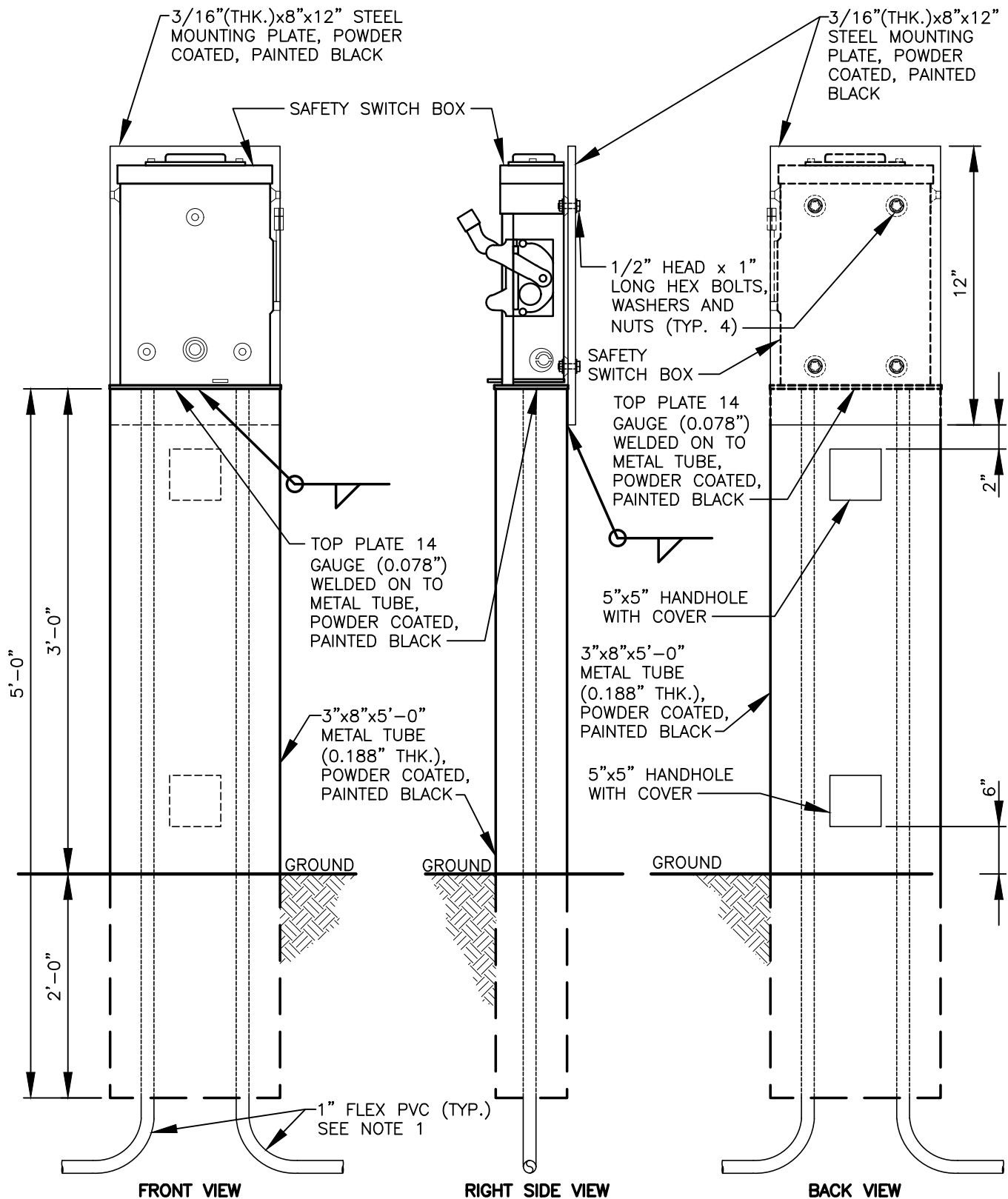


I:\CITYAPPS\AUTOCAD\STD_DETAILS\DRAWING_FILES\T21-18C.DWG



NOTES:

1. 1" FLEX PVC LIQUID TIGHT CONDUIT. TERMINATE FLEX PVC CONDUIT AT THE BASE OF THE DISCONNECT SWITCH. FLEX CONDUIT SHALL BE TERMINATED WITH 1" NYLON LIQUID TIGHT STRAIGHT CONNECTORS.
2. SAFETY SWITCH BOX SHALL BE SCHNEIDER ELECTRIC PART #D221NRB OR APPROVED EQUAL.



STREET LIGHT DISCONNECT DETAIL

CITY OF VANCOUVER
DEPARTMENT OF PUBLIC WORKS
TRANSPORTATION DIVISION

DRAWN BY	APPROVED BY	APPROVAL DATE
CDC		2/21
REVISION	APPROVED BY	APPROVAL DATE
4		3/24

STD. PLAN NO.

T21-18C