

BUFFER DATA

LONGITUDINAL BUFFER SPACE = B		25	30	35	40	45
SPEED (MPH)		25	30	35	40	45
LENGTH (FEET)		155	200	250	305	360
BUFFER VEHICLE ROLL AHEAD DISTANCE = R						

TRANSPORTABLE ATTENUATOR
 MINIMUM HOST VEHICLE WEIGHT
 15,000 LBS. THE MAXIMUM WEIGHT
 SHALL BE IN ACCORDANCE WITH THE
 MANUFACTURERS RECOMMENDATION.

PROTECTIVE VEHICLE
 MAY BE A WORK VEHICLE
 STRATEGICALLY LOCATED TO
 SHIELD THE WORK AREA.

CHANNELIZATION DEVICE SPACING (FEET)

MPH	TAPER	TANGENT
35/45	30	60
25/30	20	40

SIGN SPACING = X (1)

PRINCIPAL ARTERIALS	45 MPH	500'±
PRINCIPAL, MINOR OR COLLECTOR ARTERIALS	35/40 MPH	350'±
PRINCIPAL, MINOR, COLLECTOR ARTERIALS, INDUSTRIAL AND LOCAL ACCESS ROADWAYS	25/30 MPH	200'± (2)
INDUSTRIAL AND LOCAL ACCESS ROADWAYS	25 MPH OR LESS	100'± (2)

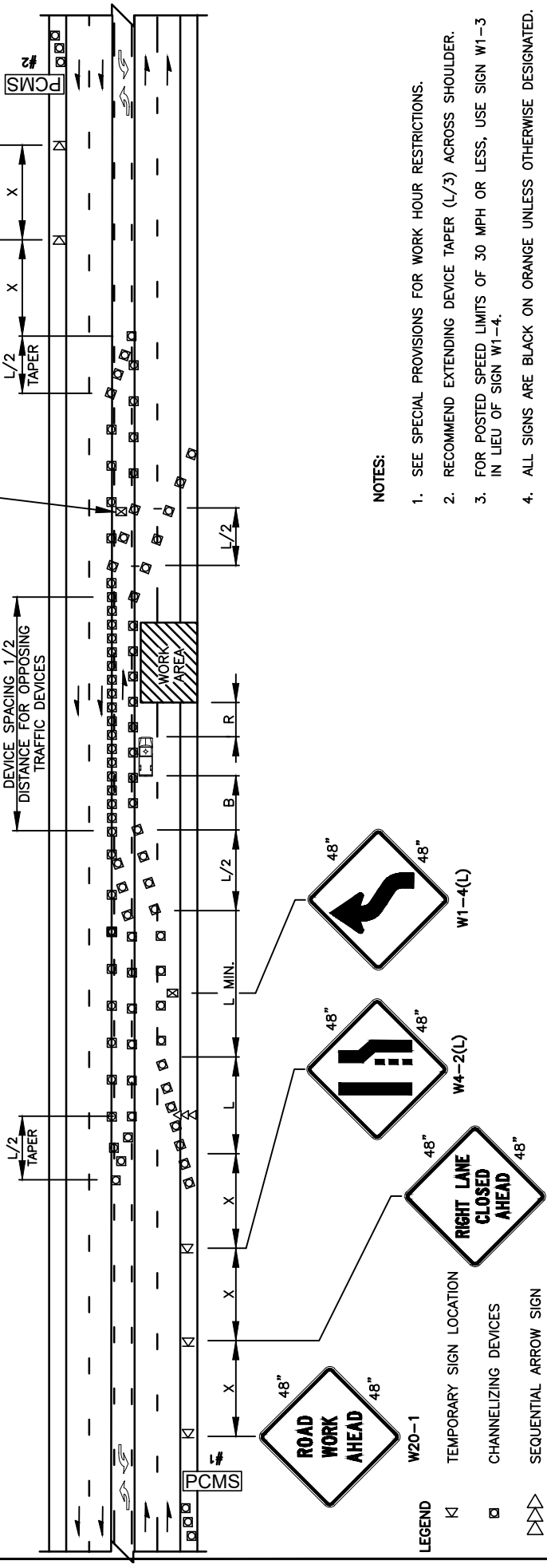
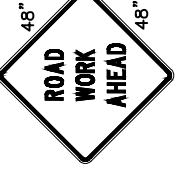
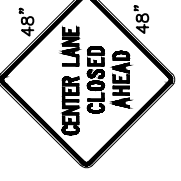
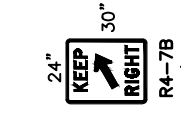
(1) ALL SPACING MAY BE ADJUSTED TO ACCOMMODATE INTERSECTIONS AND DRIVEWAYS.
 (2) THIS SPACING MAY BE REDUCED IN URBAN AREAS TO FIT ROADWAY CONDITIONS.

PCMS #1		FIELD LOCATE IN ADVANCE OF TEMPORARY SIGNS.	
1	RIGHT LANE CLOSURE	2	1 MILE AHEAD
2.0 SEC		2.0 SEC	

PCMS #2		FIELD LOCATE IN ADVANCE OF TEMPORARY SIGNS.	
1	CENTER LANE CLOSED	2	NO LEFT TURNING
2.0 SEC		2.0 SEC	

MINIMUM LANE CLOSURE TAPER LENGTH = L (FEET)

LANE WIDTH (FEET)	POSTED SPEED (MPH)			
	25	30	35	40
10	105	150	205	270
11	115	165	225	295
12	125	180	245	320
			245	540



NOTES:

1. SEE SPECIAL PROVISIONS FOR WORK HOUR RESTRICTIONS.
2. RECOMMEND EXTENDING DEVICE TAPER (L/3) ACROSS SHOULDER.
3. FOR POSTED SPEED LIMITS OF 30 MPH OR LESS, USE SIGN W1-3 IN LIEU OF SIGN W1-4.
4. ALL SIGNS ARE BLACK ON ORANGE UNLESS OTHERWISE DESIGNATED.

LEGEND

- K TEMPORARY SIGN LOCATION
- CHANNELIZING DEVICES
- ▷▷ SEQUENTIAL ARROW SIGN
- ▬ PROTECTIVE VEHICLE
- PCMS PORTABLE CHANGEABLE MESSAGE SIGN
- ⊠ TEMP. SIGN LOCATION (5' MOUNTING HEIGHT)

TRAFFIC CONTROL STANDARD PLAN
RIGHT LANE CLOSURE WITH SHIFT - 5 LANE ROADWAYS

CITY OF VANCOUVER
 DEPARTMENT OF PUBLIC WORKS
 TRANSPORTATION DIVISION

DRAWN BY	APPROVED BY	APPROVAL DATE
CDC	[Signature]	3/16
REVISION	APPROVED BY	APPROVAL DATE
3	[Signature]	3/24

STD. PLAN NO. **TC10**