

BUFFER DATA

LONGITUDINAL BUFFER SPACE = B		25	30	35	40	45
SPEED (MPH)		155	200	250	305	360
LENGTH (FEET)		BUFFER VEHICLE ROLL AHEAD DISTANCE = R				

TRANSPORTABLE ATTENUATOR
 MINIMUM HOST VEHICLE WEIGHT
 15,000 LBS. THE MAXIMUM WEIGHT
 SHALL BE IN ACCORDANCE WITH THE
 MANUFACTURERS RECOMMENDATION.

PROTECTIVE VEHICLE
 MAY BE A WORK VEHICLE
 STRATEGICALLY LOCATED TO
 SHIELD THE WORK AREA.

**CHANNELIZATION DEVICE
 SPACING (FEET)**

MPH	TAPER	TANGENT
35/45	30	60
25/30	20	40

SIGN SPACING = X (1)

PRINCIPAL ARTERIALS	45 MPH	500' ±
PRINCIPAL, MINOR OR COLLECTOR ARTERIALS	35/40 MPH	350' ±
PRINCIPAL, MINOR, COLLECTOR ARTERIALS, INDUSTRIAL AND LOCAL ACCESS ROADWAYS	25/30 MPH	200' ± (2)
INDUSTRIAL AND LOCAL ACCESS ROADWAYS	25 MPH OR LESS	100' ± (2)

(1) ALL SPACING MAY BE ADJUSTED TO ACCOMMODATE INTERSECTIONS AND DRIVEWAYS.
 (2) THIS SPACING MAY BE REDUCED IN URBAN AREAS TO FIT ROADWAY CONDITIONS.

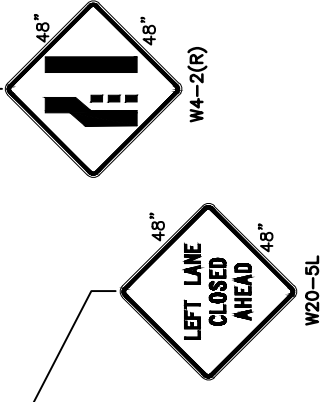
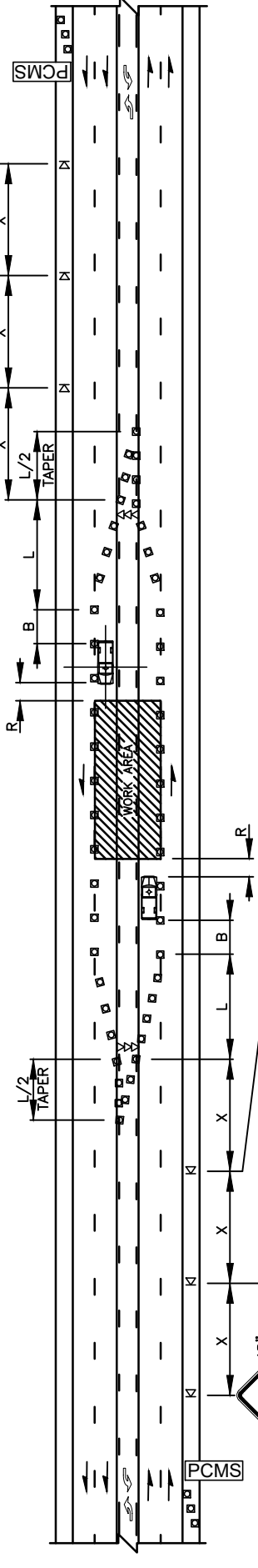
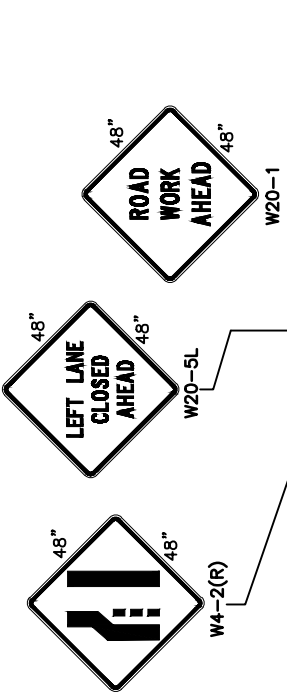
PCMS

1	2
CENTER LANE CLOSURE	NO LEFT TURNING
2.0 SEC	2.0 SEC

FIELD LOCATE IN ADVANCE OF TEMPORARY SIGNS.

MINIMUM LANE CLOSURE TAPER LENGTH = L (FEET)

LANE WIDTH (FEET)	POSTED SPEED (MPH)				
	25	30	35	40	45
10	105	150	205	270	450
11	115	165	225	295	495
12	125	180	245	320	540



NOTES:

- SEE SPECIAL PROVISIONS FOR WORK HOUR RESTRICTIONS.
- ALL SIGNS ARE BLACK ON ORANGE.

TRAFFIC CONTROL STANDARD PLAN
LEFT LANE AND CENTER TURN LANE - 5 LANE ROADWAYS

CITY OF VANCOUVER
 DEPARTMENT OF PUBLIC WORKS
 TRANSPORTATION DIVISION

STD. PLAN NO.
TC11

DRAWN BY	APPROVED BY	APPROVAL DATE
CDC		3/16
REVISION	APPROVED BY	APPROVAL DATE
3		3/24

CITY OF Vancouver WASHINGTON

PORTABLE CHANGEABLE MESSAGE SIGN