

BUFFER DATA

LONGITUDINAL BUFFER SPACE = B		25	30	35	40	45
SPEED (MPH)		25	30	35	40	45
LENGTH (FEET)		155	200	250	305	360
BUFFER VEHICLE ROLL AHEAD DISTANCE = R						

TRANSPORTABLE ATTENUATOR
 MINIMUM HOST VEHICLE WEIGHT 30 FEET
 15,000 LBS. THE MAXIMUM WEIGHT MIN. TO
 SHALL BE IN ACCORDANCE WITH THE 100 FEET
 MANUFACTURERS RECOMMENDATION. MAX.

PROTECTIVE VEHICLE
 MAY BE A WORK VEHICLE NO SPECIFIED
 STRATEGICALLY LOCATED TO DISTANCE
 SHIELD THE WORK AREA. REQUIRED

CHANNELIZATION DEVICE SPACING (FEET)

MPH	TAPER	TANGENT
35/45	30	60
25/30	20	40

SIGN SPACING = X (1)

PRINCIPAL ARTERIALS	45 MPH	500' ±
PRINCIPAL, MINOR OR COLLECTOR ARTERIALS	35/40 MPH	350' ±
PRINCIPAL, MINOR, COLLECTOR ARTERIALS, INDUSTRIAL AND LOCAL ACCESS ROADWAYS	25/30 MPH	200' ± (2)
INDUSTRIAL AND LOCAL ACCESS ROADWAYS	25 MPH OR LESS	100' ± (2)

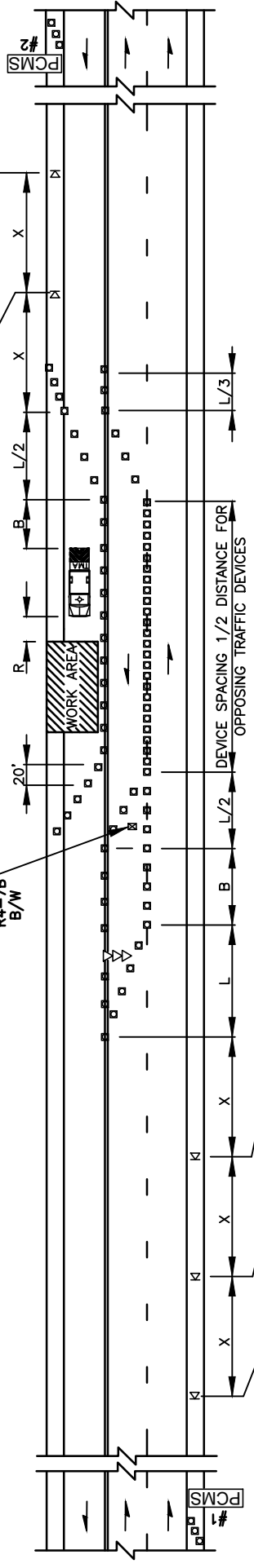
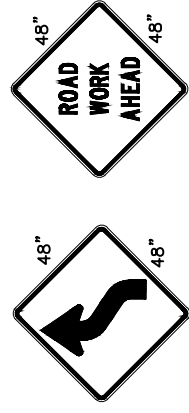
(1) ALL SPACING MAY BE ADJUSTED TO ACCOMMODATE INTERSECTIONS AND DRIVEWAYS.
 (2) THIS SPACING MAY BE REDUCED IN URBAN AREAS TO FIT ROADWAY CONDITIONS.

PCMS #1	PCMS #2
1	1
CENTER LANE CLOSURE	LANE SHIFTS LEFT
2.0 SEC	2.0 SEC
FIELD LOCATE IN ADVANCE OF TEMPORARY SIGNS.	

PCMS #1	PCMS #2
1	2
LANE SHIFTS LEFT	1 MILE AHEAD
2.0 SEC	2.0 SEC
FIELD LOCATE IN ADVANCE OF TEMPORARY SIGNS.	

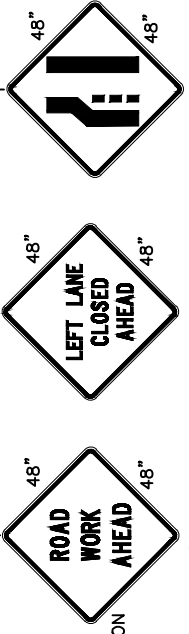
MINIMUM LANE CLOSURE TAPER LENGTH = L (FEET)

LANE WIDTH (FEET)	POSTED SPEED (MPH)			
	25	30	35	40
10	105	150	205	270
11	115	165	225	295
12	125	180	245	320
				540



NOTES

1. SEE SPECIAL PROVISIONS FOR WORK HOUR RESTRICTIONS.
2. FOR SPEED LIMIT OF 30 MPH OR LESS, USE SIGN W1-3 IN LIEU OF SIGN W1-4.
3. RECOMMENDED EXTENDING DEVICE TAPER (L/3) ACROSS SHOULDER.
4. ALL SIGNS ARE BLACK ON ORANGE UNLESS OTHERWISE DESIGNATED.



TRANSPORTABLE ATTENUATOR

PORTABLE CHANGEABLE MESSAGE SIGN

TEMPORARY SIGN LOCATION (5' (FT.) MOUNTING HEIGHT)

TRAFFIC CONTROL STANDARD PLAN LANE SHIFT - 3 LANE ROADWAYS

CITY OF VANCOUVER
 DEPARTMENT OF PUBLIC WORKS
 TRANSPORTATION DIVISION

STD. PLAN NO.
TC12

DRAWN BY	APPROVED BY	APPROVAL DATE
CDC	[Signature]	3/16
REVISION	APPROVED BY	APPROVAL DATE
3	[Signature]	3/24