

SIGN SPACING = X (1)

PRINCIPAL ARTERIALS	45 MPH	500'±
PRINCIPAL, MINOR OR COLLECTOR ARTERIALS	35/40 MPH	350'±
PRINCIPAL, MINOR, COLLECTOR ARTERIALS, INDUSTRIAL AND LOCAL ACCESS ROADWAYS	25/30 MPH	200'± (2)
INDUSTRIAL AND LOCAL ACCESS ROADWAYS	25 MPH OR LESS	100'± (2)

(1) ALL SPACING MAY BE ADJUSTED TO ACCOMMODATE INTERSECTIONS AND DRIVEWAYS.
 (2) THIS SPACING MAY BE REDUCED IN URBAN AREAS TO FIT ROADWAY CONDITIONS.

CHANNELIZATION DEVICE SPACING (FEET)

MPH	TAPER	TANGENT
35/45	30	60
25/30	20	40

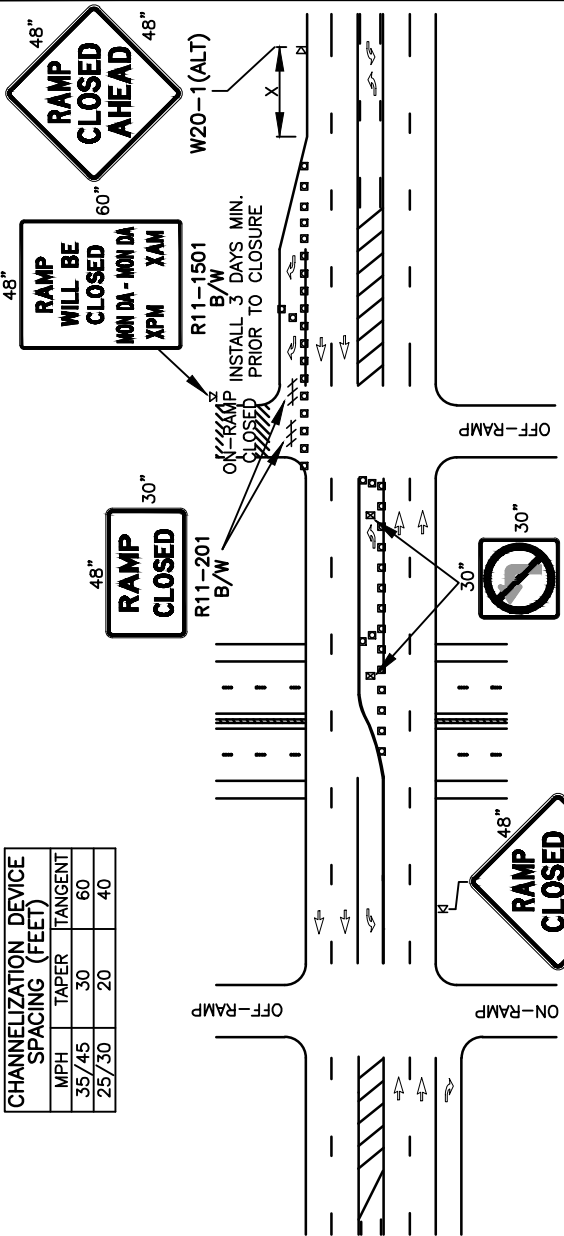
MINIMUM LANE CLOSURE TAPER LENGTH = L (FEET)

LANE WIDTH (FEET)	POSTED SPEED (MPH)			
	25	30	35	40
10	105	150	205	270
11	115	165	225	295
12	125	180	245	320

PCMS

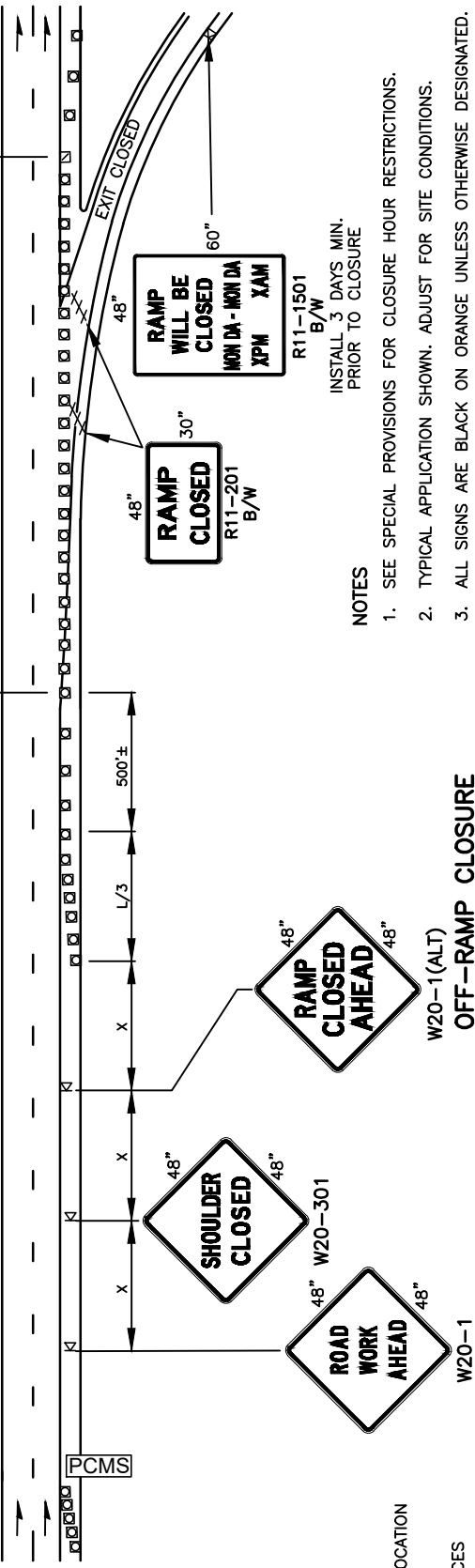
1	2
EXIT	USE
XXX	EXIT
CLOSED	XXX
2.0 SEC	2.0 SEC

FIELD LOCATE IN ADVANCE OF TEMPORARY SIGNS.



TYPICAL ON-RAMP CLOSURE

DEVICE SPACING REDUCED TO 1/2 DISTANCE ACROSS EXIT RAMP DURING CLOSURE



OFF-RAMP CLOSURE

- NOTES**
- SEE SPECIAL PROVISIONS FOR CLOSURE HOUR RESTRICTIONS.
 - TYPICAL APPLICATION SHOWN. ADJUST FOR SITE CONDITIONS.
 - ALL SIGNS ARE BLACK ON ORANGE UNLESS OTHERWISE DESIGNATED.

TRAFFIC CONTROL STANDARD PLAN SHORT TERM RAMP CLOSURES

<p>CITY OF Vancouver WASHINGTON</p>	CITY OF VANCOUVER DEPARTMENT OF PUBLIC WORKS TRANSPORTATION DIVISION		APPROVED BY	APPROVAL DATE	STD. PLAN NO.
	3	3	CDC	3/16	TC13
<p>PCMS PORTABLE CHANGEABLE MESSAGE SIGN</p> <p>TEMP. SIGN LOCATION (5' MOUNTING HEIGHT)</p>		<p>REVISION</p> <p>APPROVED BY</p> <p>APPROVAL DATE</p>		<p>3/24</p>	