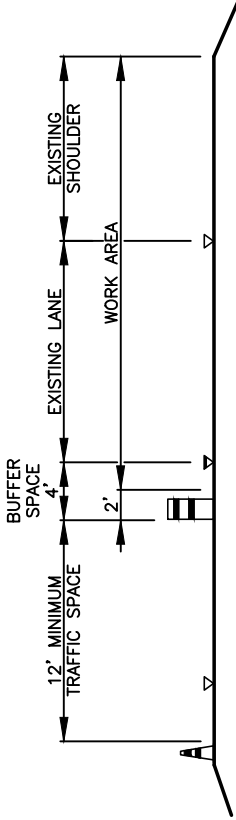


BUFFER DATA					
LONGITUDINAL BUFFER SPACE = B		POSTED SPEED (MPH)			
SPEED (MPH)	25	30	35	40	45
LENGTH (FEET)	155	200	250	305	360
BUFFER VEHICLE ROLL AHEAD DISTANCE = R					
TRANSPORTABLE ATTENUATOR	30 FEET MIN. TO MAX.				
MINIMUM HOST VEHICLE WEIGHT	15,000 LBS. THE MAXIMUM WEIGHT SHALL BE IN ACCORDANCE WITH THE MANUFACTURERS RECOMMENDATION.				

SIGN SPACING = X (1)	
PRINCIPAL ARTERIALS	45 MPH
PRINCIPAL, MINOR OR COLLECTOR ARTERIALS	35/40 MPH
PRINCIPAL, MINOR, COLLECTOR ARTERIALS, INDUSTRIAL AND LOCAL ACCESS ROADWAYS	25/30 MPH
INDUSTRIAL AND LOCAL ACCESS ROADWAYS	25 MPH OR LESS

(1) ALL SPACING MAY BE ADJUSTED TO ACCOMMODATE INTERSECTIONS AND DRIVEWAYS.
 (2) THIS SPACING MAY BE REDUCED IN URBAN AREAS TO FIT ROADWAY CONDITIONS.

CHANNELIZATION DEVICE SPACING (FEET)	
MPH	TANGENT
35/45	30
25/30	20



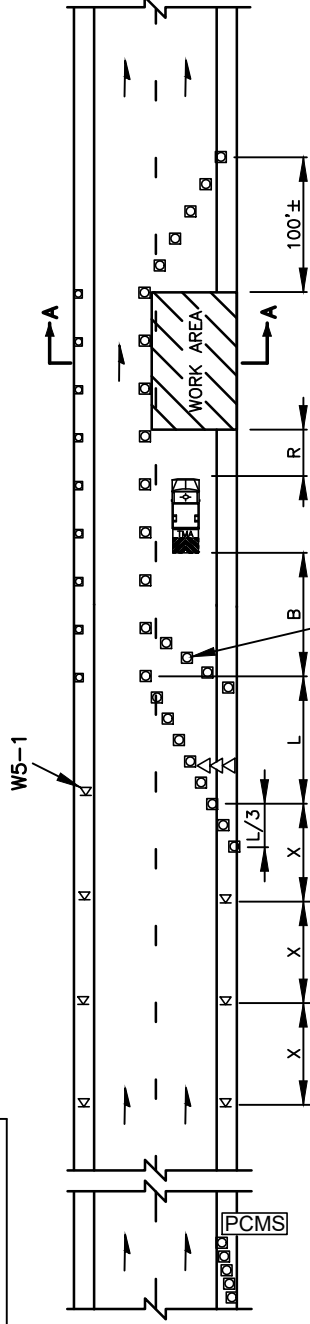
TYPICAL SECTION A-A



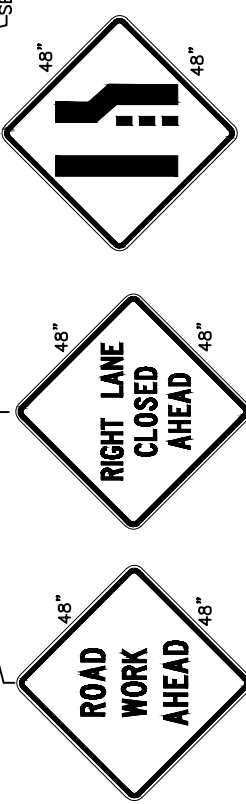
MINIMUM SHOULDER TAPER LENGTH = L/3 (FEET)	
SHOULDER WIDTH (FEET)	POSTED SPEED (MPH)
8	25 30 35 40 45
10	105 150 205 270 450
	115 165 225 295 495
	125 180 245 320 540

USE A MINIMUM 3 DEVICES TAPER FOR SHOULDER LESS THEN 8'.

MINIMUM LANE CLOSURE TAPER LENGTH = L (FEET)	
LANE WIDTH (FEET)	POSTED SPEED (MPH)
10	25 30 35 40 45
11	105 150 205 270 450
12	115 165 225 295 495
	125 180 245 320 540



SEE NOTE 3



- NOTES**
- SEE SPECIAL PROVISIONS FOR WORK HOUR RESTRICTIONS.
 - RECOMMEND EXTENDING DEVICE TAPER (L/3) ACROSS SHOULDER.
 - USE TRANSVERSE DEVICES IN CLOSED LANE EVERY 1000' ± (RECOMMENDED).
 - ALL SIGNS ARE BLACK ON ORANGE.
 - RECOMMEND ADVANCE NOTICE FOR ANY OVER WIDTH LOADS PRIOR TO LANE CLOSURE FOR ALTERNATE ROUTES IF APPLICABLE.

- LEGEND**
- ⊓ TEMPORARY SIGN LOCATION
 - CHANNELIZING DEVICES
 - ⇨ SEQUENTIAL ARROW SIGN
 - ATTN TRANSPORTABLE ATTENUATOR
 - PCMS PORTABLE CHANGEABLE MESSAGE SIGN

**TRAFFIC CONTROL STANDARD PLAN
 SINGLE-LANE CLOSURE WITH SHIFT**

<p>CITY OF Vancouver WASHINGTON</p>	CITY OF VANCOUVER DEPARTMENT OF PUBLIC WORKS TRANSPORTATION DIVISION		DRAWN BY / APPROVED BY / APPROVAL DATE CDC / [Signature] / 3/16	STD. PLAN NO. TC17
	W20-1 W4-2(L) W4-5R	3	APPROVED BY / APPROVAL DATE [Signature] / 3/24	APPROVED BY / APPROVAL DATE [Signature] / 3/24