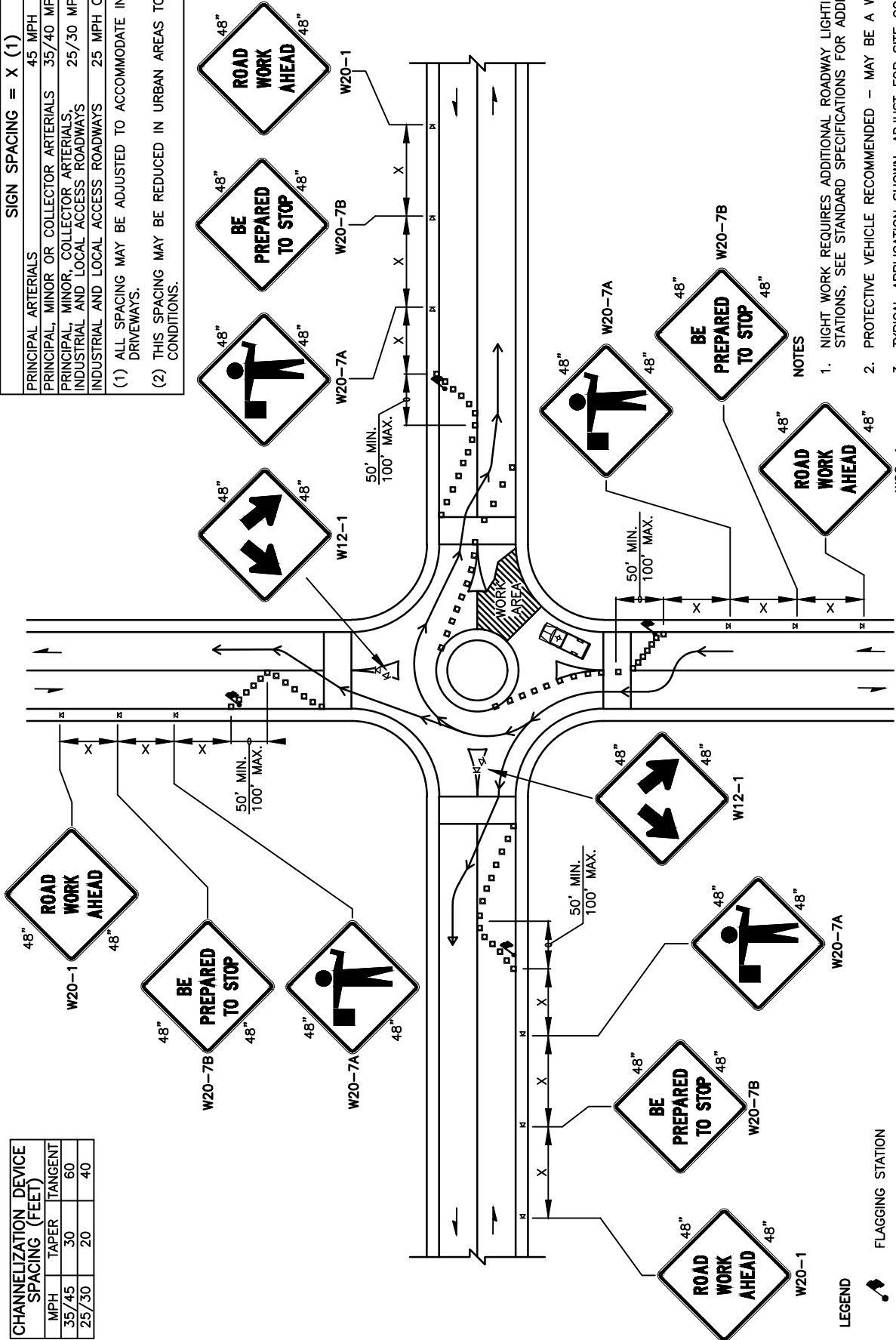


CHANNELIZATION DEVICE SPACING (FEET)	
MPH	TANGENT
35/45	30
25/30	20
	40

SIGN SPACING = X (1)		
PRINCIPAL ARTERIALS	45 MPH	500'±
PRINCIPAL, MINOR OR COLLECTOR ARTERIALS	35/40 MPH	350'±
PRINCIPAL, MINOR, COLLECTOR ARTERIALS, INDUSTRIAL AND LOCAL ACCESS ROADWAYS	25/30 MPH	200'± (2)
INDUSTRIAL AND LOCAL ACCESS ROADWAYS	25 MPH OR LESS	100'± (2)

(1) ALL SPACING MAY BE ADJUSTED TO ACCOMMODATE INTERSECTIONS AND DRIVEWAYS.
 (2) THIS SPACING MAY BE REDUCED IN URBAN AREAS TO FIT ROADWAY CONDITIONS.



- NOTES
1. NIGHT WORK REQUIRES ADDITIONAL ROADWAY LIGHTING AT FLAGGING STATIONS, SEE STANDARD SPECIFICATIONS FOR ADDITIONAL DETAILS.
 2. PROTECTIVE VEHICLE RECOMMENDED - MAY BE A WORK VEHICLE.
 3. TYPICAL APPLICATION SHOWN, ADJUST FOR SITE CONDITIONS.

TRAFFIC CONTROL STANDARD PLAN
TYPICAL ROUNDABOUT FLAGGING OPERATION

CITY OF VANCOUVER
 DEPARTMENT OF PUBLIC WORKS
 TRANSPORTATION DIVISION

DRAWN BY	APPROVED BY	APPROVAL DATE
CDC	[Signature]	3/16
REVISION	APPROVED BY	APPROVAL DATE
3	[Signature]	3/24

STD. PLAN NO. **TC18**



LEGEND

- FLAGGING STATION
- TEMPORARY SIGN LOCATION
- CHANNELIZING DEVICES
- PROTECTIVE VEHICLE - RECOMMENDED